

# RED INDICATES ORIGINAL

DATA CONTAINED IN THIS DOCUMENT IS PROPRIETARY TO TROMPETER ELECTRONICS, INC. AND SHALL NOT BE DISCLOSED, COPIED OR USED FOR REPRODUCTION OR MANUFACTURE WITHOUT EXPRESS WRITTEN PERMISSION.

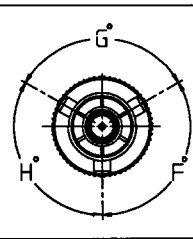
REVISIONS			305-0042	SH 1
REV	ED	DESCRIPTION	OWN	APPROVED
R	12710	ADDED: CABLE STRIPPING STEP 18 TO SH 3; SEE ECO	DKC	<i>nam</i> 7/3/99

DASH NO	CONNECTOR TYPE	MATERIAL	ASSEMBLE PER	FIG	MTG HOLE FIG	
-1	PL75	310-0002/6-29	SH 3	1A	---	
-2	BJ74	3-0055/6-29		4A	11	
-3	BJ79	---		---	---	OBsolete SEE -7
-4	CJ70	3-0043/6-29		2A	---	
-5	PL75	---		---	---	OBsolete SEE -1
-6	BJ74	---		---	---	OBsolete SEE -2
-7	BJ79	3-0018/6-29		3A	10	
-8	CJ70	---		---	---	OBsolete SEE -4
-9	PL375	315-0011-29		18	---	
-10	BJ74	3-0073-29		4B	11	
-11	BJ79	3-0074-29		3B	10	
-12	CJ70	3-0066-29		2B	---	
-13	PL375	---		---	---	OBsolete SEE -9
-14	BJ374	---		---	---	OBsolete SEE -10
-15	BJ379	---		---	---	OBsolete SEE -11
-16	CJ370	---		---	---	OBsolete SEE -12
-17	PL74	310-0025-29		5A	---	
-18	BJ74TL	3-0105-29		8A	11	
-19	BJ79TL	3-0112-29		7A	10	
-20	CJ70TL	3-0217-29		6A	---	
-21	PL74	---		---	---	OBsolete SEE -17
-22	BJ74TL	---		---	---	OBsolete SEE -18
-23	BJ79TL	---		---	---	OBsolete SEE -19
-24	CJ70TL	---		---	---	OBsolete SEE -20
-25	PL75FL	310-0006-29		5B	---	
-26	BJ74FL	3-0089-29		8B	11	
-27	BJ79FL	3-0052-29		7B	10	
-28	CJ70FL	3-0101-29		6B	---	
-29	PL75FL	---		---	---	OBsolete SEE -25
-30	BJ74FL	---		---	---	OBsolete SEE -26
-31	BJ79FL	---		---	---	OBsolete SEE -27
-32	CJ70FL	---		---	---	OBsolete SEE -28
-33	PL73	310-0038-29		9	---	
-34	PL73	---		---	---	OBsolete SEE -33

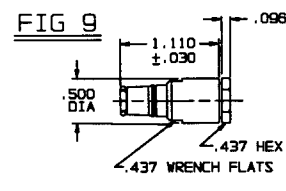
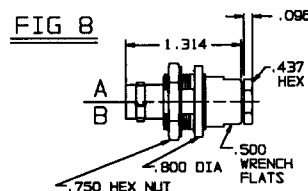
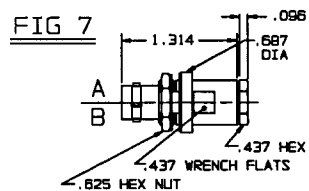
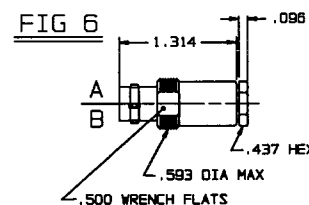
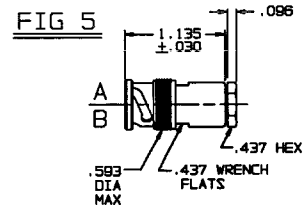
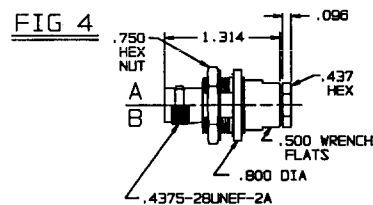
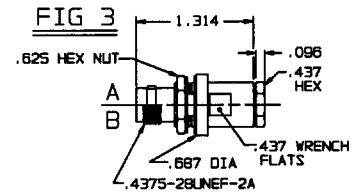
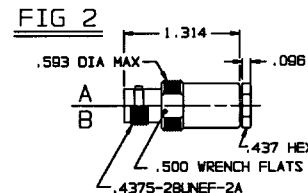
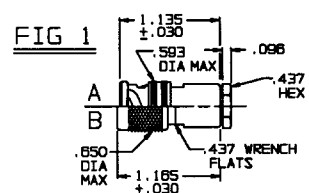
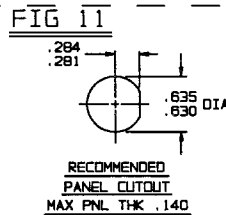
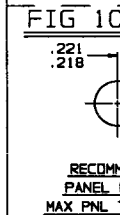
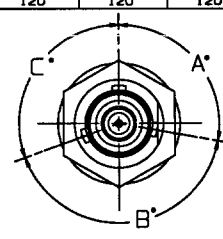
INCH	MM
.005	0.13
.030	0.76
.096	2.44
.109	2.77
.140	3.56
.156	3.96
.172	4.37
.218	5.54
.221	5.61
.281	7.11
.284	7.21
.297	7.54
.437	11.10
.500	12.70
.505	12.83
.510	12.95
.593	15.08
.625	15.88
.630	16.00
.635	16.38
.650	16.51
.697	17.45
.750	17.53
.800	20.32
1.110	28.19
1.135	28.83
1.165	17.53
1.314	33.38

MILITARY PART NO (PIN)	MILITARY CABLE PART NO	TROMPETER PART NO (REF ONLY)
M49142/03-0005	M17/116-RG307	M305-0042-1
M49142/03-0105	M17/116-RG307	M305-0042Y-1
M49142/03-0205	M17/116-RG307	M305-0042S-1
M49142/05-0008	M17/116-RG307	M305-0042-7
M49142/05-0108	M17/116-RG307	M305-0042Y-7
M49142/05-0206	M17/116-RG307	M305-0042S-7
M49142/06-0006	M17/116-RG307	M305-0042-4
M49142/06-0106	M17/116-RG307	M305-0042Y-4
M49142/06-0206	M17/116-RG307	M305-0042S-4
M49142/08-0005	M17/116-RG307	M305-0042-9
M49142/08-0007	M17/116-RG307	M305-0042-11
M49142/11-0007	M17/116-RG307	M305-0042-12

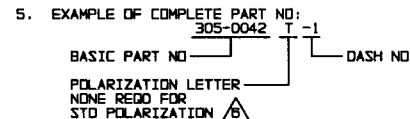
PLUG POLARIZATION CHART (-1 ONLY)				
KEYING LETTER	F DEGREES	G DEGREES	H DEGREES	COLOR BAND
T	100°	150°	110°	RED
U	120°	130°	110°	ORANGE
V	115°	130°	115°	YELLOW
W	125°	110°	125°	GREEN
X	130°	100°	130°	BLUE
Y	110°	140°	110°	VIOLET
Z	100°	160°	100°	GRAY
S	135°	135°	90°	WHITE
NONE	120°	120°	120°	NONE



JACK POLARIZATION CHART (-2, -4 AND -7 ONLY)				
KEYING LETTER	A DEGREES	B DEGREES	C DEGREES	COLOR BAND
T	100°	150°	110°	RED
U	120°	130°	110°	ORANGE
V	115°	130°	115°	YELLOW
W	125°	110°	125°	GREEN
X	130°	100°	130°	BLUE
Y	110°	140°	110°	VIOLET
Z	100°	160°	100°	GRAY
S	135°	135°	90°	WHITE
NONE	120°	120°	120°	NONE



△ POLARIZATION LETTER FOR PLUG OPTIONS SEE TABLE 3 (-1 ONLY) FOR JACK OPTIONS SEE TABLE 4 (-2, -4 AND -7 ONLY)



△ REPLACE CLAMP NUT 8-1580-29, NOTCHED INSERT 8-1800-1, CONE DIELECTRIC 8-1593-29 AND CONE 8-1590-29 WITH CLAMP NUT 305-0486-102, NOTCHED INSERT -102, CONE DIELECTRIC -103 AND CONE -101

- CONCENTRIC TWINAX/TRIAX, 2-LUG, 3-LUG, 4-LUG AND THREADED CABLE PLUGS/RECEPTACLES, INSULATED & NONINSULATED BULKHEAD MOUNT RECEPTACLES & PUSH-IN CABLE PLUGS FOR CABLE NO RG307 (TRIAx)
- FINISH: BODY & CLAMP NUT PER TFS-1A (NICKEL) CENTER & INTERMEDIATE CONTACT PER TFS-1B (GOLD)
- ALL DIM ARE IN INCHES

- △ WHEN CONNECTOR IS SUPPLIED TO MILITARY PART NO. (SEE TABLE 2):
- ALL PARTS NORMALLY PLATED TFS-1A, OR TFS-1U (NICKEL) ARE TO BE PLATED TFS-1M (SILVER)
  - MARK PART WITH MILITARY PIN (SEE TABLE 2) AND "14949"
  - QUALITY CONFORMANCE INSPECTION SHALL BE PER MIL-C-49142 SECTION 4.5

QTY	DESCRIPTION	PART NUMBER	ITEM
TOL UNLESS SPECIFIED			
.001 ±			
.002 ±			
.0005 ±			
ANGLES ±			
OWN	DKC	1-21-99	
CHK			
ENGR			
NEXT ASSY	APPR	129/99	

MATERIAL	CODE IDENT	DRAWING NO.	REV
	14949	305-0042	R

SCALE 1/1 DATE 6-26-70 SHEET 1 OF 3