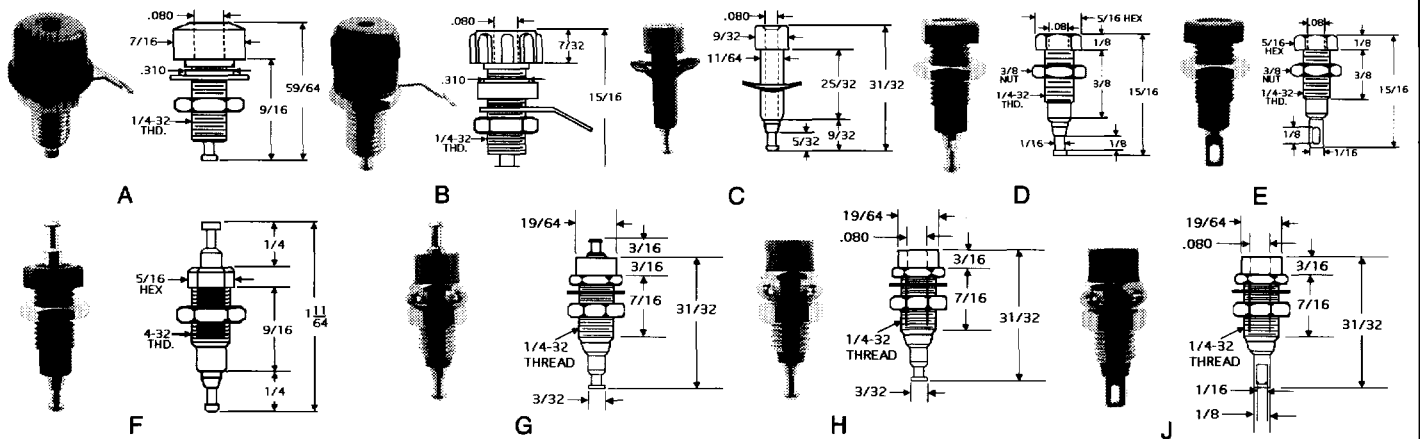


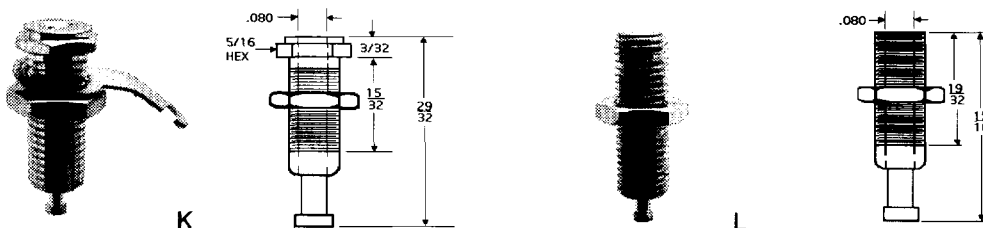
INSULATED TIP JACKS



- BODY:** Metal body jacks are Brass, Nickel-plated.
HEAD: Insulated heads and bodies are molded Polycarbonate.
CONTACT: Phosphor Bronze, bright Tin-plated.
MOUNTING: Mounts in panel hole as indicated, with hardware supplied for fully insulated mounting.
WIRING: Wire lead solders to contact lug, or wraps and solders to turret.
RATING: 10 Amps AC for 10°C temperature rise, continuous duty. Voltage & capacitance ratings as indicated in table.
COLORS: A: Available in 6 colors. Add color number as suffix to part number.
 -101 White-102 Red -103 Black-104 Green -105 Blue-107 Yellow
 B: Available in 10 colors. Add color number as suffix to part number.
 -101 White-102 Red -103 Black-104 Green -105 Blue
 -106 Orange-107 Yellow-108 Brown-112 Violet -113 Gray

PART NO.	ILLUS.	TYPE	MOUNTING HOLE	RATINGS		COLORS
				VOLTAGE	CAPACITY	
202	A	Metal Body, Large Head	5/16	750	4.0 pf	A
241	B	Metal Body, Small Head				
1598	C	All Insulated, Quick Mounting	3/16	1 KV	3.0 pf	B
1505	D	All Insulated, Turret Term.				
1506	E	All Insulated, Eyelet Term.				
1507	F	All Insulated, Feed-Thru Brass Turret				
1503	G	Insulated Body, Metal Shell, Feed-Thru	1/4	2 KV		
3501	H	Insulated Body, Metal Shell, Turret Terminal				
1501		MIL Version Per MIL-C-39024/10				
3502	J	Insulated Body, Metal Shell, Eyelet Terminal			10.0 pf	B
1502		MIL Version Per MIL-C-39024/10			5.0 pf	

UNINSULATED TIP JACKS



- BODY:** Brass, Nickel-plated.
CONTACT: Phosphor Bronze.
MOUNTING: Part #107 mounts in a 1/4" hole in panels up to 3/8" thick, with nut supplied. Part #147 threads into a 1/4-32 tapped hole in the panel, and is locked with the nut supplied.
WIRING: Wire lead solders to lug on jack.
RATING: 15 Amps AC for 10°C temperature rise, continuous duty.

PART NO.	ILLUS.	HEAD MATERIAL
107	K	HEX
147	L	HEADLESS

PRINTED CIRCUIT TEST JACKS

DESCRIPTION: Double entry design; probe inserts from either end of jack. Closed entry construction will not accept probes larger than .084", will contact down to .074". Closed bottom construction keeps jack from fouling with solder or flux. Locking ears hold jack firmly in board until soldered. Precise dimensions allow for automated assembly on boards.

BODY: Molded Nylon per MIL-P-20693.

SPRING: Beryllium Copper.

MOUNTING: Mounts in .052" holes.

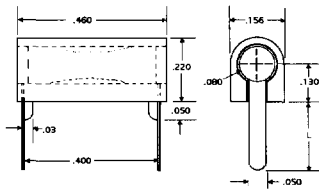
DATA: Insertion force: 30 oz. max. Withdraw force: 8 oz. min. with .080" ($\pm .001$ ") probe.

RATINGS: Operating voltage 1,500 volts, 60 cps RMS, sea level. 350 volts, 60 cps RMS at 50,000 feet. 5 AMP AC max. current rating. Contact resistance 20 Millivolt drop max. at specified current at 25° C.

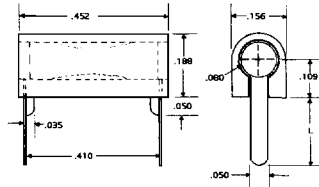
COLORS: Add color number as suffix to part number:

-101 White -102 Red -103 Black -104 Green -105 Blue
-106 Orange -107 Yellow -108 Brown -112 Violet -113 Gray

A



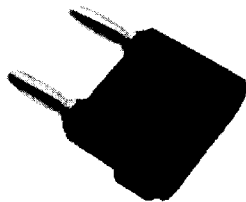
B



SIMILAR TO MIL-C-39024/11A

PART NO.	ILLUS.	LENGTH	PLATING	BOARD THKNS.
325	A	.130	GOLD	1/16
321	A	.219	GOLD	1/8
COMMERCIAL TYPES				
430	B	.203	GOLD	3/16

PLUG INTO THE Ntt-SMITH ADVANTAGE



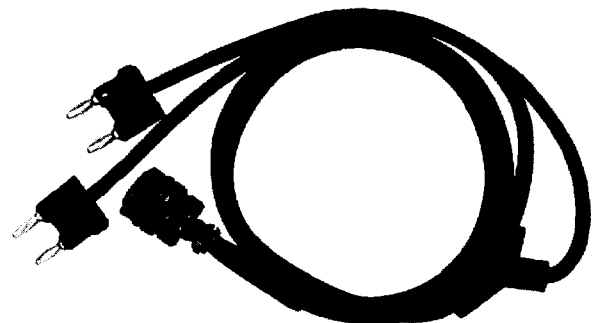
➤ More Than 20,000 Individual Components Designed And Manufactured For Industry.

➤ Extensive Design And Production Facilities To Help You Meet Special Requirements.

➤ Product Reliability Backed By More Than 50 Years of Leadership Technology.

➤ Constant In-Plant Inventories For Continual Product Availability.

➤ Stocked And Sold By Major Industrial Electronic Distributors.



Special Military Cable Assembly