

Customer Information Sheet

DRAWING No.- M30-120XX00

SHEET 2 OF 2

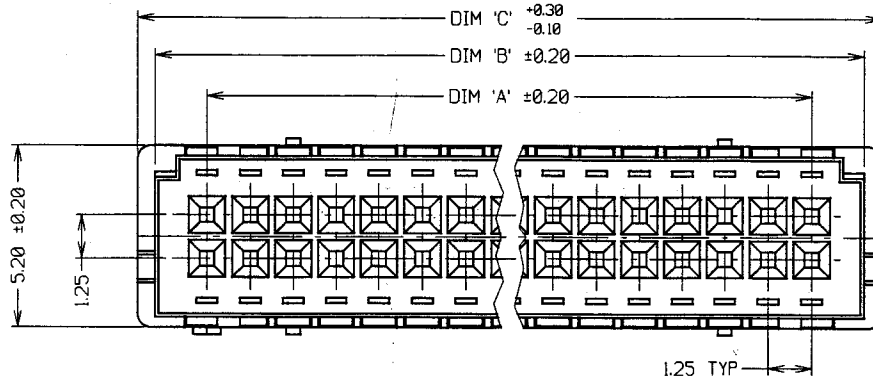
IF IN DOUBT - ASK

(C)

NOT TO SCALE

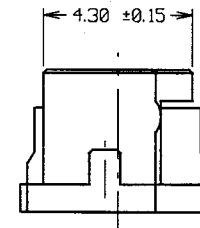
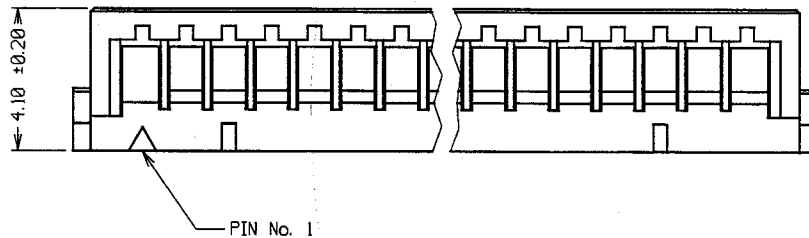
THIRD ANGLE PROJECTION

ALL DIMENSIONS IN mm



NOTES:

1. TO BE USED IN CONJUNCTION WITH M30-1000006
OR M30-1010006 CRIMP CONTACTS.



HARWIN PART No.	No. OF WAYS	DIM 'A'	DIM 'B'	DIM 'C'
M30-1201000	10 + 10	11.25	14.25	15.25
M30-1201100	11 + 11	12.50	15.50	16.50
M30-1201500	15 + 15	17.50	20.50	21.50
M30-1202000	20 + 20	23.75	26.75	27.75
M30-1202100	21 + 21	25.00	28.00	29.00

SPECIFICATIONS:

MATERIAL:

MOULDING = POLYAMIDE 66 (UL94V-0)

ELECTRICAL:

CURRENT RATING = 1A AC/DC

VOLTAGE RATING = 150V AC/DC

CONTACT RESISTANCE = 30 MILLIOHMS MAX

DIELECTRIC WITHSTANDING = 500V AC

INSULATION RESISTANCE = 500 MEGOHMS MIN

MECHANICAL:

CRIMP RETENTION IN MOULDING = 5.9N MIN

INSERTION FORCE = 4.9N MAX

WITHDRAWAL FORCE = 0.5N MIN

ENVIRONMENTAL:

TEMPERATURE RANGE = -55°C TO +85°C

PACKING:

BAG

FOR COMPLETE SPECIFICATION, SEE COMPONENT
SPECIFICATION C025XX (LATEST ISSUE)

ORDER CODE:

M30-120XX00

No. OF WAYS PER ROW
10, 11, 15, 20, 21

HARWIN

HARWIN INC U.S.A. TEL: (812) 285 0055 FAX: (812) 285 0056	HARWIN PLC UK TEL: 01705 370451 FAX: 01705 314590	HARWIN PTE SINGAPORE TEL: 65 7794909 FAX: 65 7793868	HARWIN CONNECTORS KOREA TEL: 822 521 0747 FAX: 822 521 0749
--	--	---	--

TOLERANCES

X. = ±1mm
X.X = ±0.25mm
X.XX = ±0.10mm
X.XXX = ±0.01mm
ANGLES = ±1°
UNLESS STATED

MATERIAL:

SEE ABOVE

FINISH:

CLEAN

S/AREA:

mm²

TITLE:

1.25mm PITCH DIL
CRIMP HOUSING

DRAWING NUMBER: ?

M30-120XX00

1	04.08.97	----
ISS.	DATE	C/N
APPROVED:	<i>[Signature]</i>	
CHECKED:	<i>[Signature]</i>	
DRAWN:	W. BOURNE	
CUSTOMER REF.		
ASSEMBLY DRG:		

SHT
2
OF
2