

## Curvette LRA-Series Single Pole Lighted Rocker & Paddle Switches



Since its introduction, the Curvette switch has become the barometer for versatility and performance in the miniature switch market. This lighted version features the very same self cleaning contacts, International approvals, along with a wide variety of circuits, ratings, and actuator options makes the Curvette the switch of choice for sundry other markets including HVAC, Office Lighting, Transportation, Commercial Food and Lawn and Garden.

### Dielectric Strength

UL/CSA:  
1000V-live to dead metal parts  
VDE:  
4000V - live to dead metal parts;  
750V - across open contacts

### Electrical Life

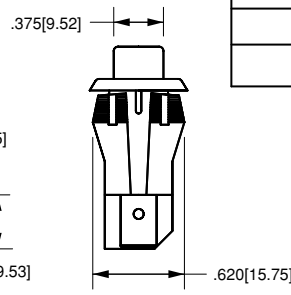
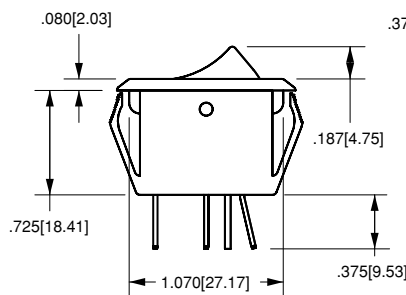
100,000 cycles

### Mechanical Life

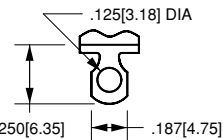
100,000 cycles

### Operating Temperature

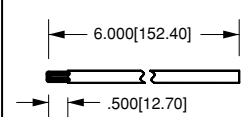
32°F to 185°F (0°C to 85°C)



.250 TAB (Q.C.)

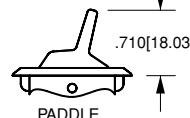


SOLDER LUG

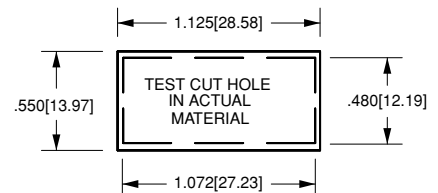


WIRE LEAD

### TERMINAL TYPE



PADDLE



### MOUNTING HOLE

Panel Thickness: .025 min. - .187 max.  
Specific cutout dimension range  
dependent on panel thickness and material.  
Consult factory.

**LRA911 - R S - B / 250N**

1  
Base Part Number

2  
Actuator  
Style

3  
Actuator  
Color

4  
Bezel  
Color/Style

5  
Lamp Voltage

### 1 BASE PART NUMBER: SERIES/CIRCUITRY/RATING<sup>2</sup>/TERMINATION

125 neon lamp (use 125N in Selection 5 Lamp Voltage)

10A 250VAC; 16A 125VAC; 10(4)A 125VACu

	Solder Lugs	.250 Tabs	Wire Leads
OFF-NONE-ON	LRA210	LRA211	LRA215

250 neon lamp (select 250N in selection 5 Lamp Voltage)

15A 250 VAC; 10A 250VAC; 16A 125vAC; 10(4)A 250 T85

	Solder Lugs	.250 Tabs	Wire Leads
OFF-NONE-ON	LRA910	LRA911	LRA915

Incandescent lamp (select 006V-024V in selection 5 Lamp Voltage)

10A 30V

	Solder Lugs	.250 Tabs	Wire Leads
OFF-NONE-ON	LRA510	LRA511	LRA515

### 4 BEZEL COLOR/STYLE

#### STANDARD

B black  
W white



#### OVAL

1 black  
2 white



### 5 LAMP VOLTAGE

006V 6 volts incandescent

012V 12 volts incandescent

018V 18 volts incandescent

024V 24 volts incandescent

125N<sup>1</sup> 125 volts neon

250N<sup>1</sup> 250 volts neon

### 2 ACTUATOR STYLE

P paddle  
R rocker translucent  
C rocker clear

### 3 ACTUATOR COLOR

#### translucent

A amber  
C white  
P yellow  
S red  
W pale red

#### clear

A amber  
C clear  
G<sup>1</sup> green  
B<sup>1</sup> blue  
R red

### NOTES

LED illumination, PC terminals, independent lamps, and additional color options are available. Consult factory.

1 Neon lamps not available with blue or green actuators.

2 Consult factory for additional ratings.