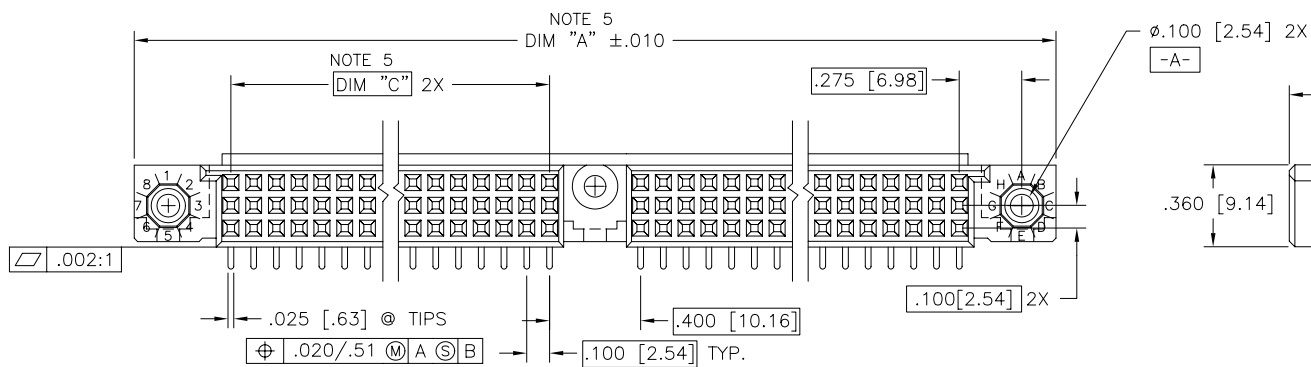
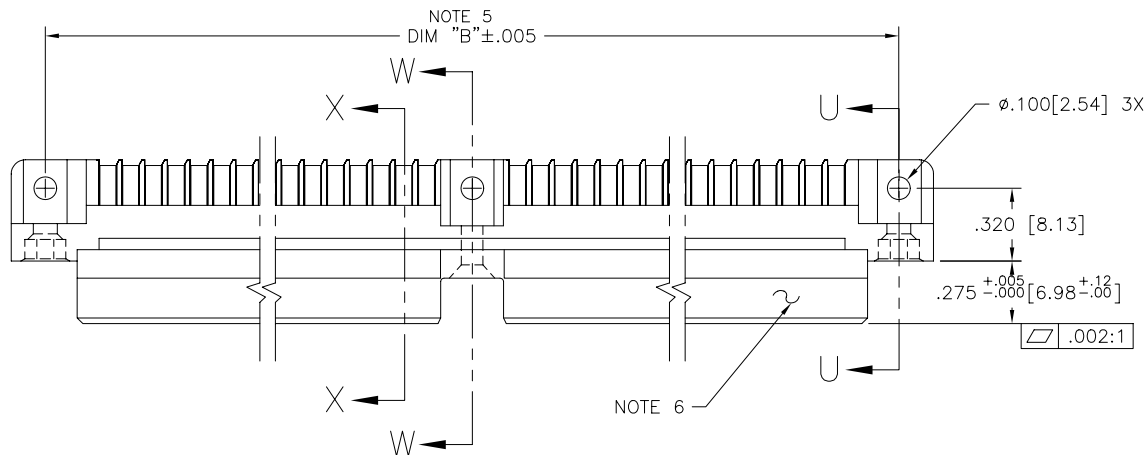




FCIconnect.com

Copyright FCI

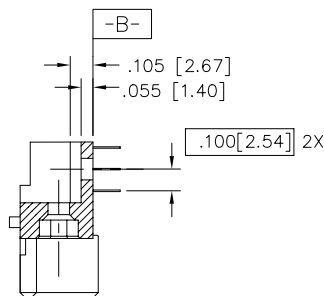
PRODUCT NUMBER  
SEE NOTE 1, TABLE ON SHT 2



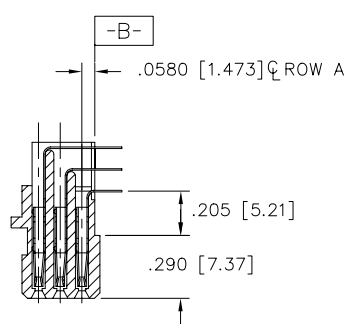
mat'l. code NOTE 3				surface ISO 1302 <input checked="" type="checkbox"/>	tolerance ISO 406 ISO 1101	projection 	product family HPC
ltr	ecp	no	dr	date	tolerances unless otherwise specified	INCH/MM	title
F	v60864	GIP		6/05/96	angles	.XX $\pm .01 / .3$	3 ROW R/A RECEPTACLE
G	v61331	GIP		9/04/96	linear	.XXX $\pm .005 / .13$	SOLDER TAIL, 1 GUIDE PIN
H	v90002	HTB		1/05/99	$\sigma \pm 2'$	.XXXX $\pm .0020 / .051$	dwg no
J	v00254	JWS	1/13/00	dr	S. ROYER	2/20/92	sheet 1 of 2 size
K	v05-0900	DCH	9/20/05	enrg	D. BRANN	2/20/92	50300
L	v05-1041	HTB	11/14/05	chr	D. BRANN	2/20/92	A3
M	M06-0255	MNR	7/07/06	appd	D. BRANN	2/20/92	type
sheet	revision	M	M				Product Customer Drawing
index	sheet	1	2				

form: A3

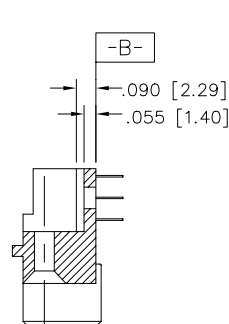
PRODUCT NUMBER	CONTACT PLATING	TAIL PLATING	TAIL LENGTH
50300-1YYYYE	30u"/0.76u GOLD	TIN/LEAD	.125±.010 / 3.18±.25
50300-1YYYYF			.145±.010 / 3.68±.25
50300-1YYYYH			.180±.010 / 4.57±.25
50300-3YYYYE	50u"/1.27u GOLD	TIN/LEAD	.125±.010 / 3.18±.25
50300-3YYYYF			.145±.010 / 3.68±.25
50300-3YYYYH			.180±.010 / 4.57±.25
50300-5YYYYE	30u"/0.76u GXT	TIN/LEAD	.125±.010 / 3.18±.25
50300-5YYYYLF		TIN	.125±.010 / 3.18±.25
50300-5YYYYF		TIN/LEAD	.145±.010 / 3.68±.25
50300-5YYYYFLF		TIN	.145±.010 / 3.68±.25
50300-5YYYYH		TIN/LEAD	.180±.010 / 4.57±.25
50300-5YYYYHLF		TIN	.180±.010 / 4.57±.25



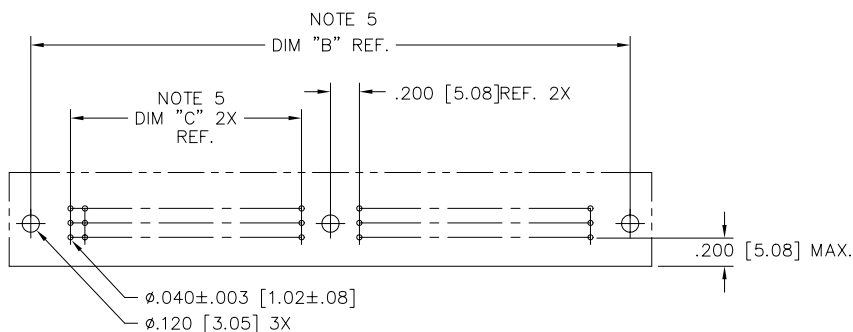
SECTION U-U



SECTION X-X



SECTION W-W



RECOMMENDED PCB LAYOUT  
(ALL HOLES LOCATED ON .100 [2.54] GRID  
UNLESS OTHERWISE SPECIFIED)

NOTES:

1. PRODUCT NUMBERING CODE:  
50300 - X YYY Z LF  
LEAD FREE (OPTIONAL)  
TAIL LENGTH(NOTE 5)  
NO. OF POSITIONS(NOTE 2)  
PLATING(NOTE 4)  
BASE NUMBER

PRODUCT NUMBERING CODE FOR  
SELECT LOAD PART NUMBERS:  
50300 - XXXXX LF  
LEAD FREE (OPTIONAL)  
SEQUENCE NUMBER  
ALWAYS 'XX'  
BASE NUMBER

- THIS PRODUCT IS CONFIGURED IN SIZES OF 20 THRU 122 COLUMNS IN INCREMENTS OF TWO.  
i.e.: 20,22,24,26.....118,120,122.
- HOUSING MATERIAL: GLASS AND MINERAL FILLED THERMOPLASTIC.  
CONTACT MATERIAL: BeCu
- COMPANY NAME, PART NUMBER AND LOT CODE TO APPEAR ON THIS SURFACE PER BUS-12-108.
- LENGTH DIMENSION CALCULATIONS:  
DIM "A"= .100/2.54 x NO. OF COLUMNS + 1.05/26.7  
DIM "B"= .100/2.54 x NO. OF COLUMNS + .75/19.05  
DIM "C"= .100/2.54 x NO. OF COLUMNS DIVIDED BY 2 - .100/2.54.
- THIS PRODUCT (WITH "LF" SUFFIX) MEETS EUROPEAN UNION DIRECTIVES AND OTHER COUNTRY REGULATIONS AS DESCRIBED IN GS-22-008.
- THIS HOUSING WILL WITHSTAND EXPOSURE TO 260 DEGREES C PEAK TEMPERATURE FOR 10-30 SECONDS IN A CONVECTION, INFRA-RED OR VAPOR PHASE REFLOW OVEN.

mat'l. code	surface	tolerance	projection	product family
NOTE 3	ISO 1302 ✓	ISO 406 ISO 1101		HPC
ltr	ecn	no	dr	date
F	v60864	GIP	6/05/96	
G	v61331	GIP	9/04/96	
H	v90002	HTB	1/05/99	
J	v00254	JWS	1/13/00	dr
K	v05-0900	DCH	9/20/05	enr
L	v05-1041	HTB	11/14/05	chr
M	M06-0255	MNR	7/07/06	app
revision	M	M		
sheet	1	2		
index				