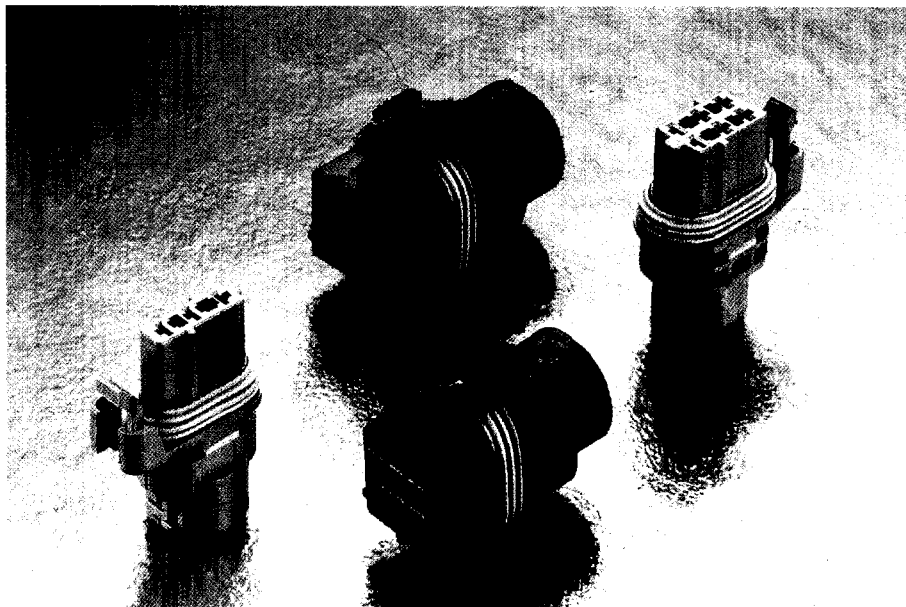


# Component to wire connectors SICMA-2

## Aggregate housings for 2.8 mm terminals

### Features

- 3-6-9 and 12 position housings available
- Reduced size sealed housings
- Circumferential interface seal
- Waterproof application with single wire seal
- Corrugated tube locking device
- Plastic locking ring
- Mechanical polarization
- Several colour codings available



Part Numbers	No. of position	Terminal size	Type	Colour
211 PC033S0003	3	2.8 mm	Female housing	Black
211 PC033S8003	3	2.8 mm	Female housing	Grey
211 PC063S0003	6	2.8 mm	Female housing	Black
211 PC063S1003	6	2.8 mm	Female housing	Brown
211 PC063S8003	6	2.8 mm	Female housing	Grey
211 PC093S0003	9	2.8 mm	Female housing	Black
211 PC0123S0003	12	2.8 mm	Female housing	Black
211 PC0123S8003	12	2.8 mm	Female housing	Grey

### Performance characteristics

- Temperature range :  
from -40°C to +125°C
- Contact retention force : > 120 N
- Contact insertion force : < 15 N
- Sealing protection : IP 68

### Construction

- Housing material : PBT
- Interfacial seal : Silicone

### Tooling

- Female terminal removal tool : 210S045

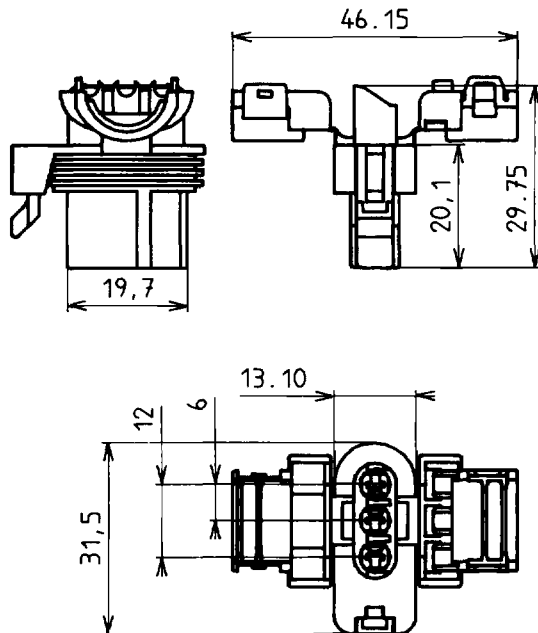
### Connector compatibility

- Usable terminals :
  - Sicma-2 2.8 mm female terminals
  - Sicma-3 2.8 mm female terminals

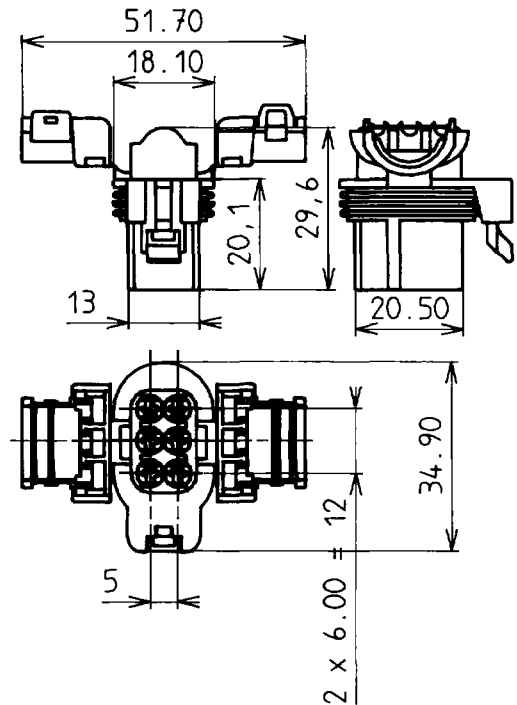
# Component to wire connectors SICMA-2

## Dimensional characteristics

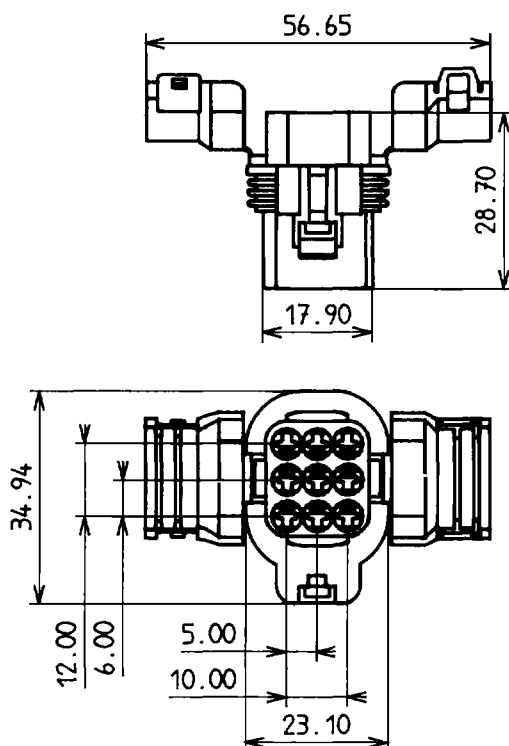
3 way housing



6 way housing



12 way housing



9 way housing

