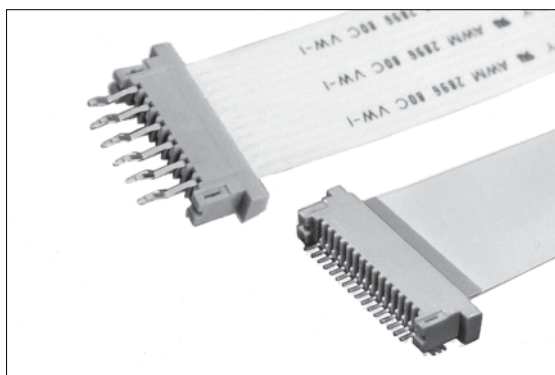
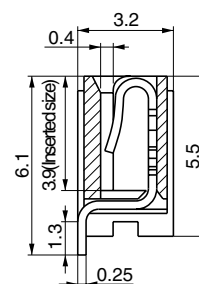
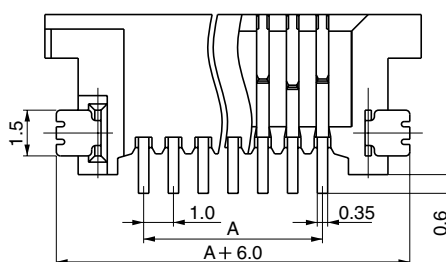
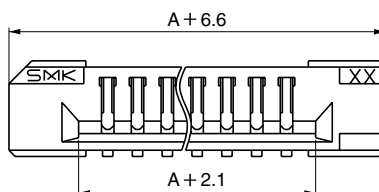


# FC-10 Series 1.0mm Pitch (SMT & DIP Type)



## ● SMT Type CFF23□□-0150F

↑ No. of Pins



### ■ Features

1. Utilization of an LIF structure allows for simple and easy insertion.
2. Choice of versions available, such as SMT and dip types, and lower or upper contact type.

### ■ Specification

1. Rating : 0.5A, 50V AC/DC max.
2. Contact Resistance : 30mΩ, max., initially
3. Insulation Resistance : 1000MΩ, min. at 500V DC
4. Withstanding Voltage : 500V AC (for one minute)
5. Operating Temperature Range : -25°C to +70°C

### ■ Materials and Plating

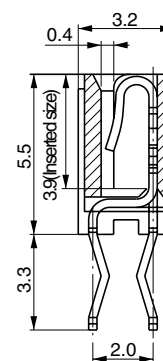
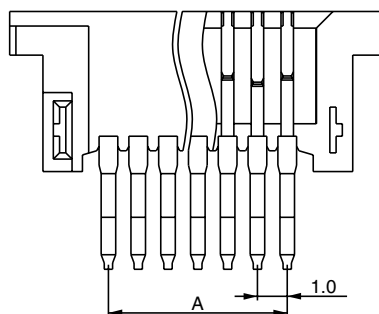
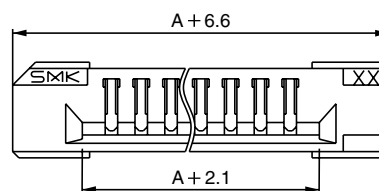
- Housing : Thermoplastic Resin, Natural Color, 94V-0
- Contact : Cu Alloy, Au Plating

### ■ Note

Please contact our local sales agent for supply on embossed tape.

## ● DIP Type CFF51□□-0150F

↑ No. of Pins



□□	No. of Pins	A	□□	No. of Pins	A
05	5	4.0	18	18	17.0
06	6	5.0	19	19	18.0
07	7	6.0	20	20	19.0
08	8	7.0	21	21	20.0
09	9	8.0	22	22	21.0
10	10	9.0	23	23	22.0
11	11	10.0	24	24	23.0
12	12	11.0	25	25	24.0
13	13	12.0	26	26	25.0
14	14	13.0	27	27	26.0
15	15	14.0	28	28	27.0
16	16	15.0	29	29	28.0
17	17	16.0	30	30	29.0

●List of the FC-10 Series

Part No.	Contact Position	Structure	P.C. Board Dimension
CFF23□□-0150F SMT—Right Angle—	Upper		
CFF43□□-0150F SMT —Reverse Right Angle—	Lower		
CFF41□□-0150F SMT—Straight—	—	 Pin No.1	 Pin No.1
CFF51□□-0150F DIP—Straight—	—		 Pin No.1
CFF33□□-0150F DIP—Right Angle—	Upper		 Pin No.1
CFF83□□-0150F DIP —Reverse Right Angle—	Lower		 Pin No.1
CFF24□□-0150F SMT—Right Angle—	Upper		

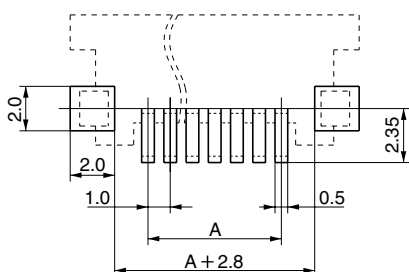
■ P.C. Board Dimension

■ Applicable FPC/FFC Dimension (t=0.3±0.05)

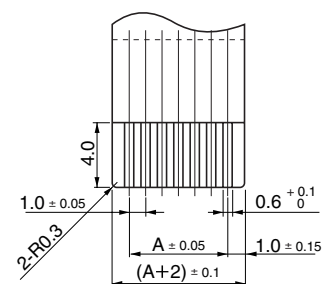
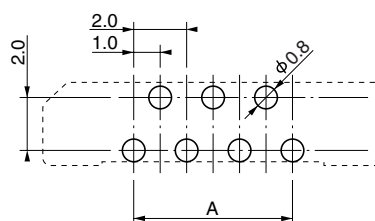
\* For CFF24□□-0150F, please refer to the above table.

\*For CFF24□□-0150F, please contact us.

● SMT Type



● DIP Type



● FPC plating to recommend : Au plating