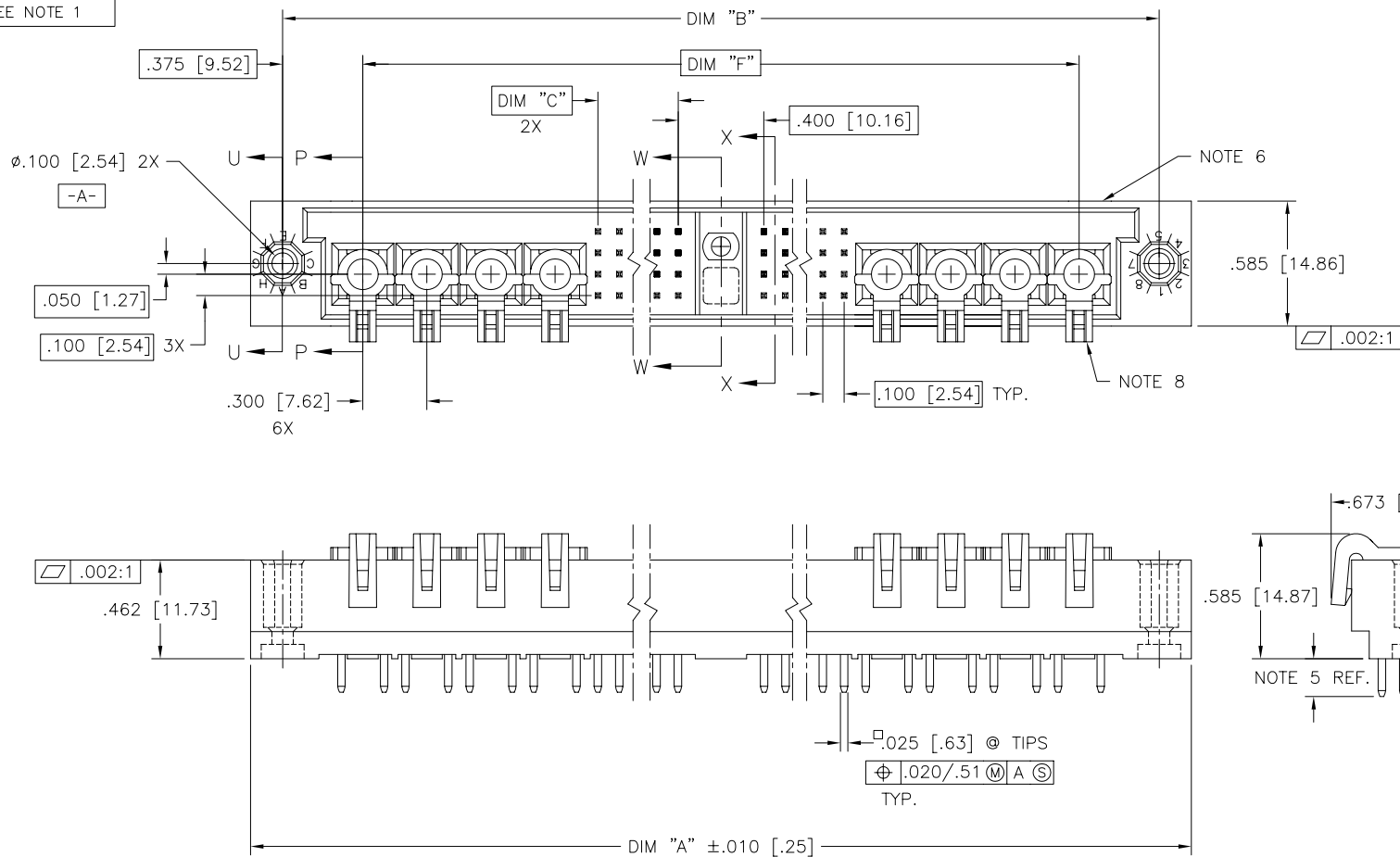




FCIconnect.com

Copyright FCI

PRODUCT NUMBER
SEE NOTE 1



mat'l. code NOTE 3				surface ISO 1302 ✓	tolerance ISO 406 ISO 1101	projection INCH/MM	product family HPC
ltr	ecn	no	dr	date	tolerances unless otherwise specified		title
A	V22185	RDS		5/11/92	angles	.XX±.01/.3	4 ROW VERTICAL HEADER
B	V40263	PDP		1/14/94	linear	.XXX±.005/.13	SOLDER TAIL, 1 G.P., 8 P.P.
C	V41237	GAH		8/17/94	0'±2'	.XXXX±.0020/.05	dwg no
D	V91070	HTB	dr	5/17/99	D.SHEAFFER	5/4/92	sheet 1 of 2 size
E	V00274	JWS	enr	2/2/00	S.CLARK	5/11/92	50543
F	M06-0260	MHT	chr	7/07/06	S.CLARK	5/11/92	A3
			appd		S.CLARK	5/11/92	type
sheet	revision	F	F				Product Customer Drawing
index	sheet	1	2				

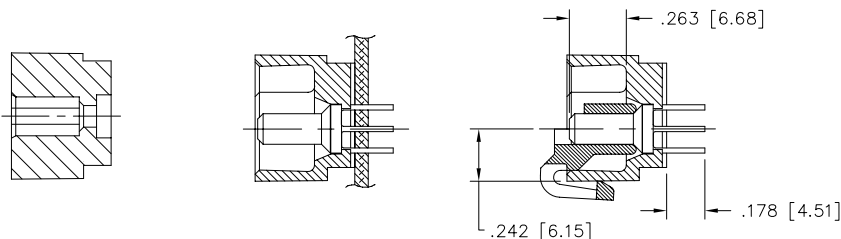
form: A3

PDM: Rev:F

STATUS Released

Printed: Jul 12, 2008

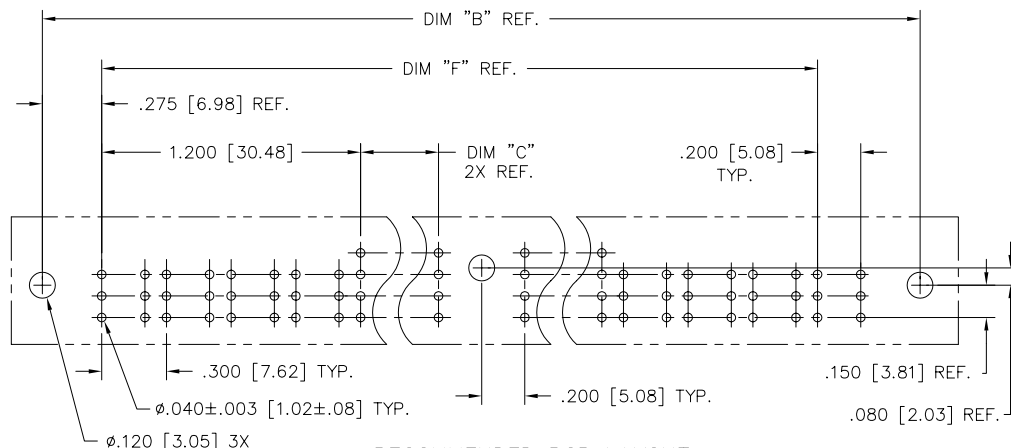
PRODUCT NUMBER	DIM.	LENGTH FORMULAS
SEE NOTE 1	DIM "A"	.100/2.54 x NO. OF COLUMNS + 3.45/87.6
	DIM "B"	.100/2.54 x NO. OF COLUMNS + 3.150/80.01
	DIM "C"	.100/2.54 x NO. OF COLUMNS DIVIDED BY 2 -.100/2.54
	DIM "F"	.100/2.54 x NO. OF COLUMNS + 2.400/60.96



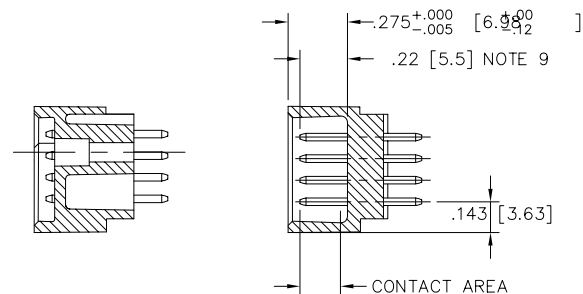
SECTION U-U

DETAIL P
(INSTALLED IN
PCB, NOTE 8)

SECTION P-P
(W/LOCATOR,
SEE DETAIL P)



RECOMMENDED PCB LAYOUT
(ALL HOLES LOCATED ON .100/2.54 GRID
UNLESS OTHERWISE SPECIFIED)



SECTION W-W

SECTION X-X

NOTES:

- PRODUCT NUMBERING CODE:
50543 - X YYY Z
TAIL LENGTH (NOTE 5)
NO. OF POSITIONS (NOTE 2)
PLATING (NOTE 4)
BASE NUMBER
- PRODUCT NUMBERING CODE FOR
SELECT LOAD PART NUMBERS:
50543 - XYYYY
SEQUENCE NUMBER
ALWAYS 'XX'
BASE NUMBER
- THIS PRODUCT IS CONFIGURED IN SIZES OF 20 thru 120
COLUMNS IN INCREMENTS OF TWO.
i.e.: 20,22,24,26,.....116,118,120.
- HOUSING MATERIAL: GLASS AND MINERAL FILLED
HIGH TEMP. THERMOPLASTIC. FLAME RETARDANT PER
UL94V-0. COLOR: BLACK.
PIN MATERIAL: PHOS BRONZE
- PLATING CONTACT AREA OPTIONS:
A = 50u" Ni UNDER ALL WITH 30u" Au ON CONTACT
AREA, SnPb ON PCB INTERFACE AND Au FLASH
ON ALL OTHER AREAS.
- TAIL LENGTH OPTIONS: (±.015/.38)
A = .177/4.5
J = .120/3.05
- MANUFACTURE'S NAME, PART NUMBER AND LOT CODE TO
APPEAR ON THIS SURFACE PER BUS-12-108.
- FOR DOCUMENTATION MENU, SEE BUS-01-057.
- POWER PIN LOCATOR (REF. 50234) TO BE REMOVED
AFTER SOLDERING.
- REFERENCE 50802 FOR F.M.L.B. OPTIONS AND WORKSHEET.

mat'l. code	surface ISO 1302 ✓ ISO 406 ISO 1101	tolerance ISO 1302 ✓ ISO 406 ISO 1101	projection INCH/MM	product family HPC
ltr F	ecn no dr	date	tolerances unless otherwise specified angles linear 0°±2'	title 4 ROW VERTICAL HEADER SOLDER TAIL, 1 G.P., 8 P.P.
			dr D.SHEAFFER 5/4/92	dwg no sheet 2 of 2 size
			enr S.CLARK 5/11/92	50543 A3
			chr S.CLARK 5/11/92	type Product Customer Drawing
			appd S.CLARK 5/11/92	
sheet index	revision sheet			