

X# DWG SIZE J10 C DATA CONTAINED IN THIS DOCUMENT IS UNCLASSIFIED EXCEPT WHERE SHOWN OTHERWISE. DATE 12/1/92

REV	EO	DESCRIPTION	DWN	APPROVED	DATE
C	10051	PICTORIALLY CHANGED 1 00 FLARED SEALING SLEEVE TO STRAIGHT (1.25) LONG SEALING SLEEVE: GENERAL UPDATE	DKC	<i>[Signature]</i>	12/1/92

TABLE 1

DASH NO	MODEL NO	CENTER CONTACT/INTD CONTACT TYPE	FIG NO
-1	TB1459CFLP	SOCKET/PIN	1
-2	TB1459CFLS	PIN/SOCKET	1
-3	TB1459CPR	SOCKET/PIN	2
-4	TB1459CPS	PIN/SOCKET	2
-5	TB1459CSP	SOCKET/PIN	3
-6	TB1459CSP	PIN/SOCKET	3
-7	TB1459CSP	SOCKET/PIN	4
-8	TB1459CSP	PIN/SOCKET	4

TABLE 2

CABLE GROUP NO	CABLES ACCOMMODATED	A DIM	B DIM	C DIM	HEX PER	ASSEMBLE PER
-201	M17-17B-00002					
-202	TWC-7B-1, TROMPETER					
-203	TWC-12A-1A, TROMPETER					
-204	10602 RAYCHEM					
-205	TWC-7B-1P2, TROMPETER					
-206	7826D0130, RAYCHEM					
-208	202-3942, MICRODOT	1.365	.334	.255		TAI-182
-209	202-3942, MICRODOT					
-212	2524E0114, RAYCHEM					
-217	6C875TMC24H, GRUMMAN					
-218	EP0221888, RAYCHEM					
-219	2528D1114, RAYCHEM					
-220	6C875SR1, GRUMMAN					
-221	10813 RAYCHEM					
-222	10813 RAYCHEM					
-223	1MMS2-1149, HUGHES					

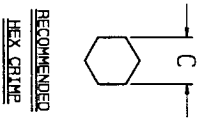
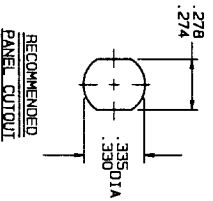
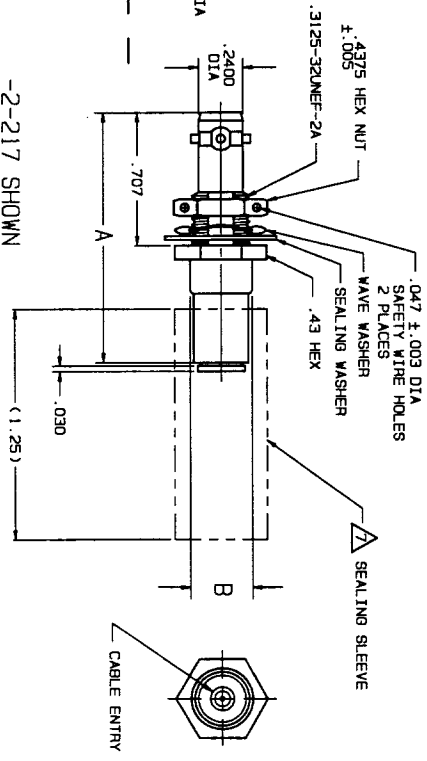
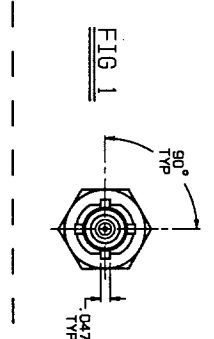
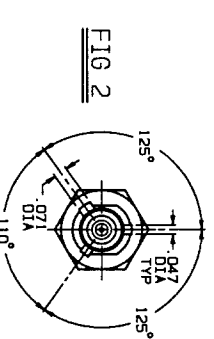
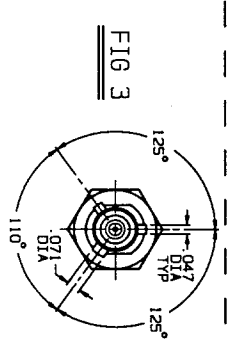
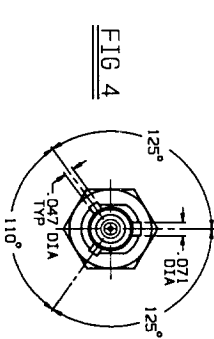
INCH	MM
.003	0.08
.0050	0.13
.010	0.25
.030	0.76
.047	1.19
.071	1.80
.128	3.25
.2400	6.10
.255	6.48
.274	6.96
.278	7.06
.334	8.38
.335	8.48
.43	10.92
.4375	11.11
.707	17.96
1.25	31.75
1.365	34.67

SEALING SLEEVE & CRIMP BUSHING LOOSE WITH EACH CONNECTOR EXCEPT NOT USED ON -205, -208 & -223

EXAMPLE OF COMPLETE MODEL NO:
 TB1459C - BASIC MODEL NO (SEE TABLE 1)
 P - 201 - CABLE GROUP NO (SEE TABLE 2)
 CENTER & INTERMEDIATE CONTACT TYPE (SEE TABLE 1)
 LUG POLARIZATION
 FL = 4-LUG, FIG 1
 P = 3-LUG, FIG 2
 R = 3-LUG, FIG 3
 W = 3-LUG, FIG 4

EXAMPLE OF COMPLETE PART NO:
 305-0733 - BASIC PART NO
 -201 - DASH NO (LUG POLARIZATION, CENTER & INTERMEDIATE CONTACT TYPE: SEE TABLE 1)
 CABLE GROUP NO (SEE TABLE 2)
 LUG POLARIZATION, CENTER & INTERMEDIATE CONTACT TYPE: SEE TABLE 1

- MAX PANEL THK .128
- CONCENTRIC TWIXX 4 PIECE ASSY - FULL CRIMP
- INSULATED BULKHEAD MOUNT RECEPTACLE, SOCKET CENTER CONTACT AND PIN INTERMEDIATE CONTACT OR PIN CENTER CONTACT AND SOCKET INTERMEDIATE CONTACT
- FINISH: TFS-1T (500 HOURS SALT SPRAY)
- ALL DIM ARE IN INCHES



QTY	DESCRIPTION	PART NUMBER	ITEM
100 UNLESS SPECIFIED	TROMPETER	TB1459CFL/FL S/PP/	
XXX 1.010	ELECTRONICS, INC.	PS/RP/RS/WP/WS	
XXXX .0050			
ANGLES 0.30			
DWN DKC 12-3-92	MATERIAL	CODE IDENT	DRAWING NO.
CHK <i>[Signature]</i>		14949	305-0733
ENGR <i>[Signature]</i>			
APPR <i>[Signature]</i>	SCALE 2/1	DATE 3/7/90	SHEET 1 OF 2