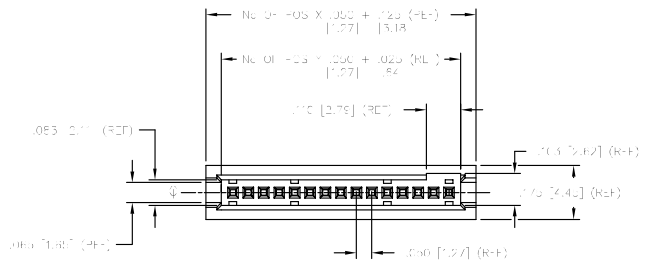


REF



ALLOWABLE COPLANARITY POSITIONS	
-05 THRU -29	.004 MAX
-30 THRU -39	.006 MAX
-40 THRU -50	.008 MAX

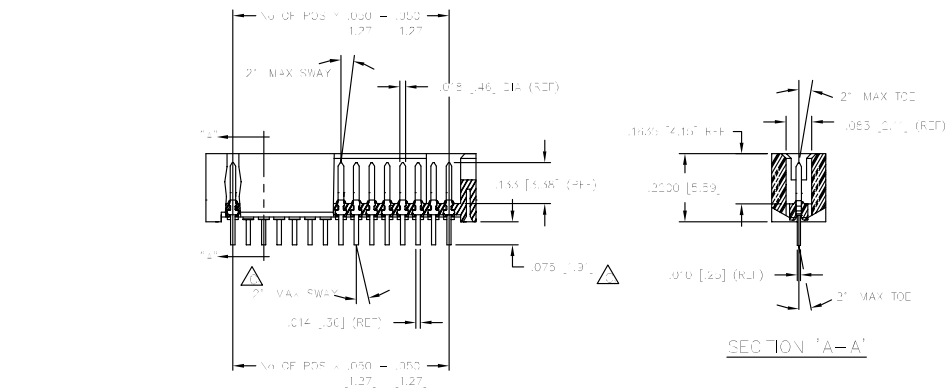
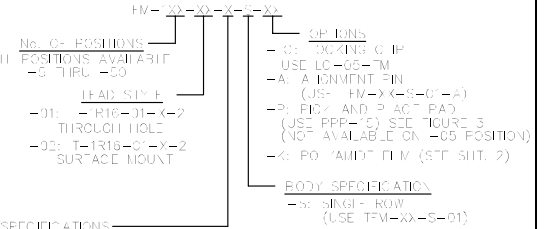


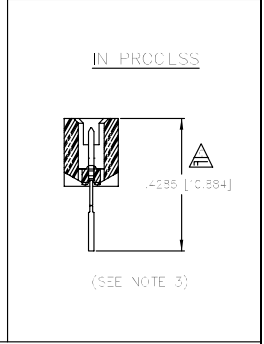
FIGURE 1

PROCESS SPECIFICATIONS		FINISH	
REF. PLATE COPLANARITY ±.01*	REF. HEAD COPLANARITY ±.005	AWR17	±1*
TWO PLATE COPLANARITY ±.01*	FOUR PLATE COPLANARITY ±.0025	.050 C.I.L. SINGLE ROW SHROUDED TERMINAL STRIP	



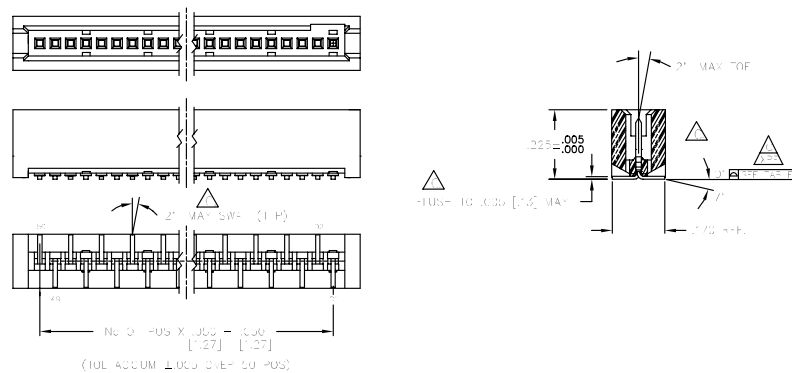
PLATING SPECIFICATIONS

- S: SOLDER CUP = .00030 GOLD POST, .00050-.00250 BRIGHT ACID TIN TAIL (USE T=RT6-0-S-02) (SPECIFY -S IN PLATING SUFFIX -X)
- T: FLASHED GOLD = .00065 GOLD POST, .00050-.00250 BRIGHT ACID TIN TAIL (USE T=RT6-0-T-02) (SPECIFY -T IN PLATING SUFFIX -X)
- P: GOLD FLASHED PALLADIUM NICKEL = .00030 PALLADIUM NICKEL, FLASHED WITH .00003 GOLD POST, .000150-.000250 BRIGHT ACID TIN TAIL (USE T=RT6-0-P-02) (SPECIFY -P IN PLATING SUFFIX -X)



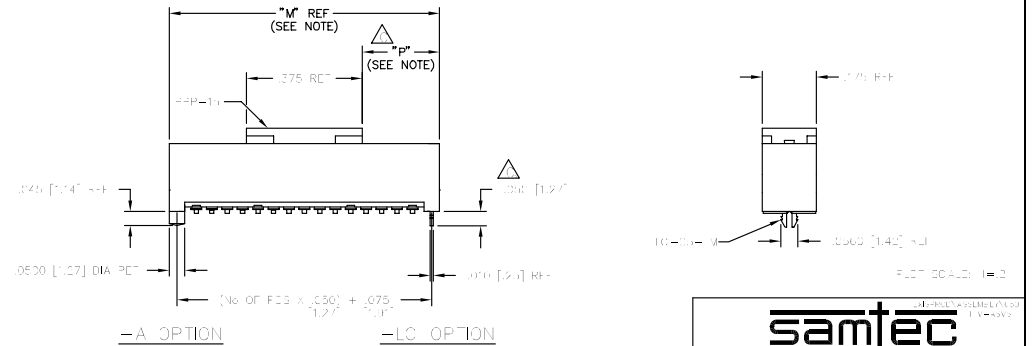
- NOTES:**
- MINIMUM FLUID TIGHTNESS TO BE 1 MIN. MIN.
 - COP PLANARITY ±.01
 - MANUFACTURING PROCESS DIVERGENCE DESIGNED TO 4σ OF TIGHTNESS
 - △ IN-HOLE IN A THERMAL BUBBLE OR STATISTICAL PROCESS CONTROL USE
 - ALL DIMENSIONS ARE IN MILLIMETERS

FIGURE 2 DIFFERENT AS SHOWN, OTHERWISE SAME AS FIG. 1



PROPRIETARY NOTE
 SAMTEC CORPORATION
 1000 W. 15th Street
 Phoenix, AZ 85002
 (602) 998-3300
 FAX: (602) 998-3301
 WWW.SAMTEC.COM

FIGURE 3 DIFFERENT AS SHOWN, OTHERWISE SAME AS FIG. 1



NOTE: "M" = (NO OF POS √ .050 [1.27] + .125 [3.18])
 "P" = Ⓢ("M" - .375 [9.53]) / 2 @ ±.020 [.51]

samtec

1000 W. 15th Street
 Phoenix, AZ 85002
 (602) 998-3300
 FAX: (602) 998-3301
 WWW.SAMTEC.COM