

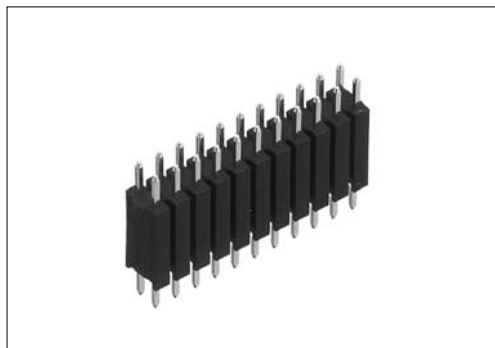
Straight through hole type male connector for PCB LPC-()MH2()

2 mm pitch connector

For PCB

Straight Through hole

RoHS

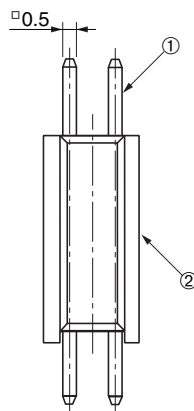
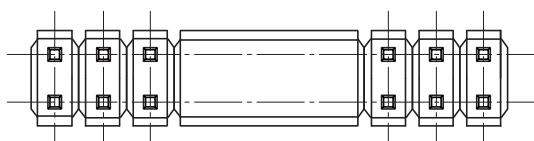
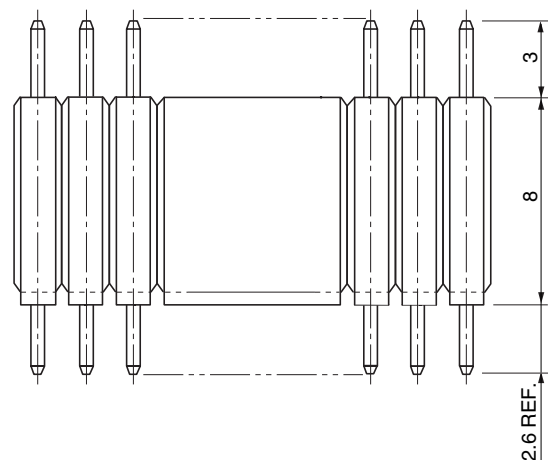
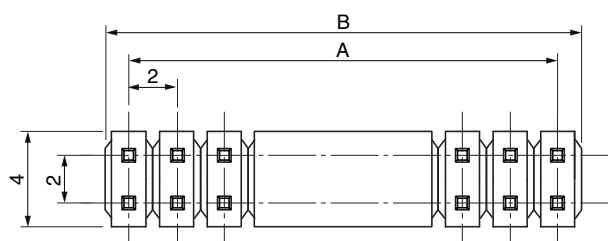


● Configuration of product Part No.

LPC- () MH2 ()

① ② ③

- ① Series name
- ② No. of contacts: 2-50
- ③ Contact plating
+S: Tin plate
G : Gold plate



● Dimensions

Part No.	A	B
LPC-2MH2()	-	2
LPC-4MH2()	2	4
LPC-6MH2()	4	6
LPC-8MH2()	6	8
LPC-10MH2()	8	10
LPC-12MH2()	10	12
LPC-14MH2()	12	14
LPC-16MH2()	14	16
LPC-18MH2()	16	18
LPC-20MH2()	18	20
LPC-22MH2()	20	22
LPC-24MH2()	22	24
LPC-26MH2()	24	26
LPC-28MH2()	26	28
LPC-30MH2()	28	30
LPC-32MH2()	30	32
LPC-34MH2()	32	34
LPC-36MH2()	34	36
LPC-38MH2()	36	38
LPC-40MH2()	38	40
LPC-42MH2()	40	42
LPC-44MH2()	42	44
LPC-46MH2()	44	46
LPC-48MH2()	46	48
LPC-50MH2()	48	50

● Components

①	Insulator
②	Contacts

Because some combinations of "Configurations of Product Part No.", are under consideration for development, please contact us for availability details.

Mating connectors: LPC series female connectors or shunt plugs