

POWER MOS FETs (2)

The Sanyo J-MOS series utilizes Sanyo's own fine fabrication process for power devices to develop an entire series of ultrahigh performance power devices capable of high voltage, high speed and large current operation.

With performance of wide applications for virtually any types of power electronic equipment, the UH Series, AP Series and LD Series offer the most suitable devices to meet specific needs.

In addition to the above we have Small-signal MOS FETs. See other pages.

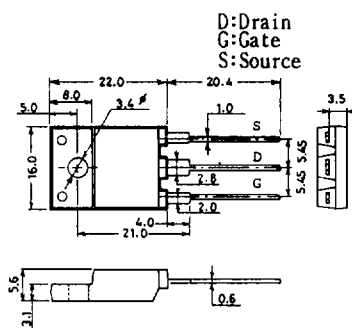
AP Series (Advanced Performance)

VDSS 100V system (*:PD value at Tc=25°C)

※RDS(on):VGS=10V

Type No.	Package	Absolute Maximum Ratings /Ta=25°C					Electrical Characteristics/Ta=25°C			Type No.
		V _{DSS} (V)	V _{GSS} (V)	I _D (A)	I _{DP} (A)	* P _D (W)	V _{GS(off)} (V)	※ R _{DS(on)} typ/max (Ω)	C _{iss} typ (PF)	
2SK1427 2SK1428 2SK1429	TO-220	100	±20	10	40	40	1.5~2.5	0.12/0.16	750	2SK1427
				20	80	60		75m/100m	1200	2SK1428
				30	120	70		40m/55m	2400	2SK1429
2SK1430 2SK1431 2SK1432	TO-220ML			10	40	25		0.12/0.16	750	2SK1430
				15	60	30		75m/100m	1200	2SK1431
				25	100	40		40m/55m	2400	2SK1432
2SK1433 2SK1434	TO-3PB			30	120	60		40m/55m	2400	2SK1433
				60	240	150		23m/35m	4800	2SK1434
2SK1435 2SK1436	TO-3PML			30	120	60		40m/55m	2400	2SK1435
				50	200	80		23m/35m	4800	2SK1436
2SK1437	TO-3PBL			70	280	200		16m/26m	7200	2SK1437

Case Outlines (unit:mm)
SANYO:TO-3PML

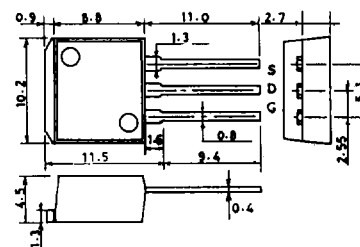


VDSS 200V, 250V system

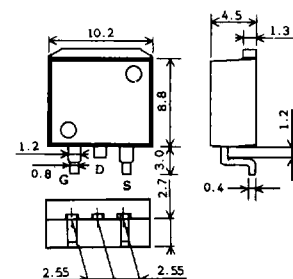
(2SJ type:P channel (-) sign is omitted.)

2SK2160 2SK2161 2SK2378 2SK2379	TO-220ML	200	±20	7 9 13 20	28 36 52 80	25 25 30 40	1.5~2.5	0.35/0.45 0.25/0.35 0.16/0.21 70m/95m	550 700 1100 2400	2SK2160 2SK2161 2SK2378 2SK2379		
2SJ282 2SK1921 2SK2142	TO-220	250	±30	3 4 12	12 16 48	50 50 70	1.5~2.5	1.5/2 0.5/0.7 0.25/0.35	600 600 1250	2SJ282 2SK1921 2SK2142		
2SJ306 2SJ307 2SJ308 2SJ320	TO-220ML			3 6 9 4	12 24 36 16	25 30 40 25		1.5/2 0.75/1 0.35/0.48 1/1.3	600 1250 2700 750	2SJ306 2SJ307 2SJ308 2SJ320		
2SK2010 2SK2011 2SK2012 2SK2108				TO-220ML	4 12 18 6	16 48 72 24		25 30 40 25	0.5/0.7 0.25/0.35 0.12/0.16 0.38/0.5	600 1250 2700 750	2SK2010 2SK2011 2SK2012 2SK2108	
2SK2321					SMP	12		48	70	0.25/0.35	1250	2SK2321
2SK2058					TO-3PB	25		100	120	0.12/0.16	2700	2SK2058

SANYO:SMP(straight type)



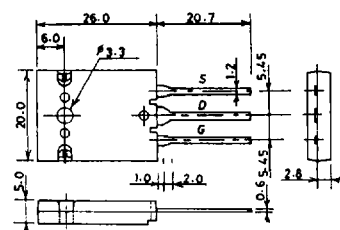
SANYO:SMP(FD forming)



VDSS 450V system

2SK1438 2SK1439 2SK1440 2SK1441 2SK1442	TO-220	450	±30	0.3 3 5 8 12	1.2 12 20 32 48	20 50 60 70 70	2~3	9/12 2/2.6 1/1.4 0.6/0.8 0.47/0.6	90 400 700 1200 1600	2SK1438 2SK1439 2SK1440 2SK1441 2SK1442
2SK1443LS 2SK1444LS 2SK1445LS 2SK1446LS 2SK1447LS	TO-220FI(LS)			1 3 5 7 9	4 12 20 28 36	20 25 30 35 40		3.5/4.5 2.0/2.6 1/1.4 0.6/0.8 0.47/0.6	250 400 700 1200 1600	2SK1443LS 2SK1444LS 2SK1445LS 2SK1446LS 2SK1447LS
2SK1690 2SK1691	SMP			3 5	12 20	50 60		2/2.6 1/1.4	400 700	2SK1690 2SK1691
2SK1448 2SK1449 2SK1450	TO-3PB			8 12 20	32 48 80	100 120 150		0.6/0.8 0.47/0.6 0.24/0.3	1200 1600 3200	2SK1448 2SK1449 2SK1450
2SK1451 2SK1452 2SK1453	TO-3PML			8 10 16	32 40 64	50 60 70		0.6/0.8 0.47/0.6 0.24/0.3	1200 1600 3200	2SK1451 2SK1452 2SK1453
2SK1454	TO-3PBL			30	120	250		0.12/0.16	6400	2SK1454

SANYO:TO-3PBL



VDSS 600V system

2SK1922 2SK1923 2SK1924	TO-220	600	±30	2 4 6	8 16 24	50 60 70	2 ~ 3	3.2/4.3 1.8/2.4 1.1/1.5	400 700 1100	2SK1922 2SK1923 2SK1924
2SK2043LS 2SK2044LS 2SK2045LS	TO-220FI(LS)			2 4 5.5	8 16 22	25 30 35		3.2/4.3 1.8/2.4 1.1/1.5	400 700 1100	2SK2043 2SK2044 2SK2045
2SK1925	TO-3PB			8	32	120		0.9/1.2	1500	2SK1925

Precaution

◎ Take care to prevent device breakage from static electricity because MOSFETs cannot withstand much static electricity.

◎ For samples and shipment contact our Product Planning Dept. of TR division.

These specifications are subject to change without notice.

Next page