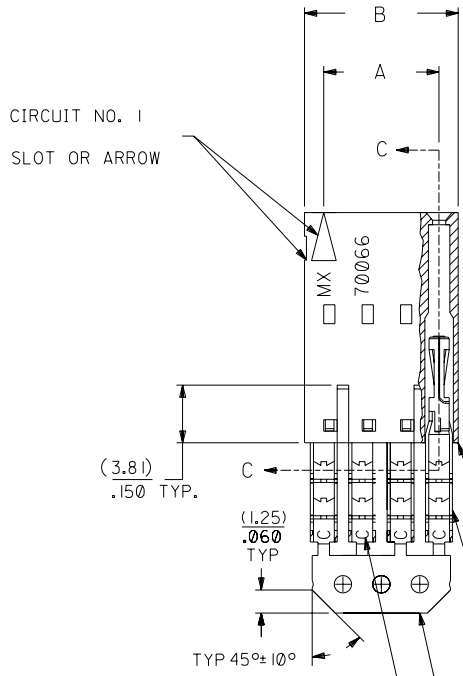
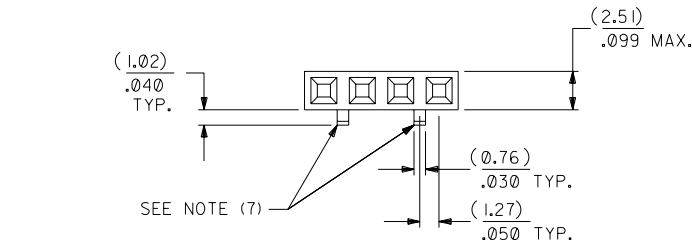


OPTION D

NOTES:

- 1) TO BE USED WITH (28) AWG. STRANDED WIRE WITH (1.35)/.053 DIA. MAX. INSULATION.
- 2) SEE CHART FOR CIRCUIT SIZES.
- 3) STANDARD PACKAGING PER PK-70873-0001. OPTIONAL PACKAGING MAY BE AVAILABLE, REQUEST DWG. PK-70400
- 4) PARTS STACKABLE END TO END ON (2.54)/.100 CENTERS.
- 5) REFER TO PRODUCT SPECIFICATION: PS-70400.
- 6) SEE DWG. SDA-70400-**** (SHT. 5) FOR OPTIONAL HOUSING DETAILS.
- 7) 4 CIRCUIT SHOWN. 3 - 25 CKT'S. HAVE (2) RIBS.
- 8) TO MATE WITH MOLEX PART NO'S.: 70004-****, 70013-****

9) 2 CIRCUIT ASSEMBLIES SUPPLIED AS GROUPED PAIRS.

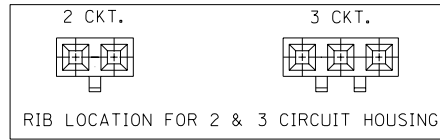


I.D. SLOT CODE TO WIRE GAUGE CHART	
I.D. SLOT CODE	WIRE GAUGE
C	28 AWG.

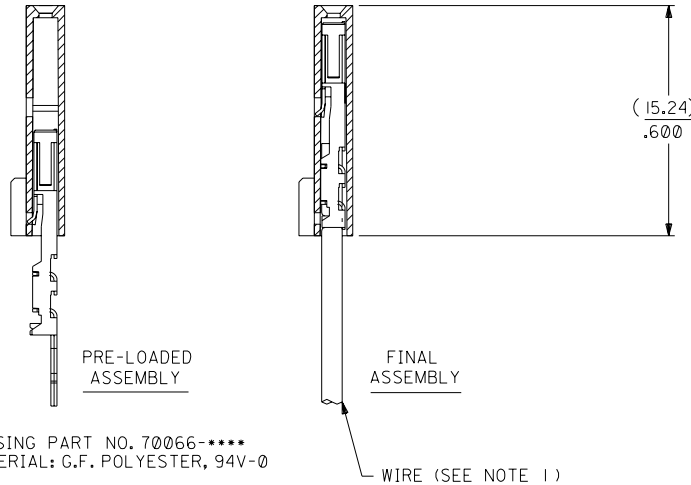
PLATING CODE (STRIPE ON CARRIER STRIP)	
PLATING	COLOR
15 GOLD	YELLOW

15 GOLD - .000015 MIN. GOLD IN SELECT AREA WITH .000075 MIN. TIN IN SELECT AREA OVER .000050 MIN. NICKEL OVER-ALL.

*THE PRIMARY SHIPPING CARTON WILL BE LABELED "COMPLIANT TO ROHS DIRECTIVE 2002/95/EC AND ELV ANNEX II OF DIRECTIVE 2000/53/EC". CARTONS WITHOUT THIS LABEL MAY CONTAIN PRODUCT WITH LEAD.



SECTION C-C



HOUSING PART NO. 70066-****
MATERIAL: G.F. POLYESTER, 94V-0

TERMINAL PART NO. 70028-****
MATERIAL: PHOSPHOR BRONZE
PLATING PER ES-88-***

WIRE (SEE NOTE 1)

CKT. SIZE	A	B	EDP. NO.	ENG. NO.
2	(2.54) .100	(5.05) .199	14-56-3029	A-70400-0946
3	(5.08) .200	(7.59) .299	14-56-3039	A-70400-0947
4	(7.62) .300	(10.13) .399	14-56-3049	A-70400-0948
5	(10.16) .400	(12.67) .499	14-56-3059	A-70400-0949
6	(12.70) .500	(15.21) .599	14-56-3069	A-70400-0950
7	(15.24) .600	(17.75) .699	14-56-3079	A-70400-0951
8	(17.78) .700	(20.29) .799	14-56-3089	A-70400-0952
9	(20.32) .800	(22.83) .899	14-56-3099	A-70400-0953
10	(22.86) .900	(25.37) .999	14-56-3109	A-70400-0954
11	(25.54) 1.000	(27.91) 1.099	14-56-3119	A-70400-0955
12	(27.94) 1.100	(30.45) 1.199	14-56-3129	A-70400-0956
13	(30.48) 1.200	(32.99) 1.299	14-56-3139	A-70400-0957
14	(33.02) 1.300	(35.53) 1.399	14-56-3149	A-70400-0958
15	(35.56) 1.400	(38.07) 1.499	14-56-3159	A-70400-0959
16	(38.01) 1.500	(40.61) 1.599	14-56-3169	A-70400-0960
17	(40.64) 1.600	(43.15) 1.699	14-56-3179	A-70400-0961
18	(43.18) 1.700	(45.69) 1.799	14-56-3189	A-70400-0962
19	(45.72) 1.800	(48.23) 1.899	14-56-3199	A-70400-0963
20	(48.26) 1.900	(50.77) 1.999	14-56-3209	A-70400-0964
21	(50.80) 2.000	(53.31) 2.099	14-56-3219	A-70400-0965
22	(53.34) 2.100	(55.85) 2.199	14-56-3229	A-70400-0966
23	(55.88) 2.200	(58.39) 2.299	14-56-3239	A-70400-0967
24	(58.42) 2.300	(60.93) 2.399	14-56-3249	A-70400-0968
25	(60.96) 2.400	(63.47) 2.499	14-56-3259	A-70400-0969

REV.	DATE	DESCRIPTION	BY	CHK'D.	SCALE
D		REVISED PER ECR NO. U82110 10-17-88 AAB			
E		LEAD FREE UCP2004-1769 RWHITE 04/03/17			
DI		ADD CARRIER CHAMF ECR# UDT1998-0280 05/20/98 LMCGRATH			
LTR.		REVISIONS			

DIMENSIONS SHOWN (METRIC) INCH UNLESS OTHERWISE SPECIFIED TOLERANCES: ANGULAR ± 1/2°		
3 PLACE	INCH	METRIC
± .010	---	---
± .014	± 0.25	---
---	± 0.35	---

MFG. SH. REV.		REVISE ONLY ON CAD SYSTEM	
TITLE ASSEMBLY, SL CONNECTOR (SINGLE ROW- (2.54)/.100 GRID)			
MOLEX INCORPORATED LITSE, ILL. 60532 U.S.A.		SHEET NO. 10/10/84	DATE
PART NO. SDA-70400-0946-0969		DRWG. NO.	
SEE CHART		FILE NAME S70400DX6	
THIS DRAWING CONTAINS INFORMATION THAT IS PROPRIETARY TO MOLEX INC. AND SHOULD NOT BE USED WITHOUT WRITTEN PERMISSION.			