

# 3 • ROW Connectors

PC Card to  
Board or  
Chassis

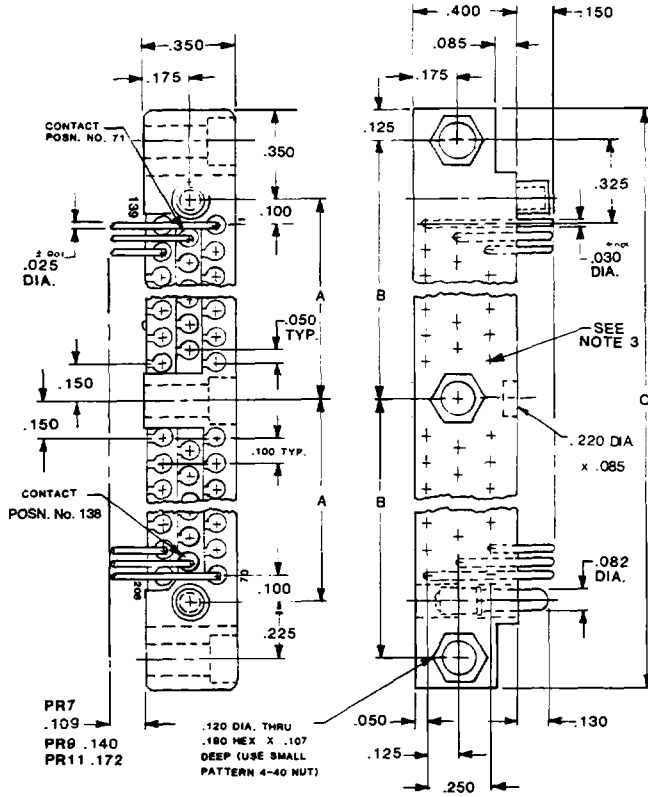
**WG-WG**  
**WG = WRG**

| PLUG                      |   | RECEPTACLE |   | PLUG:       | WRG | 208 | PR7 | SY |
|---------------------------|---|------------|---|-------------|-----|-----|-----|----|
|                           |   |            |   | RECEPTACLE: | WRG | 208 | SAC | SY |
| <b>SERIES</b>             |   |            |   |             |     |     |     |    |
| WG                        | = 3-row, right-angle, plug, mntg. ears. | WG         | = 3-row, straight, receptacle, mntg. ears.        |             |     |     |     |    |
| <b>NUMBER OF CONTACTS</b> |   |            |   |             |     |     |     |    |
| 160,208                   |   | 160,208    |   |             |     |     |     |    |
| <b>TYPE OF CONTACTS</b>   |   |            |   |             |     |     |     |    |
| PR7                       | = Pin, right-angle, dip solder, .109    | SAC        | = Low force socket, straight, solder cup          |             |     |     |     |    |
| PR9                       | = Pin, right-angle, dip solder, .140    | SAD9       | = Low force socket, straight, dip solder, .140    |             |     |     |     |    |
| PR11                      | = Pin, right-angle, dip solder, .172    | SAD11      | = Low force socket, straight, dip solder, .172    |             |     |     |     |    |
|                           |   | SAD15      | = Low force socket, straight, dip solder, .234    |             |     |     |     |    |
|                           |   | SOR7       | = Low force socket, right angle, dip solder, .109 |             |     |     |     |    |
|                           |   | SOR9       | = Low force socket, right angle, dip solder, .140 |             |     |     |     |    |
|                           |   | SOR11      | = Low force socket, right angle, dip solder, .172 |             |     |     |     |    |
| <b>TYPE OF HARDWARE</b>   |   |            |   |             |     |     |     |    |
| SY                        | = Guide set                             | SY         | = Guide set                                       |             |     |     |     |    |

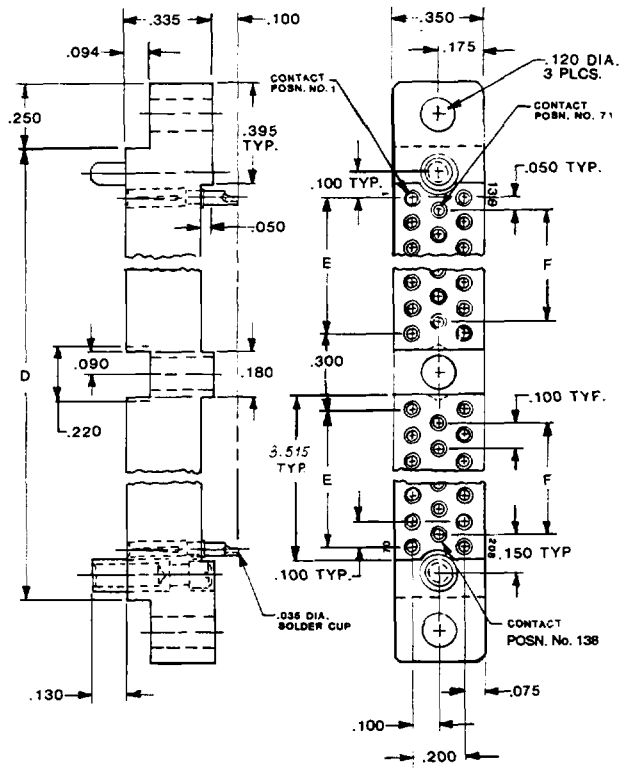
**NOTES**

- 342 • Remove .250-long mounting ears.
- 548 = Include nuts bonded in hex recess in mounting holes. Example: WG208PR7SY548.
- For polarized "D"-shaped guides, add dash and code number to part number (Example:-7). See "Polarization" under next tab for codes.
- For lower force contacts with a nominal engaging force of two ounces per socket contact, substitute the letter "O" for the letter "A". Example: P/N WG208SOD11SY.

2-115



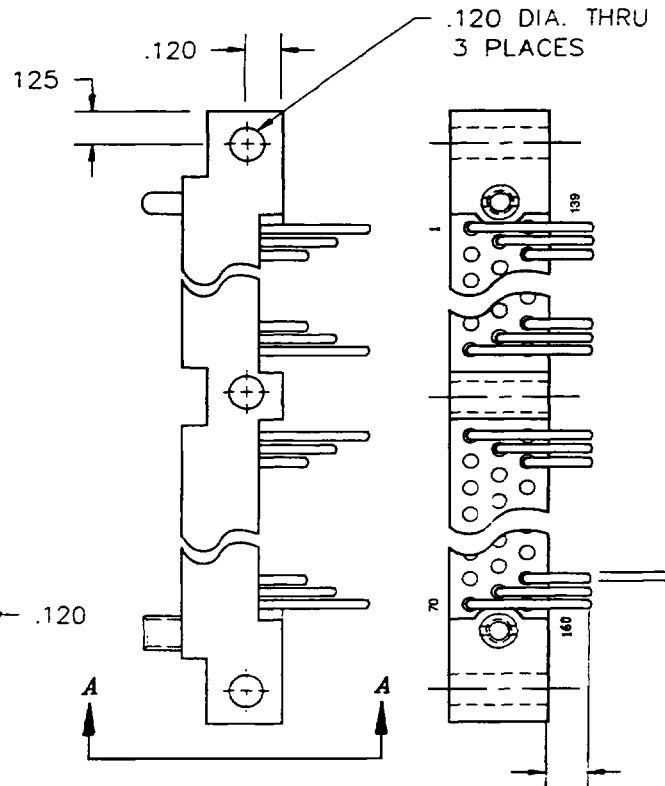
EXAMPLE: WG208PR7SY



EXAMPLE: WG208SACSX

**WG-WG**  
DIMENSIONS

| SIZE | A     | B     | C     | D     | E     | F     |
|------|-------|-------|-------|-------|-------|-------|
| 160  | 2.850 | 3.075 | 6.400 | 5.900 | 2.600 | 2.500 |
| 208  | 3.650 | 3.875 | 8.000 | 7.500 | 3.400 | 3.300 |



2-116

.109 SOR7  
.140 SOR9  
.172 SOR11

WG160SOR11SY-C69