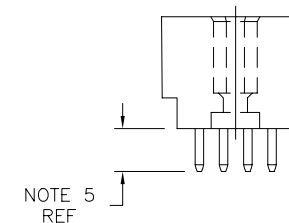
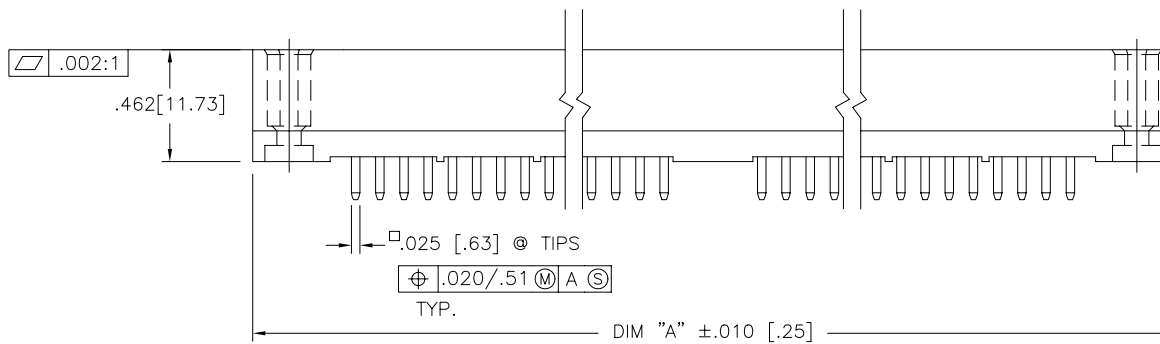
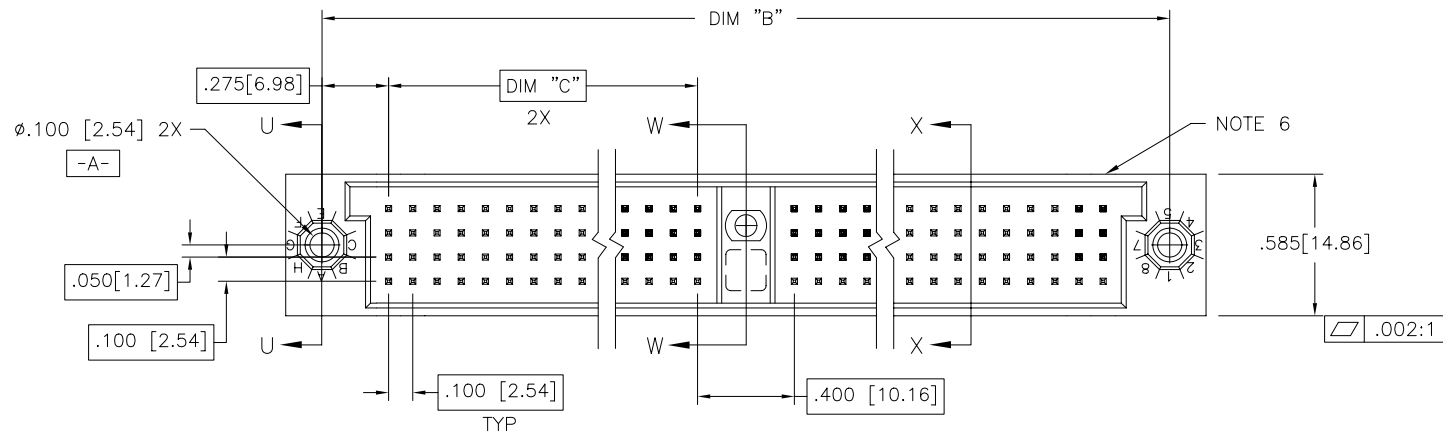


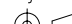



FCIconnect.com

Copyright FCI

PRODUCT NUMBER
SEE NOTE 1



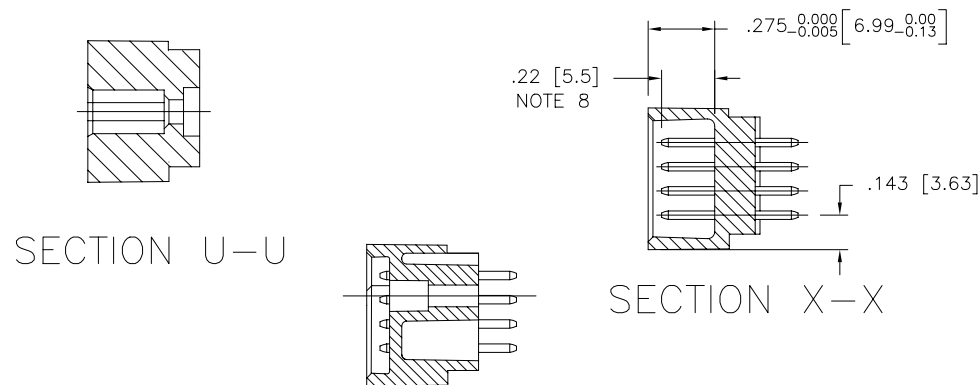
mat'l. code				surface		tolerance		projection		product family			
NOTE 3				ISO 1302 ✓		ISO 406 ISO 1101				HPC			
ltr	ecn no	dr	date	tolerances unless otherwise specified						title			
G	V23425	JM	10/27/92	angles	linear	.XX ±.01/.3					INCH/MM		
H	V40287	PDP	1/20/94			.XXX ±.005/.13							
J	V40941	PDP	6/01/94			.XXXX ±.0020/.051							
K	C80018	EPK	3/31/98	dr	D. SHEAFFER	3/14/91			scale 1:1		sheet 1 of 2		
L	V90018	HTB	1/08/99	engr	S. CLARK	3/14/91					size		
M	V00272	JWS	2/01/00	chr	S. CLARK	3/14/91					50016		
N	M06-0261	AEA	7/08/06	appd	S. CLARK	3/14/91					A3		
sheet				revision		N		N		type			
index				sheet		1		2		Product Customer Drawing			

form: A3

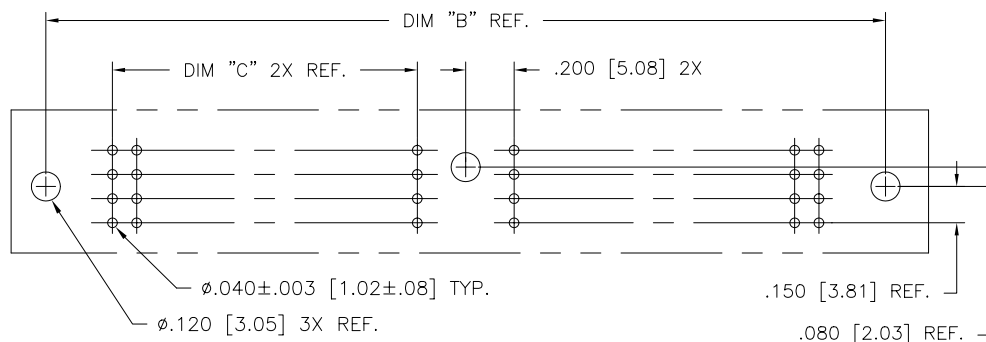
PRODUCT NUMBER	DIM	LENGTH FORMULAS
SEE NOTE 1	DIM "A"	.100/2.54 x NO. OF COLUMNS + 1.05/26.7
	DIM "B"	.100/2.54 x NO. OF COLUMNS + .750/19.05
	DIM "C"	.100/2.54 x NO. OF COLUMNS DIVIDED BY 2 -.100/2.54

NOTES:

- PRODUCT NUMBERING CODE:
50016 - X YYY Z
TAIL LENGTH (NOTE 5)
NO. OF POSITIONS (NOTE 2)
PLATING (NOTE 4)
BASE NUMBER
- PRODUCT NUMBERING CODE FOR
SELECT LOAD/FMLB PART NUMBERS:
50016 - XXXXX
SEQUENCE NUMBER
ALWAYS 'XX'
BASE NUMBER
- THIS PRODUCT IS CONFIGURED IN SIZES OF 20
THRU 150 COLUMNS IN INCREMENTS OF TWO.
i.e.: 20, 22, 24, 26,.....146, 148, 150.
- HOUSING MATERIAL: GLASS AND MINERAL FILLED
HIGH TEMP. THERMOPLASTIC. FLAME RETARDANT PER
UL94V-0. COLOR: BLACK.
PIN MATERIAL: PHOS BRONZE
- PLATING CONTACT AREA OPTIONS:
1 = 30u"/.76u GOLD
3 = 50u"/1.27u GOLD
5 = 30u"/.76u GXT
- TAIL LENGTH OPTIONS:(±.015/38)
A = .177/4.5 G = .250/6.35
C = .533/13.54 J = .120/3.05
D = .733/18.62
- COMPANY NAME, PART NUMBER AND LOT CODE TO
APPEAR ON THIS SURFACE PER BUS-12-108.
- FOR DOCUMENTATION MENU, SEE BUS-01-057.
- REFERENCE 50811 FOR F.M.L.B. AVAILABLE
OPTIONS AND WORKSHEET.



SECTION W-W



RECOMMENDED PCB LAYOUT
(ALL HOLES LOCATED ON .100/2.54 GRID
UNLESS OTHERWISE SPECIFIED)

mat'l. code		surface	tolerance	projection	product family
-		ISO 1302 ✓	ISO 406 ISO 1101	INCH/MM	HPC
ltr	ecn no	dr	date	tolerances unless otherwise specified	title
N				angles linear .XX ±.01/.3 .XXX ±.005/.13 .XXXX ±.0020/.051	4 ROW VERTICAL HEADER W/SOLDER TAIL FIT PINS, 1 G.P.
		dr	D. SHEAFFER	3/14/91	dwg no
		enr	S. CLARK	3/14/91	sheet 2 of 2 size
		chr	S. CLARK	3/14/91	A3
		appd	S. CLARK	3/14/91	type
sheet index	revision sheet				Product Customer Drawing