

VIEW OF WIRE END OF CONNECTOR

NOTES: UNLESS OTHERWISE SPECIFIED

- GENERAL TOLERANCES:
 - ±0.10 ALL TWO PLACE DIMENSIONS
 - ±0.3 ALL ONE PLACE DIMENSIONS
 - ±1.0° ALL ANGULAR DIMENSIONS
- 0.5° MAXIMUM DRAFT ANGLE
- 0.3 MAXIMUM RADIUS PERMISSIBLE ON ALL EDGES AND FILLETS SHOWN AS SHARP
- ALL RADI: 0.8
- WALL THICKNESS 1.3-1.0

DATE LET	REVISIONS	DR	CK	APP
11-18-77	RELEASED COMPLETE			
	AKI-6000 # 86			

NO. ES-EIAB-14A485-AA

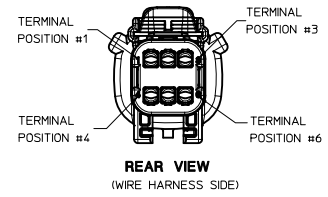
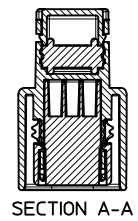
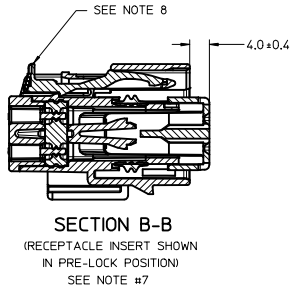
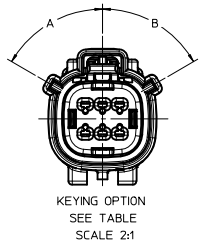
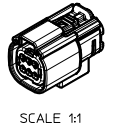
SPIND PRODUCT ENGINEERING

MILLIMETRES ON ORIGINAL FORMAT - 1:1
10 20 30 40 50 60 70 80 90 100 110 120 130 140
DO NOT SCALE ABOVE SCALE FOR REFERENCE ONLY
REF
DRAWN BY: <i>Janice</i>
DATE: <i>11-8-77</i>
CHECKED: <i>CE</i>
SCALE: <i>1/2"</i>
APPROVED CODE: <i>MA</i>

UNLESS OTHERWISE SPECIFIED
 DIMENSIONS ARE IN MILLIMETRES
 MACHINED DIM: 1
 ANGULAR DIM: 1

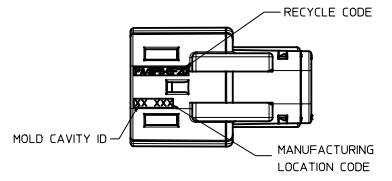
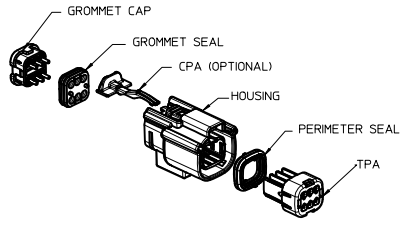
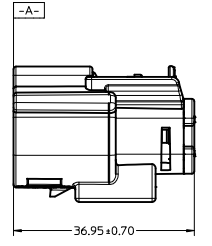
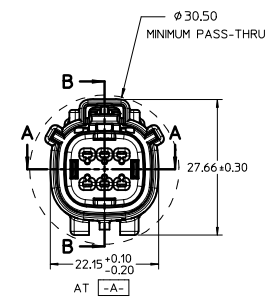
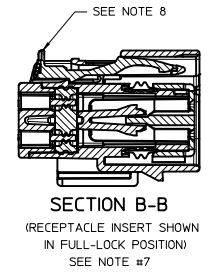
NAME: SPECIFICATION - RETAINER - WIRE
 CONNECTOR SLEEVE
 MATERIAL: *55*
 DATE: *11-8-77*
 NO. ES-EIAB-14A485-AA

ASSEMBLY PART NUMBER	CPA	COLOR	KEYING OPTION	DIMENSIONS (DEGREES)		CAVITY TYPE & STATUS (X = PLUGGED)														
				A	B	1	2	3	4	5	6	7	8	9						
33472-0701	-	BLACK	A	60	60															
33472-0702	-	LT. GRAY	B	60	25															
33472-0703	-	BROWN	C	25	60															
33472-0704	-	GREEN	D	25	25															
33472-0705	YES	BLACK	A	60	60															
33472-0706	YES	LT. GRAY	B	60	25															
33472-0707	YES	BROWN	C	25	60															
33472-0708	YES	GREEN	D	25	25															
33472-0709	-	BLACK	A	60	60															
33472-0710	-	BLACK	A	60	60															
33472-0711	-	BLACK	A	60	60															
33472-0712	-	BLACK	A	60	60															



NOTES: UNLESS OTHERWISE SPECIFIED

- MATERIAL: SPS/NYLON BLEND, 20% GLASS FILLED.
- SHALL CONFORM TO PRODUCT SPECIFICATION PS-33472-000.
- SHALL CONFORM TO (BULK) PACKAGING SPECIFICATION PK-31300-635. SHALL CONFORM TO (CELL PACK) PACKAGING SPECIFICATION PK-31300-903 OR PK-30907-895
- SYSTEM TO BE USED WITH WIRE WITHIN DIAMETER RANGE OF 1.5mm TO 2.5mm.
- FOR RECEPTACLE TERMINALS TO BE USED WITH THIS ASSEMBLY, SEE DRAWING SD-33012-002.
- DESIGNED TO MATE WITH THE BLADE HOUSING ASSEMBLY SPECIFIED IN MOLEX CHARTED DRAWING SD-33482-061 OR DEVICE CONNECTION AS SPECIFIED IN DRAWING 150-S-006-2-202.
- ASSEMBLY SHIPPED WITH RECEPTACLE INSERT IN PRE-LOCK POSITION (SEE SECTION B-B PRE-LOCK). UPON FULL TERMINAL ASSEMBLY, EACH RECEPTACLE INSERT MUST BE SNAPPED INTO ITS FINAL-LOCK POSITION.
- OPTIONAL CPA SHOWN IN ALL VIEWS. SEE TABLE FOR SPECIFIC ASSEMBLY OPTION AND NUMBER. CPA MUST BE INSERTED TO THE PRE-LOCK POSITION, AS SHOWN IN SECTION B-B. WHEN SEATED CORRECTLY, CPA DOES NOT MOVE FREELY. ENGAGEMENT FORCE TO MOVE CPA FROM PRE-LOCK TO FINAL LOCK POSITION, WHEN UNMATED: 40 N MIN. DISENGAGEMENT FORCE TO MOVE CPA FROM FINAL LOCK TO PRE-LOCK POSITION: 3N MIN.
- PACKAGING: IN THE EVENT THAT INSERT IS FOUND IN THE SEATED (FINAL LOCK) POSITION, REFER TO MOLEX SPECIFICATION PS-34646-001, AVAILABLE AT WWW.MOLEX.COM.
- ASSEMBLY CONFORMS TO SAE/USCAR-2 REV 4 WITH THE FOLLOWING EXCEPTIONS: TPA REMOVAL FROM FINAL LOCK TO PRE-LOCK POSITION SHALL NOT EXCEED 130 NEWTONS. TERMINAL INSERTION FORCE FOR WIRE SIZE ABOVE 2.5mm NOT EXCEEDING 2.69mm SHALL NOT EXCEED 40 NEWTONS.



ENTER DESCRIPTION IEC NO. UAU2010-1264 DRAWN/GRF/FF/THS 20/00/01/13 CHYD/GRF/FF/THS 20/00/01/14 APPR:VKOSHY 20/00/01/15	QUALITY SYMBOLS ▽=0 ▽=0	GENERAL TOLERANCES (UNLESS SPECIFIED)		DIMENSION STYLE MM ONLY	SCALE 2:1	DESIGN UNITS METRIC	THIRD ANGLE PROJECTION	
		4 PLACES ± mm ± INCH	3 PLACES ± --- ± ---	DRAWN BY _____ DATE _____	TITLE MX150 RECEPT. ASSEMBLY 2 ROW X 3.6 WAY SEALED, WITH CLIP-SLOT			
		2 PLACES ± 0.10 ± ---	1 PLACE ± 0.3 ± ---	CHECKED BY _____ DATE _____	MOLEX INCORPORATED			
		ANGULAR ± 3 °		APPROVED BY _____ DATE _____	MATERIAL NO. SEE CHART	DOCUMENT NO. SD-33472-071	SHEET NO. 1 OF 1	
DRAFT WHERE APPLICABLE MUST REMAIN WITHIN DIMENSIONS		THIS DRAWING CONTAINS INFORMATION THAT IS PROPRIETARY TO MOLEX INCORPORATED AND SHOULD NOT BE USED WITHOUT WRITTEN PERMISSION						