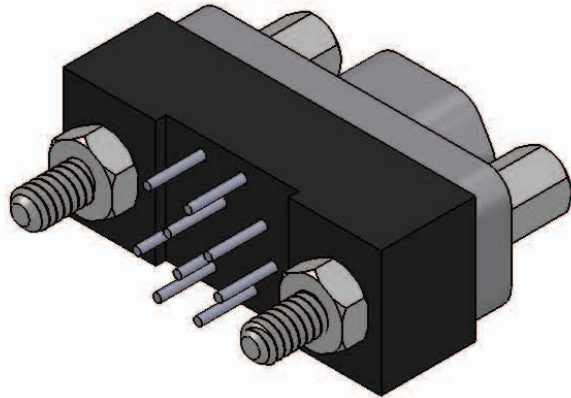
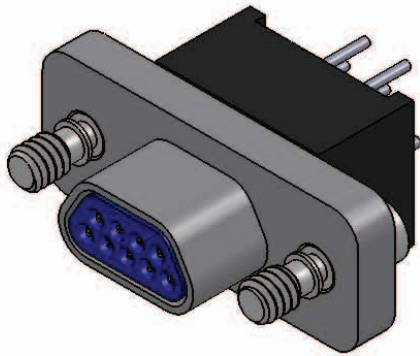


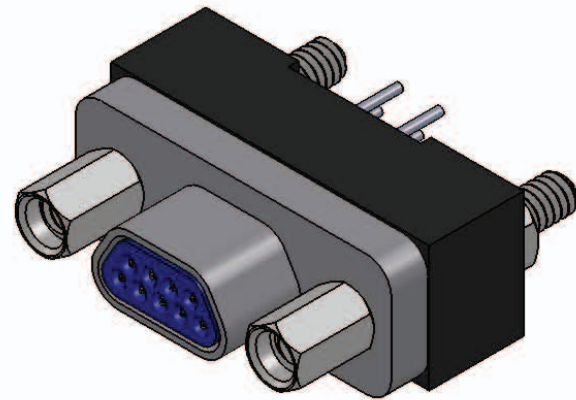
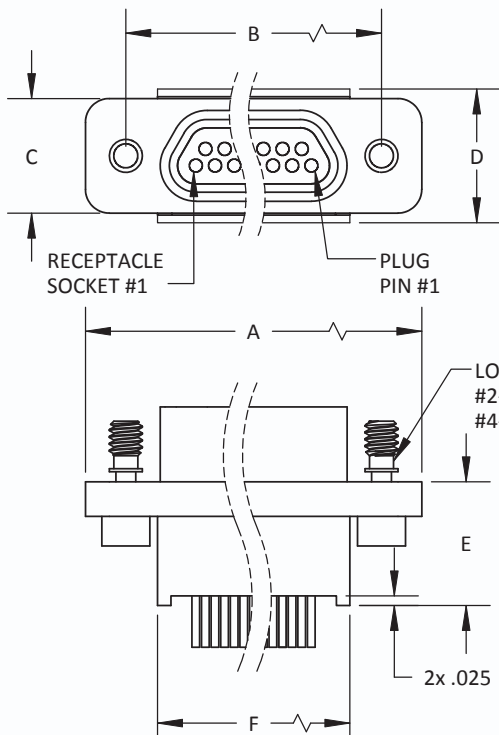
NO. OF CONTACTS	A MAX	B BSC	C MAX	D MAX	E MAX	F MAX JACKSCREW BODY STYLE #1 ONLY
9	.785	.565	.308	.310	.330	.400
15	.935	.715	.308	.310	.330	.550
21	1.085	.865	.308	.310	.330	.700
25	1.185	.965	.308	.310	.330	.800
31	1.335	1.115	.308	.310	.330	.950
37	1.485	1.265	.308	.310	.330	1.100
51	1.435	1.215	.351	.400	.345	1.045
69	1.735	1.515	.351	.400	.455	1.333
100	2.170	1.800	.394	.510	.400	1.550



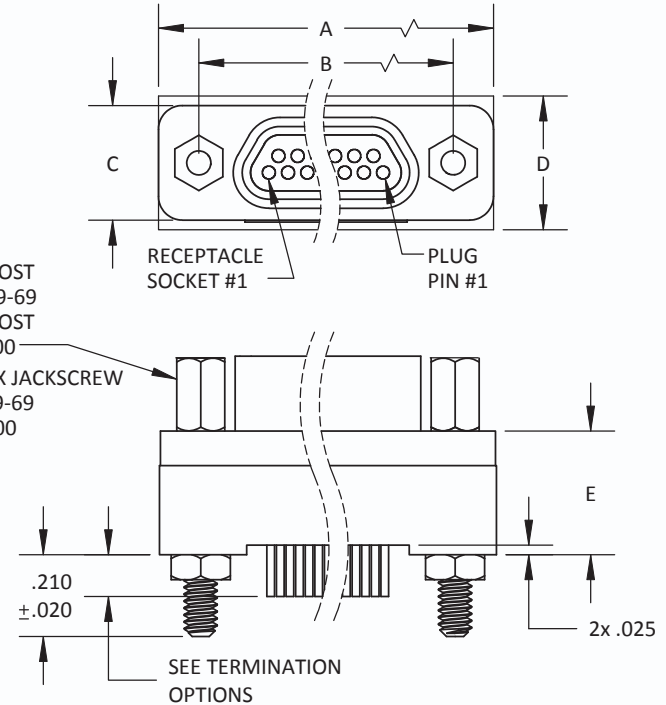
BACK VIEW

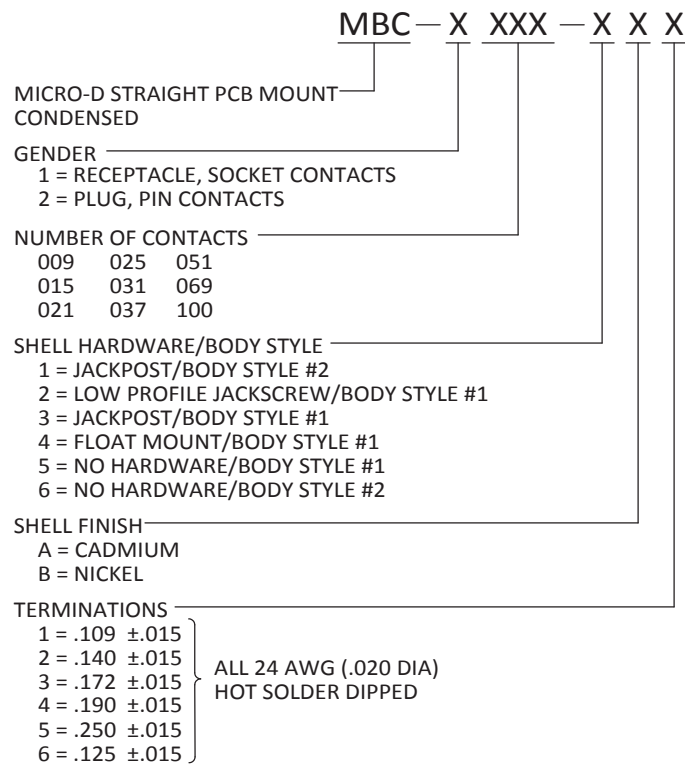


BODY STYLE #1



BODY STYLE #2





MATERIALS AND FINISHES ARE IAW MIL-DTL-83513
FOR DETAILS SEE MIL SPEC OR WWW.CRISTEK.COM

1. MATERIALS:

SHELL - ALUMINUM ALLOY
INSULATOR/BACKSHELL - GLASS FILLED THERMOPLASTIC
PIN/SOCKET CONTACT - COPPER ALLOY
INTERFACIAL SEAL - FLUOROSILICONE BLEND

2. FINISH:

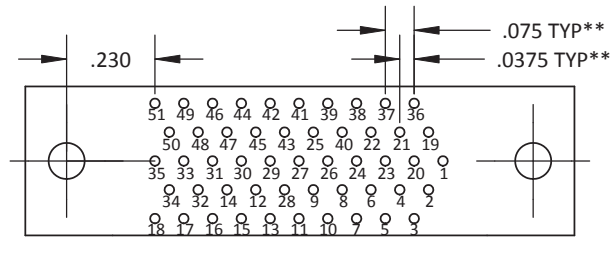
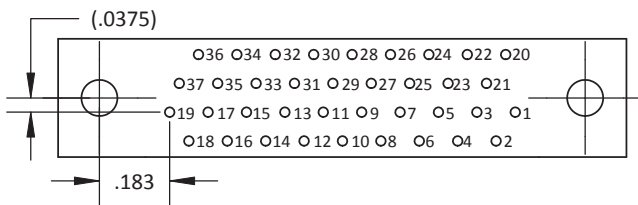
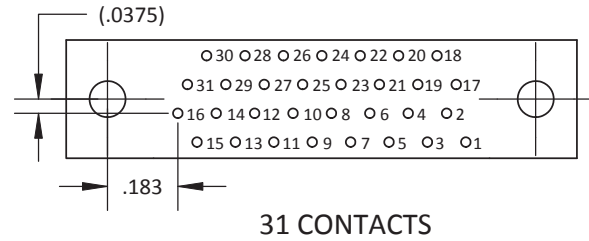
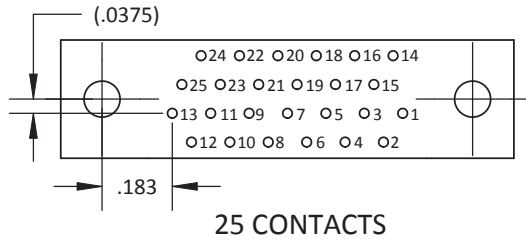
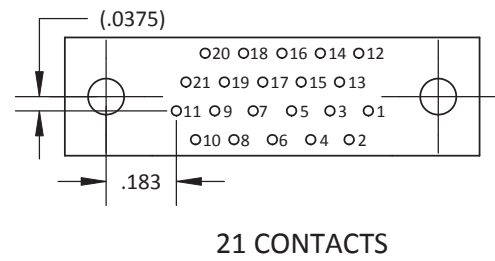
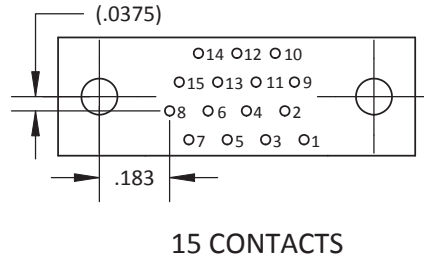
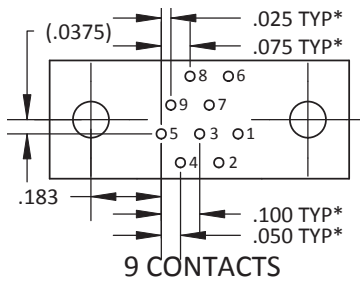
SHELL - ELECTROLESS NICKEL OR CADMIUM
OVER ELECTROLESS NICKEL
PIN/SOCKET CONTACT - GOLD OVER NICKEL

3. SPECIFICATIONS:

CURRENT RATING ----- 3 AMPS MAX
TEMPERATURE RATING ----- -55° C TO +125° C
INSULATION RESISTANCE ----- 5000 MEGOHMS MIN
DWV AT SEA LEVEL ----- 600 VAC
DWV AT 70,000 FT ALTITUDE --- 150 VAC
CONTACT RESISTANCE ----- 24 AWG = 25 MILLIOHMS MAX.
CONTACT RETENTION ----- 5 lb MINIMUM AXIAL LOAD
ENGAGEMENT FORCE ----- 6 oz MAX
SEPARATION FORCE ----- 0.5 oz MIN

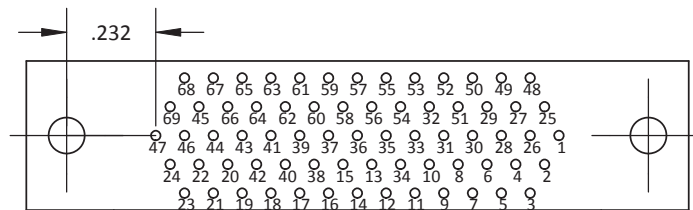
4. ADDITIONAL INFORMATION:

DESIGN AND PERFORMANCE IN GENERAL
ACCORDANCE WITH M83513 WHERE APPLICABLE.
CONTACT CRISTEK FOR OTHER CONFIGURATIONS.

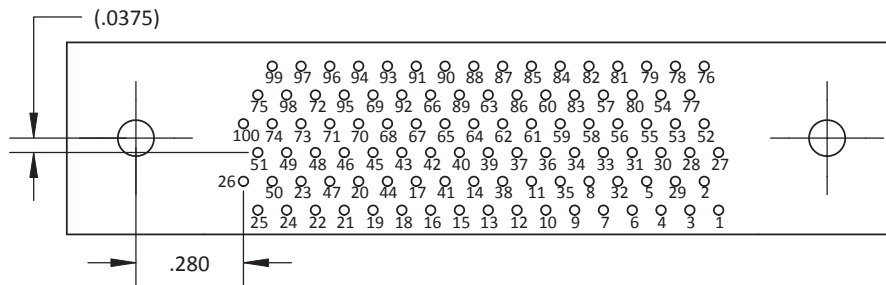


37 CONTACTS

51 CONTACTS



69 CONTACTS

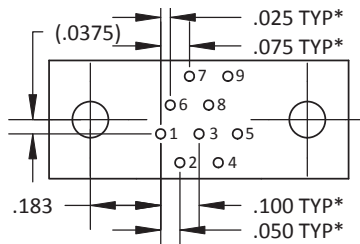


100 CONTACTS

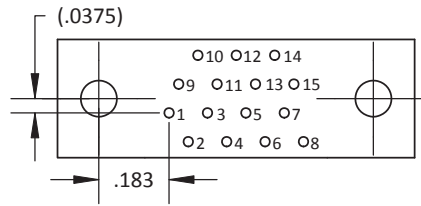
MBC PLUG PCB LAYOUTS

* SIZES 9-37: 0.100 X 0.075 GRID PATTERN OFFSET BY 0.050

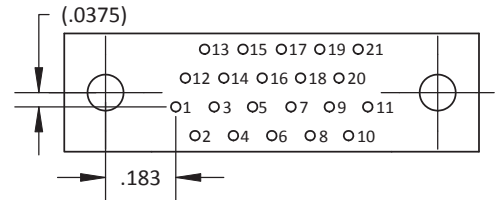
** SIZES 51-100: 0.075 X 0.075 GRID PATTERN OFFSET BY 0.0375



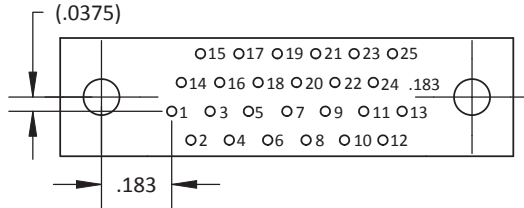
9 CONTACTS



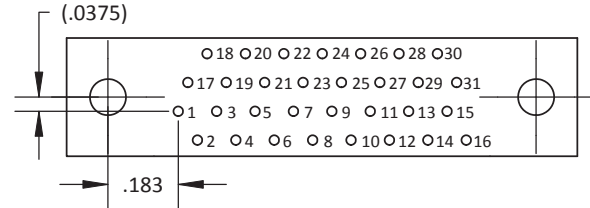
15 CONTACTS



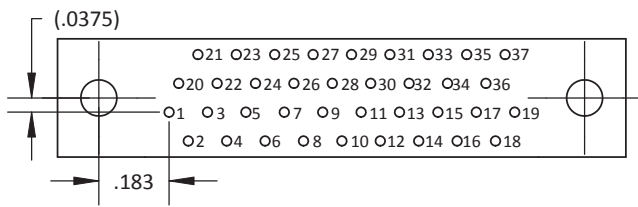
21 CONTACTS



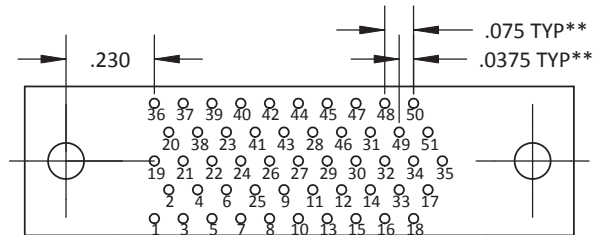
25 CONTACTS



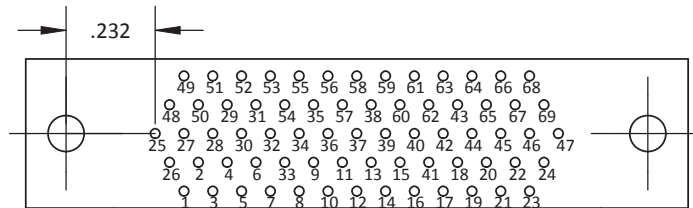
31 CONTACTS



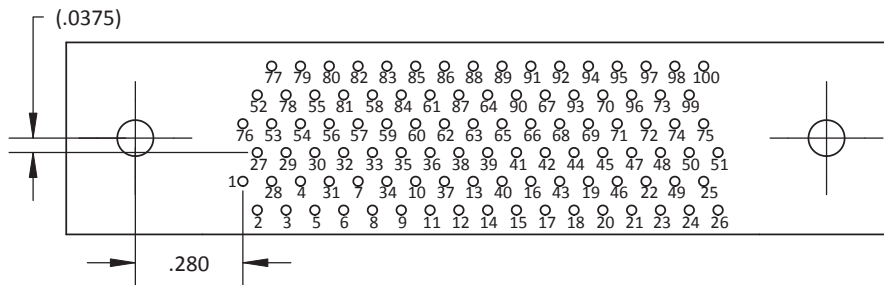
37 CONTACTS



51 CONTACTS



69 CONTACTS



100 CONTACTS

MBC RECEPTACLE PCB LAYOUTS

* SIZES 9-37: 0.100 X 0.075 GRID PATTERN OFFSET BY 0.050

** SIZES 51-100: 0.075 X 0.075 GRID PATTERN OFFSET BY 0.0375