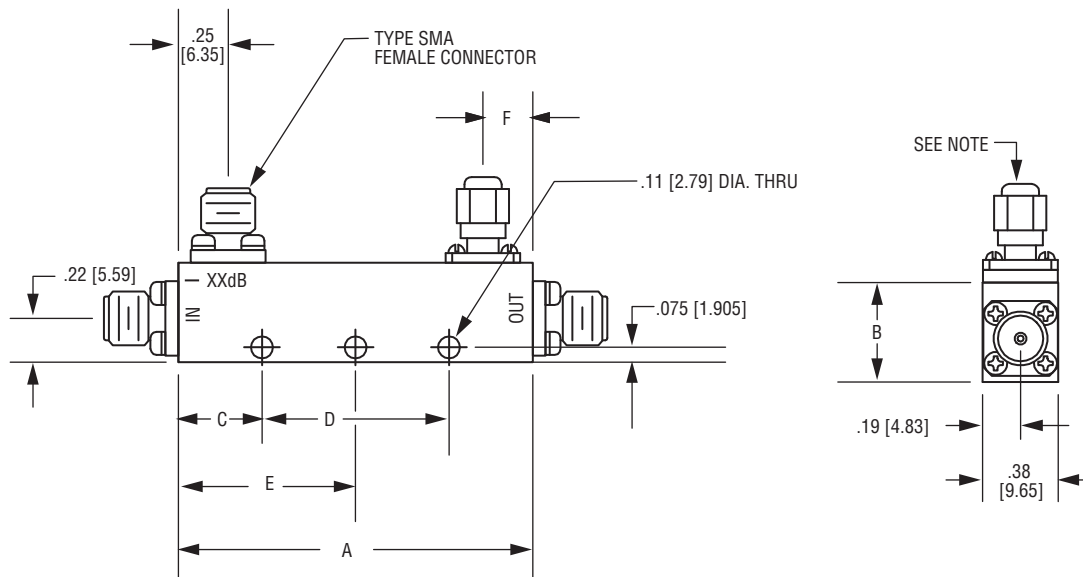


MEDIUM POWER 50 WATT UNIDIRECTIONAL COUPLERS

FREQ. (GHz)	MODEL NUMBER	COUPLING (dB)	FREQ. FLATNESS (±dB)	INSERTION LOSS		DIRECTIVITY (dB, Typ.)	VSWR (Max.)		POWER (Watts, Max.)			OUTLINE
				(dB, Max.)			PRI. LINE	SEC. LINE	AVG. FORWARD	AVG. REVERSE	PEAK (kW)	
				COUPLED	TRUE							
0.5-1	CD-501-102-10S	10 ±1.25	0.75	0.2	0.8	25	1.1:1	1.1:1	50	5	3	1
	CD-501-102-20S	20 ±1.25	0.75	0.15	0.2	25	1.1:1	1.1:1	50	50	3	1
	CD-501-102-30S	30 ±1.25	0.75	0.15	0.2	25	1.1:1	1.1:1	50	50	3	1
0.5-2	CD-501-202-10S	10 ±1	0.75	0.35	0.9	20	1.2:1	1.2:1	50	5	1	8
	CD-501-202-20S	20 ±1	0.75	0.35	0.4	20	1.2:1	1.2:1	50	50	3	9
	CD-501-202-30S	30 ±1	0.8	0.4	0.4	20	1.2:1	1.2:1	50	50	3	10
1-2	CD-102-202-10S	10 ±1.25	0.75	0.2	0.8	25	1.1:1	1.1:1	50	5	3	2
	CD-102-202-20S	20 ±1.25	0.75	0.15	0.2	25	1.1:1	1.1:1	50	50	3	2
	CD-102-202-30S	30 ±1.25	0.75	0.15	0.2	25	1.1:1	1.1:1	50	50	3	2
1-4	CD-102-402-10S	10 ±1	0.5	0.35	0.9	20	1.2:1	1.2:1	50	5	3	7
	CD-102-402-20S	20 ±1	0.5	0.35	0.45	20	1.2:1	1.2:1	50	50	3	7
	CD-102-402-30S	30 ±1	0.5	0.4	0.4	20	1.2:1	1.2:1	50	50	3	7
1-10	CD-102-103-10S	10 ±1.5	0.8	0.6	0.9	15	1.5:1	1.5:1	50	50	1	7
	CD-102-103-20S	20 ±1.5	0.8	0.5	0.75	15	1.5:1	1.5:1	50	50	1	7
	CD-102-103-30S	30 ±1.5	0.5	0.6	0.6	15	1.5:1	1.5:1	50	50	1	7
2-4	CD-202-402-10S	10 ±1.25	0.75	0.2	0.8	22	1.15:1	1.15:1	50	5	3	3
	CD-202-402-20S	20 ±1.25	0.75	0.15	0.2	22	1.15:1	1.15:1	50	50	3	3
	CD-202-402-30S	30 ±1.25	0.75	0.15	0.2	22	1.15:1	1.15:1	50	50	3	3
2-8	CD-202-802-10S	10 ±1	0.3	0.35	1	20	1.25:1	1.25:1	50	5	3	11
	CD-202-802-20S	20 ±1	0.4	0.4	0.45	20	1.25:1	1.25:1	50	50	3	12
	CD-202-802-30S	30 ±1	0.4	0.4	0.4	20	1.25:1	1.25:1	50	50	3	12
2-18	CD-202-183-10S	10 ±1	0.5	0.8	1.3	12	1.4:1	1.5:1	30	30	1	14
	CD-202-183-20S	20 ±1	0.5	0.8	0.9	12	1.4:1	1.5:1	30	30	1	15
2.6-5.2	CD-262-522-10S	10 ±1.25	0.75	0.2	0.8	20	1.25:1	1.25:1	50	5	3	4
	CD-262-522-20S	20 ±1.25	0.75	0.25	0.2	20	1.25:1	1.25:1	50	50	3	4
	CD-262-522-30S	30 ±1.25	0.75	0.25	0.2	20	1.25:1	1.25:1	50	50	3	4
4-8	CD-402-802-10S	10 ±1.25	0.75	0.25	0.9	20	1.25:1	1.25:1	50	5	3	4
	CD-402-802-20S	20 ±1.25	0.75	0.25	0.3	20	1.25:1	1.25:1	50	50	3	4
	CD-402-802-30S	30 ±1.25	0.75	0.25	0.25	20	1.25:1	1.25:1	50	50	3	4
6-18	CD-602-183-20S	20 ±1.25	0.6	0.6	0.6	15	1.35:1	1.4:1	30	30	1	13
7-12.4	CD-702-1242-6S	6 ±1	0.5	0.3	2	17	1.3:1	1.3:1	50	5	3	5
	CD-702-1242-10S	10 ±1	0.5	0.3	1	17	1.3:1	1.3:1	50	5	3	5
	CD-702-1242-20S	20 ±1	0.5	0.3	0.35	17	1.3:1	1.3:1	50	50	3	5
	CD-702-1242-30S	30 ±1	0.5	0.3	0.3	17	1.3:1	1.3:1	50	50	3	5
7.5-16	CD-752-163-10S	10 ±1.25	0.75	0.6	1.2	15	1.35:1	1.35:1	50	5	2	6
	CD-752-163-20S	20 ±1.25	0.75	0.6	0.55	15	1.35:1	1.35:1	50	50	2	6
	CD-752-163-30S	30 ±1.25	0.75	0.6	0.5	15	1.35:1	1.35:1	50	50	2	6
12.4-18	CD-1242-183-10S	10 ±1	0.5	0.6	1.2	12	1.35:1	1.35:1	50	5	1	6
	CD-1242-183-20S	20 ±1	0.5	0.5	0.55	15	1.35:1	1.35:1	50	50	1	6
	CD-1242-183-30S	30 ±1	0.5	0.5	0.5	15	1.35:1	1.35:1	50	50	1	6

See outline drawings on page 33.

MEDIUM POWER 50 WATT UNIDIRECTIONAL COUPLER OUTLINE DRAWING



NOTE: External terminations only used on outlines 5, 6, 7, 14 and 15. All other terminations are internal.

OUTLINE	DIMENSION						
	A	B	C	D	E	F	
1	3.10 [78.74]	0.50 [12.70]	0.80 [20.32]	1.50 [38.10]	-	-	
2	1.78 [45.21]	0.50 [12.70]	0.420 [10.67]	0.94 [23.88]	-	-	
3	1.16 [29.46]	0.50 [12.70]	0.41 [10.41]	0.34 [8.64]	-	-	
4	1.00 [25.40]	0.50 [12.70]	-	-	0.50 [12.70]	-	
5	1.10 [27.94]	0.70 [17.78]	0.30 [7.62]	0.50 [12.70]	-	0.35 [8.89]	
6	1.00 [25.40]	0.60 [15.24]	-	-	0.50 [12.70]	0.23 [5.72]	
7	2.11 [53.59]	0.61 [15.49]	-	-	1.06 [26.92]	0.20 [5.08]	
8	3.60 [91.44]	0.50 [12.70]	0.50 [12.70]	2.60 [66.04]	-	0.25 [6.35]	
9	3.60 [91.44]	0.60 [15.24]	0.50 [12.70]	2.60 [66.04]	-	0.25 [6.35]	
10	3.70 [93.98]	0.70 [17.78]	0.43 [10.92]	0.50 [12.70]	-	0.25 [6.35]	
11	1.78 [45.21]	0.68 [17.27]	0.45 [11.43]	0.875 [22.225]	-	0.25 [6.35]	
12	1.88 [47.75]	0.60 [15.24]	0.44 [11.18]	1.00 [25.40]	-	0.25 [6.35]	
13	1.00 [25.40]	0.50 [12.70]	-	-	0.50 [12.70]	0.225 [5.715]	
14	2.10 [53.34]	0.70 [17.78]	0.55 [13.97]	1.00 [25.40]	-	0.25 [6.35]	
15	2.09 [53.09]	0.70 [17.78]	0.55 [13.97]	1.00 [25.40]	-	0.25 [6.35]	

NOTE: DIMENSIONS SHOWN IN BRACKETS [] ARE IN MILLIMETERS.