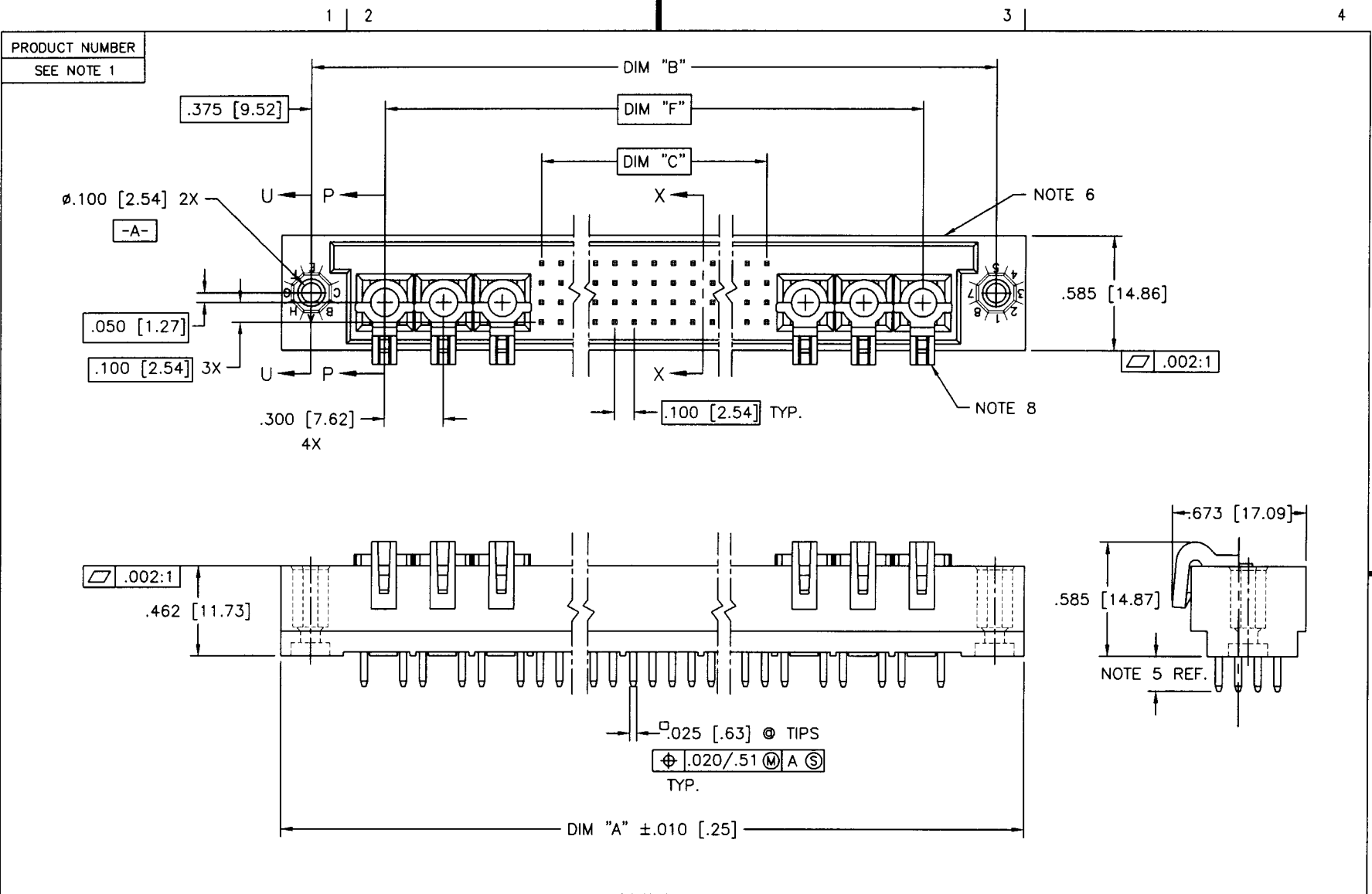


Tous droits strictement réservés. Reproduction ou communication à des tiers interdite sous quelque forme que ce soit sans autorisation écrite du propriétaire. Propriété de c FCI. Droits de reproduction FCI

All rights strictly reserved. Reproduction or issue to third parties in any form whatever is not permitted without written authority from the proprietor. Property of FCI. Copyright FCI



mat'l. code NOTE 3			tolerances unless otherwise specified			CUSTOMER COPY		Electronics www.fciconnect.com	
ltr	ecn no	dr	date	linear	.XX±.01/.X±.3	projection		title	
A	V22185	RDS	5/11/92		.XXX±.005/.XX±.13			4 ROW VERTICAL HEADER SOLDER TAIL, 0 G.P., 6 P.P.	
B	V40262	PDP	1/14/94		.XXX±.0020/.XX±.051	INCH/MM		product family HPC	
C	V41237	GAH	8/17/94	angles	0° ±2'	scale		size dwg no	
D	V91069	HTB	5/17/99	dr	D. SHEAFFER 5/4/92	1:1		A 50538	
E	V00274	JWS	2/2/00	enfr	S. CLARK 5/11/92			code 213	
				chr	S. CLARK 5/11/92			sheet 1 of 2	
				appd	S. CLARK 5/11/92				
sheet index	revision sheet	E	E					cage code 22526	
		1	2						

ACAD

PDM: Rev:E

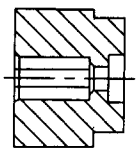
STATUS: Released

Printed: Mar 04, 2005

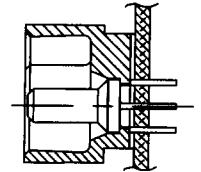
Tous droits strictement reserves. Reproduction ou communication a des tiers interdite sous quelque forme que ce soit sans autorisation écrite du propriétaire. Propriete de c FCI. Droits de reproduction FCI.

All rights strictly reserved. Reproduction or issue to third parties in any form whatever is not permitted without written authority from the proprietor. Property of FCI. Copyright FCI.

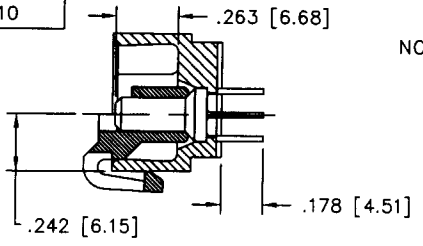
PRODUCT NUMBER	DIM.	LENGTH FORMULAS
SEE NOTE 1	DIM "A"	.100/2.54 x NO. OF COLUMNS +2.55/64.8
	DIM "B"	.100/2.54 x NO. OF COLUMNS +2.250/57.15
	DIM "C"	.100/2.54 x NO. OF COLUMNS - .100/2.54
	DIM "F"	.100/2.54 x NO. OF COLUMNS +1.500/38.10



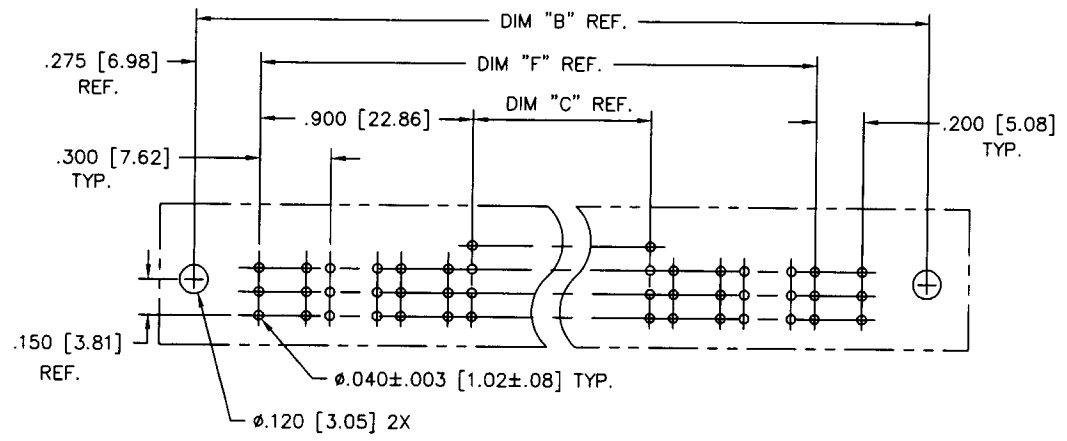
SECTION U-U



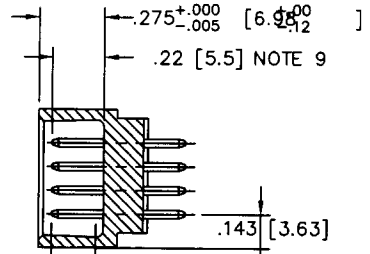
DETAIL P
(INSTALLED IN
PCB, NOTE 8)



SECTION P-P
(W/LOCATOR,
SEE DETAIL P)



RECOMMENDED PCB LAYOUT
(ALL HOLES LOCATED ON .100/2.54 GRID
UNLESS OTHERWISE SPECIFIED)



SECTION X-X
CONTACT AREA

NOTES:

- PRODUCT NUMBERING CODE:
50538 - X YYY Z
X: TAIL LENGTH (NOTE 5)
YYY: NO. OF POSITIONS (NOTE 2)
Z: PLATING (NOTE 4)
BASE NUMBER
- PRODUCT NUMBERING CODE FOR SELECT LOAD PART NUMBERS:
50538 - XYYYY
X: SEQUENCE NUMBER
YYYY: ALWAYS 'XX'
BASE NUMBER
- THIS PRODUCT IS CONFIGURED IN SIZES OF 6 THRU 80 COLUMNS IN INCREMENTS OF ONE. i.e.: 6,7,8,9,.....78,79,80.
- HOUSING MATERIAL: GLASS AND MINERAL FILLED HIGH TEMP. THERMOPLASTIC. FLAME RETARDANT PER UL94V-0. COLOR: BLACK. PIN MATERIAL: PHOS BRONZE
- PLATING CONTACT AREA OPTIONS:
A = 50u" Ni UNDER ALL WITH 30u" Au ON CONTACT AREA, SnPb ON PCB INTERFACE AND Au FLASH ON ALL OTHER AREAS.
- TAIL LENGTH OPTIONS:(±.015/.38)
A = .177/4.5
J = .120/3.05
- MANUFACTURE'S NAME, PART NUMBER AND LOT CODE TO APPEAR ON THIS SURFACE PER BUS-12-108.
- FOR DOCUMENTATION MENU, SEE BUS-01-057.
- POWER PIN LOCATOR (REF. 50234) TO BE REMOVED AFTER SOLDERING.
- REFERENCE 50801 FOR F.M.L.B. OPTIONS AND WORKSHEET.

mat'l. code		tolerances unless otherwise specified		CUSTOMER COPY		 www.fciconnect.com	
ltr	ecr no	dr	date	linear	projection	title	
E				.XX±.01/.X±.3	 INCH/MM	4 ROW VERTICAL HEADER	
				.XXX±.005/.XX±.13		SOLDER TAIL, 0 G.P., 6 P.P.	
				.XXX±.0020/.XXX±.051	 1:1	product family	code
				angles 0° ±2°		HPC	213
				dr D. SHEAFFER 5/4/92	size	dwg no	sheet
				enr S. CLARK 5/11/92	A	50538	2 of
				chr S. CLARK 5/11/92			
				appd S. CLARK 5/11/92			
sheet index	revision sheet					cage code	
						22526	

ACAD

PDM: Rev:E

STATUS: Released

Printed: Mar 04, 2000