

ADSL LINE TRANSFORMER SURFACE MOUNT MAGNETICS

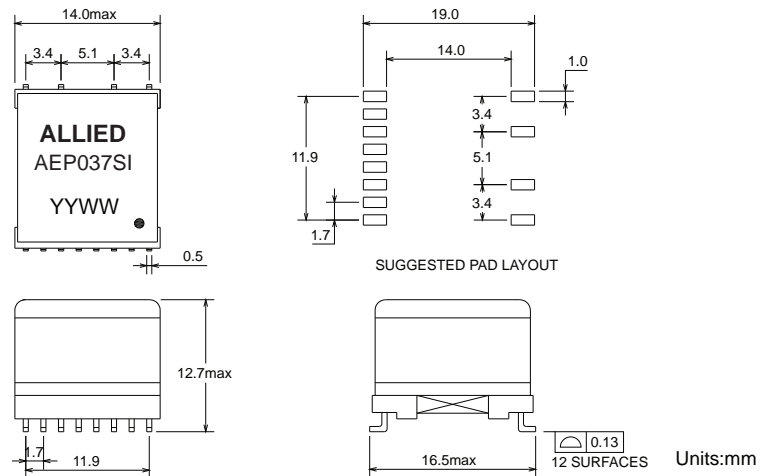
- EN60950 Basic Insulation compliant 250Vrms
- SMD compact foot print design
- Industrial operating temp: -40°C to +85°C

Electrical Specifications @25°C

Part Number	Turns Ratio (10KHz,0.1V)		OCL (10KHz,0.1V)	LL (100KHz,0.1V)		
	AEP037SI	16-9:1-4 (short 11-14,2-3)	16-9:5-8 (short 11-14,6-7)	16-9 (short 11-14)	16-9 (short 11-14,1-2-3-4-5-6-7-8)	1-4 (short 2-3,16-14-11-9,5-6-7-8)
1:1 ±2%		2.5:1 ±2%	1.5mH ±8%	10uH max	10uH max	1.0uH max
Continue						
DCR			THD (30KHz,3.16Vrms)	LB (35KHz~650KHz)	Hi-Pot VAC (1mA/1s)	
16-9 (short 11-14)		1-4 (short 2-3)	5-8 (short 6-7)	-85dB max	55dB min	1875
	2.05Ω ±20%	3.15Ω ±20%	0.425Ω ±25%			

All specifications subject to change without notice.

MECHANICAL



Units:mm
Unless otherwise specified all tolerances are: ±0.25 in mm

SCHEMATICS

