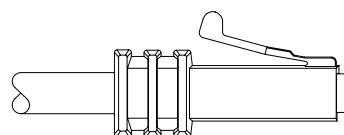
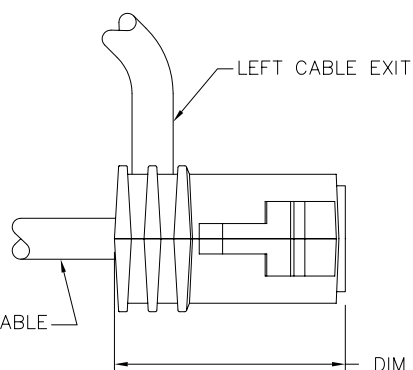
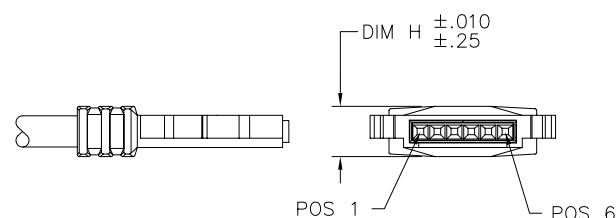
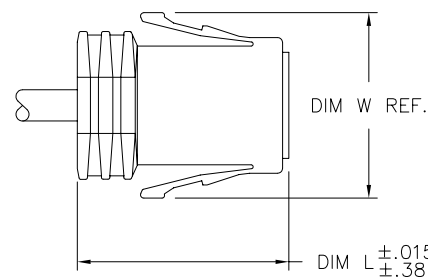
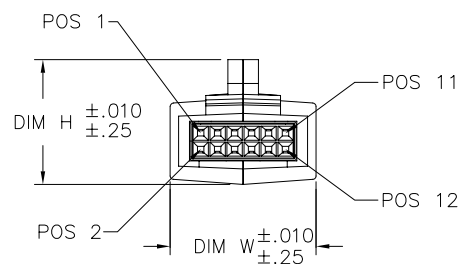


PRODUCT NO.
SEE SHT. 2

SIZE	DIM H	DIM L	DIM W
1 X 4	.300/7.62	1.291/32.79	_____
1 X 6	.300/7.62	1.291/32.79	_____
1 X 8	.300/7.62	1.291/32.79	_____
1 X 10	.300/7.62	1.291/32.79	_____
2 X 3	.705/17.91	1.267/32.18	.560/14.22
2 X 4	.705/17.91	1.267/32.18	.660/16.76
2 X 6	.735/18.67	1.365/34.67	.860/21.84
2 X 8	.735/18.67	1.365/34.67	1.060/26.92
2 X 10	.735/18.67	1.365/34.67	1.260/32.00



DOUBLE ROW PLUG ASSEMBLY



SINGLE ROW PLUG ASSEMBLY

mat'l. code				surface ISO 1302	tolerance ISO 406 ISO 1101	projection INCH/MM	product family LATCH-N-LOK
ltr	ecn no	dr	date	tolerances unless otherwise specified		scale 1:1	title LATCH-N-LOK CONNECTOR KIT
J	V90581	CGC	2/25/99	angles	.XX±.01/.3		
K	V90628	CGC	3/15/99	linear	.XXX±.005/.13		
L	V01758	TFG	8/23/00	0°±2°	.XXXX±.0020/.051		
M	V03-0798	HTB	7/16/03	dr	D. INGRAM	5/13/96	dwg no 91481
N	M05-0062	ERE	4/01/05	enrg	M. SMYK	5/13/96	
P	M06-0151	MHT	4/10/06	chr	M. SMYK	5/13/96	
R	M06-0365	AGS	9/21/06	appd	M. SMYK	5/13/96	
sheet	revision	R	R	R			type Product Customer Drawing
index	sheet	1	2	3			



FCIconnect.com

Copyright FCI

PRODUCT NUMBER
SEE TABLE

914VW-XYZLF

LEAD FREE OPTION ⑨ ⑩

Y	COLOR PLUG AND CAP	
1	LIGHT GRAY	OBSOLETE
2	OFF-WHITE	
3	DARK GRAY	OBSOLETE
4	BLACK	
5	SLATE GRAY	OBSOLETE
7	SILVER GRAY	
8	PEARL WHITE	OBSOLETE
9	PEBBLE GRAY	

NOTE 6

Z	CABLE EXIT STYLE
0	NO EXIT
1	REAR EXIT
2	RIGHT EXIT
3	LEFT EXIT

NOTE 5

X	SIZES 2X3 & 2X4 CABLE O.D.	SIZES 2X6, 2X8 & 2X10 CABLE O.D.	SIZES 1X4, 1X6, 1X8 & 1X10 CABLE O.D.
0	.040/1.02 TO .065/1.65	.145/3.86 TO .165/4.19	.045/1.14 TO .075/1.91
1	.070/1.78 TO .095/2.41	.170/4.32 TO .195/4.95	.080/2.03 TO .095/2.41
2	.100/2.54 TO .125/3.18	.200/5.08 TO .225/5.72	.100/2.54 TO .115/2.92
3	.130/3.30 TO .155/3.94	.230/5.84 TO .255/6.48	.120/3.05 TO .135/3.43
4	.160/4.06 TO .185/4.70	.260/6.60 TO .285/7.24	.140/3.56 TO .155/3.94
5	.190/4.83 TO .215/5.46	.290/7.34 TO .315/8.00	.160/4.06 TO .175/4.45
6	.220/5.59 TO .245/6.22	NA	.180/4.57 TO .195/4.95
7	.250/6.35 TO .275/6.99	NA	NA
8	NO EXIT HOLE	NO EXIT HOLE	NO EXIT HOLE

W	SIZE CONFIGURATION
1	1 X 4
2	1 X 6
3	1 X 8
4	1 X 10
5	2 X 3
6	2 X 4
7	2 X 6
8	2 X 8
9	2 X 10

V	WIRE SIZE
6	LATCH GUARD (PV'S NOT INCLUDED)
7	
8	PV'S NOT INCLUDED

NOTE 7

EXAMPLE

91486-541 - IS A 2 X 4 REAR EXIT PLUG IN BLACK WITH A CABLE EXIT HOLE SIZE OF .220/5.59 DIA. (Ø.190/4.83 TO Ø.215/5.46 CABLE RANGE).

mat'l. code				surface ISO 1302 <input checked="" type="checkbox"/>	tolerance ISO 406 ISO 1101	projection 	product family LATCH-N-LOK
ltr	ecn	no	dr	date	tolerances unless otherwise specified	INCH/MM 	title
R					angles linear .XX±.01/.3 0'±2' .xxx±.005/.13 .xxxx±.0020/.051		LATCH-N-LOK CONNECTOR KIT
					dr D. INGRAM 5/13/96	scale 1:1	dwg no sheet 2 of 3 size
					enr M. SMYK 5/13/96		91481 A3
					chr M. SMYK 5/13/96		
					appd M. SMYK 5/13/96		type Product Customer Drawing
sheet index	revision sheet						

form: A3

1

2 3

4

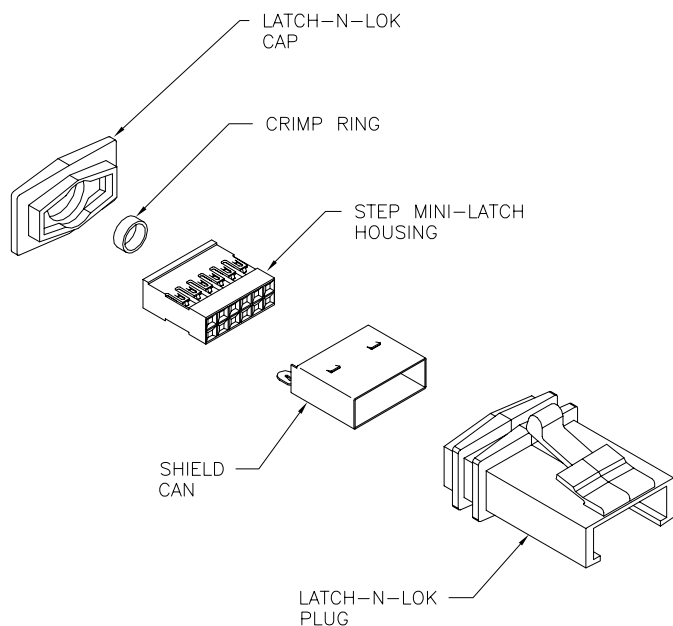
5

6

PRODUCT NUMBER
SEE SHT. 2

NOTES:

1. EACH KIT CONTAINS ONE EACH OF THE FOLLOWING COMPONENTS:
LATCH-N-LOK PLUG NOTE 8
LATCH-N-LOK CAP
STEP MINI-LATCH HOUSING
SHIELD CAN
CRIMP RING
2. COMPONENTS ARE BULK PACKAGE WITH 100 PC OF A COMPONENT PER BAG. PV'S MUST BE ORDERED SEPARATELY.
3. MATERIALS USED: PLUGS AND CAPS ARE MOLDED IN POLYCARBONATE. THE STEP MINI-LATCH HOUSING IS MOLDED IN NYLON, COLOR IS BLACK. THE CRIMP RING IS 304 STAINLESS STEEL, 1/2 HARD. THE SHIELD CAN IS 1/2 HARD BRASS, PLATED WITH 100-150 μ /2.54-4.06 μ OF TIN.
4. PLUGS, CAPS, MINI-LATCH HOUSING AND SHIELD CANS ARE ALL U.L. RECOGNIZED AND CSA APPROVED COMPONENTS.
- ⑤ SINGLE ROW CONNECTORS WITH REAR CABLE EXITS ARE CONSIDERED STANDARD PRODUCTS. SINGLE ROW CONNECTORS WITH SIDE CABLE EXITS ARE "CUSTOMER SPECIALS" AND INCLUDE A NYLON TIE WRAP REPLACING THE CRIMP RING (NORMAL CORD RETENTION WILL BE REDUCED AS A RESULT).
- ⑥ PLUG AND CAP COLORS LISTED ARE LOW GLOSS FINISH.
- ⑦ LATCH GUARD TOOLED IN 2 X 4 SIZE ONLY. THESE KITS DO NOT INCLUDE PV TERMINALS.
- ⑧ PLUG TOOLING WITH NO EXIT HOLE AVAILABLE IN 2 X 3, 2 X 4, AND 2 X 6 SIZES ONLY.
- ⑨ ADD LF SUFFIX AT THE END OF PART NUMBER FOR LEAD FREE OPTION.
- ⑩ THIS PRODUCT MEETS EUROPEAN UNION DIRECTIVES AND OTHER COUNTRY REGULATION AS DESCRIBED IN GS-22-008.



mat'l. code				surface	tolerance	projection	product family		
				ISO 1302	ISO 406 ISO 1101		LATCH-N-LOK		
ltr	ecn no	dr	date	tolerances unless otherwise specified			title LATCH-N-LOK CONNECTOR KIT		
R				angles	linear				
				0°±2'	.XX±.01/.3 .XXX±.005/.13 .XXXX±.0020/.051				
				dr	D. INGRAM	5/13/96			
				enr	M. SMYK	5/13/96			
				chr	M. SMYK	5/13/96			
				appd	M. SMYK	5/13/96			
sheet	revision						dwg no 91481		
index	sheet						type Product Customer Drawing		

form: A3

1

2

3

4

5

6