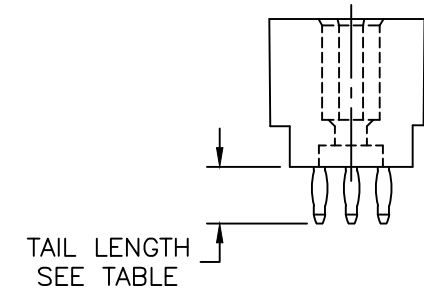
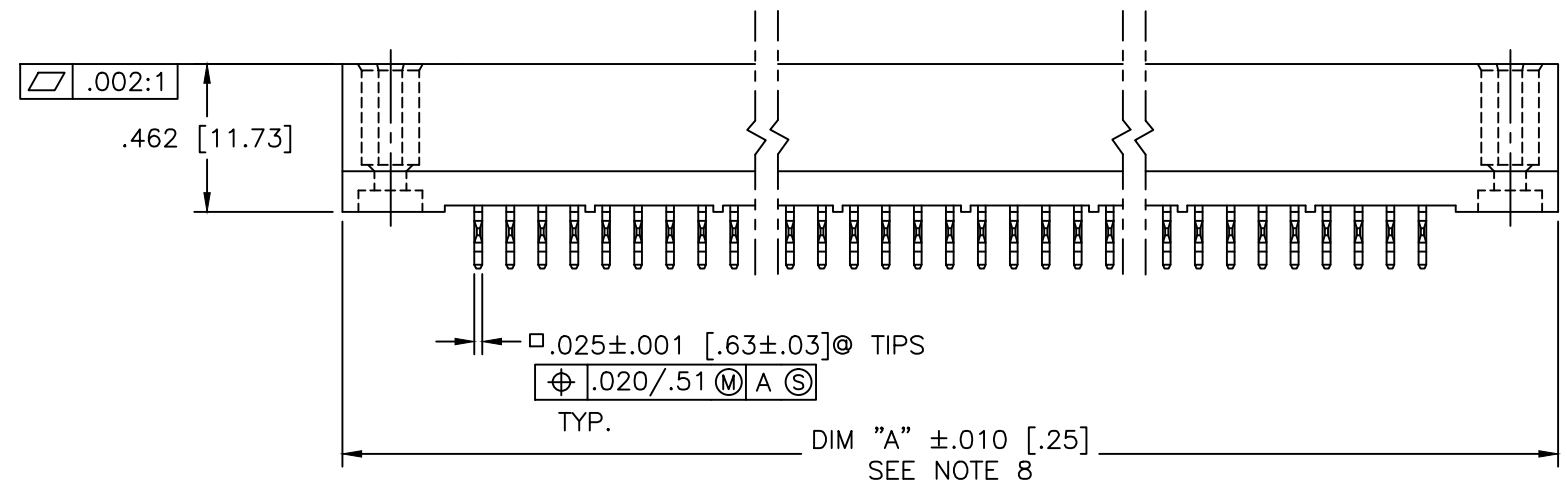
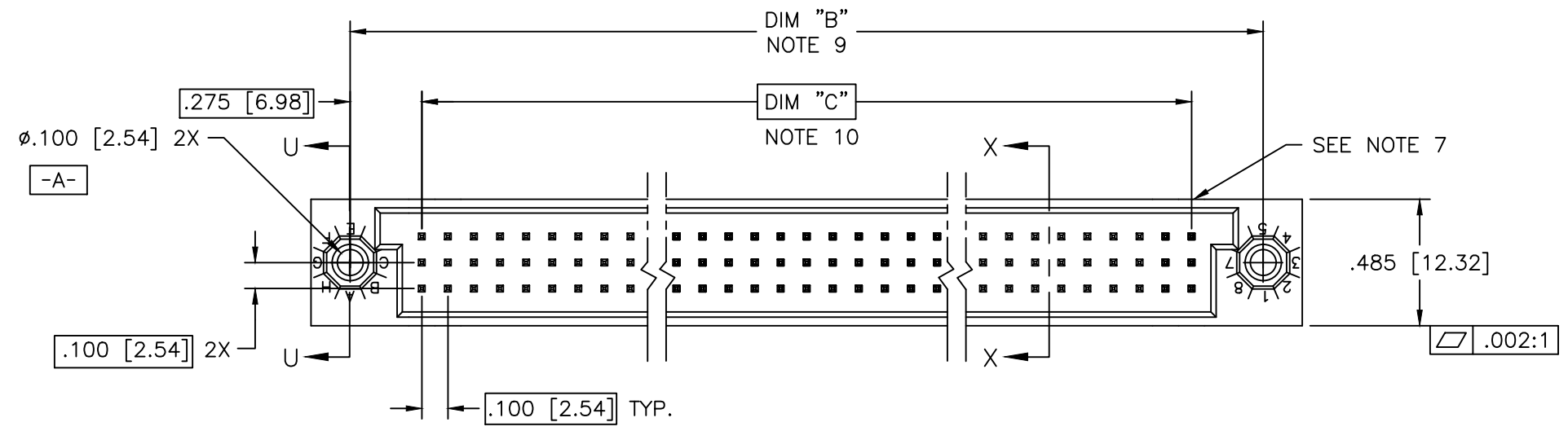
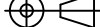
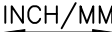



PRODUCT NUMBER  
SEE TABLE



mat'l. code SEE NOTE 3				surface ISO 1302 ✓				tolerance ISO 406 ISO 1101		projection 			product family HPC																																																																																																																																																																																																																																																																																																																																																																																																																																																																																																																																																																																																																																																																																																																																																																																																																																																																																																																																																																																																																																																																																																																			
ltr	ecn no	dr	date	tolerances unless otherwise specified											title 3 ROW VERTICAL HEADER W/PRESS-FIT PINS, 0 G.P.																																																																																																																																																																																																																																																																																																																																																																																																																																																																																																																																																																																																																																																																																																																																																																																																																																																																																																																																																																																																																																																																																																																	
P	I11-0094	SAL	2011-05-23	angles	linear	.XX±.01/.3																																																																																																																																																																																																																																																																																																																																																																																																																																																																																																																																																																																																																																																																																																																																																																																																																																																																																																																																																																																																																																																																																																																										
-	-	-	-			.XXX±.005/.13																																																																																																																																																																																																																																																																																																																																																																																																																																																																																																																																																																																																																																																																																																																																																																																																																																																																																																																																																																																																																																																																																																																										
J	V05-0514	TAB	8/2/05	0°±2'		.XXXX±.0020/.05																																																																																																																																																																																																																																																																																																																																																																																																																																																																																																																																																																																																																																																																																																																																																																																																																																																																																																																																																																																																																																																																																																																										
K	V05-0999	DAI	10/28/05	dr	D.SHEAFER			1991-03-14						dwg no					sheet 1 of 16					size																																																																																																																																																																																																																																																																																																																																																																																																																																																																																																																																																																																																																																																																																																																																																																																																																																																																																																																																																																																																																																																																																																								
L	V05-1039	DAI	11/11/05	engr	S.CLARK			1991-03-14						50006					A3																																																																																																																																																																																																																																																																																																																																																																																																																																																																																																																																																																																																																																																																																																																																																																																																																																																																																																																																																																																																																																																																																																													
M	M06-0283	MHT	7/27/06	chr	S.ALOSIUS			2011-05-23																																																																																																																																																																																																																																																																																																																																																																																																																																																																																																																																																																																																																																																																																																																																																																																																																																																																																																																																																																																																																																																																																																																								
N	M06-0490	MHT	12/13/06	appd	BIJU K PAUL			2011-05-23																																																																																																																																																																																																																																																																																																																																																																																																																																																																																																																																																																																																																																																																																																																																																																																																																																																																																																																																																																																																																																																																																																																								
sheet		revision		P	P	P	P	P	P	P	P	P	P	P	P	P	P	P	P	P	P	P	P	P	P	P	P	P	P	P	P	P	P	P	P	P	P	P	P	P	P	P	P	P	P	P	P	P	P	P	P	P	P	P	P	P	P	P	P	P	P	P	P	P	P	P	P	P	P	P	P	P	P	P	P	P	P	P	P	P	P	P	P	P	P	P	P	P	P	P	P	P	P	P	P	P	P	P	P	P	P	P	P	P	P	P	P	P	P	P	P	P	P	P	P	P	P	P	P	P	P	P	P	P	P	P	P	P	P	P	P	P	P	P	P	P	P	P	P	P	P	P	P	P	P	P	P	P	P	P	P	P	P	P	P	P	P	P	P	P	P	P	P	P	P	P	P	P	P	P	P	P	P	P	P	P	P	P	P	P	P	P	P	P	P	P	P	P	P	P	P	P	P	P	P	P	P	P	P	P	P	P	P	P	P	P	P	P	P	P	P	P	P	P	P	P	P	P	P	P	P	P	P	P	P	P	P	P	P	P	P	P	P	P	P	P	P	P	P	P	P	P	P	P	P	P	P	P	P	P	P	P	P	P	P	P	P	P	P	P	P	P	P	P	P	P	P	P	P	P	P	P	P	P	P	P	P	P	P	P	P	P	P	P	P	P	P	P	P	P	P	P	P	P	P	P	P	P	P	P	P	P	P	P	P	P	P	P	P	P	P	P	P	P	P	P	P	P	P	P	P	P	P	P	P	P	P	P	P	P	P	P	P	P	P	P	P	P	P	P	P	P	P	P	P	P	P	P	P	P	P	P	P	P	P	P	P	P	P	P	P	P	P	P	P	P	P	P	P	P	P	P	P	P	P	P	P	P	P	P	P	P	P	P	P	P	P	P	P	P	P	P	P	P	P	P	P	P	P	P	P	P	P	P	P	P	P	P	P	P	P	P	P	P	P	P	P	P	P	P	P	P	P	P	P	P	P	P	P	P	P	P	P	P	P	P	P	P	P	P	P	P	P	P	P	P	P	P	P	P	P	P	P	P	P	P	P	P	P	P	P	P	P	P	P	P	P	P	P	P	P	P	P	P	P	P	P	P	P	P	P	P	P	P	P	P	P	P	P	P	P	P	P	P	P	P	P	P	P	P	P	P	P	P	P	P	P	P	P	P	P	P	P	P	P	P	P	P	P	P	P	P	P	P	P	P	P	P	P	P	P	P	P	P	P	P	P	P	P	P	P	P	P	P	P	P	P	P	P	P	P	P	P	P	P	P	P	P	P	P	P	P	P	P	P	P	P	P	P	P	P	P	P	P	P	P	P	P	P	P	P	P	P	P	P	P	P	P	P	P	P	P	P	P	P	P	P	P	P	P	P	P	P	P	P	P	P	P	P	P	P	P	P	P	P	P	P	P	P	P	P	P	P	P	P	P	P	P	P	P	P	P	P	P	P	P	P	P	P	P	P	P	P	P	P	P	P	P	P	P	P	P	P	P	P	P	P	P	P	P	P	P	P	P	P	P	P	P	P	P	P	P	P	P	P	P	P	P	P	P	P	P	P	P	P	P	P	P	P	P	P	P	P	P	P	P	P	P	P	P	P	P	P	P	P	P	P	P	P	P	P	P	P	P	P	P	P	P	P	P	P	P	P	P	P	P	P	P	P	P	P	P	P	P	P	P	P	P	P	P	P	P	P	P	P	P	P	P	P	P	P	P	P	P	P	P	P	P	P	P	P	P	P	P	P	P	P	P	P	P	P	P	P	P	P	P	P	P	P	P	P	P	P	P	P	P	P	P	P	P	P	P	P	P	P	P	P	P	P	P	P	P	P	P	P	P	P	P	P	P	P	P	P	P	P	P	P	P	P	P	P	P	P	P	P	P	P	P	P	P	P	P	P	P	P	P	P	P	P	P	P	P	P	P	P	P	P	P	P	P	P	P	P	P	P	P	P	P	P	P	P	P	P	P	P	P	P	P	P	P	P	P	P	P	P	P	P	P	P	P	P	P	P	P	P	P	P	P	P	P	P	P	P	P	P	P	P	P	P	P	P	P	P	P	P	P	P	P	P	P	P	P	P	P	P	P	P	P	P	P	P	P	P	P	P	P	P	P	P	P	P	P	P	P	P	P	P	P	P	P	P	P	P	P	P	P	P	P	P	P	P	P	P	P	P	P	P	P	P	P	P	P	P	P	P	P	P	P	P	P	P	P	P	P	P	P	P	P	P	P	P	P	P	P	P	P	P	P	P	P	P	P	P	P	P	P	P	P	P	P	P	P	P	P	P	P	P	P	P	P	P	P	P	P	P	P	P	P	P	P	P	P	P	P	P	P	P	P	P	P	P	P	P	P	P	P	P	P	P	P	P	P	P	P	P	P	P	P	P	P	P	P	P	P	P	P	P	P	P	P	P	P	P	P	P	P	P	P	P	P	P	P	P	P	P	P	P	P	P	P	P	P	P	P	P	P	P	P

form: A3

PRODUCT NUMBER  
SEE TABLE

NOTES:

- ① PRODUCT NUMBERING CODE:  
50006 - X YYY Z LF  
LEAD FREE (OPTIONAL)  
TAIL LENGTH SEE TABLE  
NO. OF POSITIONS SEE NOTE 2  
PLATING SEE TABLE  
BASE NUMBER



- PRODUCT NUMBERING CODE FOR  
SELECT LOAD PART NUMBERS:  
50006 - XX YYY LF  
LEAD FREE (OPTIONAL)  
SEQUENCE NUMBER  
ALWAYS 'XX'  
BASE NUMBER

- ② THIS PRODUCT IS CONFIGURED IN SIZES OF 6 thru 80 COLUMNS IN INCREMENTS OF ONE.  
i.e.: 6,7,8,9,.....79,80.
- ③ HOUSING MATERIAL: GLASS AND MINERAL FILLED HIGH TEMP. THERMOPLASTIC. FLAME RETARDANT PER UL94V-0. COLOR: BLACK.  
PIN MATERIAL: PHOS BRONZE
- ④ CONTACT PLATING OPTIONS:  
SEE PRODUCT NUMBER TABLE
- ⑤  $\phi .0453/1.151$  DRILLED HOLE PLATED WITH  $.0003/.007$  MIN. SnPb OVER  $.001/.03$  to  $.003/.08$  Cu. PLATING TO ACHIEVE A  $\phi .040 \pm .003/1.02 \pm .08$  HOLE.
- ⑥ TO ASSURE PROPER INSTALLATION: TOOLING, AS SPECIFIED IN INSTRUCTION MANUAL 155915-001 MUST BE USED. PIN MATING LENGTH WILL BE  $\pm .002/.05$  AFTER INSTALLATION.
- ⑦ COMPANY NAME, PART NUMBER AND LOT CODE TO APPEAR ON THIS SURFACE PER BUS-12-108.
- ⑧ DIM "A" CALCULATION =  $.100[2.54] \times \text{NO. OF COLUMNS} + .75[19.1]$
- ⑨ DIM "B" CALCULATION =  $.100[2.54] \times \text{NO. OF COLUMNS} + .450[11.43]$
- ⑩ DIM "C" CALCULATION =  $.100[2.54] \times \text{NO. OF COLUMNS} - .100[2.54]$
11. ALL POSITIONS ARE LOADED EXCEPT FOR -XXYYY ASSEMBLIES WHICH HAVE SELECTIVE LOADING.
- ⑫ REFERENCE 50807 FOR F.M.L.B. AVAILABLE OPTIONS AND WORKSHEET.
13. THIS PRODUCT (WITH 'LF' SUFFIX) MEETS EUROPEAN UNION DIRECTIVES AND OTHER COUNTRY REGULATIONS AS DESCRIBED IN GS-22-008.
14. THIS HOUSING WILL WITHSTAND EXPOSURE TO  $260^{\circ}\text{C}$  PEAK TEMPERATURE FOR 10-30 SECONDS IN A CONVECTION, INFRA-RED OR VAPOR PHASE REFLOW OVEN.

SECTION U-U

SECTION X-X

RECOMMENDED PCB LAYOUT  
(ALL HOLES LOCATED ON  $.100/2.54$  GRID  
UNLESS OTHERWISE SPECIFIED)

mat'l. code SEE NOTE 3				surface ISO 1302 ✓	tolerance ISO 406 ISO 1101	projection 	product family HPC
ltr	ecn no	dr	date	tolerances unless otherwise specified		INCH/MM scale 1:1 	title 3 ROW VERTICAL HEADER W/PRESS-FIT PINS, 0 G.P.
P				angles	linear .XX±.01/.3 .XXX±.005/.13 .XXXX±.0020/.051		dwg no 50006
				0°±2°			sheet 2 of 16 size A3
				dr	D.SHEAFER 1991-03-14		type Product Customer Drawing
				enr	S.CLARK 1991-03-14		
				chr	S ALOSIOUS 2011-05-23		
				appd	BIJU K PAUL 2011-05-23		
sheet index	revision sheet						



FCIconnect.com

Copyright FCI

PRODUCT NO.	NUMBER OF POSITIONS NOTE 2	TAIL LENGTH ±.015/0.38	CONTACT PLATING
50006-1YYYA	YYY	.177/4.50	30u"/.76u GOLD
50006-1YYYC	YYY	.533/13.54	30u"/.76u GOLD
50006-1YYYD	YYY	.733/18.62	30u"/.76u GOLD
50006-1YYYG	YYY	.250/6.35	30u"/.76u GOLD
50006-1YYYL	YYY	.188/4.78	30u"/.76u GOLD
50006-1YYYP	YYY	.470/11.94	30u"/.76u GOLD
50006-3YYYA	YYY	.177/4.50	50u"/1.27u GOLD
50006-3YYYC	YYY	.533/13.54	50u"/1.27u GOLD
50006-3YYYD	YYY	.733/18.62	50u"/1.27u GOLD
50006-3YYYG	YYY	.250/6.35	50u"/1.27u GOLD
50006-3YYYL	YYY	.188/4.78	50u"/1.27u GOLD
50006-3YYYP	YYY	.470/11.94	50u"/1.27u GOLD
50006-5YYYA	YYY	.177/4.50	30u"/.76u GXT
50006-5YYALF	YYY	.177/4.50	30u"/.76u GXT
50006-5YYYC	YYY	.533/13.54	30u"/.76u GXT
50006-5YYCLF	YYY	.533/13.54	30u"/.76u GXT
50006-5YYYD	YYY	.733/18.62	30u"/.76u GXT
50006-5YYDLF	YYY	.733/18.62	30u"/.76u GXT
50006-5YYYG	YYY	.250/6.35	30u"/.76u GXT
50006-5YYGLF	YYY	.250/6.35	30u"/.76u GXT
50006-5YYYL	YYY	.188/4.78	30u"/.76u GXT
50006-5YYLLF	YYY	.188/4.78	30u"/.76u GXT
50006-5YYYP	YYY	.470/11.94	30u"/.76u GXT
50006-5YYPLF	YYY	.470/11.94	30u"/.76u GXT
50006-XX010	150	SEE SHEET 4	30u"/.76u GXT
50006-XX010LF	150	SEE SHEET 4	30u"/.76u GXT
50006-XX025	18	SEE SHEET 5	30u"/.76u GXT
50006-XX025LF	18	SEE SHEET 5	30u"/.76u GXT
50006-XX027	96	SEE SHEET 6	30u"/.76u GOLD
50006-XX027LF	96	SEE SHEET 6	30u"/.76u GXT
50006-XX028	30	SEE SHEET 7	30u"/.76u GOLD
50006-XX028LF	30	SEE SHEET 7	30u"/.76u GXT
50006-XX045	180	SEE SHEET 8	30u"/.76u GXT
50006-XX045LF	180	SEE SHEET 8	30u"/.76u GXT
50006-XX049	96	SEE SHEET 9	30u"/.76u GOLD
50006-XX049LF	96	SEE SHEET 9	30u"/.76u GXT
50006-XX053	150	SEE SHEET 10	30u"/.76u GXT
50006-XX053LF	150	SEE SHEET 10	30u"/.76u GXT
50006-XX054	150	SEE SHEET 11	30u"/.76u GOLD
50006-XX054LF	150	SEE SHEET 11	30u"/.76u GXT
50006-XX055	30	SEE SHEET 12	30u"/.76u GOLD
50006-XX055LF	30	SEE SHEET 12	30u"/.76u GXT
50006-XX056	150	SEE SHEET 13	30u"/.76u GOLD
50006-XX056LF	150	SEE SHEET 13	30u"/.76u GXT
50006-XX057	150	SEE SHEET 14	30u"/.76u GOLD
50006-XX057LF	150	SEE SHEET 14	30u"/.76u GXT
50006-XX058	240	SEE SHEET 15	50u"/1.27u GOLD
50006-XX058LF	240	SEE SHEET 15	50u"/1.27u GXT
50006-XX059	240	SEE SHEET 16	50u"/1.27u GOLD
50006-XX059LF	240	SEE SHEET 16	50u"/1.27u GXT

mat'l. code SEE NOTE 3				surface ISO 1302 ✓		tolerance ISO 406 ISO 1101		projection 		product family HPC					
ltr	ecr	no	dr	date	tolerances unless otherwise specified						title 3 ROW VERTICAL HEADER W/PRESS-FIT PINS, 0 G.P.				
P					angles	linear	.XX±.01/.3								
							.XXX±.005/.13	scale 1:1		dwg no 50006					
					0°±2°		.XXXX±.0020/.051								
					dr	D.SHEAFER	1991-03-14			sheet 3 of 16 size A3					
					enr	S.CLARK	1991-03-14								
					chr	S.ALOSIOUS	2011-05-23								
					appd	BIJU K PAUL	2011-05-23								
sheet index		revision sheet										type Product Customer Drawing			

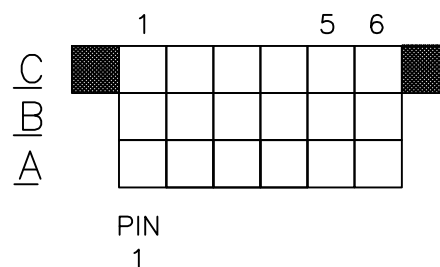
[illegible][illegible]

- | ITEM KEY | QTY. | MATING LENGTH | TAIL LENGTH  |
|----------|------|---------------|--------------|
| A        | 136  | .200 / 5.08   | .177 / 4.50  |
| B        | 12   | .200 / 5.08   | .533 / 13.54 |
| C        | 2    | .240 / 6.10   | .177 / 4.50  |

1	2	3	4	5	6
---	---	---	---	---	---

PRODUCT NUMBER
50006-XX025
50006-XX025LF

FOR PRODUCT NUMBERS 50006-XX025 AND 50006-XX025LF ONLY



CUSTOMER NOTE: END GUIDE PINS ARE SUGGESTED IN YOUR APPLICATION TO PREVENT STUBBING OF THE .260/6.60 MATING LENGTH SIGNAL PINS.

NOTES FOR 50006-XX025 AND 50006-XX025LF ONLY:

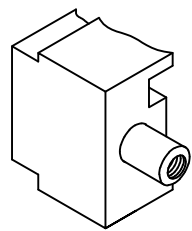
- ALL POSITIONS ARE LOADED WITH "A" .
- COLUMN 1, ROW A IS DESIGNATED AS SIGNAL PIN 1, AS VIEWED FROM THE MATING FACE.
- SIGNAL DATA FOR 50006-XX025 AND 50006-XX025LF:  
SIZE 3 x 6  
TOTAL NO. OF POSITIONS - 18  
NO. OF POSITIONS LOADED - 18

ITEM KEY	QTY.	MATING LENGTH	TAIL LENGTH
A	18	.260 / 6.60	.533 / 13.54

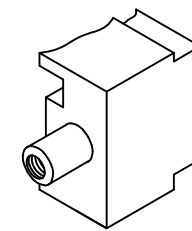
mat'l. code				surface ISO 1302	tolerance ISO 406 ISO 1101	projection	product family HPC
ltr	ecn no	dr	date	tolerances unless otherwise specified		 INCH/MM	title
P				angles	linear		3 ROW VERTICAL HEADER
				0°±2°			W/PRESS-FIT PINS, 0 G.P.
				dr	D.SHEAFER	1991-03-14	dwg no
				enr	S.CLARK	1991-03-14	sheet 5 of 16
				chr	S ALOSIOUS	2011-05-23	size
				appd	BIJU K PAUL	2011-05-23	A3
sheet index	revision sheet						type
							Product Customer Drawing

form: A3

PRODUCT NUMBER
50006-XX027
50006-XX027LF

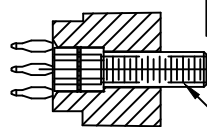


L.E.



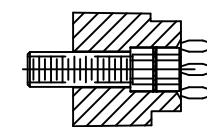
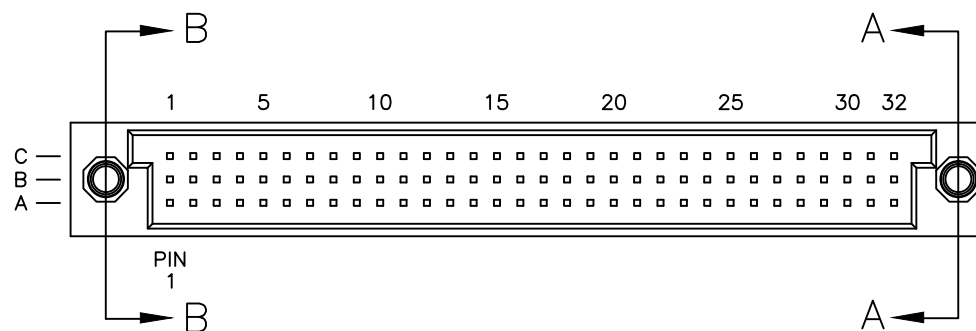
R.E.

.195 [4.95]  
REF



SEC B-B

NOTE 2



SEC A-A

FOR PRODUCT NUMBERS 50006-XX027 AND 50006-XX027LF

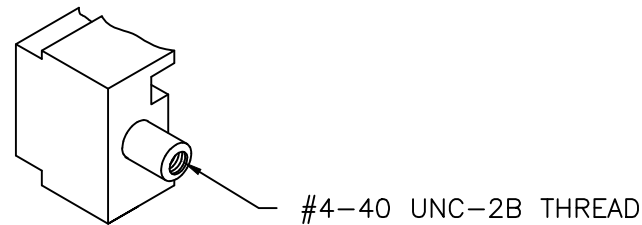
NOTES:

1. IDENTICAL TO P/N 50006-1096A EXCEPT AS SHOWN W/JACK SCREW INSERTS INSTALLED ON BOTH ENDS.
2. HARDWARE P/N 95729-001.

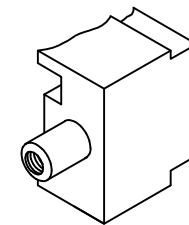
mat'l. code				surface ISO 1302	tolerance ISO 406 ISO 1101	projection 	product family HPC			
ltr	ecn no	dr	date	tolerances unless otherwise specified		INCH/MM scale 1:1 	title 3 ROW VERTICAL HEADER W/PRESS-FIT PINS, 0 G.P.			
P				angles	linear		dwg no 50006 type Product Customer Drawing			
				0°±2°						
				dr	D.SHEAFER					
				enr	S.CLARK	1991-03-14	sheet 6 of 16 size A3			
				chr	S.ALOSIOUS	2011-05-23				
				appd	BIJU K PAUL	2011-05-23				
sheet index	revision sheet									

form: A3

PRODUCT NUMBER
50006-XX028
50006-XX028LF

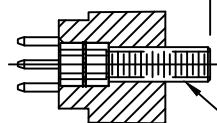


L.E.



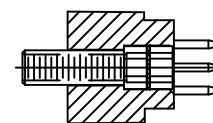
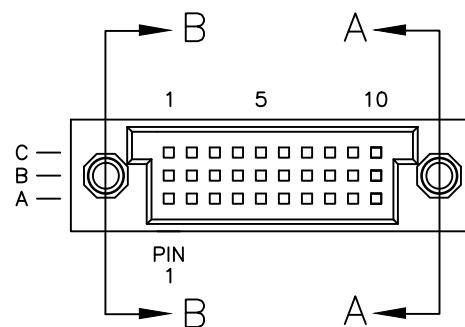
R.E.

0.195 [4.94]  
REF



SEC B-B

NOTE 2



SEC A-A

FOR PRODUCT NUMBERS 50006-XX028 AND 50006-XX028LF

NOTES:

1. IDENTICAL TO P/N 50006-1030A EXCEPT AS SHOWN W/JACK SCREW INSERTS INSTALLED ON BOTH ENDS.
2. HARDWARE P/N 95729-001.

mat'l. code				surface ISO 1302	✓	tolerance ISO 406 ISO 1101	projection 	product family HPC			
ltr	ecn no	dr	date	tolerances unless otherwise specified			INCH/MM scale 1:1 	title 3 ROW VERTICAL HEADER W/PRESS-FIT PINS, 0 G.P.			
P				angles	linear	.XX±.01/.3		dwg no 50006			
						.XXX±.005/.13					
				0°±2°		.XXX±.0020/.051					
				dr	D.SHEAFER	1991-03-14	FCI	sheet 7 of 16			
				enr	S.CLARK	1991-03-14		size A3			
				chr	S.ALOSIOUS	2011-05-23					
				appd	BIJU K PAUL	2011-05-23		type Product Customer Drawing			
sheet index	revision sheet										

form: A3

PRODUCT NUMBER
50006-XX045
50006-XX045LF

FOR PRODUCT NUMBERS 50006-XX045 AND 50006-XX045LF ONLY

	1	5	10	15	20	25	30	
C								
B								
A								
	PIN 1							
	31	35	40	45	50	55	60	

- NOTES FOR 50006-XX045 AND 50006-XX045LF ONLY:
- ALL POSITIONS ARE LOADED WITH "A".
  - COLUMN 1, ROW A IS DESIGNATED AS SIGNAL PIN 1, AS VIEWED FROM THE MATING FACE.
  - SIGNAL DATA FOR 50006-XX045 AND 50006-XX045LF:  
 SIZE 3 x 60  
 TOTAL NO. OF POSITIONS - 180  
 NO. OF POSITIONS LOADED - 180

ITEM KEY	QTY.	MATING LENGTH	TAIL LENGTH
A	180	.220 - 5.59	.597 - 15.16

mat'l. code				surface ISO 1302	tolerance ISO 406 ISO 1101	projection	product family
ltr	ecr	no	dr	date	tolerances unless otherwise specified		HPC
P					angles linear	INCH/MM	title
					0°±2°	scale 1:1	3 ROW VERTICAL HEADER W/PRESS-FIT PINS, 0 G.P.
				dr	D.SHEAFER	1991-03-14	dwg no
				enr	S.CLARK	1991-03-14	sheet 8 of 16
				chr	S ALOSIOUS	2011-05-23	size
				appd	BIJU K PAUL	2011-05-23	A3
sheet index	revision sheet						type
							Product Customer Drawing



PRODUCT NUMBER
50006-XX049
50006-XX049LF

FOR PRODUCT NUMBER 50006-XX049 AND 50006-XX049LF ONLY

	1		5		10		15		20		25		30	32	
C	B		B		B		B		B		B		B	B	C
B	B		B		B		B		B		B		B	B	
A	B		B		B		B		B		B		B	B	

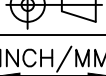
PIN  
1

CUSTOMER NOTE: END GUIDE PINS ARE SUGGESTED IN YOUR APPLICATION TO  
PREVENT STUBBING OF THE .260/6.60 MATING LENGTH SIGNAL PINS.

NOTES FOR 50006-XX049 AND 50006-XX049LF ONLY:

- ALL POSITIONS ARE LOADED WITH "A" EXCEPT AS SHOWN.
- COLUMN 1, ROW A IS DESIGNATED AS SIGNAL PIN 1, AS VIEWED FROM THE MATING FACE.
- SIGNAL DATA FOR 50006-XX049 AND 50006-XX049LF:  
SIZE 3 x 32  
TOTAL NO. OF POSITIONS - 96  
NO. OF POSITIONS LOADED - 96

ITEM KEY	QTY.	MATING LENGTH	TAIL LENGTH
A	62	.220 / 5.59	.177 / 4.50
B	33	.260 / 6.60	.177 / 4.50
C	1	.180 / 4.57	.177 / 4.50

mat'l. code				surface ISO 1302	tolerance ISO 406 ISO 1101	projection 	product family HPC
ltr	ecn no	dr	date	tolerances unless otherwise specified		INCH/MM scale 1:1	title
P				angles	linear		3 ROW VERTICAL HEADER
				0°±2'			W/PRESS-FIT PINS, 0 G.P.
				dr	D.SHEAFER	1991-03-14	dwg no
				enr	S.CLARK	1991-03-14	sheet 9 of 16
				chr	S ALOSIOUS	2011-05-23	size
				appd	BIJU K PAUL	2011-05-23	A3
sheet index	revision sheet						type Product Customer Drawing

form: A3

PRODUCT NUMBER
50006-XX053
50006-XX053LF

FOR PRODUCT NUMBERS 50006-XX053 AND 50006-XX053LF ONLY

	1			5					10						15					20						25
C				C																						
B				C	C	B																C	C			
A																										
PIN 1																										
	26				30					35					40					45				C	C	C
																								C	C	

CUSTOMER NOTE: END GUIDE PINS ARE SUGGESTED IN YOUR APPLICATION TO PREVENT STUBBING OF THE .260 MATING LENGTH SIGNAL PINS.

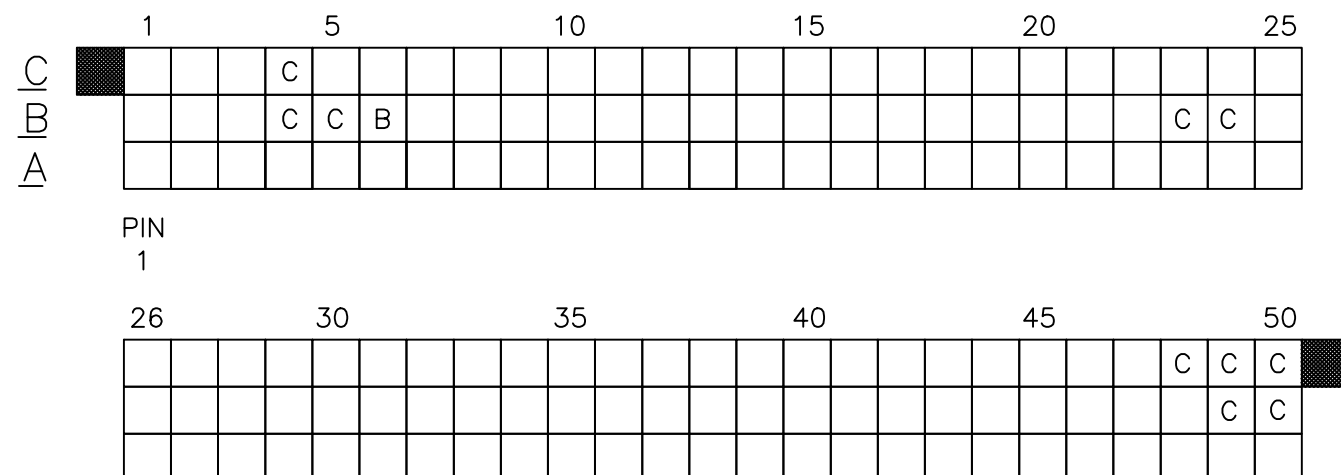
- ALL POSITIONS ARE LOADED WITH "A" EXCEPT AS SHOWN.
- COLUMN 1, ROW A IS DESIGNATED AS SIGNAL PIN 1, AS VIEWED FROM THE MATING FACE.
- SIGNAL DATA FOR 50006-XX053 AND 50006-XX053LF:  
 SIZE 3 x 50  
 TOTAL NO. OF POSITIONS – 150  
 NO. OF POSITIONS LOADED – 150

ITEM KEY	QTY.	MATING LENGTH	TAIL LENGTH
A	139	.220 / 5.59	.250 / 6.35
B	1	.180 / 4.57	.250 / 6.35
C	10	.260 / 6.60	.250 / 6.35

mat'l. code				surface ISO 1302	tolerance ISO 406 ISO 1101	projection	product family
ltr	ecn	no	dr	date	tolerances unless otherwise specified	INCH/MM	HPC
P					angles linear .XX±.01/.3		title
					0°±2° .XXX±.005/.13		3 ROW VERTICAL HEADER
					.XXXX±.0020/.051	scale 1:1	W/PRESS-FIT PINS, 0 G.P.
			dr	D.SHEAFER	1991-03-14	FCJ	dwg no
			enr	S.CLARK	1991-03-14		sheet10 of 16
			chr	S ALOSIOUS	2011-05-23		size
			appd	BIJU K PAUL	2011-05-23		A3
sheet index	revision sheet						type Product Customer Drawing

PRODUCT NUMBER
50006-XX054
50006-XX054LF

FOR PRODUCT NUMBERS 50006-XX054 AND 50006-XX054LF ONLY



CUSTOMER NOTE: END GUIDE PINS ARE SUGGESTED IN YOUR APPLICATION TO PREVENT STUBBING OF THE .260 MATING LENGTH SIGNAL PINS.

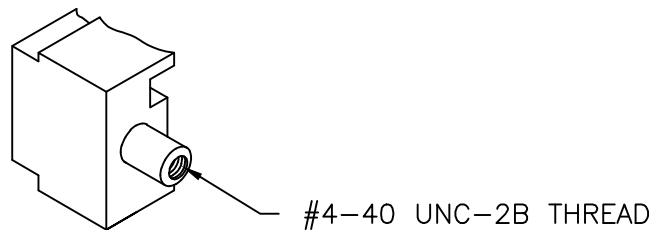
NOTES FOR 50006-XX054 AND 50006-XX054LF ONLY:

- ALL POSITIONS ARE LOADED WITH "A" EXCEPT AS SHOWN.
- COLUMN 1, ROW A IS DESIGNATED AS SIGNAL PIN 1, AS VIEWED FROM THE MATING FACE.
- SIGNAL DATA FOR 50006-XX054 AND 50006-XX054LF:  
SIZE 3 x 50  
TOTAL NO. OF POSITIONS - 150  
NO. OF POSITIONS LOADED - 150

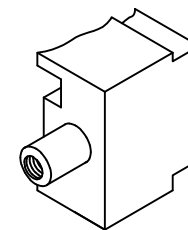
ITEM KEY	QTY.	MATING LENGTH	TAIL LENGTH
A	139	.220 / 5.59	.561 / 14.25
B	1	.180 / 4.57	.521 / 13.23
C	10	.260 / 6.60	.601 / 15.27

mat'l. code				surface ISO 1302	tolerance ISO 406 ISO 1101	projection	product family HPC
ltr	ecn	no	dr	date	tolerances unless otherwise specified	INCH/MM	title
P					angles linear	0°±2°	3 ROW VERTICAL HEADER W/PRESS-FIT PINS, 0 G.P.
						scale 1:1	dwg no
					dr	D.SHEAFER	1991-03-14
					enr	S.CLARK	1991-03-14
					chr	S ALOSIOUS	2011-05-23
					appd	BIJU K PAUL	2011-05-23
sheet index	revision sheet						type
							Product Customer Drawing

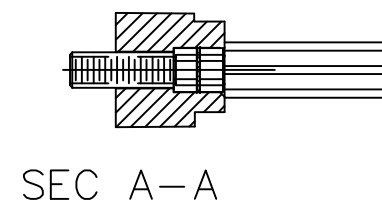
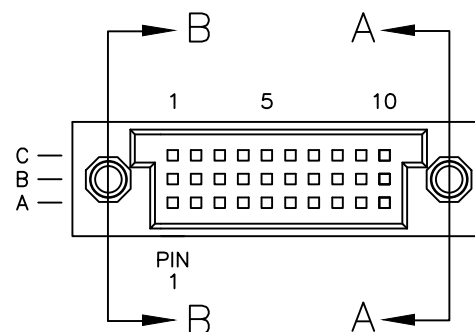
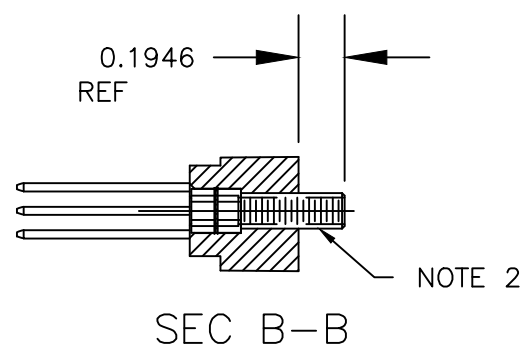
PRODUCT NUMBER
50006-XX055
50006-XX055LF



L.E.



R.E.



FOR PRODUCT NUMBERS 50006-XX055 AND 50006-XX055LF

NOTES:

1. IDENTICAL TO P/N 50006-1030D EXCEPT AS SHOWN W/JACK SCREW INSERTS INSTALLED ON BOTH ENDS.
2. HARDWARE P/N 95729-001.

mat'l. code				surface ISO 1302	tolerance ISO 406 ISO 1101	projection 	product family HPC			
ltr	ecn no	dr	date	tolerances unless otherwise specified		INCH/MM scale 1:1 	title 3 ROW VERTICAL HEADER W/PRESS-FIT PINS, 0 G.P.			
P				angles	linear		dwg no 50006 type Product Customer Drawing			
				0°±2°						
				dr	D.SHEAFER					
				enr	S.CLARK		sheet12 of 16size A3			
				chr	S.ALOSIUS					
				appd	BIJU K PAUL					
sheet index	revision sheet									

form: A3

PRODUCT NUMBER
50006-XX056
50006-XX056LF

FOR PRODUCT NUMBER 50006-XX056 AND 50006-XX056LF ONLY

	1			5					10					15					20					25
C				C																				
B				C	C	B															C	C		
A																								
PIN 1																								
	26				30					35					40					45				50
																							C	
																							C	C

CUSTOMER NOTE: END GUIDE PINS ARE SUGGESTED IN YOUR APPLICATION TO PREVENT STUBBING OF THE .260 MATING LENGTH SIGNAL PINS.

- NOTES FOR 50006-XX056 AND 50006-XX056LF ONLY:
- ALL POSITIONS ARE LOADED WITH "A" EXCEPT AS SHOWN.
  - COLUMN 1, ROW A IS DESIGNATED AS SIGNAL PIN 1, AS VIEWED FROM THE MATING FACE.
  - SIGNAL DATA FOR 50006-XX056 AND 50006-XX056LF:  
 SIZE 3 x 50  
 TOTAL NO. OF POSITIONS - 150  
 NO. OF POSITIONS LOADED - 150

ITEM KEY	QTY.	MATING LENGTH	TAIL LENGTH
A	141	.220 / 5.59	.177 / 4.50
B	1	.180 / 4.57	.177 / 4.50
C	8	.260 / 6.60	.177 / 4.50

mat'l. code				surface ISO 1302	tolerance ISO 406 ISO 1101	projection	product family
ltr	ecn	no	dr	tolerances unless otherwise specified		 INCH/MM	title
P				angles	linear		3 ROW VERTICAL HEADER
				0°±2°	.XX±.01/.3 .XXX±.005/.13 .XXXX±.0020/.051		W/PRESS-FIT PINS, 0 G.P.
				dr	D.SHEAFER	1991-03-14	dwg no
				enr	S.CLARK	1991-03-14	sheet13 of 16size
				chr	S ALOSIUS	2011-05-23	50006A3
				appd	BIJU K PAUL	2011-05-23	type
sheet	revision						Product Customer Drawing
index	sheet						

A horizontal number line is shown with tick marks labeled 1, 2, 3, 4, 5, and 6. A thick vertical line is drawn between the tick marks for 3 and 4, representing the value 3.5.

[illegible]

1

CUSTOMER NOTE: END GUIDE PINS ARE SUGGESTED IN YOUR APPLICATION TO PREVENT STUBBING OF THE .260 MATING LENGTH SIGNAL PINS.

ITEM KEY	QTY.	MATING LENGTH	TAIL LENGTH
A	101	.220 / 5.59	.561 / 14.25
B	1	.180 / 4.57	.521 / 13.23
C	8	.260 / 6.60	.601 / 15.27
D	40	.220 / 5.59	.177 / 4.50

form: A3

[illegible][illegible]

A	PIN	A
---	-----	---

B		B
---	--	---

3. SIGNAL DATA FOR 50000-XX058 AND 50000-XX058LF.

[illegible]

**PDM: Rev:P**      STATUS: **Released**      Printed: Jul 02, 2011

[illegible][illegible]

A	PIN	A
---	-----	---

[illegible]

3. SIGNAL DATA FOR 50006-XX059 AND 50006-XX059LF:  
SIZE 3 x 80

- | mat'l. code | surface | tolerance | projection | product family |
|-------------|---------|-----------|------------|----------------|
|-------------|---------|-----------|------------|----------------|

[illegible]

form: A3	1	2	3	4	5	6
----------	---	---	---	---	---	---