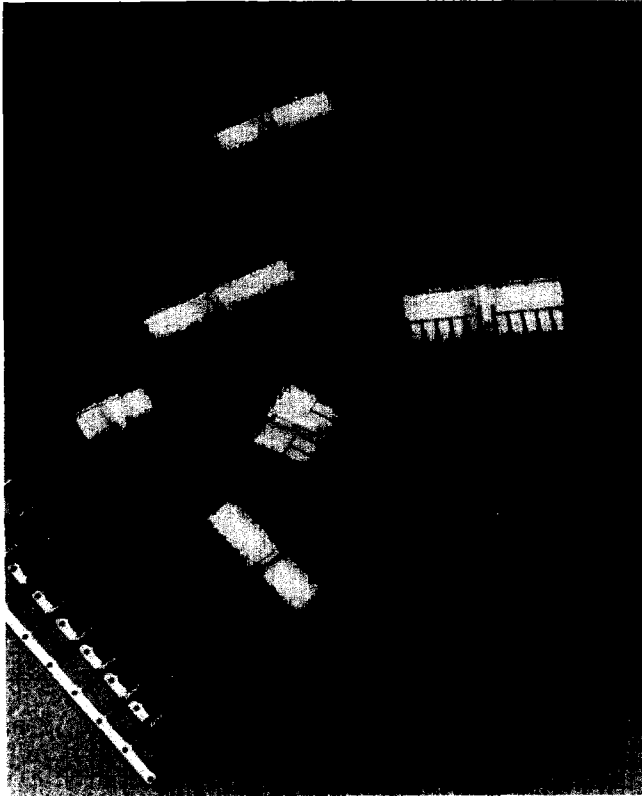


Mini-Power Latch Receptacles and Headers



Features

- .165" centers multi-pin
- Multiple point contact
- Positive housing lock
- Plastic towers on housing surrounding mating half of terminals and pins
- Header composed of high temperature plastic
- Header Board Mount Retention Options

Benefits

- Higher density power connector
- Reduced thermal effects in power applications
- Higher current, more reliable interconnect, and lower engagement force
- Assured interconnection
- Fully isolated terminals and additional polarization
- Compatible with reflow solder processes
- Design flexibility

Specifications

Electrical

Current Rating: 7 AMPS, 10 Circuits
6 AMPS, 18 - 22 Circuits

Voltage Rating: 600 VDC or VAC RMS

Operating Temperature: -40°C to +105°C

Temperature Rise: 20°C at rated current max.

Contact Resistance: 10 milliohms max., initial

Insulation Resistance: 1000 megohms min. at 500 VDC between adjacent terminals

Dielectric Withstanding Voltage: 1500 VAC between adjacent terminals

Mechanical

Mating Force/Circuit: 1.54 lbs./contact max. initial

Unmating Force/Circuit: .11 lbs./contact min. initial

Durability: 30 cycles of mating & unmating

Vibration: 1 microsecond of discontinuity max.

Pin Retention: 2 lbs. min.

Contact Retention: 5 lbs. min.

Crimp Strength:

16 AWG,	30 lbs. min.
18 AWG,	20 lbs. min.
20 AWG,	15 lbs. min.
22 AWG,	10 lbs. min.
24 AWG,	8 lbs. min.
26 AWG,	5 lbs. min.
28 AWG,	4 lbs. min.

Terminal Material: Copper alloy with tin plate, selective gold plating, or gold overall plating

Receptacle Insulator Material: Nylon 6/6, UL 94V-0

Header Insulator Material: PCT. UL 94V-0

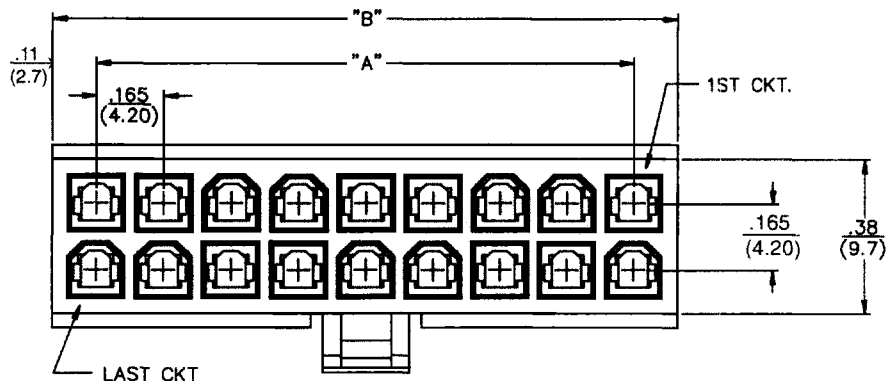
Pin Material: Copper alloy with tin plate or gold overall plating

Agency Approvals: UL Component Recognition File E48567

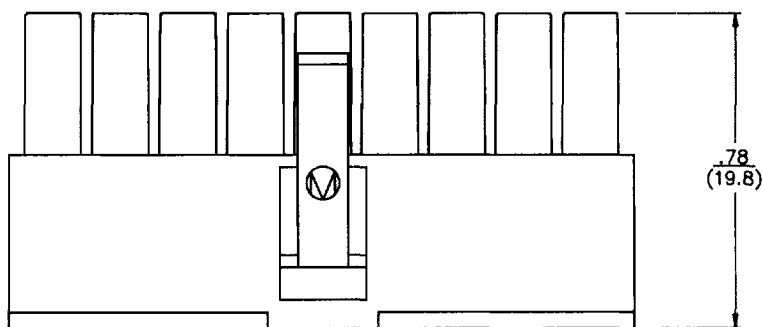
Mini-Power Latch Receptacles



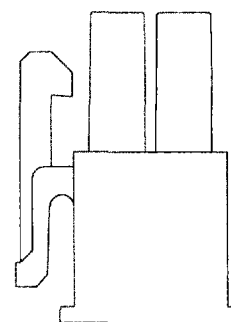
Dual Row Style



TOP VIEW

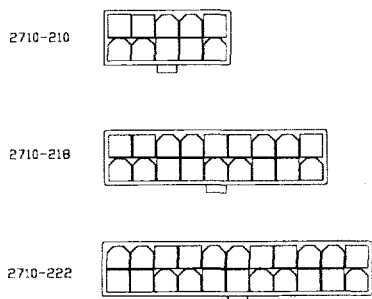


FRONT VIEW



END VIEW

Note: Contact Factory for Availability



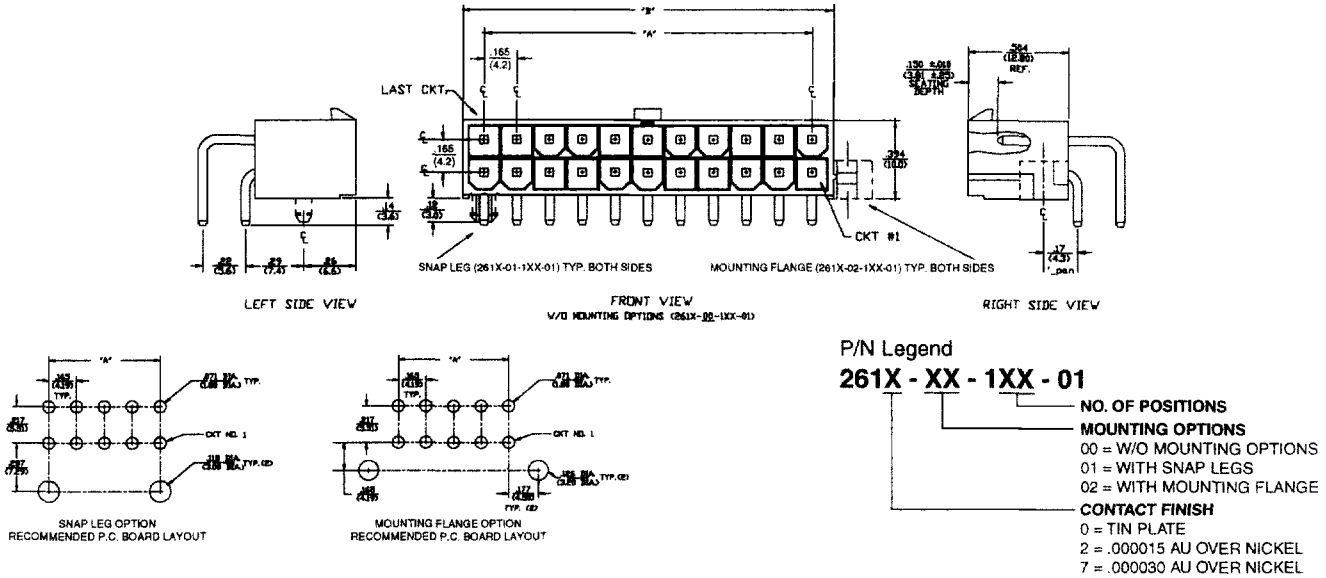
Part No.	No. of Circuits	Dim "A" ±.005	Dim "B" ±.010
2710-210	10	.66 (16.8)	.87 (22.1)
2710-218	18	1.32 (33.5)	1.54 (39.1)
2710-222	22	1.65 (41.9)	1.87 (47.5)

ALL DIMENSIONS ARE IN INCHES
DIMENSIONS IN () ARE IN MILLIMETERS

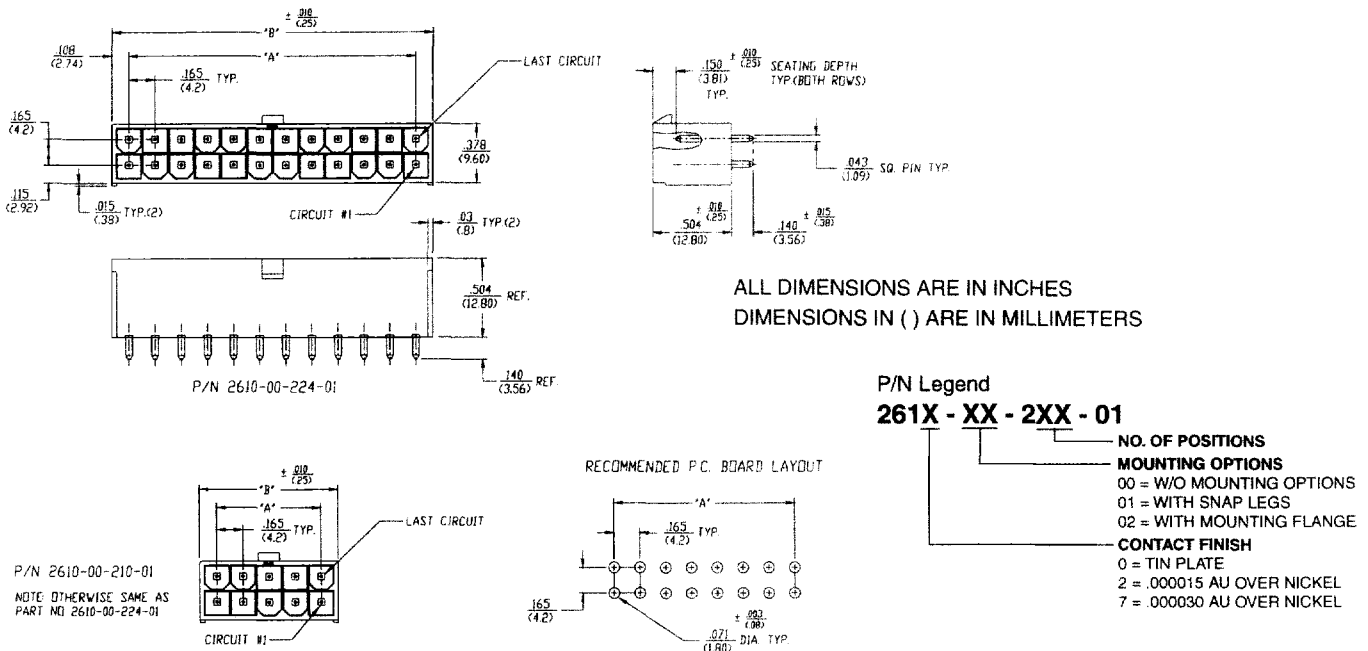
Mini-Power Latch Headers



Horizontal Mount - Dual Row Style



Vertical Mount - Dual Row Style



Vertical Part Number	Horizontal Part Number	No. of Circuits	Dim "A" ± .005	Dim "B" ± .010
261X-00-210-01	261X-00-110-01	10	.66 (16.8)	.87 (22.1)
261X-0X-218-01	261X-0X-118-01	18	1.32 (33.5)	1.54 (39.1)
261X-0X-222-01	261X-0X-122-01	22	1.65 (41.9)	1.87 (47.5)
261X-00-224-01	261X-00-124-01	24	1.85 (46.1)	2.03 (51.6)

Note: 10 and 24 circuit available without mounting options only.

