

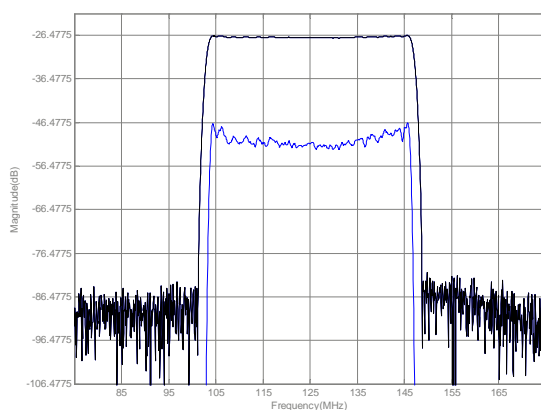


## LBN12501 SAW Filter Electrical Characteristic

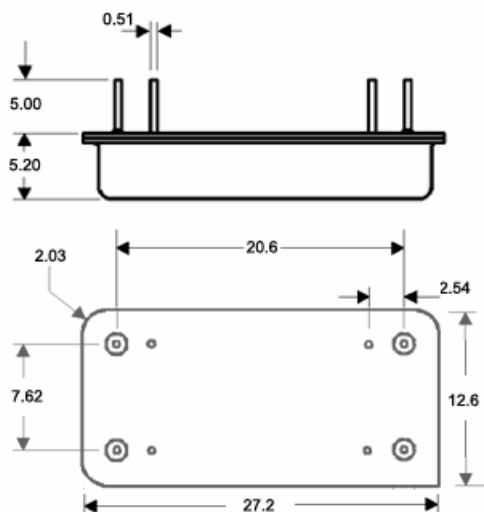
### Specifications

Parameter	Unit	Minimum	Typical	Maximum
<b>Center Frequency</b>	MHz	125.075	125.175	125.275
<b>Insertion Loss</b>	dB	-	26.4	27
<b>1 dB Bandwidth</b>	MHz	42.5	42.69	-
<b>3 dB Bandwidth</b>	MHz	43	43.57	-
<b>40 dB Bandwidth</b>	MHz	-	46.94	50
<b>50 dB Bandwidth</b>	MHz	-	47.27	-
<b>Passband Variation</b>	dB	-	0.6	1.0
<b>Absolute Delay</b>	usec	-	1.16	3
<b>Ultimate Rejection</b>	dB	50	55	-
<b>Substrate Material</b>		128 LiNbO3		
<b>Ambient Temperature</b>	°C	25		
<b>Package Size</b>		DIP2712 (27.2x12.7x5.2mm <sup>3</sup> )		

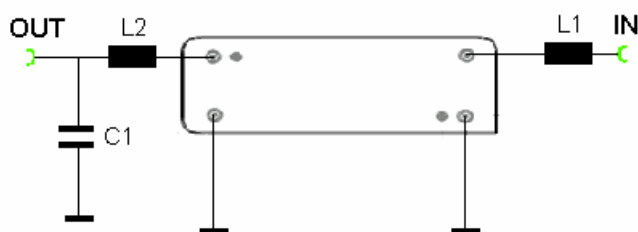
### Typical Performance



### Package Outline



### Matching Configuration



L1=82nH L2=68nH C1=36pF

Source/Load Impedance=50 ohm

Notes - Component values may change depending on board layout.