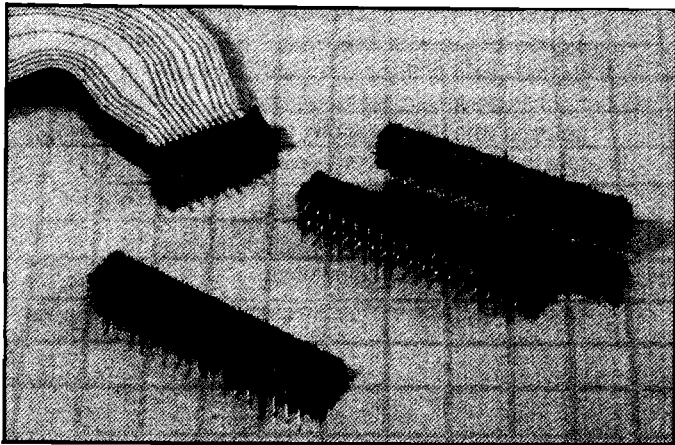


# .049" (1.25mm) LIF Flat Flex Connector



Methode's low profile flat flex connector for closer package densities is designed for use with .004"/.014" thick flat conductor, flat cable, flexible circuitry or flexible printed circuitry. This connector features kinked solder tails for board retention and a staggered mating point to reduce insertion force. This connector is available in vertical and right angle configurations and allows FFC/FPC solder traces to be conductor up or conductor down due to the double face contact design.

**Insulator Material:** High temperature thermoplastic UL 94V-0

**Contacts:** Phosphor bronze  
Tin/plating

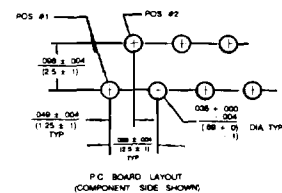
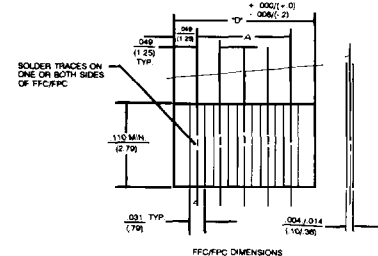
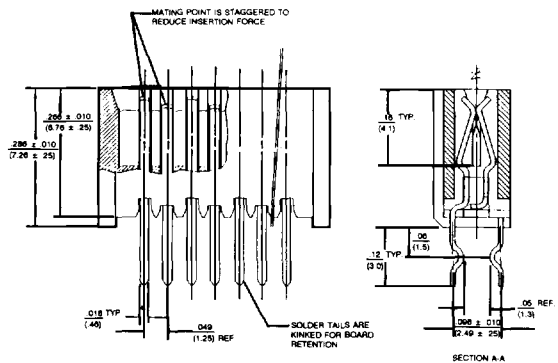
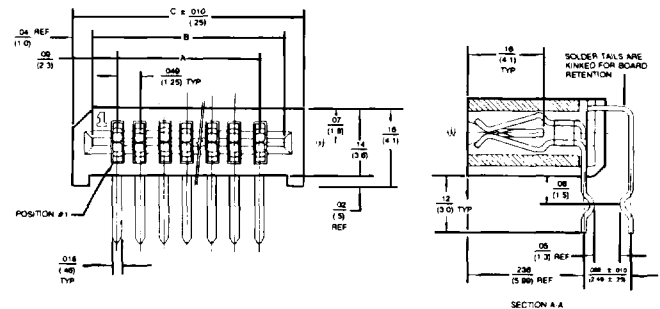
### PART NUMBER CODING

8200 - 1XX - 10X

**MOUNTING STYLE**

- 1 = VERTICAL
- 2 = RIGHT ANGLE

**NO. OF POSITIONS**  
3 - 34



PART NO.	NO. OF POS.	DIM. A	DIM. B	DIM. C	DIM. D
8200-103-10X	3	098 (2.50)	202 (5.13)	282 (9.16)	197 (5.00)
8200-104-10X	4	148 (3.75)	252 (6.40)	332 (8.43)	246 (6.25)
8200-105-10X	5	197 (5.00)	301 (7.64)	381 (9.68)	295 (7.50)
8200-106-10X	6	246 (6.25)	350 (8.89)	430 (10.92)	344 (8.75)
8200-107-10X	7	294 (7.50)	399 (10.14)	479 (12.17)	394 (10.00)
8200-108-10X	8	344 (8.75)	448 (11.38)	528 (13.41)	443 (11.25)
8200-109-10X	9	394 (10.00)	498 (12.65)	578 (14.68)	492 (12.50)
8200-110-10X	10	443 (11.25)	547 (13.89)	627 (15.93)	541 (13.75)
8200-111-10X	11	492 (12.50)	596 (15.14)	676 (17.17)	591 (15.00)
8200-112-10X	12	541 (13.75)	645 (16.38)	725 (18.42)	640 (16.25)
8200-113-10X	13	591 (15.00)	695 (17.65)	775 (19.60)	689 (17.50)
8200-114-10X	14	640 (16.25)	744 (18.90)	824 (20.93)	738 (18.75)
8200-115-10X	15	689 (17.50)	793 (20.14)	873 (22.17)	787 (20.00)
8200-116-10X	16	738 (18.75)	842 (21.39)	922 (23.42)	837 (21.25)
8200-117-10X	17	787 (20.00)	891 (22.63)	971 (24.66)	886 (22.50)
8200-118-10X	18	837 (21.25)	941 (23.90)	1021 (25.93)	935 (23.75)
8200-119-10X	19	886 (22.50)	990 (25.15)	1070 (27.18)	984 (25.00)
8200-120-10X	20	935 (23.75)	1039 (26.39)	1119 (28.42)	1033 (26.25)
8200-121-10X	21	984 (25.00)	1088 (27.64)	1168 (29.67)	1083 (27.50)
8200-122-10X	22	1034 (26.25)	1138 (28.90)	1218 (30.94)	1132 (28.75)
8200-123-10X	23	1083 (27.50)	1187 (30.15)	1267 (32.18)	1181 (30.00)
8200-124-10X	24	1132 (28.75)	1236 (31.39)	1316 (33.43)	1230 (31.25)
8200-125-10X	25	1181 (30.00)	1285 (32.64)	1365 (34.67)	1280 (32.50)
8200-126-10X	26	1230 (31.25)	1334 (33.88)	1414 (35.92)	1329 (33.75)
8200-127-10X	27	1280 (32.50)	1384 (35.15)	1464 (37.19)	1378 (35.00)
8200-128-10X	28	1329 (33.75)	1433 (36.40)	1513 (38.43)	1427 (36.25)
8200-129-10X	29	1378 (35.00)	1482 (37.64)	1562 (39.68)	1476 (37.50)
8200-130-10X	30	1427 (36.25)	1531 (38.89)	1611 (40.92)	1526 (38.75)
8200-131-10X	31	1476 (37.50)	1580 (40.13)	1660 (42.16)	1575 (40.00)
8200-132-10X	32	1526 (38.75)	1630 (41.40)	1710 (43.43)	1624 (41.25)
8200-133-10X	33	1575 (40.00)	1679 (42.65)	1759 (44.68)	1673 (42.50)
8200-134-10X	34	1624 (41.25)	1728 (43.89)	1808 (45.92)	1722 (43.75)