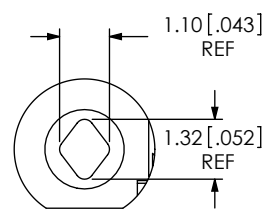
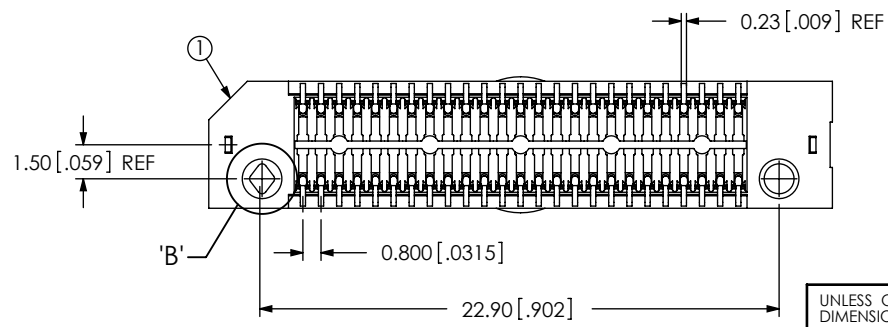
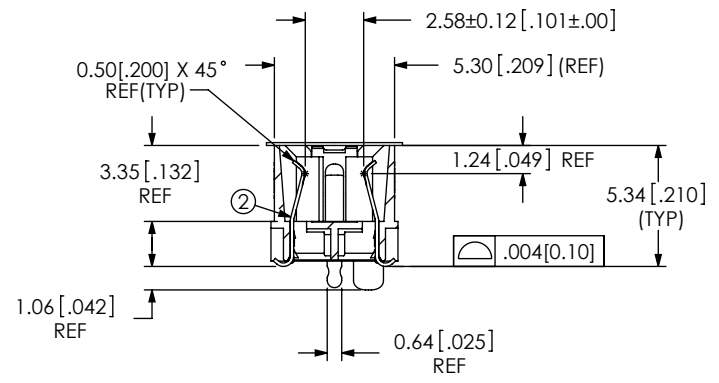
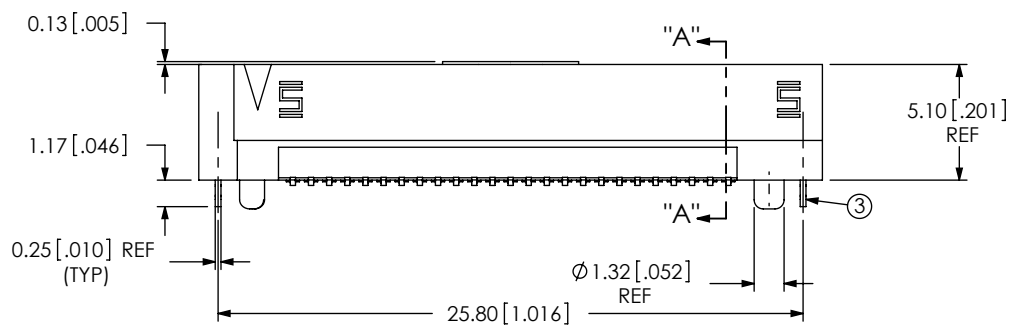
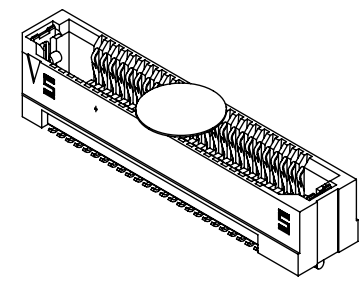
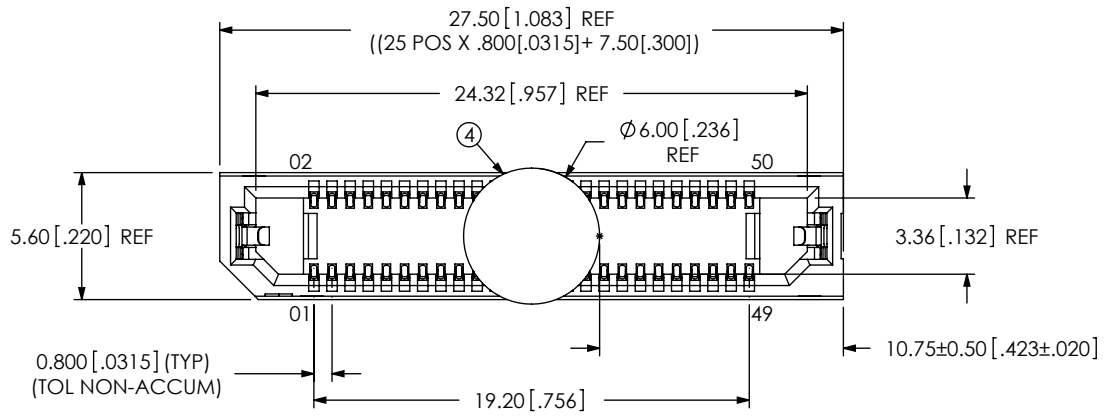


NOTES:

1. SET UP ASP PART NUMBER FOR INDUSTRY STANDARD.
2. REPRESENTS A CRITICAL DIMENSION.
3. MAXIMUM BURR ALLOWANCE: 0.015[0.038]
4. MINIMUM PUSHOUT FORCE: .5 LB
5. PARTS TO BE PACKAGED IN TAPE AND REEL.
6. FOR QUANTITIES UP TO 49 PEICES, NO LEADER, TRAILOR, OR EIA-481-D REEL WILL BE SUPPLIED. FOR QUANTITIES OF 50-124 PIECES, NO LEADER OR TRAILOR WILL BE SUPPLIED.

DO NOT SCALE FROM THIS PRINT

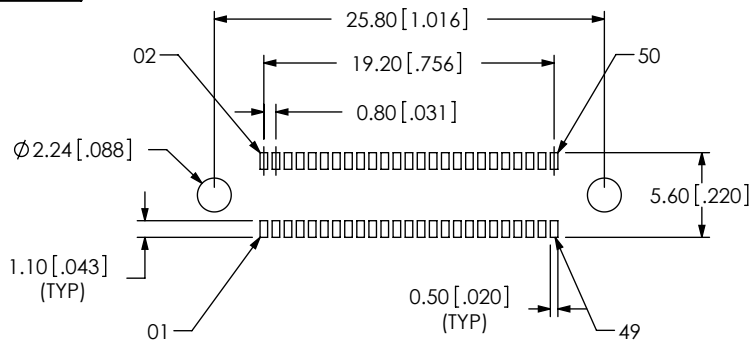


BY SIGNING THIS DOCUMENT YOU ARE ACCEPTING THE CONDITIONS SET WITHIN. YOUR REQUIREMENTS MUST BE LISTED WITHIN THIS DRAWING. WHERE NO DIRECTION FROM THE CUSTOMER IS IDENTIFIED SAMTEC'S PROCESS REQUIREMENTS WILL BE USED.

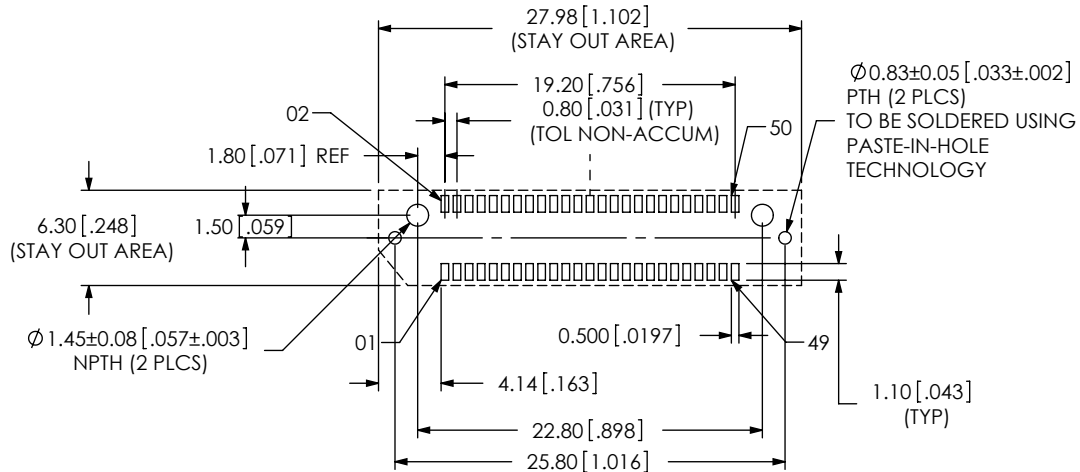
DATE: _____
 COMPANY: _____
 CUSTOMER SIGNATURE: _____
 PRINTED NAME: _____
 PHONE NO: _____
 EXCEPTIONS: _____

UNLESS OTHERWISE SPECIFIED, DIMENSIONS ARE IN MILLIMETERS TOLERANCES ARE: DECIMALS .XX: ±.3[.01] .XXX: ±.13[.005] .XXXX: ±.051[.0020]	PROPRIETARY NOTE THIS DOCUMENT CONTAINS INFORMATION CONFIDENTIAL AND PROPRIETARY TO SAMTEC, INC. AND SHALL NOT BE REPRODUCED OR TRANSFERRED TO OTHER DOCUMENTS OR DISCLOSED TO OTHERS OR USED FOR ANY PURPOSE OTHER THAN THAT WHICH IT WAS OBTAINED WITHOUT THE EXPRESSED WRITTEN CONSENT OF SAMTEC, INC.	<p>520 PARK EAST BLVD, NEW ALBANY, IN 47150 PHONE: 812-944-6733 FAX: 812-948-5047 e-Mail: info@SAMTEC.com code 55322</p>
PLATING: CONTACTS: CONTACT AREA: .000030 GOLD OVER .000050 NICKEL REMAINDER: .000200 REF TIN OVER .000050 NICKEL WELD TAB: .000003 GOLD OVER .000050 NICKEL	DESCRIPTION: .8MM EDGE RATE SOCKET ASM	DWG. NO. ASP-148422-01
F:\DWG\MISC\MKTG\ASP-148422-01-MKT.SLDDRW	BY: TAMMY W. 06/12/09	SHEET 1 OF 2

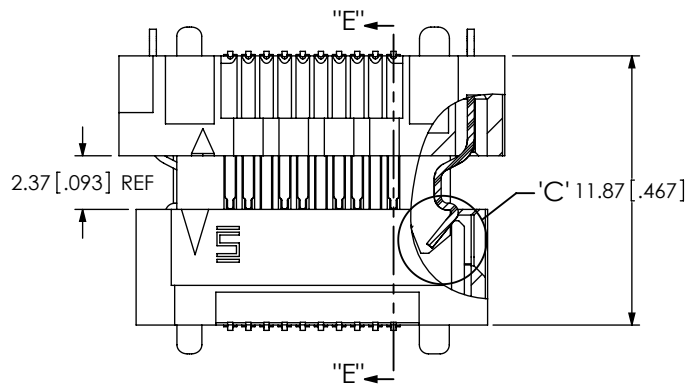
ITEM NO.	PART NUMBER	QUANTITY	MATERIAL
1	ERF8-025-05.0-DV-L	1.0000	VECTRA E130i, COLOR: BLACK
2	C-211-05.0-S	50.000	BeCu, ALLOY 390 HT
3	WT-30-01-F	2.0000	BeCu, #25, 1/2 HT
4	K-500-300	1.0000	POLYIMIDE FILM
5	CT-ERF8016MS	1.0000	CONDUCTIVE POLYMER



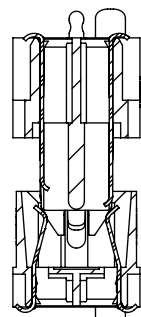
RECOMMENDED STENCIL LAYOUT



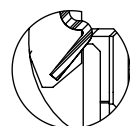
RECOMMENDED PCB LAYOUT



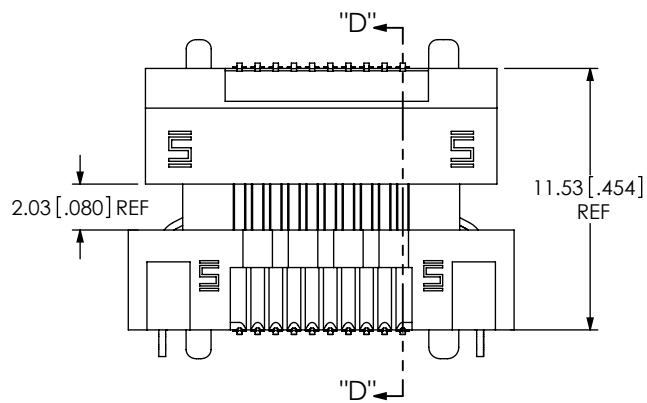
LATCH ENGAGING VIEW



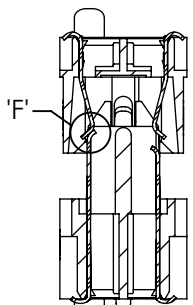
SECTION "E"-"E"
SCALE 3 : 1



DETAIL 'C'



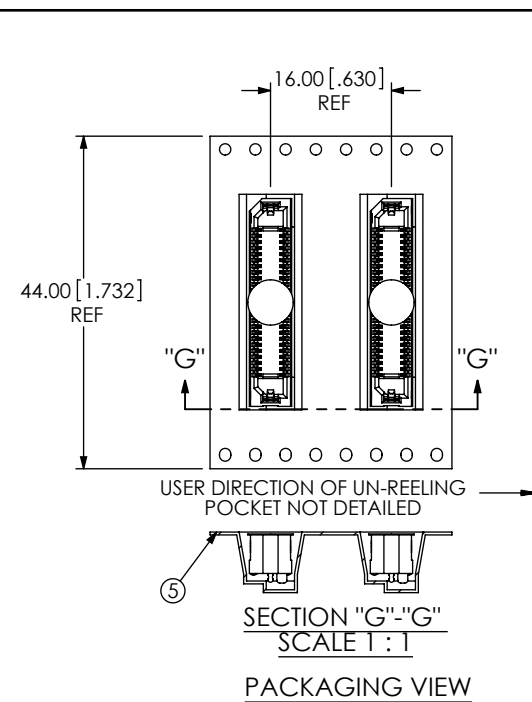
PIN ENGAGING VIEW



SECTION "D"-"D"
SCALE 3 : 1



DETAIL 'F'
SCALE 8 : 1



SECTION "G"-"G"
SCALE 1 : 1

PACKAGING VIEW

PROPRIETARY NOTE

THIS DOCUMENT CONTAINS INFORMATION CONFIDENTIAL AND PROPRIETARY TO SAMTEC, INC. AND SHALL NOT BE REPRODUCED OR TRANSFERRED TO OTHER DOCUMENTS OR DISCLOSED TO OTHERS OR USED FOR ANY PURPOSE OTHER THAN THAT WHICH IT WAS OBTAINED WITHOUT THE EXPRESSED WRITTEN CONSENT OF SAMTEC, INC.

SHEET SCALE: 4:1

samtec

520 PARK EAST BLVD., NEW ALBANY, IN 47150
PHONE: 812-944-6733 FAX: 812-948-5047
e-Mail: info@SAMTEC.com code 53322

DESCRIPTION:
.8MM EDGE RATE SOCKET ASM

DWG. NO.
ASP-148422-01

BY: TAMMY W. 06/12/09

SHEET 2 OF 2