

GK \neq H7 < \neq B; '8]cXYg

SOD-523

• Applications

High speed switching

• Features

- 1) Extremely small surface mounting type.
- 2) High Speed.
- 3) High reliability.

• Construction

Silicon epitaxial planar

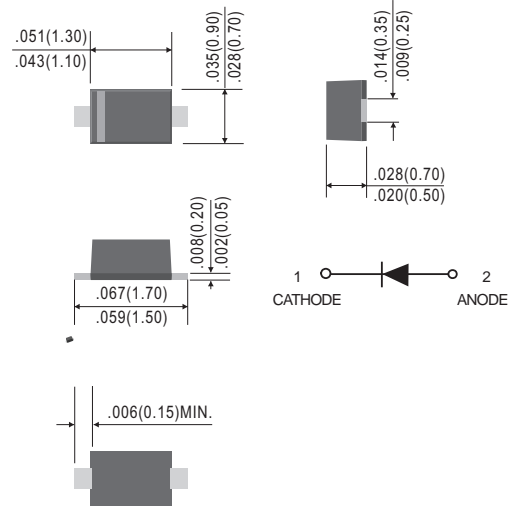
ORDRING INFORMATION

Device	Marking	Shipping
1SS400-TG	A	3000/Tape&Reel

Pb-Free package is available

RoHS product for packing code suffix "G"

Halogen free product for packing code suffix "H"



Dimensions in inches and (Millimeters)

Maximum Ratings and Electrical Characteristics, Single Diode @T_A=25

Parameter	Symbol	Limits	Unit
Peak reverse voltage	V _{RM}	90	V
DC reverse voltage	V _R	80	V
Peak forward current	I _{FM}	225	mA
Mean rectifying current	I _O	100	mA
Surge current (1s)	I _{surge}	500	mA
Junction temperature	T _j	125	
Storage temperature	T _{stg}	-55~+125	

Electrical Ratings @T_A=25

Parameter	Symbol	Min.	Typ.	Max.	Unit	Conditions
Forward voltage	V _F			1.2	V	I _F =100mA
Reverse current	I _R			0.1	μ A	V _R =80V
Capacitance between terminals	C _T			3.0	pF	V _R =0.5V,f=1MHZ
Reverse recovery time	t _{rr}			4	ns	V _R =6V,I _F =10mA,R _L =100



ELECTRICAL CHARACTERISTIC CURVES

($T_a = 25^\circ\text{C}$)

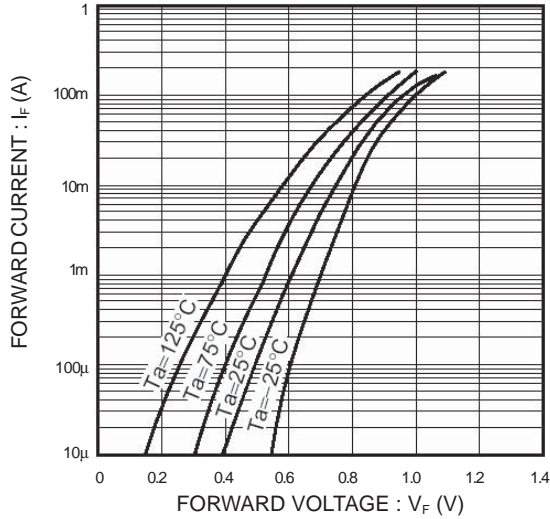


Fig.1 Forward characteristics

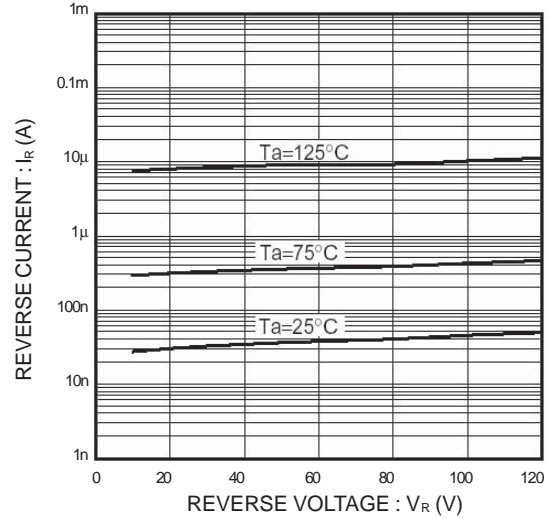


Fig.2 Reverse characteristics

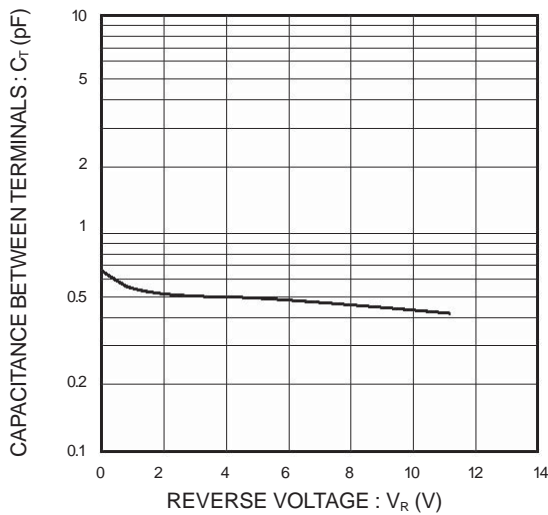


Fig.3 Capacitance between terminals

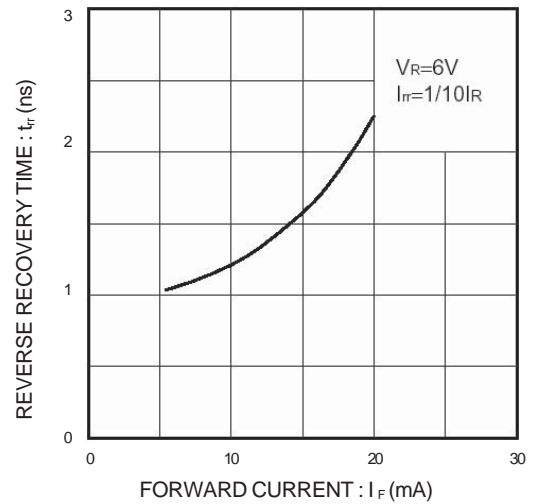


Fig.4 Reverse recovery time characteristics

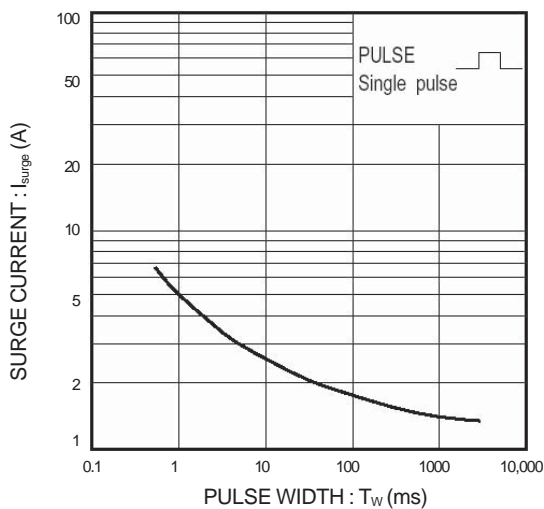


Fig.5 Surge current characteristics

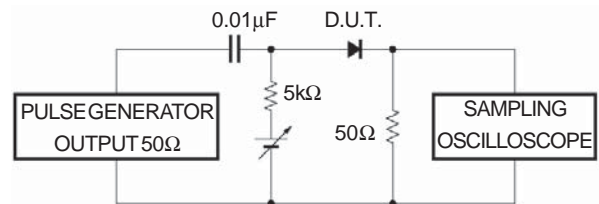


Fig.6 Reverse recovery time (t_{rr}) measurement circuit