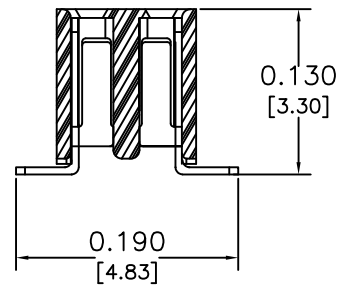
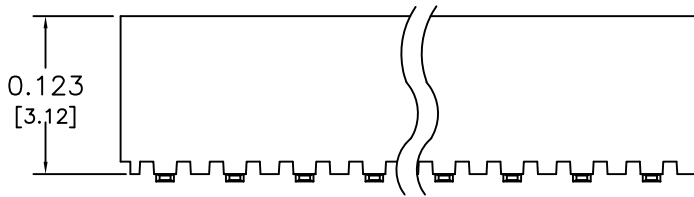
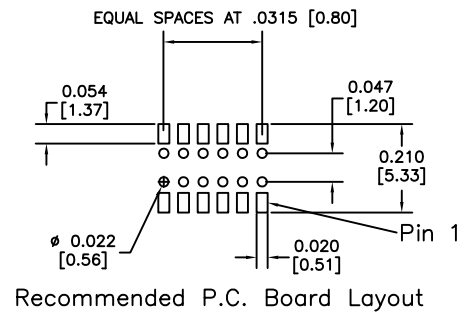
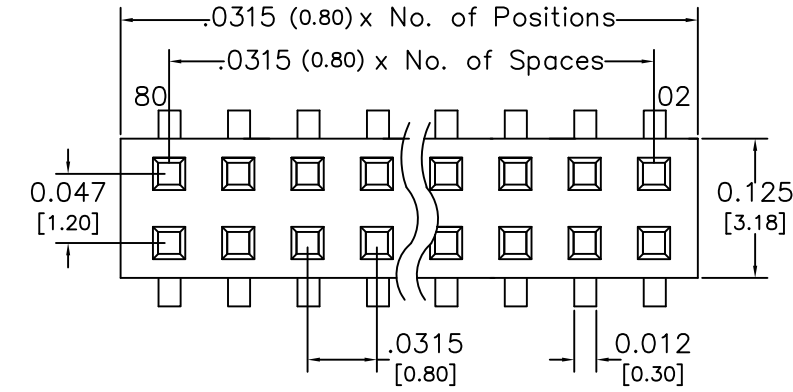


Major League Electronics .0315 cl Socket Strip - Surface Mount - Vertical



Tails may be clipped to achieve desired pin length

Ordering Information

SMSS-8 - D - 06 - - - - - LF

Pins Per Row
01 - 40

Row Specification
D = Dual Row

Surface Mount

Lead Free

Packing Information

TR-P = Tape and Reel with Plastic Pick and Place pad

TB-P = Tube with Plastic Pick and Place pad

TB-0 = Tube without Pick and Place Pad

If left blank, packaging at MLE's discretion

Pad may be metal, mylar or plastic

Plating Options	
- 10µ Gold on Contact area/Flash on Tails	G
- Gold Flash Over Entire Pin	F
- Matte Tin all Over	T

Polarized Position

Leave blank if not needed

If required, specify empty pin position, e.g. 012 for Pin 12

Specifications

Current Rating: 1.0 Ampere

Insulation Resistance: 1000MΩ Min.

Dielectric Withstanding: 500V AC

Contact Resistance: 30 mΩ Max.

Operating Temperature: -40°C to + 105°C

Max. Process Temperature:

Peak: 260°C up to 10 secs.

Process: 230°C up to 60 secs.

Wave: 260°C up to 6 secs.

Reflow: 260°C up to 10 secs.

Manual Solder: 350°C up to 5 secs.

Materials

Contact Material: Phosphor Bronze

Insulator Material: Nylon 6T

Products cut to specific sizes are uncancellable/nonreturnable

Parts are subject to change without notice

SMSS-8-D-06 SERIES

Socket Strip - Vertical - Dual Entry

12 FEB 07

Scale
NTS

UNLESS OTHERWISE SPECIFIED
DIMENSIONS IN INCHES (MM)
TOLERANCES ARE:

ONE PLACE DECIMALS ±.100
TWO PLACE DECIMALS ±.010
THREE PLACE DECIMALS ±.005
FOUR PLACE DECIMALS ±.0020

ANGLES
±.5°



4235 Earnings Way, New Albany, Indiana, 47150, USA

1-800-782-3486 (USA/Canada/Mexico)

Tel: 812-944-7244

Fax: 812-944-7268

E-mail: mle@mlelectronics.com

Web: www.mlelectronics.com

Revision
C

Sheet
1/2

Revisions

Revision B - (20th Mar 2008)

Amendment to packing options in ordering grid:

Revision A

TR-P = Tape and Reel with Plastic Pick and Place pad
TR-M = Tape and Reel with Metal Pick and Place pad
TR-K = Tape and Reel with Kapton Tape Pick and Place pad
TB-P = Tube with Plastic Pick and Place pad
TB-M = Tube with Metal Pick and Place pad
TB-K = Tube with Kapton Tape Pick and Place pad
TB-0 = Tube without Pick and Place Pad
BK-0 = Bulk without Pick and Place Pad

Revision B

TR-P = Tape and Reel with Plastic Pick and Place pad
TB-P = Tube with Plastic Pick and Place pad
TB-0 = Tube without Pick and Place Pad
*If left blank, packaging at MLE's discretion
Pad may be metal, mylar or plastic*

Revision C - (17th Mar 2011)

Amendment to plating options:

Revision B

GT = 10 μ Gold on Contact Area / Matte Tin on Tail

Revision C

G - 10 μ Gold on Contact area/Flash on Tails
F - Gold Flash Over Entire Pin
T - Matte Tin all Over

SMSS-8-D-06 SERIES

Socket Strip - Vertical - Dual Entry

12 FEB 07

Scale
NTS

UNLESS OTHERWISE SPECIFIED
DIMENSIONS IN INCHES (MM)
TOLERANCES ARE:

ONE PLACE DECIMALS \pm .100
TWO PLACE DECIMALS \pm .010
THREE PLACE DECIMALS \pm .005
FOUR PLACE DECIMALS \pm .0020

ANGLES
 \pm 5°



4235 Earnings Way, New Albany, Indiana, 47150, USA
1-800-782-3486 (USA/Canada/Mexico)
Tel: 812-944-7244
Fax: 812-944-7268
E-mail: mle@mlelectronics.com
Web: www.mlelectronics.com

Revision
C

Sheet
2/2