

FEATURES AND SPECIFICATIONS

Features and Benefits

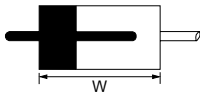
- Sizes 2 and 6 circuits
- Panel mount type
- Inner positive lock provides easy attachment and secure mating retention
- One-piece locking ears provide good spring characteristics and secure panel retention

Reference Information

Packaging: Bag
 Mates With: [51138](#)
 Use With: [50599](#) and 50600
 Applicable Retainer: [51140](#)
 Designed In: Millimeters

Mating Dimensions

51139/50599 or 50600
 51138/50597 or 50598/51140
 W=41.8mm



Electrical

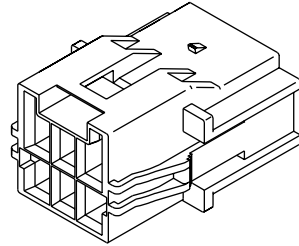
Voltage: 600V
 Current: 9.0A
 Contact Resistance: 10mΩ max.
 Dielectric Withstanding Voltage: 1500V AC/1 min.
 Insulation Resistance: 1000 MΩ min.

Physical

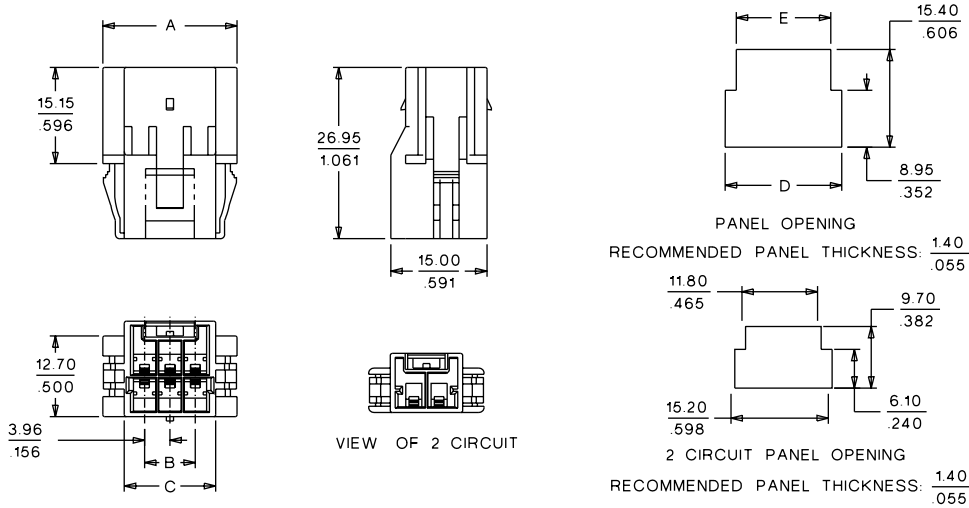
Housing: PBTP, UL 94V-0
 Operating Temperature: -40 to +105°C

molex® 3.96mm (.156") Pitch Wire-to-Wire Plug

51139 Dual Row



CATALOG DRAWING (FOR REFERENCE ONLY)



ORDERING INFORMATION AND DIMENSIONS

| Circuits | Order No. | Dimension | | | | | | |
|----------|------------|--------------|-------------|--------------|--------------|--------------|--------------|-------------|
| | | A | B | C | D | E | F | G |
| 2 | 51139-0200 | 18.00 (.709) | 3.96 (.156) | 18.00 (.709) | 15.20 (.598) | 11.80 (.465) | 9.70 (.382) | 6.10 (.240) |
| 6 | 51139-0600 | 20.96 (.825) | 7.92 (.312) | 20.96 (.825) | 18.16 (.715) | 14.76 (.581) | 15.40 (.606) | 8.95 (.352) |