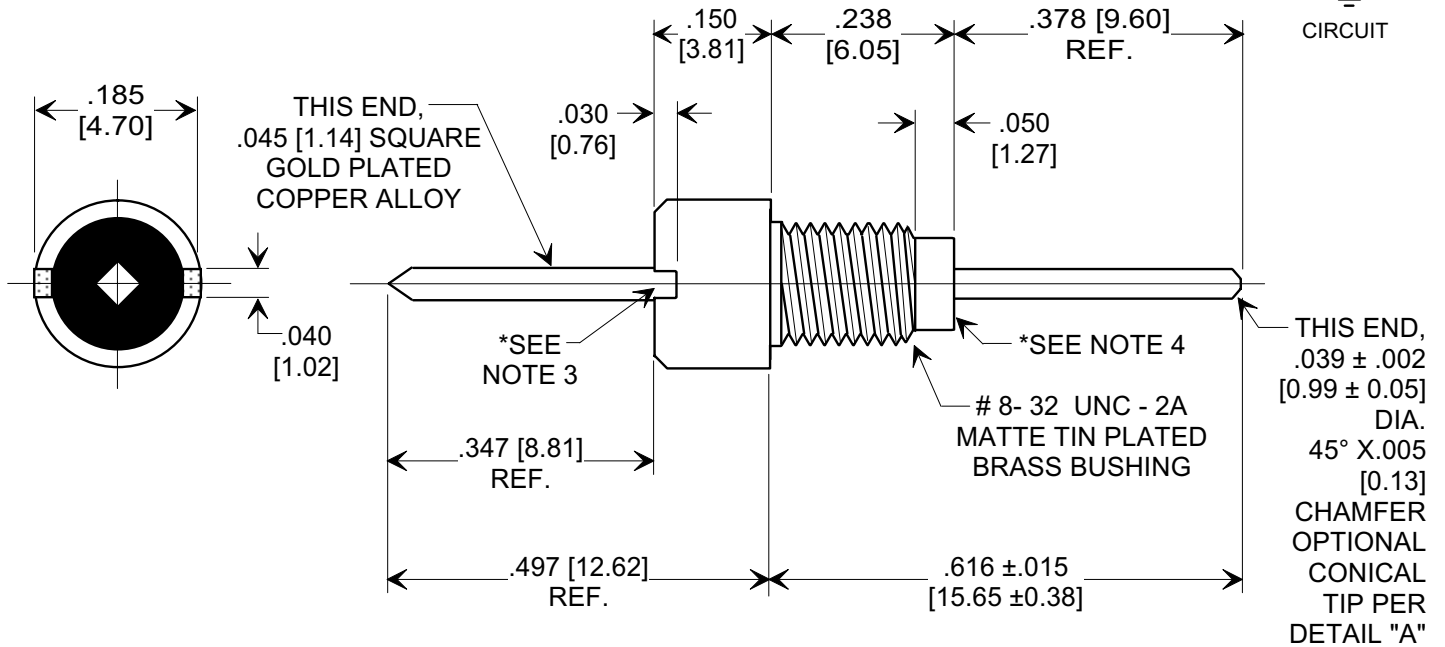
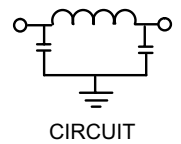
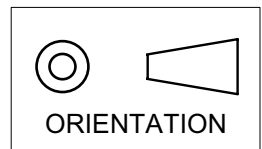


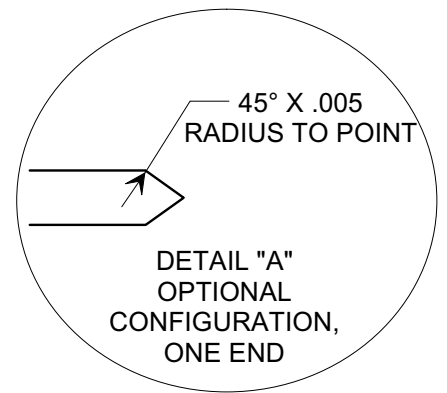
**MARKETING SALES DRAWING**  
**DIMENSIONS IN INCHES - DO NOT SCALE THIS DRAWING**  
**DIMENSIONS IN METRIC - [ ]**

Electrical Testing  
per Tusonix standard  
test plans and Mil-Std-202  
Test Methods.



**NOTES:**

1. OPERATING TEMPERATURE RANGE: -55°C TO +125°C.
2. MAX. RECOMMENDED SOLDERING TEMPERATURE: 260°C. SEE INSTALLATION RECOMMENDATIONS.
- \*3. UNDERFILL EPOXY THIS CAVITY. POTTING MUST BE BELOW LEVEL OF .030 BUSHING SLOT.
- \*4. UNDERFILL EPOXY THIS CAVITY. POTTING MUST NOT EXTEND OUTSIDE OF BUSHING.
5. NO MARKING REQUIRED FOR STANDARD PART. GREEN DOT/MARK ADDED FOR RoHS PART.
6. TUSONIX STANDARD PART NUMBER: 4201-609. TUSONIX RoHS COMPLIANT PART NUMBER: 4201-609 LF. CUSTOMER MUST SPECIFY STANDARD OR RoHS PART NUMBER WHEN ORDERING.
7. SUPPLIED SILVER PLATED HEX NUT AND LOCKWASHER.



CAP.(pf)	TOL.	DC WORKING VOLTAGE		CURRENT (AMPS)	MINIMUM NO LOAD INSERTION LOSS (dB) AT 25°C PER MIL-STD-220				
		85 °C	125 °C		DC	1 MHz	10 MHz	100 MHz	1 GHz
1000	GMV	200	100	15	---	4	37	60	---

X-2015 Rev-0 REVISION RECORD Original Release C.O. 20060302-2-02 0	--TOLERANCES-- Unless Otherwise Specified		Title <b>BUSHING STYLE EMI FILTER</b>	
	DECIMAL ± .005 [0.13]		Drawn L.E. 03-27-06	Scale 4 X
	ANGLES ±		Approved B.Mc. 03-27-06	
	<b>TUSONIX</b> TUCSON, ARIZONA		<b>A</b>	<b>4201-609</b>