



# TAI-SAW TECHNOLOGY CO., LTD.

No. 3, Industrial 2nd Rd., Ping-Chen Industrial District,  
Taoyuan, 324, Taiwan, R.O.C.

TEL: 886-3-4690038 FAX: 886-3-4697532

E-mail: [tstsales@mail.taisaw.com](mailto:tstsales@mail.taisaw.com) Web: [www.taisaw.com](http://www.taisaw.com)

## Product Specifications Approval Sheet

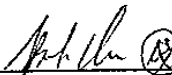
Product Description: SAW Filter 485 MHz F-11

TST Part No.: TA1128A

Customer Part No.: \_\_\_\_\_

Customer signature required
Company: _____
Division: _____
Approved by : _____
Date: _____

Checked by: \_\_\_\_\_ David Chang 張國智

Approved by: \_\_\_\_\_ Francis Chen 

Date: \_\_\_\_\_ 2009/12/04

1. Customer signed back is required before TST can proceed with sample build and receive orders.
2. Orders received without customer signed back will be regarded as agreement on the specifications.
3. Any specifications changes must be approved upon by both parties and a new revision of specifications shall be released to reflect the changes.



# TAI-SAW TECHNOLOGY CO., LTD.

No. 3, Industrial 2nd Rd., Ping-Chen Industrial District,  
Taoyuan, 324, Taiwan, R.O.C.

TEL: 886-3-4690038 FAX: 886-3-4697532

E-mail: [tstsales@mail.taisaw.com](mailto:tstsales@mail.taisaw.com) Web: [www.taisaw.com](http://www.taisaw.com)

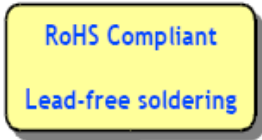
## SAW Filter 485 MHz

MODEL NO.: TA1128A

REV. NO.:1

### A. MAXIMUM RATING:

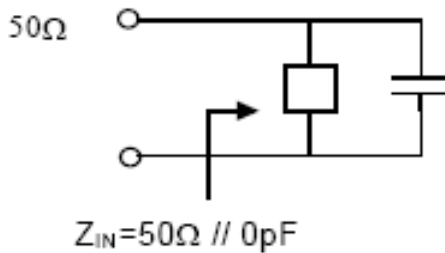
1. Input Power Level: 10 dB<sub>m</sub>
2. DC voltage: 3 V
3. Operating Temperature: -40°C to +85°C
4. Storage Temperature: -40°C to +85°C



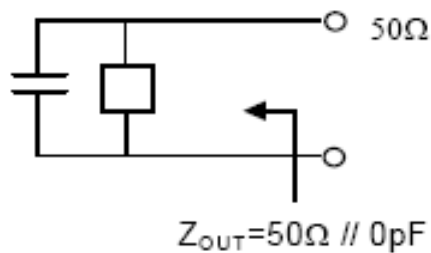
### B. ELECTRICAL CHARACTERISTICS:

Item	Unit	Min.	Type.	Max.	
Center frequency	Fc	MHz	-	485	-
Insertion Loss (480~490 MHz)	IL	dB	-	2.6	4.0
Amplitude Ripple (480~490 MHz)		dB	-	0.6	2.0
<b>Attenuation</b> (Reference level from 0 dB)					
385 ~ 445 MHz	dB	47	63	-	
525 ~ 585 MHz	dB	36	54	-	
Impedance at Fc: Input $Z_{IN} = R_{IN} // C_{IN}$ Output $Z_{out} = R_{out} // C_{out}$	$\Omega$	50 $\Omega$ //0pF			

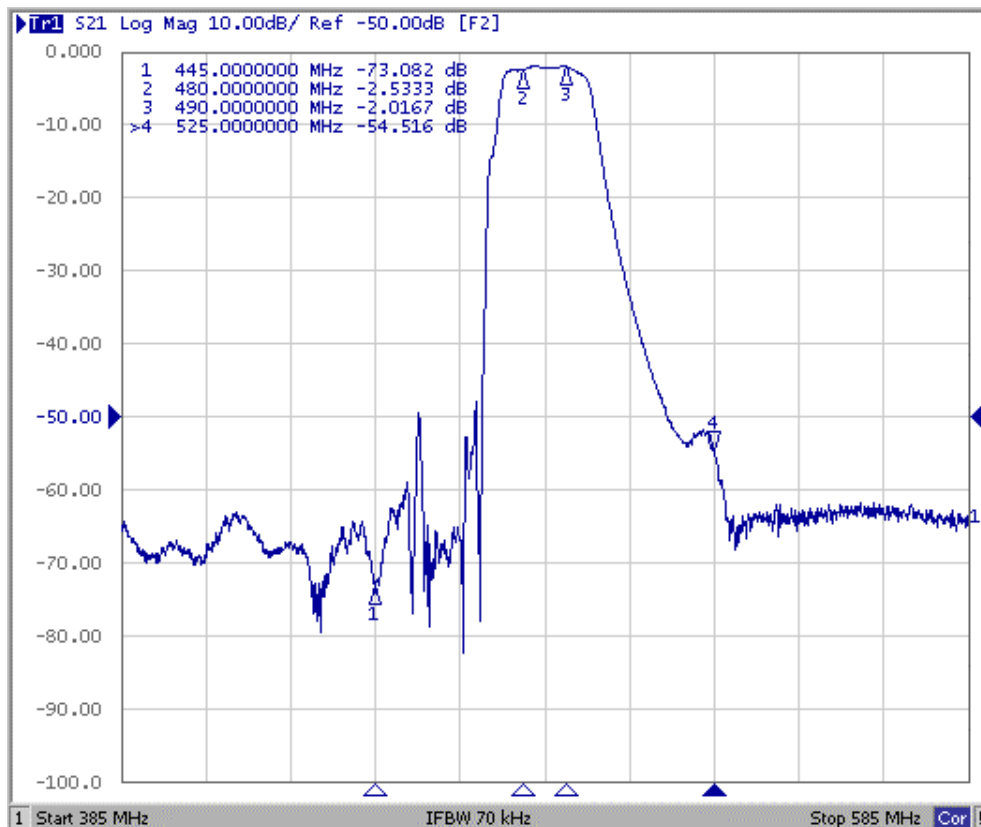
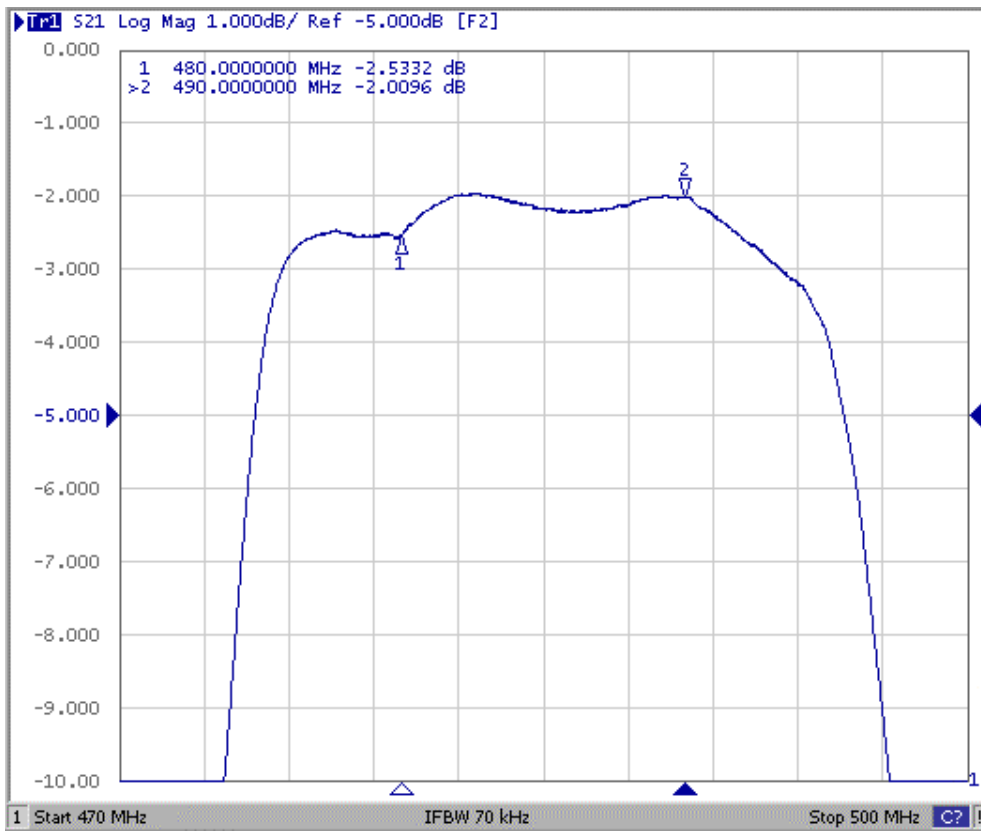
Source impedance



Load impedance

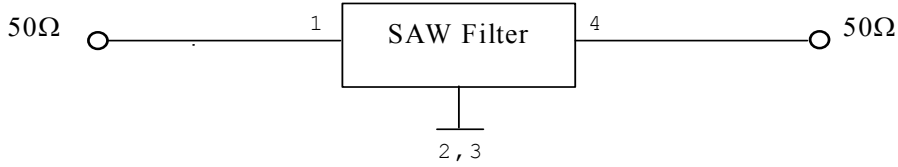


### C. Frequency Characteristics :

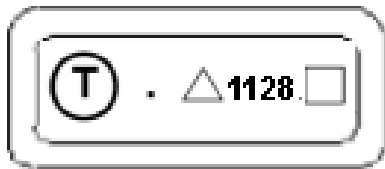
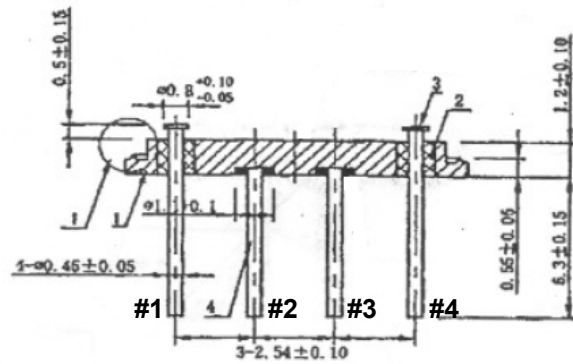
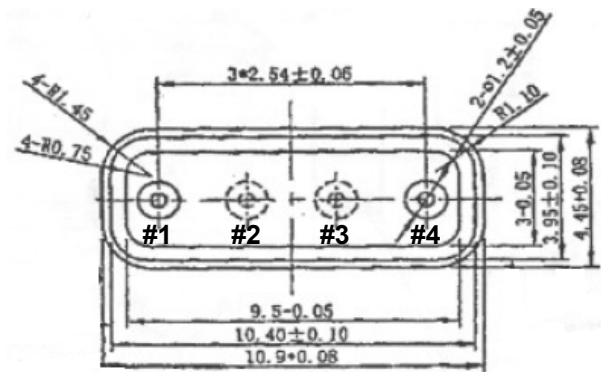


**D. MEASUREMENT CIRCUIT:**

HP Network analyzer



**E. OUTLINE DRAWING:**



- #1 : Input
- #4 : Output
- #2, #3 : Ground
- △ : Year Code
- : Date Code
- Unit : mm

△ Product Year Code

Year	2005	2006	2007	2008
	2009	2010	2011	2012
Product Code	A	a	A	a