



MAX186 Evaluation System/Evaluation Kit

General Description

The MAX186 evaluation system (EV system) consists of a MAX186 evaluation kit (EV kit) connected to a Maxim 80C32 microcontroller (μC) module. The unit connects to an IBM-compatible personal computer running software provided with the MAX186 EV kit. Both boards come fully assembled and tested.

Using the EV system, the MAX186 input multiplexer can be software-configured in a variety of single-ended or differential modes with unipolar or bipolar input ranges. The MAX186 can be evaluated with a V_{SS} voltage of 0V or -5V, selectable from the personal computer's keyboard.

The EV system is also useful for evaluating the MAX186's shutdown feature. The MAX186 can be operated in three states of readiness between conversions. There are provisions for monitoring the supply current in the different shutdown states, and for varying the delay between conversions.

Order the EV system (MAX186EVSYS-DIP) for comprehensive evaluation of the MAX186 or MAX188 using a personal computer. Order the EV kit (MAX186EVKIT-DIP) if the 80C32 module (80C32MODULE-DIP) has already been purchased with a previous Maxim EV system, or for custom use in other μC -based systems. The MAX186 EV kit can also perform limited evaluation on a stand-alone basis (see the *MAX186 EV Kit Quick Start* section).

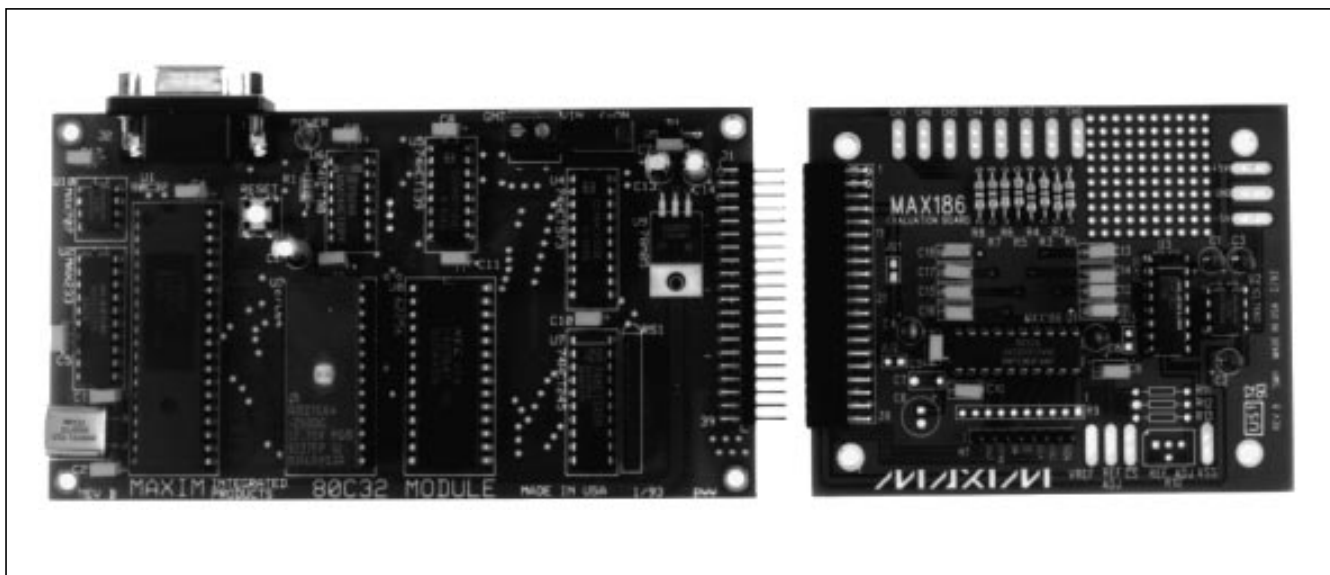
Features

- ◆ Includes EV Kit and 80C32 μC Module
- ◆ 12-Bit Resolution ADC
- ◆ Serial μC Interface
- ◆ Unipolar +4.096V or Bipolar -2.048V to +2.048V Input Ranges
- ◆ Internal Reference Voltage
- ◆ Low Supply-Current Shutdown Mode
- ◆ Source Codes for All Software Provided
- ◆ Evaluates All Operating Modes
- ◆ Proven PC Board Layout
- ◆ Prototyping Area Provided
- ◆ Digitizes 8 Analog Inputs
- ◆ Fully Assembled and Tested

Ordering Information

PART	TEMP. RANGE	BOARD TYPE
MAX186EVSYS-DIP	0°C to +70°C	Through-Hole
MAX186EVKIT-DIP	0°C to +70°C	Through-Hole
80C32MODULE-DIP	0°C to +70°C	Through-Hole

EV System



Evaluates: MAX186

MAX186 Evaluation System/Evaluation Kit

EV System Component List

QTY	DESCRIPTION
1	MAX186 evaluation kit (MAX186EVKIT-DIP)
1	80C32 μ C module (80C32MODULE-DIP)

MAX186 EV System Quick Start

The MAX186 EV system includes a Maxim 80C32 module and a MAX186 EV kit. The two connect through a 40-pin data connector on adjoining edges of the boards. The EV system then connects to an IBM-compatible computer running software provided with the MAX186 EV kit.

The personal computer and the 80C32 module are connected via a standard RS-232 serial communication port. If the serial port on the personal computer has the standard 9-pin connector, a straight through cable is used to attach the board. Systems with a 25-pin serial port connector need an adapter or adapter cable (D25 female to D9 male). Both the adapter and the cable are available at most computer supply stores.

The steps for using the MAX186 EV system are outlined as follows:

- Copy the MAX186 software disk to another disk or to a hard-disk directory in the personal computer. Store the original disk in a safe location.
- Read the README text file found on the floppy disk. It contains information on any changes to the hardware or software introduced after this manual was written.
- Connect the MAX186 evaluation board to the 40-pin data connector on the Maxim 80C32 module.
- Connect an 8V to 16V source to the 2-pin power connector on the 80C32 module. The positive lead connects to the terminal marked VIN.
- Connect a cable from the personal computer serial connector to the 9-pin RS-232 connector on the 80C32 module.
- Turn on the power to the 80C32 module. The switch is located on one edge of the board. The LED indicates power from the on-board regulator.
- To start the Maxim EV system software on the personal computer, set the default drive or directory to match the storage location of the Maxim programs, and then enter the program name "186EVKIT".

EV Kit Component List

DESIGNATION	QTY	DESCRIPTION
C1, C2, C3, C4, C8	5	10 μ F 16V radial electrolytic capacitors
C6*	1	22 μ F low-ESR radial electrolytic capacitor
C5, C7, C9, C10	4	0.1 μ F ceramic capacitors
C11-C18	8	0.01 μ F ceramic capacitors
R1-R8	8	300 Ω 5% resistors
R9*	1	10k Ω 9-resistor SIP
U1	1	Maxim MAX186DCPP
U2	1	Maxim ICL7660CPA
U3	1	Maxim DG413DJ
J1	1	Female 40-pin data connector
None	1	20-pin IC socket for U1
H1	1	8-pin header
None	1	3.00" x 3.75" PC board
None	4	Rubber feet
None	1	MAX186 EV kit software on a 5 1/4" floppy disk
None	1	MAX186 data sheet
None	1	MAX186 EV kit manual

*C6 and R9 are supplied with the kit but not mounted on the printed circuit board.

- Review the complete list of available commands, found in the menu at the bottom of the screen. Descriptions of the commands also appear later in this manual.
- Set the active serial port, shown on the bottom line, to indicate the port connected to the Maxim 80C32 module. The control-T command toggles the active port between COM1 and COM2.
- The 80C32 will transmit a logon message and RAM test results when communications are initialized. The MAX186 RAM resident program will then be automatically downloaded. The system is ready for use when the MAX186 revision banner appears and the status indication on the bottom line changes to "****READY****".
- Connect the analog inputs to the CH0-CH7 pads and refer to the menu at the bottom of the screen for commands to configure the input multiplexer.
- Single conversion cycles occur whenever the Enter key is pressed. Continuous conversion cycles are initiated with a "C" and continue until any key is pressed.

MAX186 Evaluation System/Evaluation Kit

MAX186 EV Kit Quick Start

This section applies only to use of the MAX186EVKIT-DIP without the 80C32 module.

The MAX186 evaluation board can easily be configured in the quick-look circuit of Figure 5 of the MAX186/MAX188 data sheet. All of the necessary digital pins are provided on the 8-pin header located along the bottom edge of the board. Each pin function is indicated by labels below the header.

1. Solder the 10-pin SIP resistor, provided with the kit, in the R9 location on the EV kit board. The SIP resistors act as pull-ups for the digital signals connected to the 8-pin header. The marked end of R9 is pin 1.
 2. Connect +5V and ground (GND) to the appropriately labeled pads on the evaluation board.
 3. To operate the MAX186 in single-supply mode, ground the header pin marked VSEL. Leaving the pin open sets the MAX186 V_{SS} pin to -5V (dual-supply operation).
 4. Connect a clock signal (0.1MHz to 0.4MHz*) to the header pin, labeled SCLK.
 5. Ground the header pin, labeled \overline{CS} .
 6. Connect an analog input source to the channel 7 input pad, labeled CH7.
 7. Connect an oscilloscope, as shown in Figure 5 of the MAX186/MAX188 data sheet.
- * To run at clock frequencies up to 2MHz, an external compensation capacitor must be connected to the VREF pin. Install the 22 μ F capacitor supplied with the kit in location C6, and cut the trace across jumper JU2 to disable the MAX186 internal compensation.

Detailed Description

V_{SS} Circuit

An ICL7660 +5V to -5V converter and a DG413 analog switch (mounted on the MAX186 evaluation board) provide the means to switch the MAX186's V_{SS} voltage between ground and -5V. The analog switch is not required for most application circuits because the V_{SS} voltage will be fixed at either -5V or ground. A negative V_{SS} supply is required only when the MAX186's input is expected to go below ground.

Table 1. Port 1 Bit Functions

BIT	NAME	FUNCTION
P1.0	V_{SS} SEL	V_{SS} select switches the MAX186 V_{SS} pin between ground and -5V. Logic low, $V_{SS} = 0V$; logic high, $V_{SS} = -5V$.
P1.1	SCLK	Serial clock for data transfer
P1.2	\overline{SHDN}	Drives the MAX186 \overline{SHDN} pin. Cut jumper JU2 to float the SHDN pin.
P1.3	-	Not used
P1.4	SSTRB	MAX186 SSTRB pin. Provides the busy output during internal clock mode (see MAX186/MAX188 data sheet).
P1.5	DOUT	MAX186 DOUT pin. Transfers conversion data from the MAX186 to the 80C32.
P1.6	\overline{CS}	MAX186 \overline{CS} pin. Enables serial communications with the MAX186.
P1.7	DIN	MAX186 DIN pin. Transfers data from the 80C32 to the MAX186.

The ICL7660 provides a -5V source with minimal additional circuitry. The ICL7660 converter circuit on the MAX186 EV kit is the standard circuit for +5V to -5V conversion. Its 10mA output capacity is much more than is needed by the MAX186, which requires only 50 μ A. The additional current is available for user circuits in the prototyping area. For applications where the MAX186 is the only load, the 10 μ F capacitors may be reduced to 0.1 μ F.

Serial Interface

The 80C32 and MAX186 communicate through the 8 bits of port 1 on the 80C32. Table 1 lists the function of each bit. The 80C32 drives MAX186 input data on the DIN bit and receives data from the MAX186 on the DOUT bit. For the first eight clock cycles after chip-select (\overline{CS}) goes low, DIN data is clocked into the MAX186 on the rising edge of the serial clock (SCLK) signal. For the 12 data-output clock cycles, the MAX186 updates DOUT data on the falling edge of SCLK. See the MAX186 data sheet for complete information concerning the serial interface; Figures 6-12 of the MAX186/MAX188 data sheet are timing diagrams

MAX186 Evaluation System/Evaluation Kit

for operating in the internal and external clock modes. Note that the maximum conversion rate of the EV system is limited to 5ksps, because of the speed limitation of the 80C32. For evaluation at full speed, see the *MAX186 EV Kit Quick Start* section.

The MAX186 digital signals are available on the 8-pin header located on the bottom edge of the board. This header provides convenient connections for scope probes or a ribbon cable. Digital timing can be observed on these pins when the "loop continuously" command ("L") has been entered.

Conversion Cycles

The MAX186 performs conversions on demand or at preset intervals. The conversion sequence does not vary with the two methods. If the device is in shutdown mode, a dummy conversion brings it out of shutdown, and the program delays to allow the reference voltage to settle. Then, as many as eight conversions are performed to collect data for a complete line of the screen display. Finally, if shutdown mode is enabled, another dummy conversion returns the MAX186 to the proper shutdown state.

When conversion cycles are repeated at regular intervals, using the load RAM (R) or loop continuously (L) commands, a programmable delay occurs between the groups of conversions. The "N" command can be used to vary this shutdown period. The interval can be observed with a scope connected to the \overline{CS} pin (available on the 8-pin header) after entering the "L" command.

Shutdown Mode

The MAX186 has two shutdown levels. The FULL shutdown mode completely disables the MAX186 reference circuit and reduces supply current to $2\mu\text{A}$. A delay of $300\mu\text{s}$ is required to activate from this shutdown state. The delay must be greater when the external reference compensation capacitor, C6, is installed. Be sure to set the reference settling delay (using the "Q" command) whenever the FULL shutdown mode is used. Table 5 of the MAX186/MAX188 data sheet lists the reference settling times required for different external capacitors.

The second shutdown level disables only the reference output buffer. This drops the supply current to $30\mu\text{A}$, but requires a shorter delay ($5\mu\text{s}$ with internal compen-

sation) between activation and conversion cycles. This is referred to as the FAST shutdown mode.

On the MAX186 evaluation board, the \overline{SHDN} pin (P1.2), is programmed high so that it always enables the MAX186 in normal operation. All modes are controlled through software. In FAST or FULL shutdown mode, the MAX186 is placed in shutdown between conversion cycles and activated just before the conversions begin. This reduces the average supply current but will require a delay before the conversions. The *MAX186EVKIT Personal Computer Program* section has information on varying the delay and controlling the shutdown mode.

Jumper JU2 is in series with the \overline{SHDN} pin of the MAX186. Opening this jumper floats the \overline{SHDN} pin, disabling the internal compensation of the reference buffer. The external compensation capacitor, C6, is supplied with the kit but not mounted on the printed circuit board. If you wish to use external compensation, cut the trace across JU2 and mount the $22\mu\text{F}$ capacitor, C6. The reference settling delay must be increased. See the MAX186/MAX188 data sheet for descriptions of internal and external reference compensation.

Evaluating External Reference Voltages

The MAX186 can be operated with an external reference voltage if the internal reference is disabled. Connecting the REFADJ pin to V_{DD} will disable the internal reference. Soldering a short piece of wire across jumper JU3 will make this connection. The $22\mu\text{F}$ capacitor should also be soldered into location C6 when using an external voltage. The reference voltage is then applied to the pad labeled VREF.

To use the MAX188, which requires an external reference, install C6 and connect the reference source to the VREF pad.

Jumper JU1 facilitates monitoring the MAX186 supply current in the shutdown modes. The jumper allows the insertion of a current meter in series with the MAX186 V_{DD} supply. To monitor the current, cut the printed circuit trace between the two holes marked JU1. Then solder two short leads in each hole and connect the ammeter. A short piece of wire can be soldered across the jumper location to restore normal connections.

MAX186 Evaluation System/Evaluation Kit

The loop command (L) continuously cycles the MAX186 using the delays set by the user for the time between conversions and the reference settling delay. The mode is useful for observing timing relationships as well as monitoring the supply current with different delays and shutdown levels.

Analog Inputs

Each of the eight inputs has a 300Ω resistor in series. These optional resistors were included as current-limiting devices for input overvoltage conditions. There is also an optional $0.01\mu\text{F}$ capacitor on each of the inputs. This provides the low source impedance required when the channel is the low side of a differential input pair. The input capacitors are not required on channels used as single-ended inputs. Refer to the *Pseudo-Differential Input* section of the data sheet.

Reference Adjustment

The MAX186 software assumes a reference voltage of 4.096V. This value is used for calculating the displayed results after each conversion. The value can be altered to reflect the exact reference voltage of the MAX186 or to scale the displayed readings. Changing the indicated value does not alter the MAX186's reference voltage. Use the "F" command to enter the new reference value.

The MAX186's internal 4.096V reference voltage can be adjusted over a $\pm 1.5\%$ range by adding resistors R10 through R13, shown on the schematic. Refer to the MAX186 data sheet for detailed information about the reference voltage.

Software

186EVKIT Personal Computer Program

The 186EVKIT program is one of two separate programs supplied with the MAX186 EV kit. The program, which runs on a personal computer, handles the user interface, controls communications with the 80C32 module, and displays conversion results. It was written in the C language using Microsoft's QuickC software package.

The output display consists of several fields. The top five lines of the screen contain three separate elements. The top line displays the title and version. The next four lines show the MAX186 configuration. On line 2, indicators show the clock mode (internal or external),

V_{SS} supply voltage (GND or -5V), operating mode (active, FAST shutdown, or FULL shutdown), and reference voltage. The next three lines indicate the configuration of the input multiplexer. This part of the display changes whenever a command alters the configuration of the MAX186.

Lines 6-20 of the display are for conversion results. Readings from the MAX186 appear in columns across the screen. This field scrolls as new readings are collected.

The bottom part of the display contains a menu of the available commands. Type "M" to examine the complete list of commands.

The bottom line displays the status of the communications port connected to the Maxim 80C32 module. The communication status indications in the lower right-hand corner of the display will read "****Not Ready****" until the RAM resident program has been downloaded. It then changes to "**** READY ****". Other status flags appear here when the MAX186 conversions are being stored in RAM or retrieved for display.

Also shown on the bottom line is the present selected channel. All commands referring to the input multiplexer affect only the indicated selected channel. The top portion of the display updates whenever a channel command is entered.

RAM Resident Program

The 186RAM.MAX program is an 80C32 program that is transferred from disk to the static RAM on the 80C32 module. It receives conversion commands from the 186EVKIT program running on the personal computer, controls the conversion cycle, and returns the results. Its operation is transparent to the user.

EPROM Resident Program

In addition to the two programs supplied with the MAX186 EV kit, a small 80C32 bootstrap program is stored in the EPROM located on the 80C32 board. The EPROM resident program initializes the 80C32, establishes communications over the RS-232 link, checks the static RAM, and downloads the 186RAM program. Its operation starts on power-up and whenever the reset button is pressed. It transmits an identification banner after receiving the first character and then tests the on-board static RAM.

MAX186 Evaluation System/Evaluation Kit

The last operation performed by the EPROM resident program is downloading the 186RAM program and storing it in the static RAM. Once the program is fully loaded, control of the 80C32 is transferred to the RAM resident 186RAM program.

Both the EPROM and RAM resident programs were written with an assembler from Avocet Systems (Phone: 1-800-448-8500). Source code for all Maxim software can be found on the floppy disk supplied with the MAX186 EV kit.

Available Software Commands

The following is a list of the keyboard commands available in the 186EVKIT program. A copy of this section is on the floppy disk provided with the MAX186 evaluation board. The SOFTWARE.DOC file will contain any updates or revisions made after this manual was printed.

- 0-7Set the selected channel for the commands affecting the input multiplexer configuration. The selected channel is displayed on the bottom display line.
- USets the selected channel to unipolar mode.
- BSets the selected channel to bipolar mode.
- SSets the selected channel to single-ended mode.
- DSets the selected channel to differential mode. The selected channel becomes the analog high (+) input. Channel pairs 0/1, 2/3, 4/5 and 6/7 can operate in combinations of single-ended inputs and differential pairs. For differential pairs, the first channel listed on the top information bar is the positive input. The output reading will be positive when this pin is more positive than the other input.
- OToggles the selected channel off/on. The selected channel is also turned on when any command alters its mode.
- HSets the data output format to hexadecimal mode. The output will range between 0-FFF for 0 to +4.096V in unipolar mode, and between 800-7FF for -2.048V to +2.048V in bipolar mode.
- VSets the data output format to decimal mode. The display will range between 0.000V and +4.096V in unipolar mode, and between -2.048V to +2.048V in bipolar mode.
- CRA carriage return (CR) will perform a single conversion cycle and display the results.
- CStarts a continuous stream of conversions. Pressing any key will terminate the stream.
- ISets the number of conversion cycles to be collected in RAM when the "R" command is given. The range is between 1 and 1024. Two bytes are collected for each reading stored. With all eight channels active and 1024 cycles collected, the RAM would hold 2 x 8 x 1024 (16k) bytes.
- NSets the delay between conversions for the looping and the RAM collection sequence. The interval increases approximately 2 μ s for each loop.
- QChanges the reference settling delay (the interval between bringing the MAX186 out of shut-down and the start of conversions). The interval increases approximately 2 μ s for each loop.
- RStarts the collection of data to RAM. The status line will display "*** CONVERTING ***" while the data is being collected in the static RAM. The number of conversions collected is set with the "I" command. Pressing any key will terminate the collection.
- EUploads the data from the RAM and displays the values. The status line will display "*** UPLOADING ***" while the data is being received over the serial data link. Consider setting the baud rate higher than the default 1200 if this feature is used frequently. After the data has been uploaded, the following commands may be used to examine different entries:
- Up ArrowMove 1 entry up
 - Down ArrowMove 1 entry down
 - Page UpMove 12 entries up
 - Page DownMove 12 entries down.
- Pressing any other key will return to normal operation.
- MDisplays another portion of the help menu at the bottom of the screen. All commands are available at all times.
- EscClears the data field and redraws the display.

MAX186 Evaluation System/Evaluation Kit

- Ctrl-T.....Toggles the active serial communications port between COM1 and COM2. The active port is identified on the bottom status line.
- Ctrl-R.....Changes the baud rate of the active serial port. The board and program initialize at 1200. If the program is exited with another rate active, the board must be manually reset. Higher baud rates are usable for data uploading and on personal computers with faster video operations. If the rate is set too high, data will be lost.
- Ctrl-UDownloads the RAM resident program.
- Ctrl-X.....Exits the program and returns to DOS.
- F.....Enters the measured value for the reference voltage. This value is used in the calculation for the displayed conversion results. The present value is on the second line of the display.
- K.....Toggles the MAX186 clocking mode between internal and external modes. The present mode is indicated on the second line of the display.
- Z.....Toggles the MAX186 V_{SS} supply voltage between ground and -5V. The present voltage is indicated on the second line of the display.
- P.....Toggles the MAX186 state between conversion cycles. In Power-On, the MAX186 reference circuit is always ready. In FAST Shutdown, the MAX186's reference output buffer is disabled and the MAX186 draws approximately 35 μ A between conversion cycles. In FULL Shutdown, the MAX186 reference circuit is completely shut down and supply current drops to approximately 5 μ A between conversion cycles.

Evaluates: MAX186

MAX186 Evaluation System/Evaluation Kit

Evaluates: MAX186

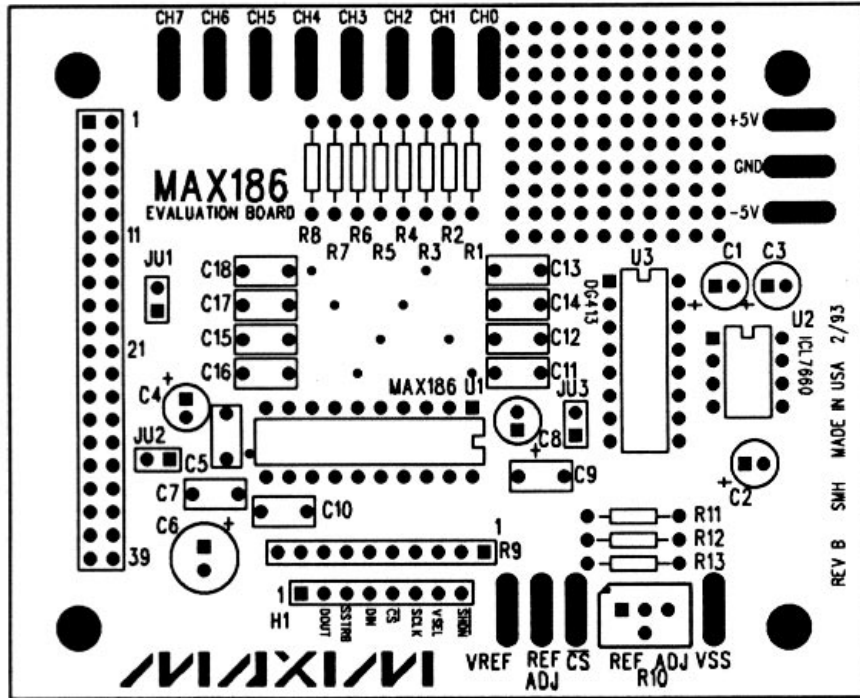


Figure 2. MAX186 EV Kit Component Placement Guide

MAX186 Evaluation System/Evaluation Kit

Evaluates: MAX186

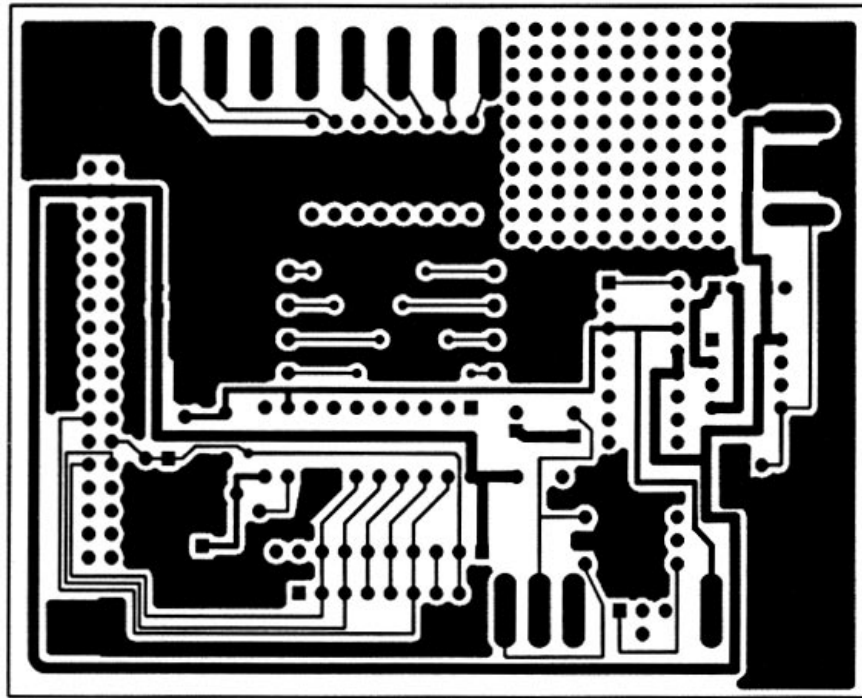


Figure 3. MAX186 EV Kit Component-Side Layout

MAX186 Evaluation System/Evaluation Kit

Evaluates: MAX186

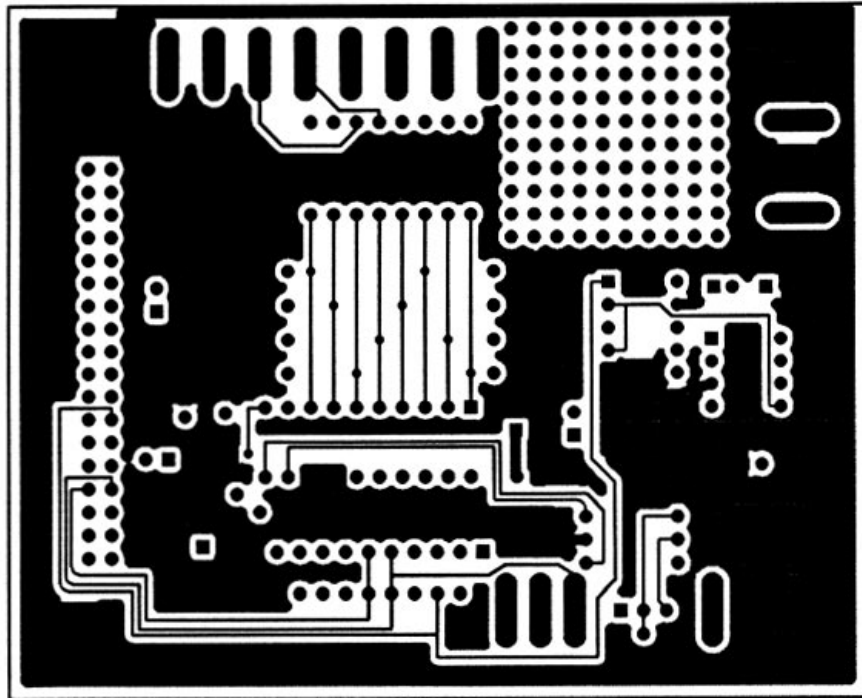


Figure 4. MAX186 EV Kit Solder-Side Layout

MAX186 Evaluation System/Evaluation Kit

80C32 Module

80C32 Module General Description

The Maxim 80C32 microcontroller (μC) module is intended for use with this and other Maxim evaluation kits (EV kits). It contains the 80C32 μC , RS-232 interface, 8kbytes of EPROM, 32kbytes of static RAM, and address decoding logic. A 40-pin connector mates with a connector found on Maxim EV kits designed to interface with the 80C32 module.

80C32 Module Component List

DESIGNATION	QTY	DESCRIPTION
C1, C2	2	15pF ceramic capacitors
C4, C5, C6, C7, C8, C9, C10, C11, C12	9	0.1 μF , 50V ceramic capacitors
C3, C13, C14	3	22 μF , 16V radial electrolytic capacitors
D1	1	1N4001 diode
J1	1	40-pin right-angle male connector
J2	1	DB9 right-angle socket
R1	1	620 Ω resistor
RS1	1	10k Ω 10-pin, 9-resistor SIP
SW1	1	Power switch
SW2	1	Reset switch
IC1	1	80C32
IC2	1	MAX233CPP
IC3	1	27C64
IC4	1	74HCT573
IC5	1	74HCT139
IC6	1	74HCT08
IC7	1	74HCT245
IC8	1	62256
IC9	1	78M05
IC10	1	MAX707CPA
Y1	1	11.059MHz crystal
None	1	2-pin power connector
None	1	28-pin 600-mil socket for IC3 (the EPROM)
None	4	Rubber feet
None	1	3.00" x 5.50" PC board

The module is connected to an IBM-compatible personal computer over a serial communications port. Software provided with each EV kit runs on the computer and controls the unit consisting of the 80C32 module and EV kit. The program uses a routine stored in the 27C64 EPROM to download special 80C32 code for each kit. The downloaded code controls the EV kit and, together with the program running on the personal computer, displays the output data.

The board operates from a single 8V to 22V supply. Both the pre-regulated and regulated +5V levels are available to the EV kit through the 40-pin connector.

80C32 Module Power Supply

The Maxim 80C32 module requires an input of 8V to 22V for normal operation. An on-board 78M05 power regulator supplies the 5V required for the logic on the module, and any 5V requirements for the EV kit attached to the 40-pin connector. The pre-regulated voltage is also available on the data connector. The source must be capable of supplying 100mA for the module and meeting the load requirements of the EV kit.

Microprocessor Supervisor

A MAX707 on the module monitors the 5V logic supply, generates the power-on reset, and produces a reset pulse whenever the reset button is pressed. A watchdog function was not included because they frequently interfere while debugging programs, and debugging is a prime function of this board.

80C32 Microcontroller

The 80C32 is a member of the popular Intel 8051 family of μC s. It is a low-power CMOS version that requires external ROM for program storage, 256 bytes of internal RAM, and four 8-bit I/O ports. Three of the ports are required by the system for serial communications and memory control. The fourth port (P1) is available through the data connector.

The 80C32 communicates with the PC over a serial RS-232 link. A MAX233 acts as a level shifter between the $\pm 15\text{V}$ RS-232 signals and the TTL levels of the 80C32.

MAX186 Evaluation System/Evaluation Kit

The MAX233 also generates the output voltages necessary to drive RS-232 lines.

Port 0 (pins 32-39) of the 80C32 multiplexes the lower eight bits of memory address and the eight bits of read/write data. The lower eight bits of address data are latched during each I/O cycle by the 74HCT573 octal latch. The latch is controlled by the address latch enable (ALE) signal of the 80C32. Port 2 (pins 21-28) of the 80C32 supplies the upper eight bits of address information.

The port 3 pins (10-17) provide several unrelated functions. Pins 10 and 11 are used as the receive data (RxD) and transmit data (TxD) pins of the RS-232 link. Pins 16 and 17 act as the write (\overline{WR}) and read (\overline{RD}) control signals for the data I/O cycles. Four other pins are configured as interrupt and timer controls, but are not used on this board.

Memory

The board has a 27C64 EPROM containing code for initializing the 80C32 and downloading additional program code to the 62256 RAM. After a reset, the EPROM resident code initializes the 80C32, determines the address range of the RAM, sets the RS-232 baud rate to 1200, and waits for communications from the PC. Receiving any character will prompt the program to send an initial banner that includes the program name, revision level, and boundaries of the on-board RAM.

The 62256 CMOS (32kbyte) static RAM is used to hold program code for the various Maxim EV kits that use the 80C32 module as the controller. Programs are transferred from disk to the RAM using software running on a personal computer, such as MAXLOAD or other programs provided with Maxim EV kits. Programs written to execute from this RAM start at 4000 (HEX) and are typically less than 4kbytes long. The remaining RAM is available for data storage.

Address Ranges

Logic on the module board generates various enable signals for different address ranges. The ROM and RAM enable signals are fed directly to the respective chips. Several additional signals (CS0-CS3) are available on the data connector to be used by Maxim EV kits. Table 1 outlines the address range for each of the elements found on the 80C32 module.

Table 1. Address Ranges in Hexadecimal

ADDRESS RANGE (HEX)	ENABLE SIGNAL
0000 → 3FFF	ROM
4000 → BFFF	RAM
C000 → CFFF	CS0
D000 → DFFF	CS1
E000 → EFFF	CS2
F000 → FFFF	CS3

Data I/O Connector

A 40-pin connector mounted on the edge of the printed circuit board provides connection between the μ C module and other Maxim EV kits. Both power and digital signals are transferred via the connector. To join the module board with an EV kit, carefully align and insert the pins on the connector with the mating 40-pin female connector of the kit. The pin functions are listed in Table 2.

Table 2. I/O Connector Pin Functions

PIN	FUNCTION	DESCRIPTION
1-4	Ground	
5, 6	Pre-regulator input	
7, 8	Regulated +5V	
9	\overline{RD}	Read strobe
10	\overline{WR}	Write strobe
11	$\overline{CS0}$	Address C000-CFFF
12	$\overline{CS1}$	Address D000-DFFF
13	$\overline{CS2}$	Address E000-EFFF
14	$\overline{CS3}$	Address F000-FFFF
15-18	ADDR0-ADDR3	Lowest 4 bits of address
19-26	DB0-DB7	8-bit data bus
27-34	P1.0-P1.7	8 bits of port 1
35-40	Reserved	

MAX186 Evaluation System/Evaluation Kit

Software Architecture

Software for EV kits using the Maxim 80C32 module is divided into three elements: the interface program running on an IBM-compatible PC, a module program located in EPROM, and a program supplied on disk that is transferred to the RAM located on the module.

EPROM Resident Program

The EPROM resident program initializes the 80C32, establishes communications over the RS-232 link, verifies the static RAM, and downloads other programs. Its operation starts on power-up and whenever the reset button is pressed. After reset, the program waits indefinitely to receive a character over the RS-232 port. When the first character is received, a logon banner identifying the module and firmware revision is transmitted.

Immediately following transmission of the logon banner, the program runs a checker routine for the on-board 256kbit static RAM. The RAM is filled with several patterns and then read to verify that each pattern has been retained. A pass or fail indication is displayed on the personal computer after each pass. EV kit software requires proper operation of the RAM. Do not attempt to use the board if any of the RAM checks fail.

Two other programs for the EV kits are provided on a floppy disk shipped with each kit. One program acts as the user interface and transmits commands to the 80C32 module. The other is an 80C32 application program that executes from the RAM located on the module. The procedure for loading the programs varies with each kit, so follow the instructions provided.

MAX186 Evaluation System/Evaluation Kit

Evaluates: MAX186

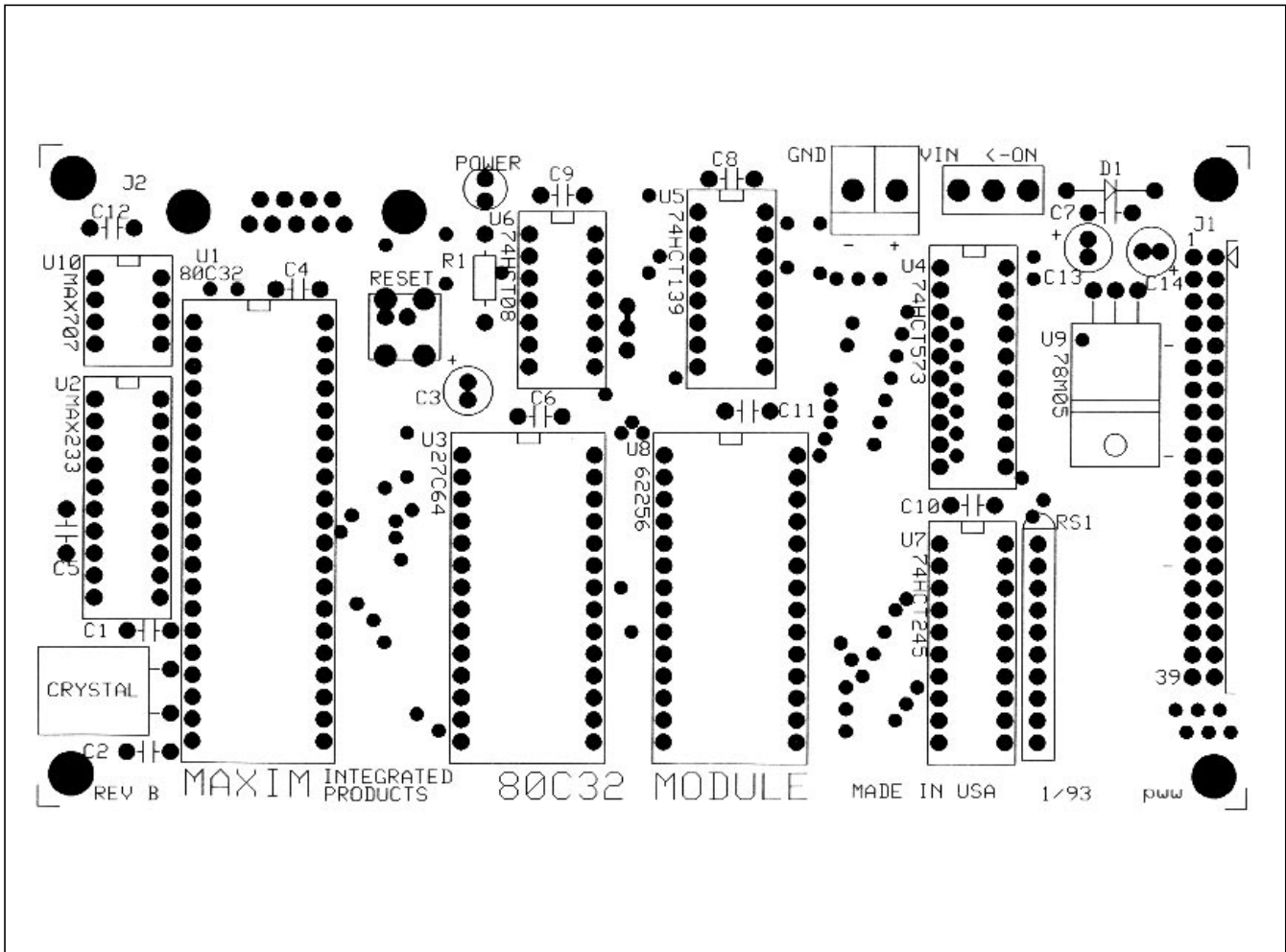


Figure 5. 80C32 Module Component Placement Guide (x2)

MAX186 Evaluation System/Evaluation Kit

Evaluates: MAX186

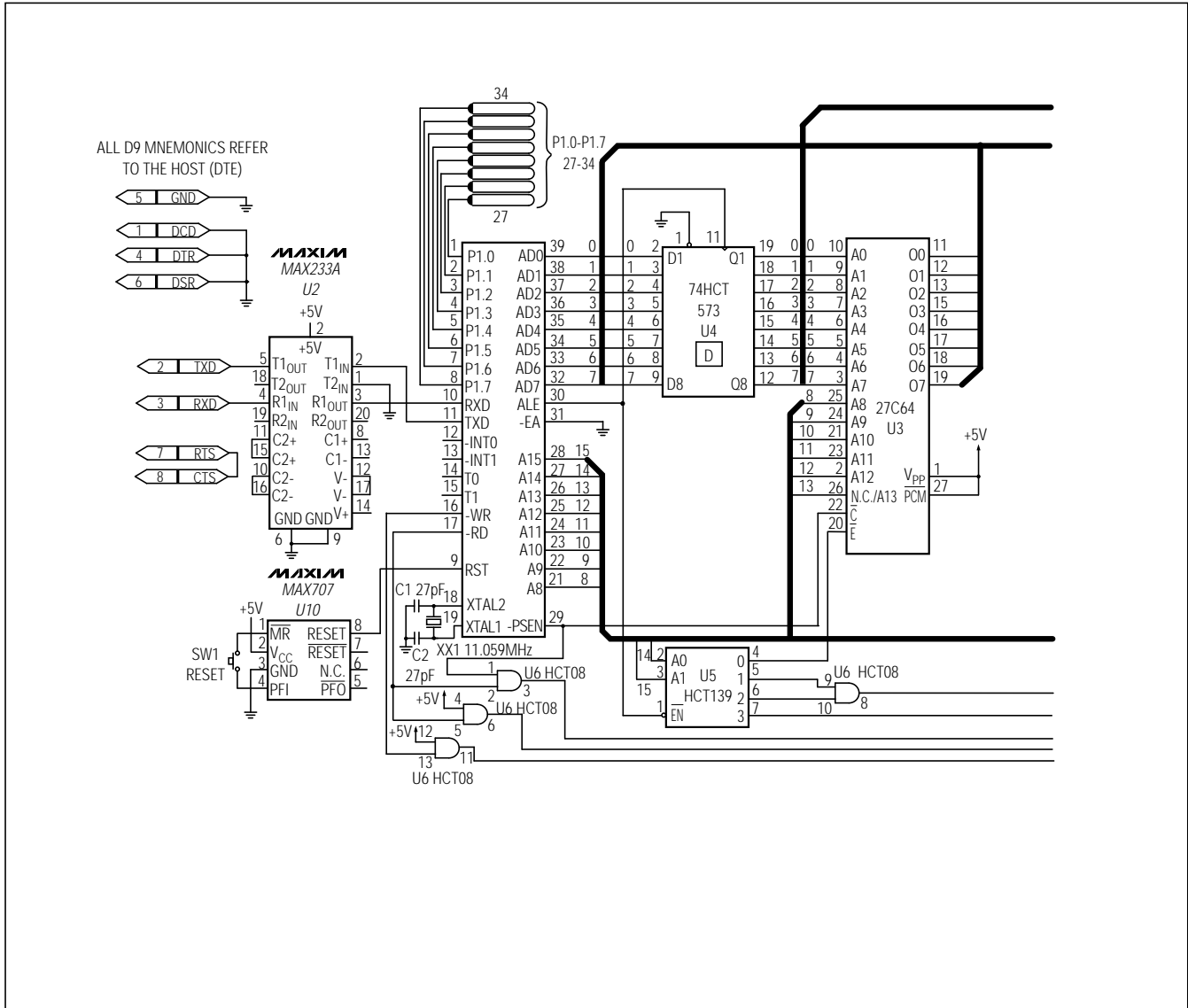


Figure 6. 80C32 Module Schematic

MAX186 Evaluation System/Evaluation Kit

Evaluates: MAX186

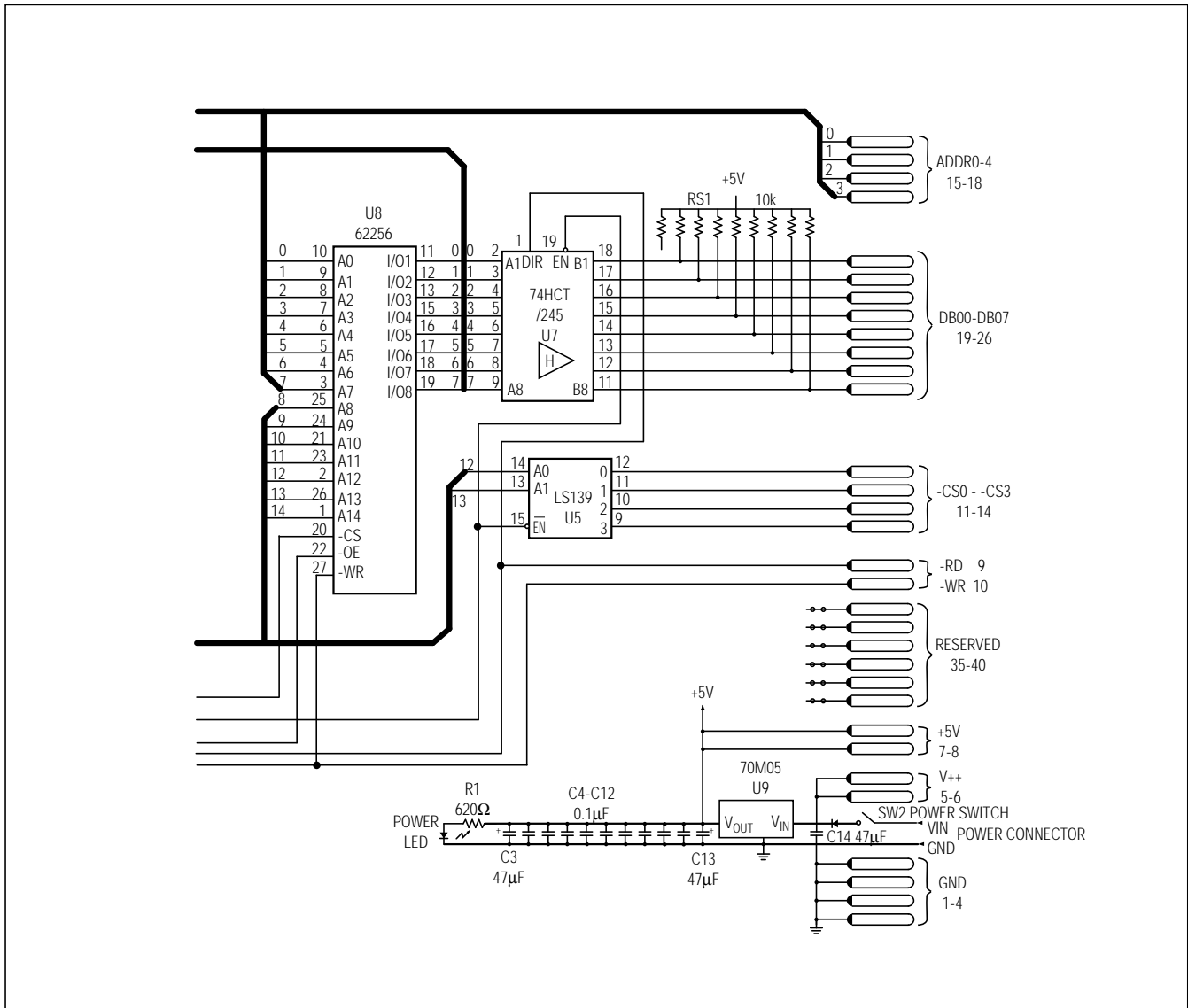


Figure 6. 80C32 Module Schematic (continued)

MAX186 Evaluation System/Evaluation Kit

Evaluates: MAX186

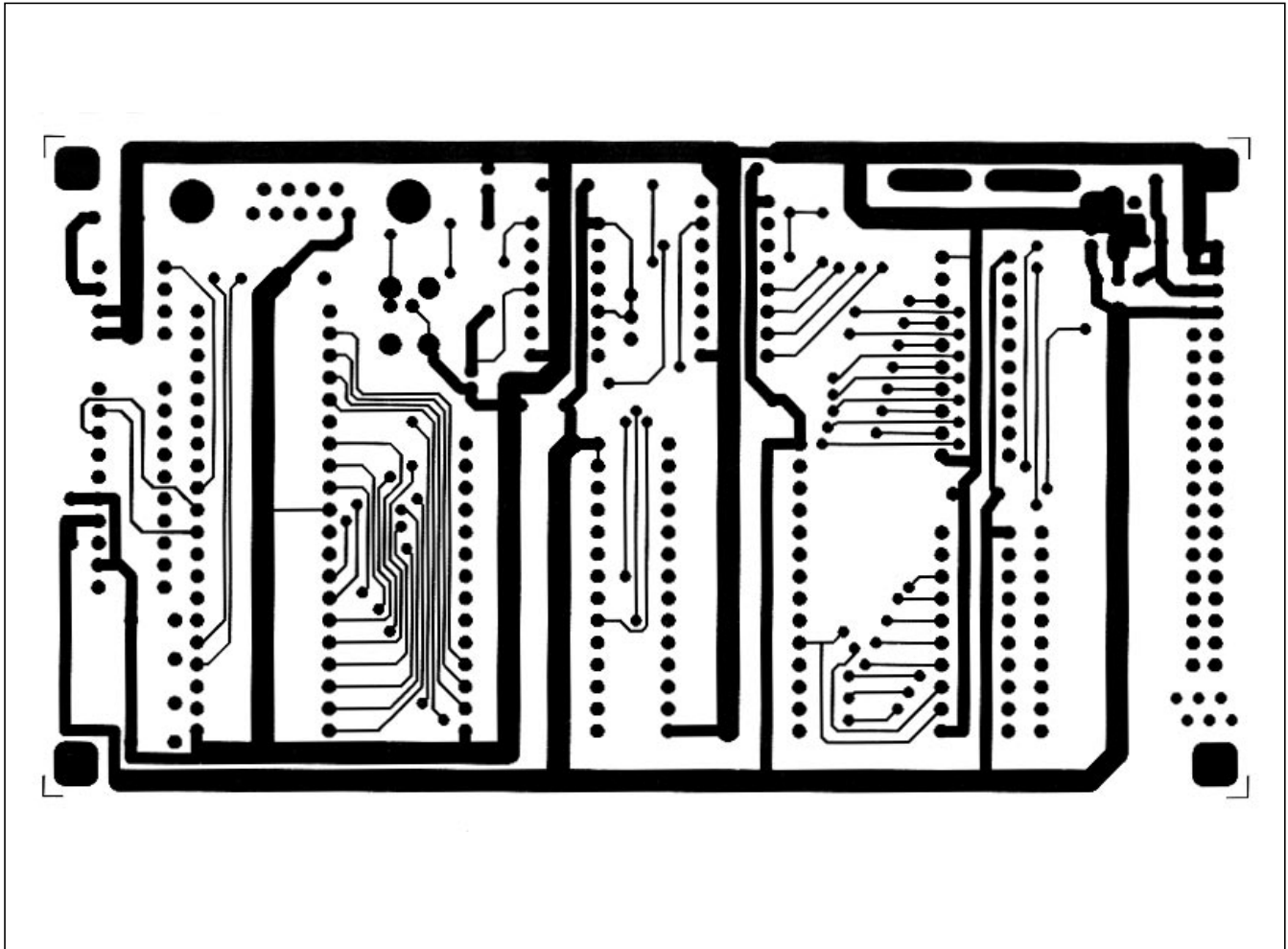


Figure 7. 80C32 Module Component- Side Layout (x2)

MAX186 Evaluation System/Evaluation Kit

Evaluates: MAX186

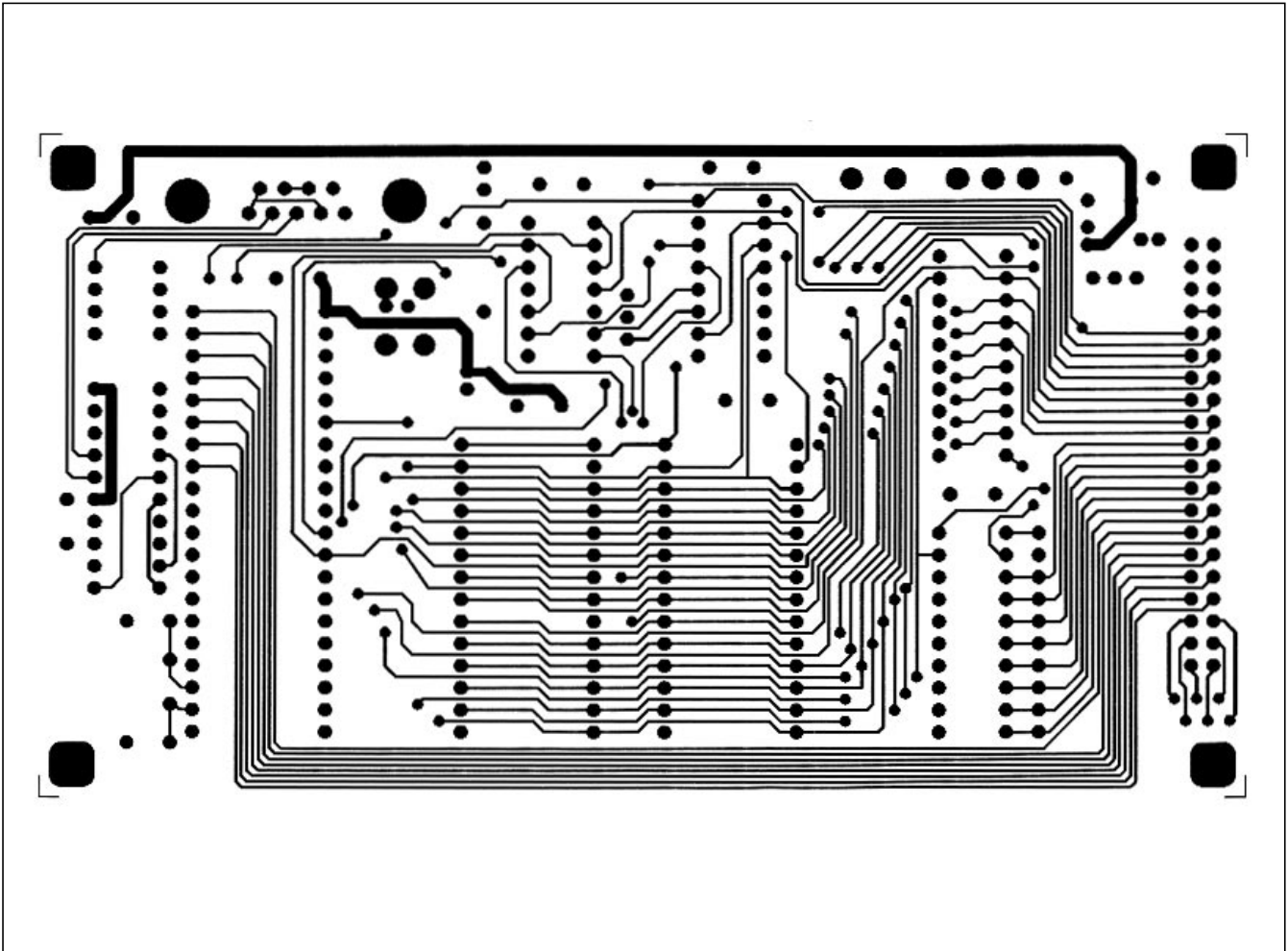


Figure 8. 80C32 Module Solder-Side Layout (x2)

MAX186 Evaluation System/Evaluation Kit

Evaluates: MAX186

Maxim cannot assume responsibility for use of any circuitry other than circuitry entirely embodied in a Maxim product. No circuit patent licenses are implied. Maxim reserves the right to change the circuitry and specifications without notice at any time.

20 _____ Maxim Integrated Products, 120 San Gabriel Drive, Sunnyvale, CA 94086 (408) 737-7600

© 1996 Maxim Integrated Products

Printed USA

MAXIM is a registered trademark of Maxim Integrated Products.