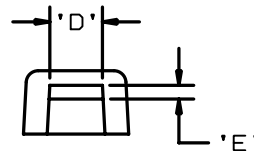
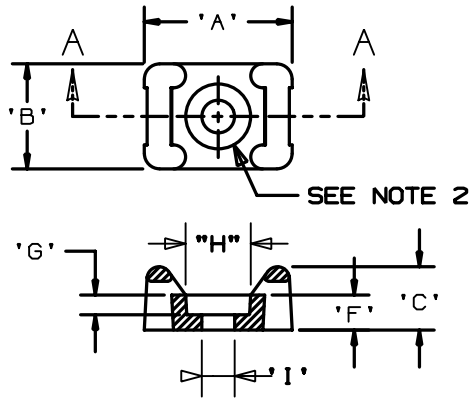


THIS COPY IS PROVIDED ON A RESTRICTED BASIS AND IS NOT TO BE USED IN ANY WAY DETRIMENTAL TO THE INTERESTS OF PANDUIT CORP.

| PANDUIT PART NO.* | MAT'L SUFFIX | RECOMMENDED FASTENER | 'A' | 'B' | 'C' | 'D' | 'E' | 'F' | 'G' (REF) | 'H' (REF) | 'I' (REF) | USE WITH THESE CABLE TIE CROSS SECTIONS | WEIGHT (g) lbs/100 pcs. |
|-------------------|----------------------------------|----------------------|-------------------|-------------------|------------------|------------------|------------------|------------------|----------------|-----------|-----------|---|-------------------------|
| TM2S6 | NONE -0 -30 -69 -120 | #6 (M3) SCREW | | | | | | | 0.090 [2.3] | 0.286 | 0.151 | MINIATURE INTERMEDIATE STANDARD | 0.126 (57.0) |
| TM2S8 | NONE -0 -30 -69 | #8 (M4) SCREW | 0.630 [16.000] | 0.425 [10.795] | 0.275 [6.985] | 0.215 [5.460] | 0.060 [1.525] | 0.155 [3.937] | 0.105 [2.7] | 0.332 | 0.176 | | 0.113 (51.5) |

| MAT'L SUFFIX | MATERIAL |
|--------------|-------------------------|
| NONE | NYLON 6/6 |
| -0 | WEATHER RESISTANT NYLON |
| -30 | HEAT STABILIZED NYLON |
| -69 | FLAME RETARDANT NYLON |
| -120 | NYLON 12 |



SECTION A-A

- NOTES:
 *1. SEE CURRENT PRICE SHEET FOR PART NUMBER SUFFIX DESIGNATION FOR PACKAGE SIZE.
 2. HOLE DIMENSIONS SHOULD ACCOMMODATE SPECIFIED RECOMMENDED FASTENER.

| | |
|---|---|
| DIMENSIONS IN BRACKETS ARE METRIC [mm] | |
| ORD FILENAME/LAYERS | G00239EM_PB_TM2S_A_06 |
| PANDUIT CORP. TINLEY PARK, ILLINOIS | |
| TM2S - TIE MOUNT | |
| UNLESS OTHERWISE SPECIFIED, DIMENSIONAL TOLERANCES ARE: (.X) ±0.05 [1.3] (.XXX) ±0.010 [0.25] (.XX) ±0.02 [0.5] ANGLES ± 5° | UNLESS OTHERWISE SPECIFIED, ALL DIMENSIONS ARE GIVEN IN INCHES, THIRD ANGLE PROJECTION. |
| DRAWN BY AJV | MAT'L: NONE |
| DATE 12-17-86 | SCALE NONE |
| CHK'D | DRAWING NO. G00239EM |
| | SIZE A |

| REV | DATE | BY | CHK | DESCRIPTION | ECN | R | CUST | SUP |
|-----|----------|-----|-----|------------------------------------|----------|---|------|-----|
| 6 | 12-19-02 | LGG | | ADDED 120 MATERIAL BACK TO DRAWING | G00239EM | 6 | | |