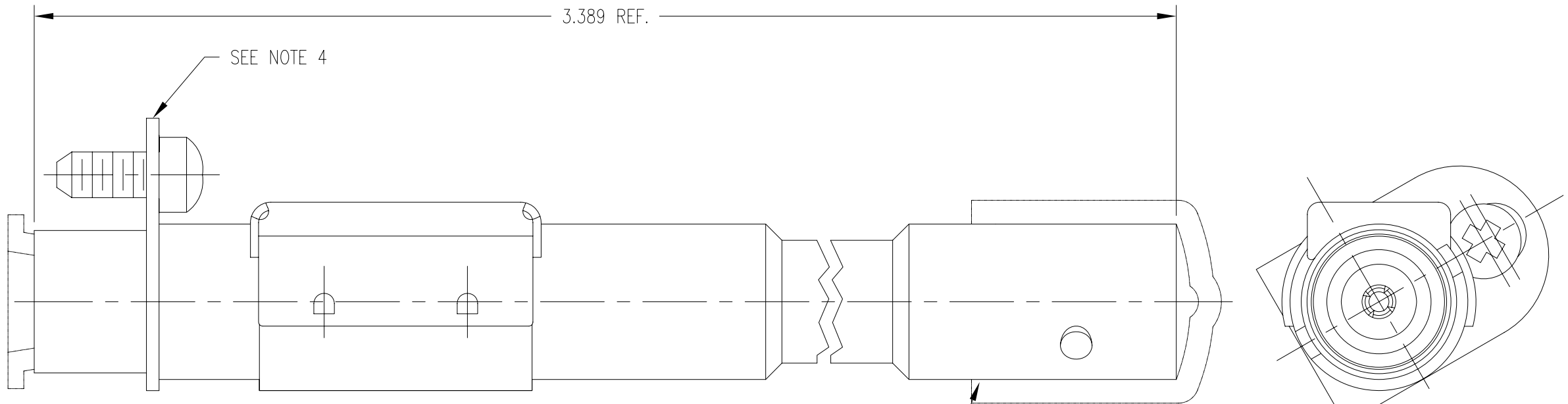


DASH NO.	M CODE	MADE FROM
----------	--------	-----------

GSD

REVISIONS	
ISSUE	CHANGES
0	ER 39399 HVN 02/02/06
1	CN 39419 E HVN 02/28/06
2	CN 39454 C HVN 05/09/06
3	CN 39651 E HVN 10/04/06
4	CN 39772 C HVN 02/01/07
F	ER13312 PSM 01/30/09

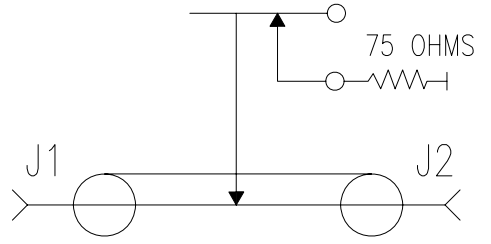
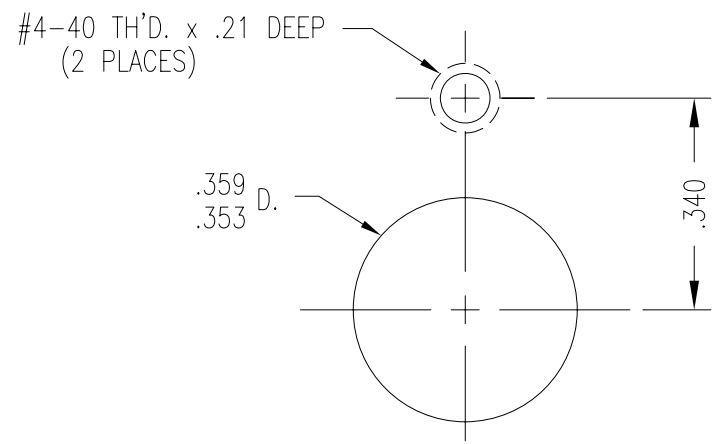
7772-4



STAMP: KINGS 7772-4
YRWK (DATE CODE)

NOTES:

- BNC INTERFACE ES-17, FIG. 5.
- MATERIALS:
 - INSULATORS-MITSUI TPX, RT18 OR EQUIVALENT
 - SPRING CONTACTS } BER. COP., ASTM-B-196
 - BNC CONTACT F }
 - VIDEO CONTACT F }
 - HARDWARE-ZINC PLATED MACHINE SCREW
 - ALL OTHER METAL PARTS-BRASS, ASTM-B16
- FINISHES:
 - CENTER CONTACT & SPRING BEAM-HARD GOLD PLATE PER ASTM-B488 OVER KINGS BRIGHT NICKEL PLATE.
 - SPRING CONTACT-GOLD PLATE PER ASTM-B488, OVER COPPER STRIKE
 - HARDWARE-PASSIVATE PER QQ-P-35
 - ALL OTHER METAL PARTS-KINGS TARNISH RESISTANT FINISH (TR-5)
- FLANGE SHOWN ROTATED 60° FOR CLARITY.
- LIFE CYCLES: 50,000 CYCLES MINIMUM.
- ELECTRICAL CHARACTERISTICS:
 - NOMINAL IMPEDANCE: 75 OHMS
 - FREQUENCY RANGE: DC - 3.0 GHZ
 - RETURN LOSS: SELF-TERMINATED MODE
 - UP TO 1.5 GHZ, < -20dB
 - UP TO 3.0 GHZ, < -10dB
- COMPLIANT TO SMPTE 424M SPECIFICATION.



SCHEMATIC: SELF-TERMINATED MODE

MOUNTING HOLES

GSD

7772-4 SD

SCALE 3: 1	
APPROX SURFACE AREA	
USED ON	
REF: EQR 925	
MIDSIZE SINGLE VIDEO JK SELF-TERMINATED, LONG LEG	
DRAWN HVN	DATE 01/23/06
DESIGN HVN	DATE 07/18/05
APPR. DCT	DATE 02/02/06
KINGS by WINCHESTER ELECTRONICS	Winchester Electronics 62 Barnes Industrial Road North Wallingford, CT 06492
	B SIZE

7772-4