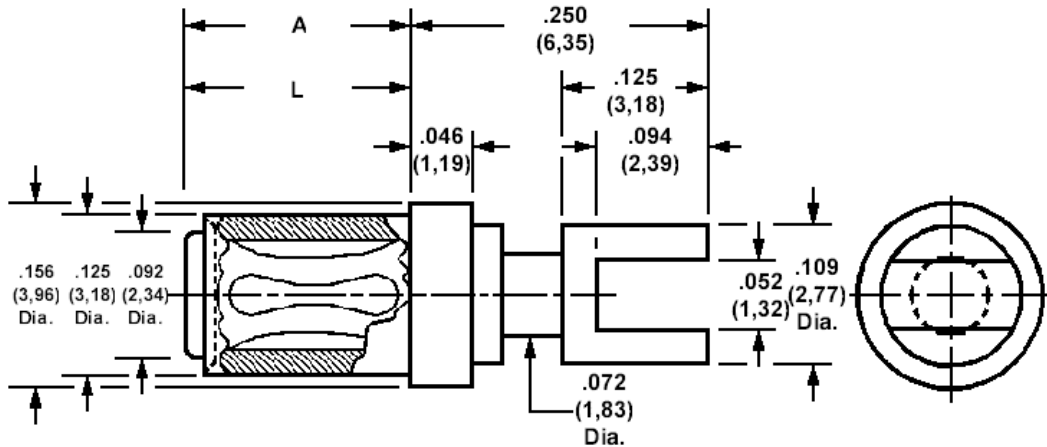


## 450-3379 Swage mount socket, for .040 (1,02) diameter pins (with slotted solder terminal tail)

Recommended mounting hole .129 (3,28) ± .002 (0,05), #30 drill



Min hole depth .175 (4,45)

### How to order code

**450-3379-YY-XX-00**

Basic Part No YY = Board thickness XX = Finish

DIMENSIONS			
Dash No (YY)	'L'	'A'	Board Thickness
-02	.094 (2,39)	.196 (5,00)	.061 (1,57)
-03	.125 (3,18)	.196 (5,00)	.094 (2,39)
-04	.156 (3,96)	.196 (5,00)	.125 (3,18)
-05	.219 (5,56)	.253 (6,43)	.187 (4,75)

MATERIALS				
Component	Material	Finish(-03)	Finish(-04)	Finish(-06)
Body	Brass	Gold over Nickel	Tin	Tin
Spring	Beryllium copper	Gold over Nickel	Tin	Gold over Nickel

TOOLING	
Recommended Swaging Tools:-	
Anvil	435-6501-01-00-00
Punch	435-6620-01-00-00