



50 Ohm 0.5 Watts Precision Passivated Stainless Steel SMA Male RF Load Up To 12.4 GHz

TECHNICAL DATA SHEET

PE6002

50 Ohm 0.5 Watts Precision Passivated Stainless Steel SMA Male RF Load Up To 12.4 GHz

Configuration

Connector Design	Precision
Connector	SMA Male
Body Style	Straight

Electrical Specifications

Frequency Range, GHz	DC to 12.4
Impedance, Ohms	50
Maximum VSWR	1.17:1
Maximum Input Power, Watts	0.5

Mechanical Specifications

Temperature

Operating Range, deg C	-55 to +125
------------------------	-------------

Size

Length, in [mm]	0.35 [8.89]
Width/Dia., in [mm]	0.312 [7.92]
Weight, lbs [g]	0.005 [2.27]

Connector

Type	SMA Male
Inner Conductor Material and Plating	Brass, Gold
Outer Conductor Material and Plating	Passivated Stainless Steel
Coupling Nut Material and Plating	Passivated Stainless Steel
Hex Size, Inch	5/16
Torque, in-lbs [Nm]	8 [0.9]
Body Material and Plating	Passivated Stainless Steel
Dielectric Type	PTFE

Compliance Certifications (visit www.Pasternack.com for current document)

RoHS Compliant	Yes
----------------	-----

Plotted and Other Data

Notes:	Values at 25 °C, sea level
--------	----------------------------

URL: <http://www.pasternack.com/0.5-watts-sma-male-rf-load-up-to-12.4-ghz-precision-pe6002-p.aspx>

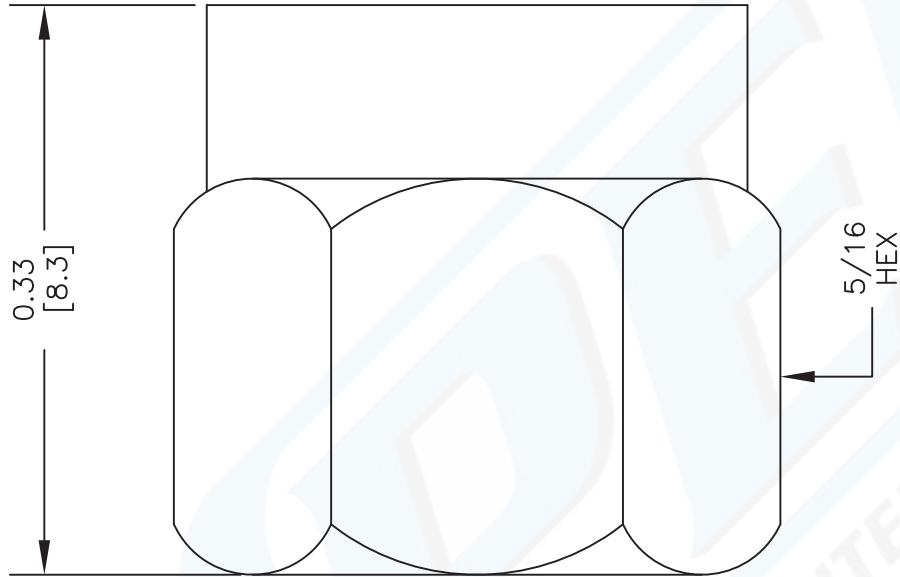
50 Ohm 0.5 Watts Precision Passivated Stainless Steel SMA Male RF Load Up To 12.4 GHz from Pasternack Enterprises has same day shipment for domestic and International orders. Our RF, microwave and fiber optic products maintain a 99% availability and are part of the broadest selection in the industry.

The information contained in this document is accurate to the best of our knowledge and representative of the part described herein. It may be necessary to make modifications to the part and/or the documentation of the part, in order to implement improvements. Pasternack reserves the right to make such changes as required. Unless otherwise stated, all specifications are nominal.



PE6002 CAD Drawing

50 Ohm 0.5 Watts Precision Passivated Stainless Steel
SMA Male RF Load Up To 12.4 GHz



NOTES:

1. UNLESS OTHERWISE SPECIFIED ALL DIMENSIONS ARE NOMINAL.
2. ALL SPECIFICATIONS ARE SUBJECT TO CHANGE WITHOUT NOTICE AT ANY TIME.
3. DIMENSIONS ARE IN INCHES [mm].

DWG TITLE

PE6002

REV. B

FSCM NO. 53919

CAD FILE 032612

SCALE N/A

SIZE A

2233



Pasternack Enterprises, Inc.
P.O. Box 16759 | Irvine | CA | 92623
Phone: (949) 261-1920 | Fax: (949) 261-7451
Website: www.pasternack.com | E-Mail: sales@pasternack.com