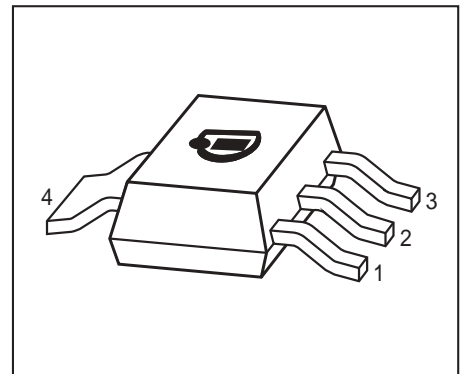


**NPN Silicon Darlington Transistors**

- High collector current
- Low collector-emitter saturation voltage
- Complementary types: BSP60 - BSP52 (PNP)
- Pb-free (RoHS compliant) package <sup>1)</sup>
- Qualified according AEC Q101



Type	Marking	Pin Configuration						Package
		1=B	2=C	3=E	4=C	-	-	
BSP50	BSP50	1=B	2=C	3=E	4=C	-	-	SOT223
BSP51	BSP51	1=B	2=C	3=E	4=C	-	-	SOT223
BSP52	BSP52	1=B	2=C	3=E	4=C	-	-	SOT223

**Maximum Ratings**

Parameter	Symbol	Value	Unit
Collector-emitter voltage	$V_{CEO}$		V
BSP50		45	
BSP51		60	
BSP52		80	
Collector-base voltage	$V_{CBO}$		
BSP50		60	
BSP51		80	
BSP52		90	
Emitter-base voltage	$V_{EBO}$	5	
Collector current	$I_C$	1	A
Peak collector current	$I_{CM}$	2	
Base current	$I_B$	100	mA
Total power dissipation- $T_S \leq 124\text{ °C}$	$P_{tot}$	1.5	W
Junction temperature	$T_j$	150	°C
Storage temperature	$T_{stg}$	-65 ... 150	

<sup>1</sup>Pb-containing package may be available upon special request

**Thermal Resistance**

Parameter	Symbol	Value	Unit
Junction - soldering point <sup>1)</sup>	$R_{thJS}$	$\leq 17$	K/W

**Electrical Characteristics at  $T_A = 25^\circ\text{C}$ , unless otherwise specified**

Parameter	Symbol	Values			Unit
		min.	typ.	max.	

**DC Characteristics**

Collector-emitter breakdown voltage $I_C = 10 \text{ mA}$ , $I_B = 0$ , BSP50 $I_C = 10 \text{ mA}$ , $I_B = 0$ , BSP51 $I_C = 10 \text{ mA}$ , $I_B = 0$ , BSP52	$V_{(BR)CEO}$	45 60 80	- - -	- - -	V
Collector-base breakdown voltage $I_C = 100 \mu\text{A}$ , $I_E = 0$ , BSP50 $I_C = 100 \mu\text{A}$ , $I_E = 0$ , BSP51 $I_C = 100 \mu\text{A}$ , $I_E = 0$ , BSP52	$V_{(BR)CBO}$	60 80 90	- - -	- - -	
Emitter-base breakdown voltage $I_E = 100 \mu\text{A}$ , $I_C = 0$	$V_{(BR)EBO}$	5	-	-	
Collector-emitter cutoff current $V_{CE} = V_{CE0max}$ , $V_{BE} = 0$	$I_{CES}$	-	-	10	$\mu\text{A}$
Emitter-base cutoff current $V_{EB} = 4 \text{ V}$ , $I_C = 0$	$I_{EBO}$	-	-	10	$\mu\text{A}$
DC current gain <sup>2)</sup> $I_C = 150 \text{ mA}$ , $V_{CE} = 10 \text{ V}$ $I_C = 500 \text{ mA}$ , $V_{CE} = 10 \text{ V}$	$h_{FE}$	1000 2000	- -	- -	-
Collector-emitter saturation voltage <sup>2)</sup> $I_C = 500 \text{ mA}$ , $I_B = 0.5 \text{ mA}$ $I_C = 1 \text{ A}$ , $I_B = 1 \text{ mA}$	$V_{CEsat}$	- -	- -	1.3 1.8	V
Base emitter saturation voltage <sup>2)</sup> $I_C = 500 \text{ mA}$ , $I_B = 0.5 \text{ mA}$ $I_C = 1 \text{ mA}$ , $I_B = 1 \text{ A}$	$V_{BEsat}$	- -	- -	1.9 2.2	

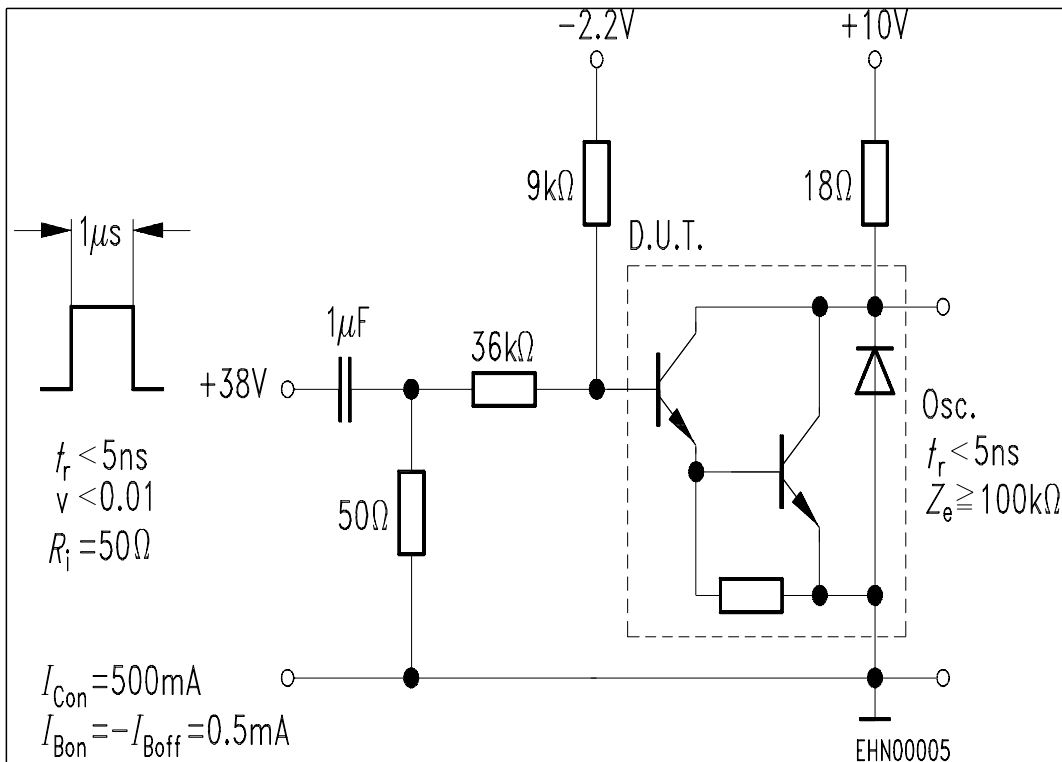
<sup>1)</sup>For calculation of  $R_{thJA}$  please refer to Application Note Thermal Resistance

<sup>2)</sup>Pulse test:  $t < 300\mu\text{s}$ ;  $D < 2\%$

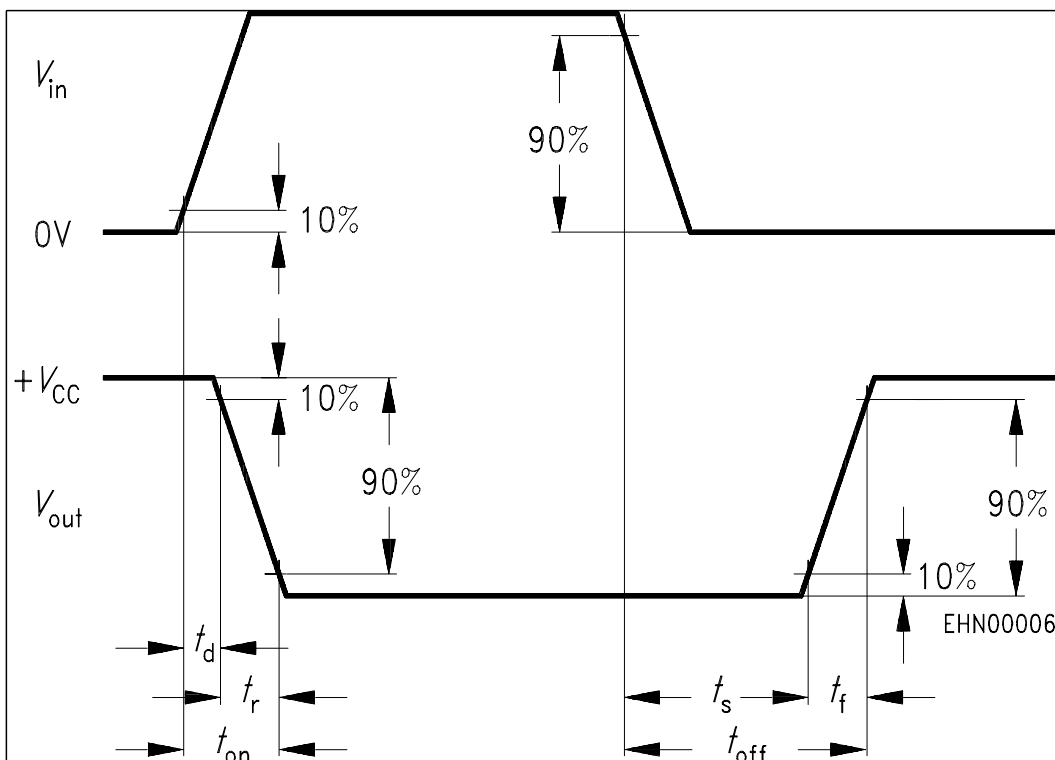
**Electrical Characteristics** at  $T_A = 25^\circ\text{C}$ , unless otherwise specified

Parameter	Symbol	Values			Unit
		min.	typ.	max.	
<b>AC Characteristics</b>					
Transition frequency $I_C = 100\text{ mA}$ , $V_{CE} = 5\text{ V}$ , $f = 100\text{ MHz}$	$f_T$	-	200	-	MHz
Turn-on time $I_C = 500\text{ mA}$ , $I_{B1} = I_{B2} = 0.5\text{ mA}$	$t_{(on)}$	-	400	-	ns
Turn-off time $I_C = 500\text{ mA}$ , $I_{B1} = I_{B2} = 0.5\text{ mA}$	$t_{(off)}$	-	1500	-	

Switching time test circuit

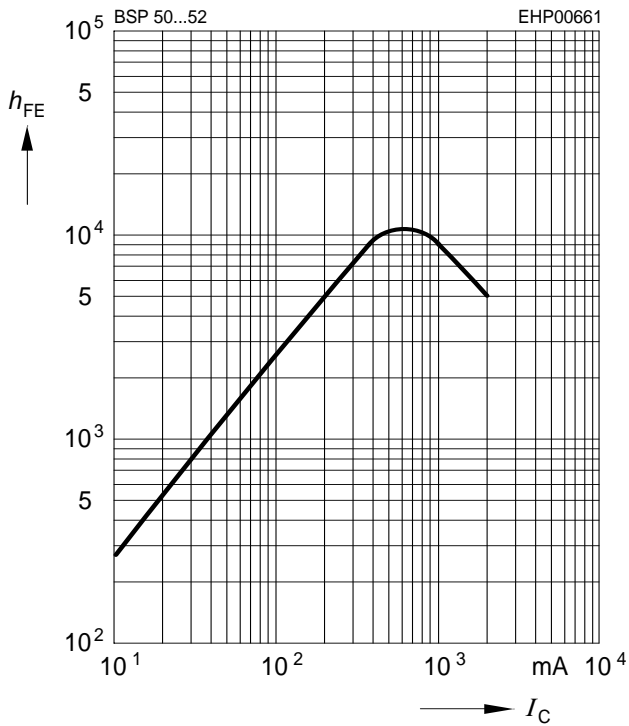


Switching time waveform



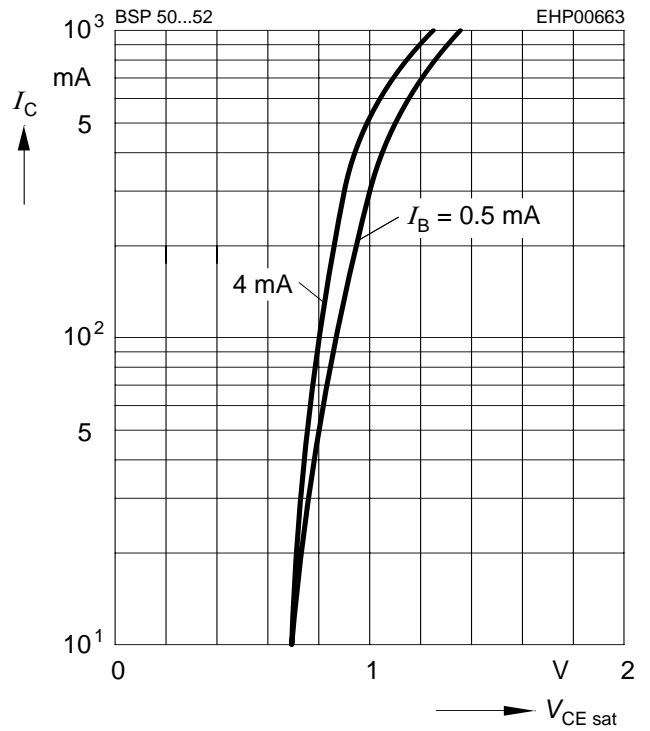
**DC current gain  $h_{FE} = f(I_C)$**

$V_{CE} = 10\text{ V}$



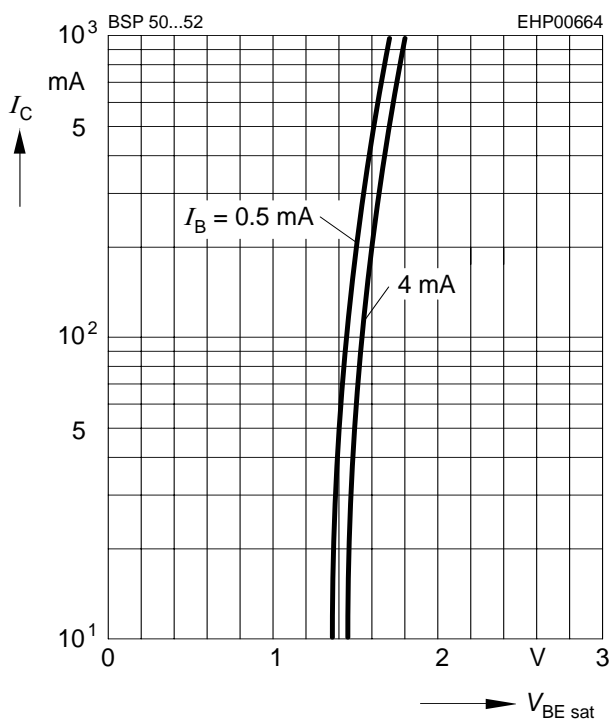
**Collector-emitter saturation voltage**

$I_C = f(V_{CEsat}), I_B = \text{Parameter}$



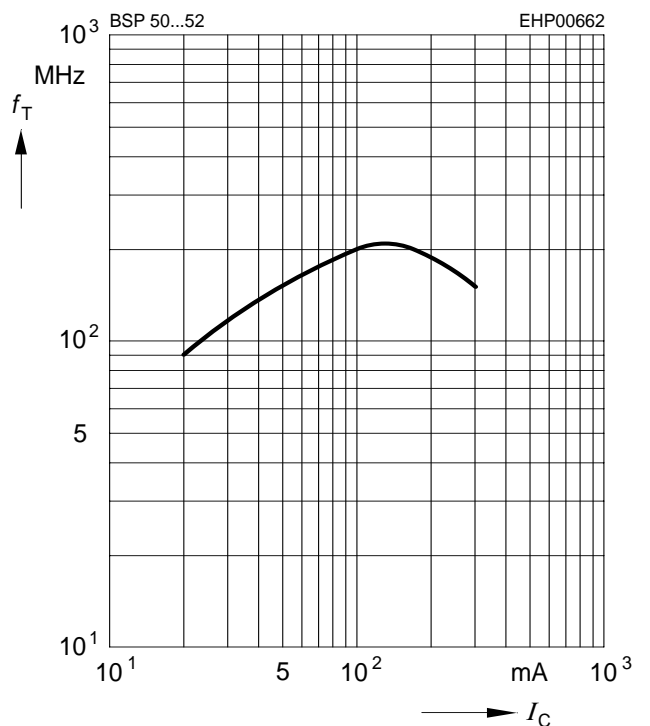
**Base-emitter saturation voltage**

$I_C = f(V_{BEsat}), I_B = \text{Parameter}$



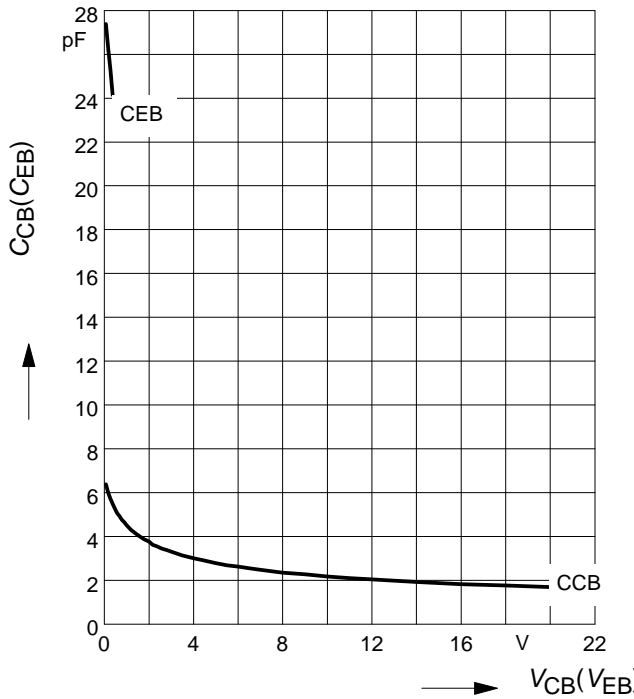
**Transition frequency  $f_T = f(I_C)$**

$V_{CE} = 5\text{ V}, f = 100\text{ MHz}$

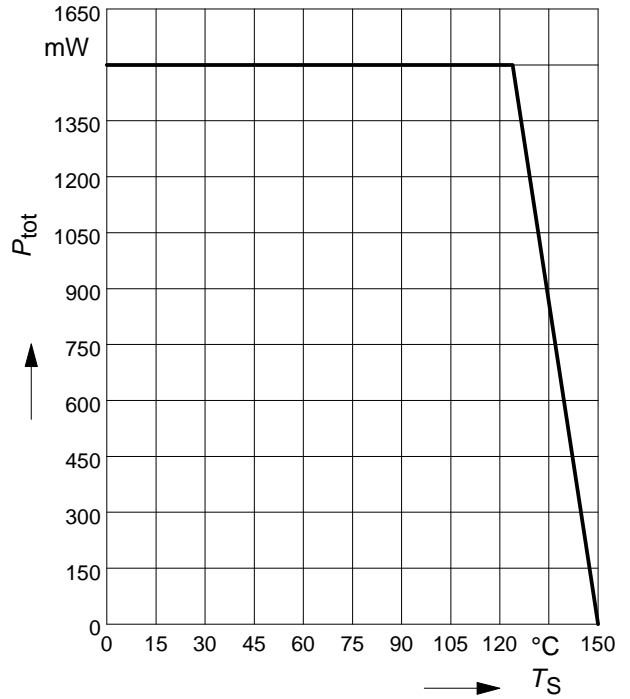


Collector-base capacitance  $C_{cb} = f(V_{CB})$

Emitter-base capacitance  $C_{eb} = f(V_{EB})$

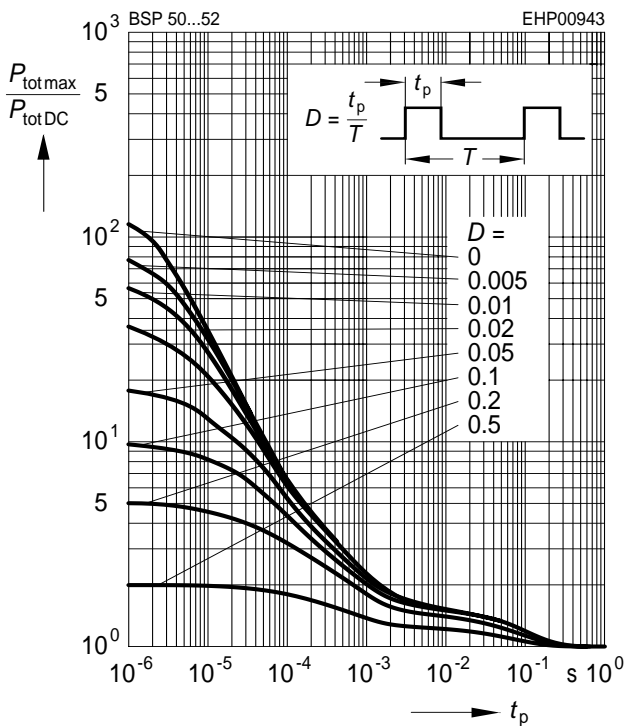


Total power dissipation  $P_{tot} = f(T_S)$



Permissible Pulse Load

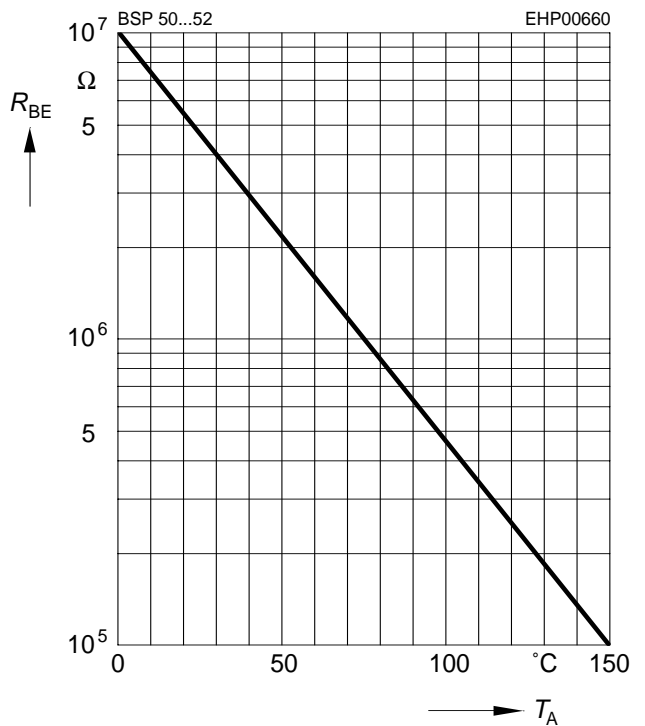
$P_{totmax}/P_{totDC} = f(t_p)$



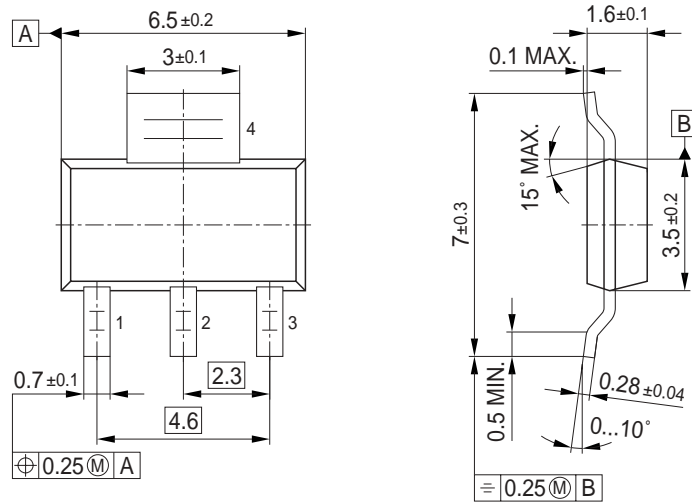
External resistance  $R_{BE} = f(T_A)^{**}$

$V_{CB} = V_{CEmax}$

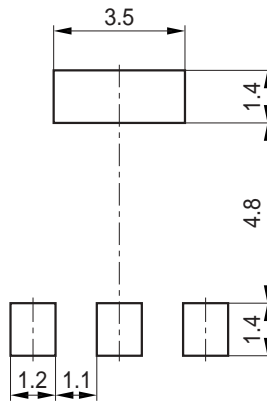
\*\*  $R_{BEmax}$  for thermal stability



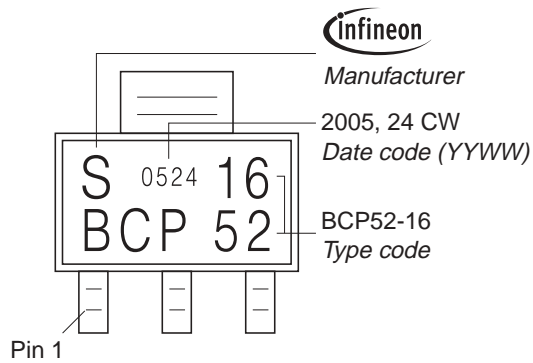
Package Outline



Foot Print

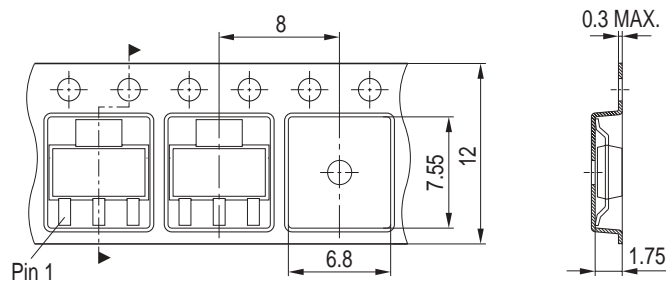


Marking Layout (Example)



Packing

Reel  $\varnothing 180 \text{ mm} = 1.000 \text{ Pieces/Reel}$   
 Reel  $\varnothing 330 \text{ mm} = 4.000 \text{ Pieces/Reel}$



Edition 2006-02-01

Published by

Infineon Technologies AG

81726 München, Germany

© Infineon Technologies AG 2007.

All Rights Reserved.

### **Attention please!**

The information given in this dokument shall in no event be regarded as a guarantee of conditions or characteristics ("Beschaffenheitsgarantie"). With respect to any examples or hints given herein, any typical values stated herein and/or any information regarding the application of the device, Infineon Technologies hereby disclaims any and all warranties and liabilities of any kind, including without limitation warranties of non-infringement of intellectual property rights of any third party.

### **Information**

For further information on technology, delivery terms and conditions and prices please contact your nearest Infineon Technologies Office ([www.infineon.com](http://www.infineon.com)).

### **Warnings**

Due to technical requirements components may contain dangerous substances. For information on the types in question please contact your nearest Infineon Technologies Office.

Infineon Technologies Components may only be used in life-support devices or systems with the express written approval of Infineon Technologies, if a failure of such components can reasonably be expected to cause the failure of that life-support device or system, or to affect the safety or effectiveness of that device or system.

Life support devices or systems are intended to be implanted in the human body, or to support and/or maintain and sustain and/or protect human life. If they fail, it is reasonable to assume that the health of the user or other persons may be endangered.