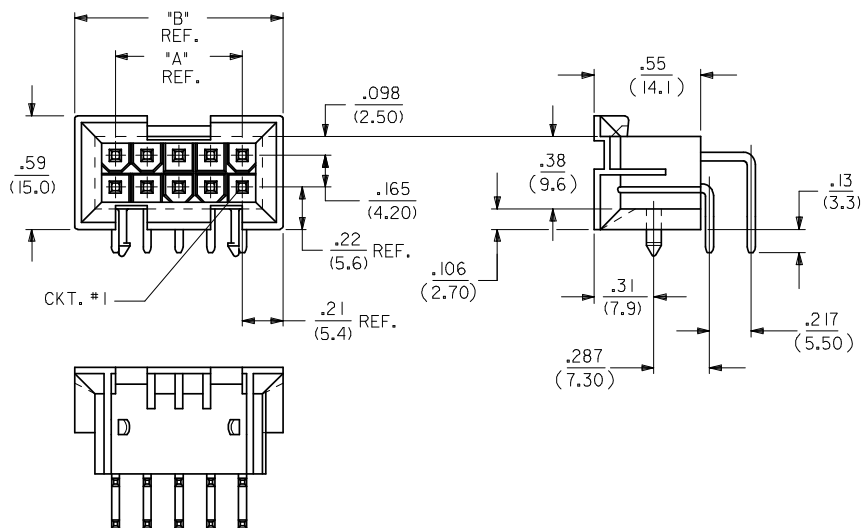


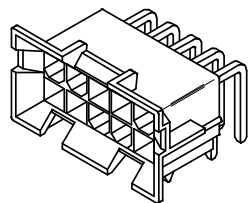
CIRCUIT SIZE	DIM. "A"	DIM. "B"
6	.331 (8.40)	.76 (19.2)
8	.496 (12.60)	.92 (23.4)
10	.661 (16.80)	1.09 (27.6)
12	.827 (21.00)	1.25 (31.8)
14	.992 (25.20)	1.42 (36.0)
16	1.157 (29.40)	1.58 (40.2)
18	1.323 (33.60)	1.75 (44.4)
20	1.488 (37.80)	1.91 (48.6)
22	1.654 (42.00)	2.08 (52.8)
24	1.819 (46.20)	2.24 (57.0)



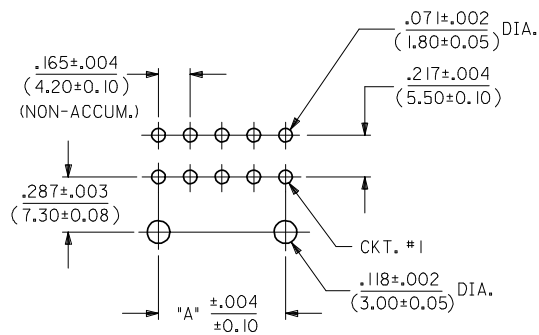
NOTES:

- MATERIAL: HOUSING: "A" = NYLON 6/6, U.L. 94V-2, COLOR: NATURAL. "B" = NYLON 6/6, U.L. 94V-0, COLOR: NATURAL. TERMINAL: BRASS ALLOY 260.
- TERMINAL PLATING:
 - .000100/(.00254) MIN. BRIGHT TIN OVER .000050/(.00127) MIN. NICKEL OVERALL.
 - .000030/(.00076) MIN. GOLD OVER .000050/(.00127) MIN. NICKEL OVERALL.
 - .000100/(.00254) MIN. MATTE TIN OVER .000050/(.00127) MIN. NICKEL OVERALL.
 - .000050/(.00127) MIN. GOLD OVER .000050/(.00127) MIN. NICKEL OVERALL.
 - .000030/(.00076) MIN. GOLD AND .000100/(.00254) MIN. MATTE TIN OVER .000050/(.00127) MIN. NICKEL OVERALL.

*THE PRIMARY SHIPPING CARTON WILL BE LABELED "COMPLIANT TO RoHS DIRECTIVE 2002/95/EC AND ELV ANNEX II OF DIRECTIVE 2000/53/EC." CARTONS WITHOUT THIS LABEL MAY CONTAIN PRODUCT WITH TIN-LEAD PLATING.
- PRODUCT SPECIFICATION AND PROCESSING PARAMETERS: SEE PS-5556-002
- PACKAGING SPECIFICATION: PK-42404-002.
- 4-24 CKT. PARTS MATE WITH MINI-FIT JR. RECEPTACLES #5557, #42385 AND #42474. 2 CKT. PART MATES WITH #42385 AND #42474 ONLY.
- PART ALLOWS FOR UP TO .100/(2.54) MISALIGNMENT WITH MATING RECEPTACLE IN ANY DIRECTION. SEE MATING CONNECTOR DRAWINGS FOR SPECIFIC ALLOWANCES.
- CONNECTOR ASSEMBLIES ARE NOT TO BE MATED OR UNMATED WHILE CIRCUITS ARE LIVE.
- A MAXIMUM TOLERANCE OF .050/(1.27) ALLOWS FOR 2 POINTS OF ELECTRICAL CONTACT. A MAXIMUM TOLERANCE OF .020/(.51) ALLOWS FOR 4 POINTS OF CONTACT.
- DISCOLORATION IN THE BANDOLIER CARRIER AREA OF THE PIN IS INHERENT TO THE PLATING PROCESS AND IS DUE TO THE MASKING EFFECT OF THE CARRIER. THIS DISCOLORATION IS IN A NON-FUNCTIONAL AREA OF THE PIN AND WILL NOT AFFECT THE PERFORMANCE OF THE HEADER ASSEMBLY.
- PART IS NOT DESIGNED FOR CURRENT SHARING.
- PART IS NOT INTENDED TO PROVIDE ANY ALIGNMENT OF CUSTOMER COMPONENTS OR MODULES, SUCH AS POWER SUPPLIES AND CHASSIS.
- PARTS CONFORM TO CLASS "B" REQUIREMENTS OF COSMETIC SPECIFICATION PS-45499-002.*



A-42404-****



RECOMMENDED HOLE LAYOUT FOR .070/(1.78) MAX. THICK P.C. BOARD VIEWED FROM COMPONENT SIDE

LEGEND:

BASE NUMBER: A-42404-****

CKT. SIZE: (02-24)

HOUSING MAT'L: (SEE NOTE 1)

TERMINAL PLATING: (SEE NOTE 2)

Part	Part	Part	Part	Part	Part
---B2, ---B4	42474-***2I, 5556-PBGS*P	94V-0	PHOS. BRZ.	GOLD	
---A2, ---A4	42474-***1I, 5556-PBGS*P	94V-2			
---B1, ---B3	42474-***2I, 5556-PBS*P	94V-0	PHOS. BRZ.	TIN	
---A1, ---A3	42474-***1I, 5556-PBS*P	94V-2			
---B2, ---B4	42474-***2I, 5556-GS*P	94V-0	BRASS	GOLD	
---A2, ---A4	42474-***1I, 5556-GS*P	94V-2			
---B1, ---B3	42474-***2I, 5556-S*P	94V-0	PHOS. BRZ.	TIN	
---A1, ---A3	42474-***1I, 5556-S*P	94V-2			
---B2, ---B4	A-42385-***D2	94V-0	PHOS. BRZ.	GOLD	
---A2, ---A4	A-42385-***C2	94V-2			
---B1, ---B3	A-42385-***D1	94V-0	PHOS. BRZ.	TIN	
---A1, ---A3	A-42385-***C1	94V-2			
---B2, ---B4	A-42385-***B2	94V-0	BRASS	GOLD	
---A2, ---A4	A-42385-***A2	94V-2			
---B1, ---B3	A-42385-***B1	94V-0	BRASS	TIN	
---A1, ---A3	A-42385-***A1	94V-2			

R.A. HEADER	MATING CONNECTOR	HSG. MAT'L.	TERM. MAT'L.	PLATING
A-42404				MATING CONNECTOR FEATURES

REVISION	DESCRIPTION	DATE
R1	REV	

QUALITY SYMBOLS	GENERAL TOLERANCES (UNLESS SPECIFIED)
▽=0	
▽=0	

DRAWN BY	DATE	CHECKED BY	DATE	APPROVED BY	DATE
RWK	2/7/89	RJF	2/7/89	RAS	2/7/89

SCALE	DESIGN UNITS	THIRD ANGLE PROJECTION
2:1	METRIC	

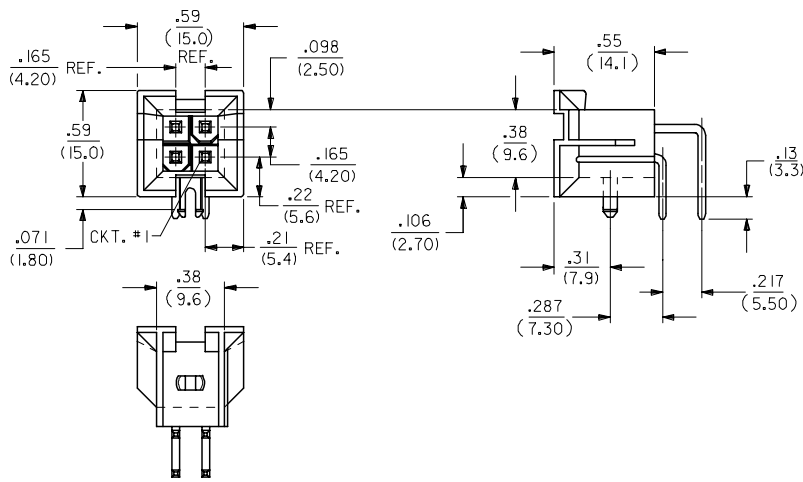
MINI-FIT JR. 2-24 CKT
RIGHT ANGLE HEADER ASSY
(BLIND MATE)

MOLEX MOLEX INCORPORATED

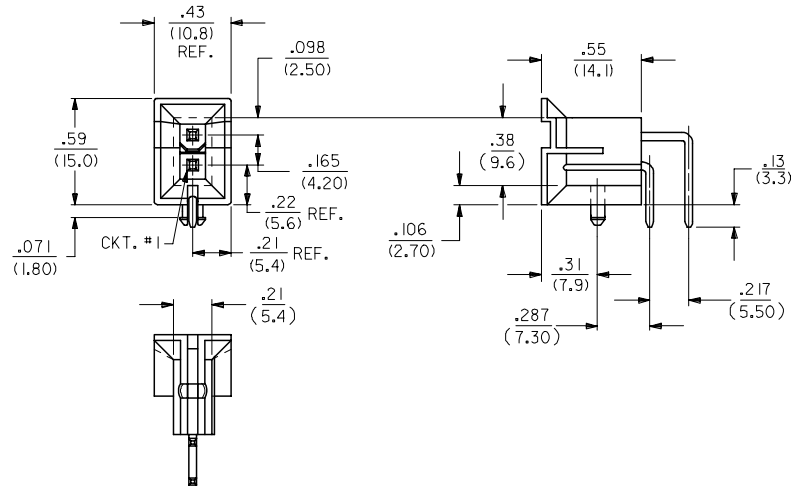
SEE SHTS 3&4 SDA-42404-****

THIS DRAWING CONTAINS INFORMATION THAT IS PROPRIETARY TO MOLEX INCORPORATED AND SHOULD NOT BE USED WITHOUT WRITTEN PERMISSION

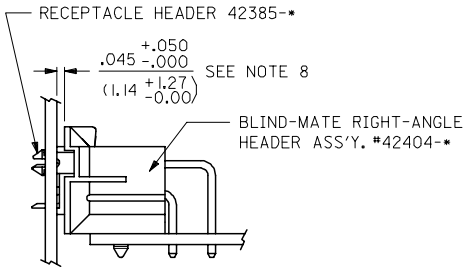
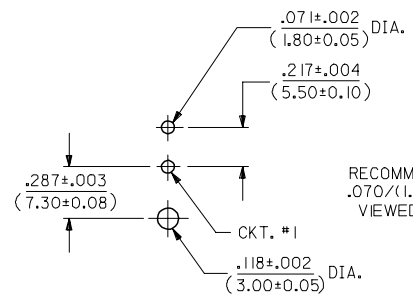
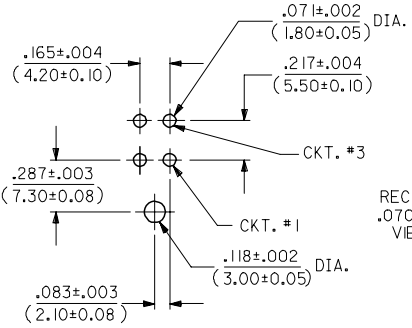
4	R
3	R1
2	R
1	R1



A-42404-04**



A-42404-02**



SEE SHEET 1 FC NO: UCP2006-1780 DRW:ADRAINOL 2006/02/03 CHKD:GPOLGAR 2006/02/03 APPR:ICOMERCJ 2006/02/06 REV:	QUALITY SYMBOLS ▽=0 ▽=0	GENERAL TOLERANCES (UNLESS SPECIFIED) mm INCH 4 PLACES ± --- ± --- 3 PLACES ± --- ± .01 2 PLACES ± 0.25 ± .015 1 PLACE ± 0.38 ± --- ANGULAR ±1/2°	DIMENSION STYLE IN/MM DRAWN BY DATE RWK 1989/02/07 CHECKED BY DATE RJF 1989/02/07 APPROVED BY DATE RAS 1989/02/07 MATERIAL NO. DOCUMENT NO.	SCALE 2:1 DESIGN UNITS METRIC THIRD ANGLE PROJECTION	TITLE MINI-FIT JR. 2-24 CKT RIGHT ANGLE HEADER ASSY (BLIND MATE)	SHEET NO. 2 OF 4
	DRAFT WHERE APPLICABLE MUST REMAIN WITHIN DIMENSIONS		SEE SHTS 3&4 SDA-42404-****		MOLEX MOLEX INCORPORATED	
	THIS DRAWING CONTAINS INFORMATION THAT IS PROPRIETARY TO MOLEX INCORPORATED AND SHOULD NOT BE USED WITHOUT WRITTEN PERMISSION					
	MOLEX MOLEX INCORPORATED					

J	13	12	11	10	9	8	7	6	5	4	3	2	1
I	HOUSING MATERIAL	HOUSING MATERIAL	HOUSING MATERIAL	HOUSING MATERIAL	HOUSING MATERIAL	HOUSING MATERIAL	HOUSING MATERIAL	HOUSING MATERIAL	HOUSING MATERIAL	HOUSING MATERIAL	HOUSING MATERIAL	HOUSING MATERIAL	HOUSING MATERIAL
H	ENG. NUMBER	ENG. NUMBER	ENG. NUMBER	ENG. NUMBER	ENG. NUMBER	ENG. NUMBER	ENG. NUMBER	ENG. NUMBER	ENG. NUMBER	ENG. NUMBER	ENG. NUMBER	ENG. NUMBER	ENG. NUMBER
G	PART NUMBER	PART NUMBER	PART NUMBER	PART NUMBER	PART NUMBER	PART NUMBER	PART NUMBER	PART NUMBER	PART NUMBER	PART NUMBER	PART NUMBER	PART NUMBER	PART NUMBER
F	PLATING (NOTE 5)	PLATING (NOTE 5)	PLATING (NOTE 5)	PLATING (NOTE 5)	PLATING (NOTE 5)	PLATING (NOTE 5)	PLATING (NOTE 5)	PLATING (NOTE 5)	PLATING (NOTE 5)	PLATING (NOTE 5)	PLATING (NOTE 5)	PLATING (NOTE 5)	PLATING (NOTE 5)
E	CT. SIZE	CT. SIZE	CT. SIZE	CT. SIZE	CT. SIZE	CT. SIZE	CT. SIZE	CT. SIZE	CT. SIZE	CT. SIZE	CT. SIZE	CT. SIZE	CT. SIZE
D	ENG. NUMBER	ENG. NUMBER	ENG. NUMBER	ENG. NUMBER	ENG. NUMBER	ENG. NUMBER	ENG. NUMBER	ENG. NUMBER	ENG. NUMBER	ENG. NUMBER	ENG. NUMBER	ENG. NUMBER	ENG. NUMBER
C	PART NUMBER	PART NUMBER	PART NUMBER	PART NUMBER	PART NUMBER	PART NUMBER	PART NUMBER	PART NUMBER	PART NUMBER	PART NUMBER	PART NUMBER	PART NUMBER	PART NUMBER
B	94V-0	94V-2	94V-0	94V-2	94V-0	94V-2	94V-0	94V-2	94V-0	94V-2	94V-0	94V-2	94V-0
A	02	02	02	02	02	02	02	02	02	02	02	02	02

J	13	12	11	10	9	8	7	6	5	4	3	2	1
I	HOUSING MATERIAL	HOUSING MATERIAL	HOUSING MATERIAL	HOUSING MATERIAL	HOUSING MATERIAL	HOUSING MATERIAL	HOUSING MATERIAL	HOUSING MATERIAL	HOUSING MATERIAL	HOUSING MATERIAL	HOUSING MATERIAL	HOUSING MATERIAL	HOUSING MATERIAL
H	ENG. NUMBER	ENG. NUMBER	ENG. NUMBER	ENG. NUMBER	ENG. NUMBER	ENG. NUMBER	ENG. NUMBER	ENG. NUMBER	ENG. NUMBER	ENG. NUMBER	ENG. NUMBER	ENG. NUMBER	ENG. NUMBER
G	PART NUMBER	PART NUMBER	PART NUMBER	PART NUMBER	PART NUMBER	PART NUMBER	PART NUMBER	PART NUMBER	PART NUMBER	PART NUMBER	PART NUMBER	PART NUMBER	PART NUMBER
F	PLATING (NOTE 5)	PLATING (NOTE 5)	PLATING (NOTE 5)	PLATING (NOTE 5)	PLATING (NOTE 5)	PLATING (NOTE 5)	PLATING (NOTE 5)	PLATING (NOTE 5)	PLATING (NOTE 5)	PLATING (NOTE 5)	PLATING (NOTE 5)	PLATING (NOTE 5)	PLATING (NOTE 5)
E	CT. SIZE	CT. SIZE	CT. SIZE	CT. SIZE	CT. SIZE	CT. SIZE	CT. SIZE	CT. SIZE	CT. SIZE	CT. SIZE	CT. SIZE	CT. SIZE	CT. SIZE
D	ENG. NUMBER	ENG. NUMBER	ENG. NUMBER	ENG. NUMBER	ENG. NUMBER	ENG. NUMBER	ENG. NUMBER	ENG. NUMBER	ENG. NUMBER	ENG. NUMBER	ENG. NUMBER	ENG. NUMBER	ENG. NUMBER
C	PART NUMBER	PART NUMBER	PART NUMBER	PART NUMBER	PART NUMBER	PART NUMBER	PART NUMBER	PART NUMBER	PART NUMBER	PART NUMBER	PART NUMBER	PART NUMBER	PART NUMBER
B	94V-0	94V-2	94V-0	94V-2	94V-0	94V-2	94V-0	94V-2	94V-0	94V-2	94V-0	94V-2	94V-0
A	02	02	02	02	02	02	02	02	02	02	02	02	02

SEE SHEET 1

FC NO: UCP2006-1780

DRWN:ADRNOL 2006/02/03

CHKD:GPOLGAR 2006/02/03

APPR:JCOMERCI 2006/02/06

REVISION SYMBOLS:

- Quality Symbol 1: $\nabla \Rightarrow \text{=}$
- Quality Symbol 2: $\nabla \Rightarrow \text{=}$

GENERAL TOLERANCES (UNLESS SPECIFIED)		DIMENSION STYLE		SCALE	DESIGN UNITS	THIRD ANGLE PROJECTION
4 PLACES	\pm ---	INCH	DATE	---	METRIC	
3 PLACES	\pm ---	IN/MM	2006/02/01	TITLE		
2 PLACES	\pm ---	DRAWN BY ADRNATNOL		MINI-FIT JR. 2-24 CKT		
1 PLACE	\pm ---	CHECKED BY GPOLGAR		RIGHT ANGLE HEADER ASSY		
ANGULAR $\pm 1/2^\circ$		APPROVED BY JCOMERCI		(BLIND MATE)		
DRAFT WHERE APPLICABLE MUST REMAIN WITHIN DIMENSIONS		MATERIAL NO.		molex MOLEX INCORPORATED		
		SEE CHARTS		DOCUMENT NO. SDA-42404-*****		
		THIS DRAWING CONTAINS INFORMATION THAT IS PROPRIETARY TO MOLEX INCORPORATED AND SHOULD NOT BE USED WITHOUT WRITTEN PERMISSION		SHEET NO. 4 OF 4		