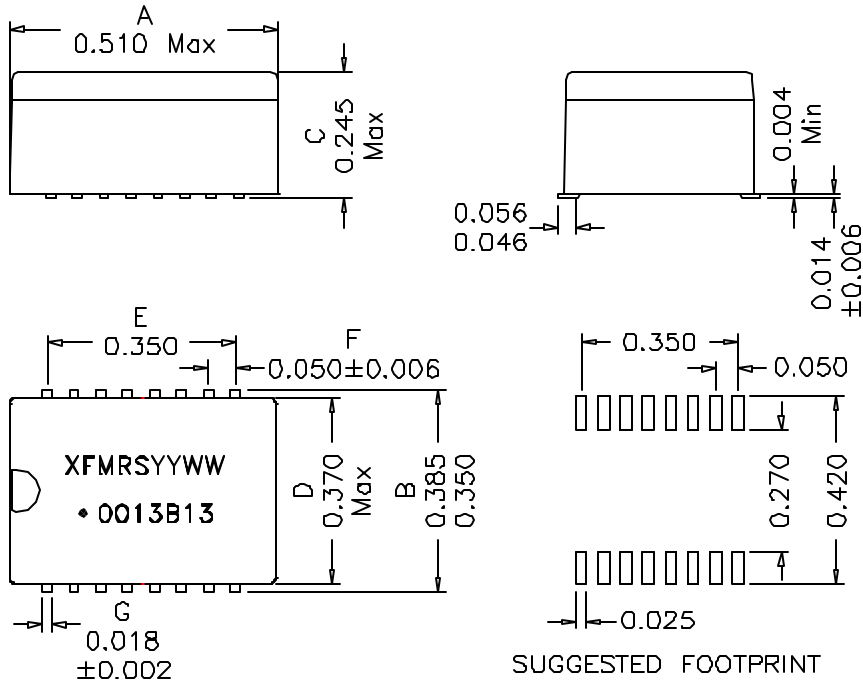
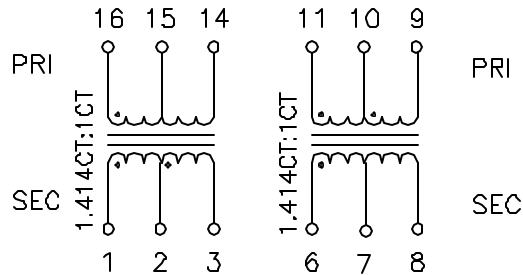


1. Mechanical Dimensions:



2. Schematic:



3. Electrical Specifications: @25°C

Isolation Voltage: 1500 Vrms

Turns Ratio: (16-15-14):(1-2-3)=1CT:1.414CT ±3%

(11-10-9):(6-7-8)=1CT:1.414CT ±3%

OCL: Pins 16-14 1.0mH Min @100KHz 50mV

Pins 11-9 1.0mH Min @100KHz 50mV

Cw/w: 35pF MAX. @100KHz 50mV (PRI/SEC)

PRI LL: 0.60uH MAX. @100KHz 50mV (SEC Shorted)

PRI DC Resistance: 0.70 Ohms Max

SEC DC Resistance: 0.90 Ohms Max

Q: Pins 16-14 5 Min @10KHz 50mV

Notes:

1. Solderability: Leads shall meet MIL-STD-202G, Method 208H for solderability.
2. Flammability: UL94V-0
3. ASTM oxygen index > 28%
4. Insulation System: Class F 155°C. UL file E151556
5. Operating Temperature Range: All listed parameters are to be within tolerance from -40°C to +85°C
6. Storage Temperature Range: -55°C to +125°C
7. Aqueous wash compatible
8. SMD Lead Coplanarity: ±0.004" (0.102mm)
9. Electrical and mechanical specifications 100% tested
10. RoHS Compliant Component

DOC. REV: B/2

XFMRS Inc. www.XFMRS.com	Title: TRANSFORMER		
	UNLESS OTHERWISE SPECIFIED TOLERANCES: .xxx ±0.010 Dimensions in Inch	P/N: XF0013B13	REV. B
SHT 1 OF 1	DWN.	Feng	Jan-06-12
	CHK.	YK Liao	Jan-06-12
	APP.	Joe Huff	Jan-06-12