

P-tec Corp. Tel:(866) 695 4162  
 2405 Commerce Circle Tel:(719) 589 3122  
 Alamosa CO 81101 Fax:(719) 589 3592  
 www.p-tec.net sales@p-tec.net



## PL00133 Series SMD LED 0603 Package

### Features

- \*Flat Lens Ultra Thin Package 1.6 x 0.8 x 0.4mm
- \*Low Current Requirements
- \*High Light Output
- \*Compatible with IR Solder-Process
- \*Industry Standard Footprint
- \*4000 pcs per Reel
- \*RoHS Compliant

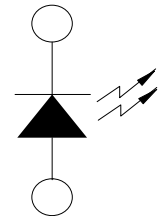
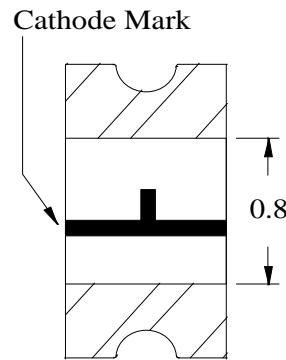
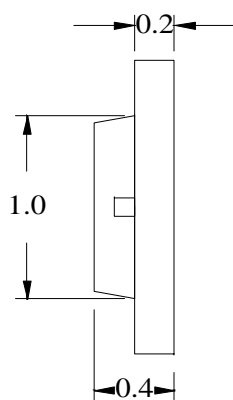
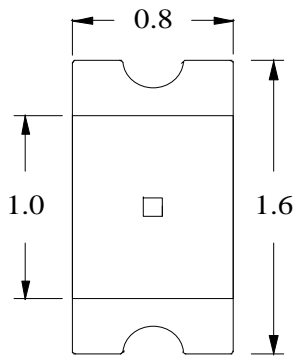
### Absolute Maximum Ratings at $T_A = 25^\circ\text{C}$

Power Dissipation.....	78mA
Reverse Voltage (<math><10\mu\text{A}</math>) .....	5.0V
Max Forward Current .....	30mA
Peak Forward Current(1/10 Duty Cycle, 0.1ms Pulse Width).....	100mA
Operating Temperature Range .....	-40°C to +85°C
Storage Temperature Range .....	-40°C to +85°C
Reflow Soldering Temperature.....	260°C for 10 seconds

### Electrical & Optical Characteristics at $T_A = 25^\circ\text{C}$

Part Number	Emitting Color	Chip Material	Dominant Wave Length	Peak Wave Length	Viewing Angle 2 $\theta$ 1/2	Forward Voltage @20mA (V)		Luminous Intensity @20mA (mcd)	
						Typ	Max	Min	Typ
Water Clear Lens			nm	nm	Deg	Typ	Max	Min	Typ
PL00133-WCG17	Ultra-Bright Yellow-Green	AlInGaP	573	575	130°	2.2	2.6	28.0	45.0

Package Dimensions are in **Millimeters**. Tolerance is  $\pm 0.15\text{mm}$  unless otherwise specified.



### Recommended Soldering Pad Layout

