

# Customer Information Sheet

DRAWING No.: M50-315XX42P

SHEET 2 OF 2

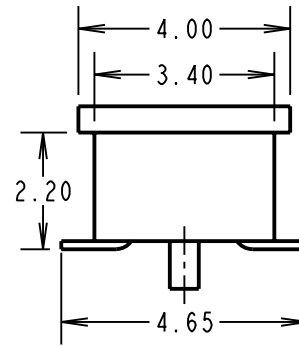
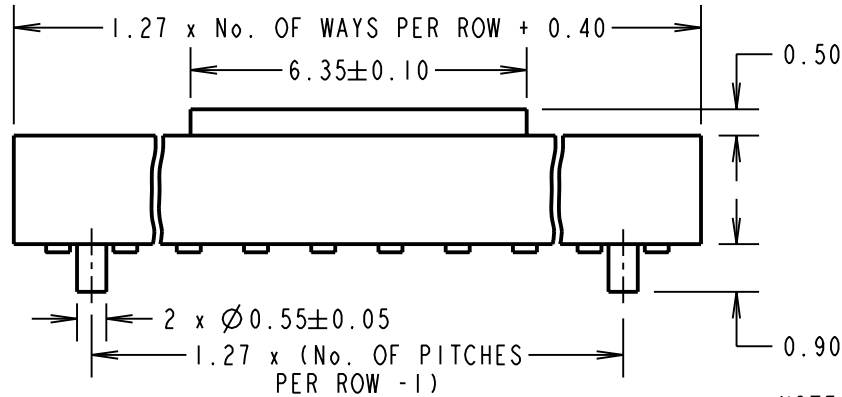
IF IN DOUBT - ASK

(C)

NOT TO SCALE

THIRD ANGLE PROJECTION

ALL DIMENSIONS IN mm

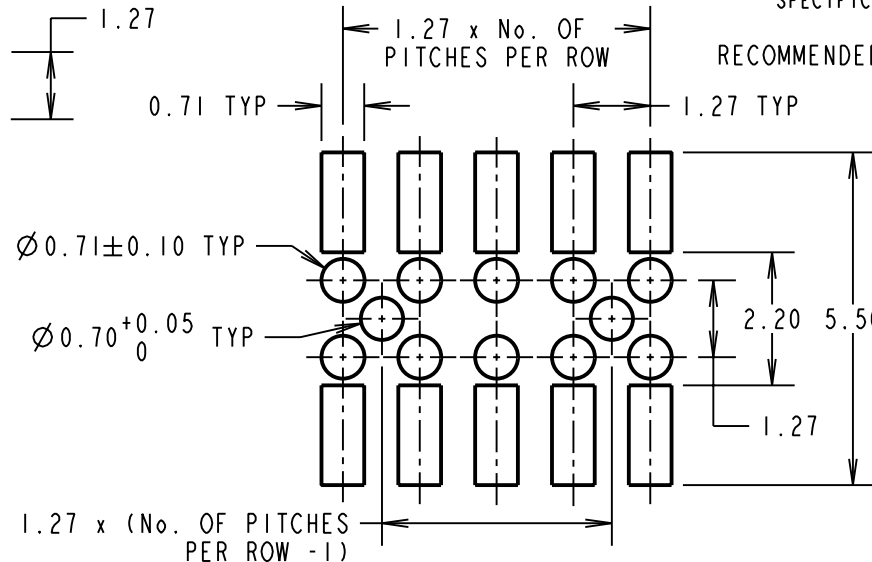
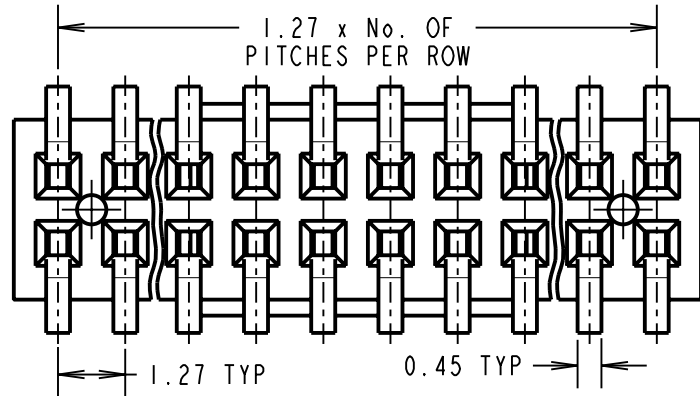


**SPECIFICATIONS:**

- MATERIAL:**  
 MOULDING = 30% GLASS-FILLED NYLON 6T, BLACK UL94V-0  
 CONTACT = PHOSPHOR BRONZE
- FINISH:**  
 CONTACT = GOLD ON CONTACT AREA, 100% TIN ON TAILS
- ELECTRICAL:**  
 CURRENT RATING = (ALL CONTACTS ARE ELECTRICALLY LOADED) = 1A  
 CONTACT RESISTANCE = 15 MILLIOHMS MAX  
 INSULATION RESISTANCE = 1000 MEGOHMS MIN @ 250V  
 DIELECTRIC WITHSTANDING = 1000V AC MIN (1 MINUTE)
- MECHANICAL:**  
 CONTACT RETENTION = 2.5N MIN.  
 INSERTION FORCE = 2.0N MAX  
 WITHDRAWAL FORCE = 0.3N MIN  
 SOLDERABILITY = 260°C FOR 3 SECONDS  
 DURABILITY = 25 CYCLES
- ENVIRONMENTAL:**  
 OPERATING TEMPERATURE = -55°C TO +105°C
- PACKING:**  
 TUBE

FOR COMPLETE SPECIFICATION, SEE COMPONENT SPECIFICATION C029XX (LATEST ISSUE)

- NOTES:**  
 1. ALL TOLERANCES ARE ±0.25 UNLESS OTHERWISE STATED.



**RECOMMENDED PCB LAYOUT**

ORDER CODE:

**M50-315XX42P**

No. OF WAYS PER ROW  
 03 TO 50

FINISH:  
 SELECTIVE GOLD + 100% TIN

RA	6	06.10.09	10516
NAME	ISS.	DATE	C/NOTE
APPROVED:		R. ADDE	
CHECKED:		M.G. PLESTED	
DRAWN:		J. EVANS	
CUSTOMER REF.:			
ASSEMBLY DRG:			

**HARWIN**

HARWIN USA TEL: 603 893 5376 FAX: 603 893 5396 mis@harwin.com	HARWIN Europe (UK) TEL: 023 9231 4545 FAX: 023 9231 4590 mis@harwin.co.uk	HARWIN Asia TEL: +65 6 779 4909 FAX: +65 6 779 3868 mis@harwin.com.sg
--	--	--

THIS DRAWING AND ANY INFORMATION OR DESCRIPTIVE MATTER SET OUT HEREON ARE CONFIDENTIAL AND COPYRIGHT PROPERTY OF THE HARWIN GROUP AND MUST NOT BE DISCLOSED, LOANED, COPIED OR USED FOR MANUFACTURING, TENDERING OR FOR ANY OTHER PURPOSE WITHOUT THEIR WRITTEN PERMISSION.

**TOLERANCES**  
~~X = ±1mm  
 X.X = ±0.25mm  
 X.XX = ±0.10mm  
 X.XXX = ±0.01mm  
 ANGLES = ±5°  
 UNLESS STATED~~

**MATERIAL:**  
 SEE ABOVE

**FINISH:**  
 SEE ABOVE

**S/AREA:**  
 mm<sup>2</sup>

**TITLE:**  
 1.27mm PITCH DIL VERTICAL SMT SOCKET ASSY (P&P CAP)

**DRAWING NUMBER:**  
**M50-315XX42P**

SHT  
 3 OF 3