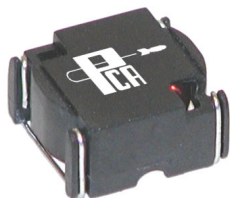


# Surface Mount Power Inductor

## EPI B20 Series

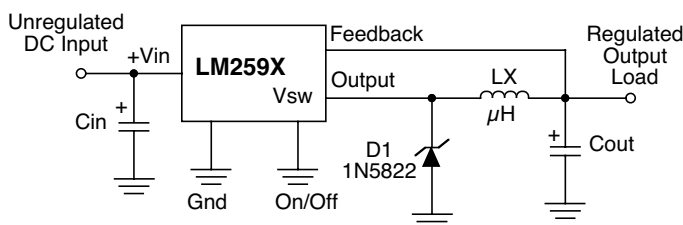


- Optimized for National's LM259X Series
- Low loss material ensures operation in high frequency switching converters, such as Buck, Boost or as output averaging filter inductor
- Also suitable for use in high quality filter applications
- 150 KHz & 500 KHz Switching Frequency
- Low Cost Inductor

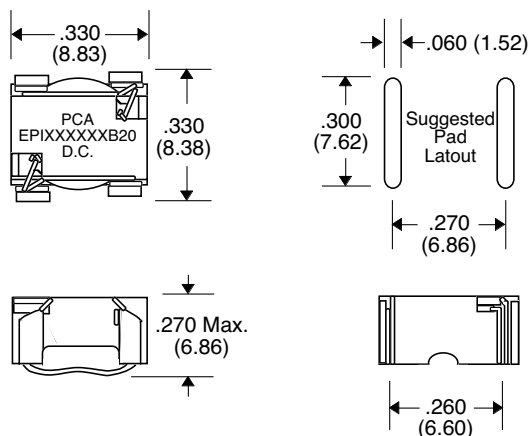
### Primary Specification

Part Number	National Semiconductor Chip	Induct. ( $\mu\text{H} \pm 20\%$ ) @ 0 Adc	DCR ( $\Omega$ Typ.)	Induct. ( $\mu\text{H} 15\%$ ) @ Idc	Idc (mA)	Core Loss		Vt1 (V- $\mu\text{Sec}$ ) 150 KHz	Vt2 (V- $\mu\text{Sec}$ ) 260 KHz	Temp.Rise	
						@ Vt1 (mW)	@ Vt2 (mW)			@ Vt1 $^{\circ}\text{C}$ (Typ.)	@ Vt2 $^{\circ}\text{C}$ (Typ.)
EPI1L0342B20	---	1.05	.011	0.9	3400	---	6.5	---	0.5	---	54
EPI4L7122B20	---	5.2	.051	4.7	1200	---	23.4	---	2.0	---	40
EPI6L8951B20	---	7.5	.061	6.8	950	---	23.4	---	2.4	---	34
EPI100801B20	---	10.9	.094	10	800	---	23.4	---	3.0	---	35
EPI150701B20	---	16.8	.148	15	700	---	23.4	---	3.6	---	40
EPI220601B20	LM259X-L7	25	.224	22	600	23.4	---	6.6	---	42	---
EPI330441B20	LM259X-L6	36.5	.343	33	440	23.4	---	8.0	---	38	---
EPI470371B20	LM259X-L5	51.6	.408	47	370	23.4	---	9.3	---	34	---
EPI680321B20	LM259X-L4	75	.625	68	320	23.4	---	11.3	---	37	---
EPI101261B20	LM259X-L3	110	.958	100	260	23.4	---	14	---	37	---
EPI151211B20	LM259X-L2	166	1.476	150	210	23.4	---	17	---	37	---
EPI221181B20	LM259X-L1	248	2.225	220	180	23.4	---	20.6	---	40	---

### Application



### Package B20



**Note:** Coplanarity within .005" Max.

Unless Otherwise Specified Dimensions are in Inches /mm  $\pm .010 / .25$