

IEC Appliance Inlet C14 with Filter, Fuseholder 2-pole, Line Switch 2-pole

Standard- or Medical-Filter



on phase-out



Description

- Panel Mount:
Screw-on mounting from front side
- 4 Functions:
Appliance Inlet Protection class 1, Line Switch 2-pole, Fuseholder for fuse-links 5 x 20 mm 2-pole, Line filter in standard and medical version
- Quick connect terminals 6.3 x 0.8 mm

Approvals

- VDE License Number: 40004665
- UL License Number: E72928

Characteristics

- Compact design with optimal shielding
- All single elements are already wired
- Plug removal necessary for fuse-link replacement
If the power entry module is installed as normal, it is not possible to touch any live parts with the test-finger according to IEC60529
- Fuse drawer meets requirements of medical standard IEC/EN 60601-1
The fuseholder is accessible from the equipment front
- With EMC-shield
- Qualified for use in equipment according IEC/EN 60950

Other versions on request

- Medical version M80

References

[General Product Information](#)

Weblinks

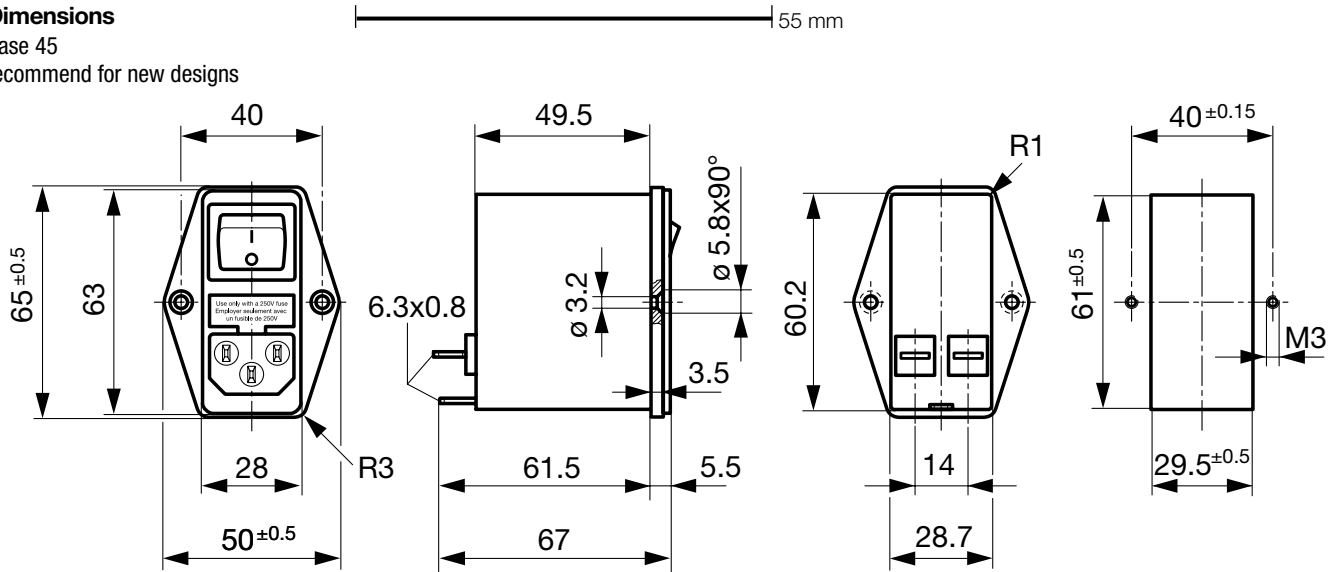
[Approvals](#), [RoHS](#), [CHINA-RoHS](#), [Mating Connectors](#), [Distributor-Stock-Check](#), [Accessories](#)

Technical Data

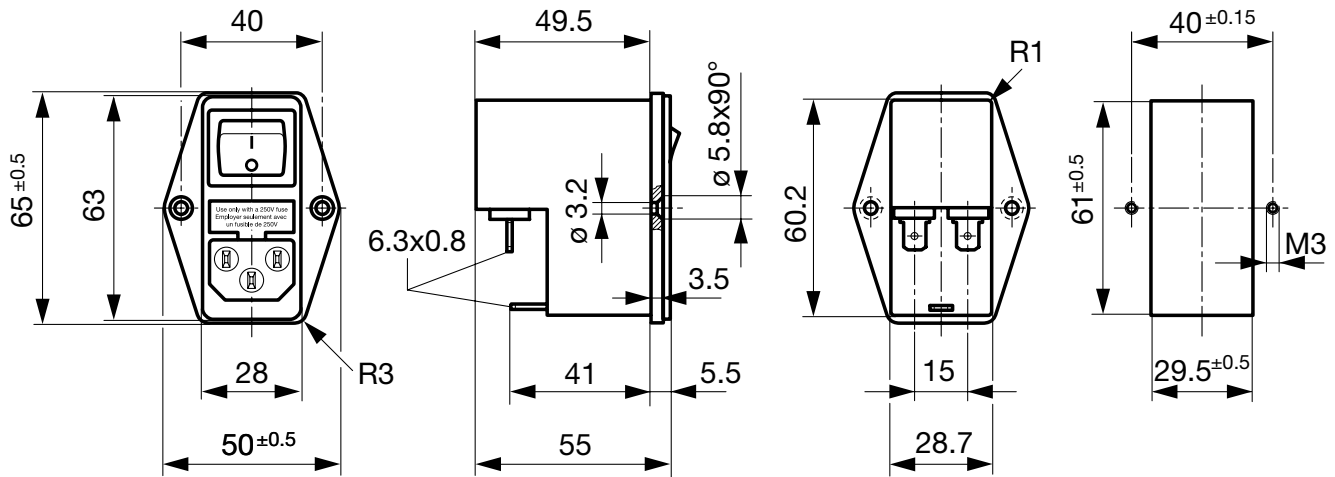
Ratings IEC	1 - 10A @ Ta 40 °C / 250 VAC; 50Hz	Appliance-Inlet/-Outlet	C14 acc. to IEC/EN 60320-1, UL 498, CSA C22.2 no. 42 (for cold conditions) pin-temperature 70 °C, 10A, Protection Class 1
Ratings UL/CSA	1 - 10A @ Ta 40 °C / 125 VAC; 60Hz	Fuseholder	2-pole, Shocksafe category PC2 acc. to IEC 60127-6, for fuse-links 5 x 20mm
Leakage Current	standard < 0.25 mA (250 V / 60Hz) medical < 5 µA (250 V / 60 Hz)	Rated Power Acceptance @ Ta 23 °C	5 x 20: 1.6W (2-pole)
Dielectric Strength	> 1.7 kVDC between L-N > 2.7 kVDC between L/N-PE Test voltage (2 sec)	Power Acceptance @ Ta > 23°C	Admissible power acceptance at higher ambient temperature see derating curves
Allowable Operation Temp.	-25 °C to 85 °C	Line Switch	Rocker switch 2-pole, non-illuminated, acc. to IEC 61058-1 Technical details
Climatic Category	25/085/21 acc. to IEC 60068-1	Line Filter	Standard and Medical Version, IEC 60939, IEC 60601-1, UL 1283, UL 544, EN 133 200, CSA C22.2 no. 8 Technical details
Degree of Protection	from front side IP 40 acc. to IEC 60529	MTBF	> 1'700'000h acc. to MIL-HB-217 F
Protection Class	Suitable for appliances with protection class 1 acc. to IEC 61140		
Terminal	Quick connect terminals 6.3 x 0.8 mm		
Panel Thickness s	Screw: max 8 mm Mounting screw torque max 0.5Nm		
Material: Housing	Thermoplastic, black, UL 94V-0		

Dimensions

Case 45
recommend for new designs



Case 50
on phase-out



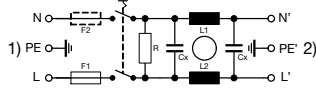
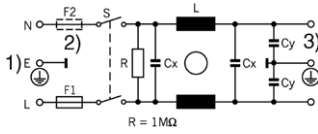
Technical Data of Filter-Components

Rated Current [A]	Filter-Type	Inductances L [mH]	Capacitance CX [nF]	Capacitance CY [nF]	R [M Ω]
1	Standard Version	2 x 10	68	2.2	1
2	Standard Version	2 x 4	68	2.2	1
4	Standard Version	2 x 1.5	68	2.2	1
6	Standard Version	2 x 0.8	68	2.2	1
10	Standard Version	2 x 0.3	68	2.2	1
1	Medical Version (M5)	2 x 10	68	-	1
2	Medical Version (M5)	2 x 4	68	-	1
4	Medical Version (M5)	2 x 1.5	68	-	1
6	Medical Version (M5)	2 x 0.8	68	-	1
10	Medical Version (M5)	2 x 0.3	68	-	1

Diagrams

Standard version

Medical version

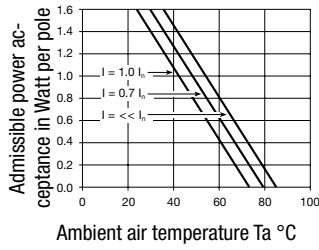


- 1) Line
- 2) only FKI
- 3) Load

- 1) Line
- 2) Load

Derating Curves

2-pole

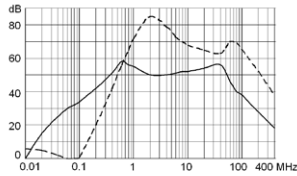


Attenuation Loss

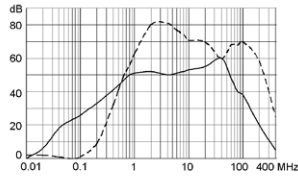
--- differential mode ____ common mode

Standard version

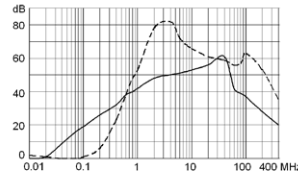
1 A



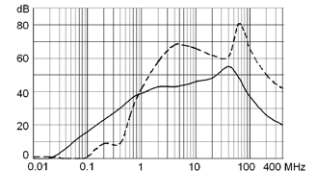
2 A



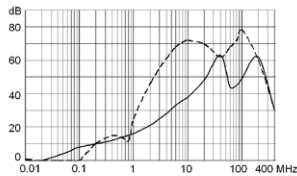
4 A



6 A

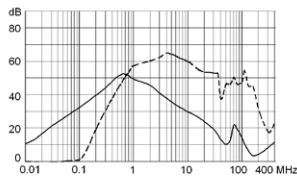


10 A

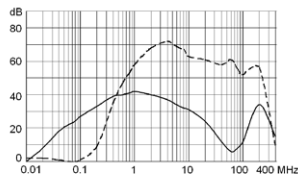


Medical version (M5)

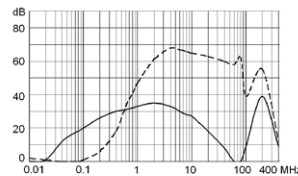
1 A



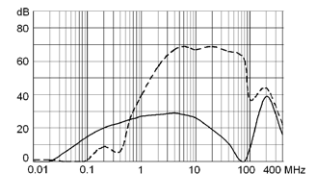
2 A



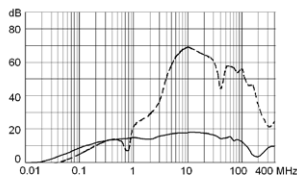
4 A



6 A



10 A



Variants

Socket and fuse drawer included

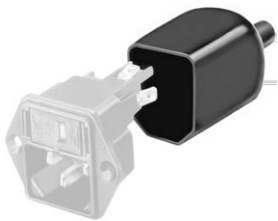
Type	Rated Current [A]	Filter-Type	Fuseholder	Line Switch	Housing	Material: Housing	Comment	Order Number
FKI	1	Standard Version	2-pole	2-pole	45	Aluminum	-	4304.4061
FKI	2	Standard Version	2-pole	2-pole	45	Aluminum	-	4304.4062
FKI	4	Standard Version	2-pole	2-pole	45	Aluminum	-	4304.4063
FKI	6	Standard Version	2-pole	2-pole	45	Aluminum	-	4304.4064
FKI	10	Standard Version	2-pole	2-pole	45	Aluminum	-	4304.4065
FKI	1	Medical Version (M5)	2-pole	2-pole	45	Aluminum	-	4304.4091
FKI	2	Medical Version (M5)	2-pole	2-pole	45	Aluminum	-	4304.4092
FKI	4	Medical Version (M5)	2-pole	2-pole	45	Aluminum	-	4304.4092
FKI	6	Medical Version (M5)	2-pole	2-pole	45	Aluminum	-	4304.4094
FKI	10	Medical Version (M5)	2-pole	2-pole	45	Aluminum	-	4304.4095
FKI	1	Standard Version	2-pole	2-pole	50	Nickel plated steel	1)	4304.4021
FKI	2	Standard Version	2-pole	2-pole	50	Nickel plated steel	1)	4304.4022
FKI	4	Standard Version	2-pole	2-pole	50	Nickel plated steel	1)	4304.4023
FKI	6	Standard Version	2-pole	2-pole	50	Nickel plated steel	1)	4304.4024
FKI	10	Standard Version	2-pole	2-pole	50	Nickel plated steel	1)	4304.4025
FKI	1	Medical Version (M5)	2-pole	2-pole	50	Nickel plated steel	1)	4304.4066
FKI	2	Medical Version (M5)	2-pole	2-pole	50	Nickel plated steel	1)	4304.4067
FKI	4	Medical Version (M5)	2-pole	2-pole	50	Nickel plated steel	1)	4304.4068
FKI	6	Medical Version (M5)	2-pole	2-pole	50	Nickel plated steel	1)	4304.4069
FKI	10	Medical Version (M5)	2-pole	2-pole	50	Nickel plated steel	1)	4304.4070

1) Versions with nickel plated steel enclosure are on phase-out. For new designs we recommend the versions with aluminum enclosure.

Packaging unit 10 Pcs

Accessories

Description



Assorted Covers
Rear Cover

0859.0074

Mating Outlets/Connectors

Category / Description

Appliance Outlet Overview complete



IEC Appliance Outlet F, Screw-on Mounting, Front Side, Solder or Quick-connect Terminal	4787
IEC Appliance Outlet F, Snap-in Mounting, Front Side, Solder or Quick-connect Terminal	4788
IEC Appliance Outlet F or H, Screw-on Mounting, Front Side, Solder, PCB or Quick-connect Terminal	5091
IEC Appliance Outlet F or H, Screw-on Mounting, Front Side, Solder or Quick-connect Terminal	5092

Appliance Outlet further types to FKI

Connector Overview complete



IEC Connector C15, Rewireable, Straight	0101
IEC Connector C15A, Rewireable, Straight	0102
IEC Connector C15A, Rewireable, Straight	0102-G
IEC Connector C15A, Rewireable, Angled	0112
IEC Connector C13, Rewireable, Angled	4012

Connector further types to FKI

...

Category / Description

[Power Cord Overview complete](#)



Power Cord with IEC Connector C13, Angled	0311
Power Cord with IEC Connector C13, Angled	3011
Power Cord with IEC Connector C13, Angled	3012
Power Cord with IEC Connector C13, Angled	3013
Power Cord with IEC Connector C13	3020
Power Cord further types to FKI	...