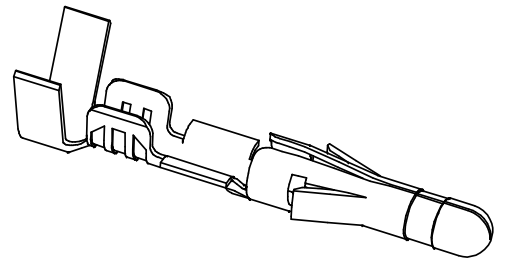
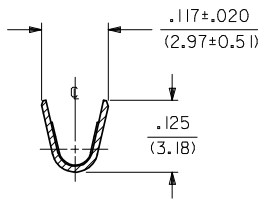
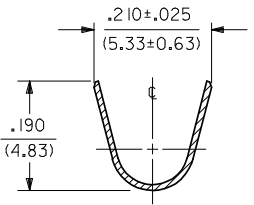
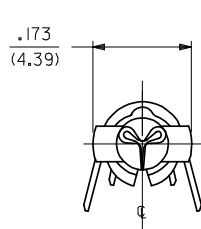
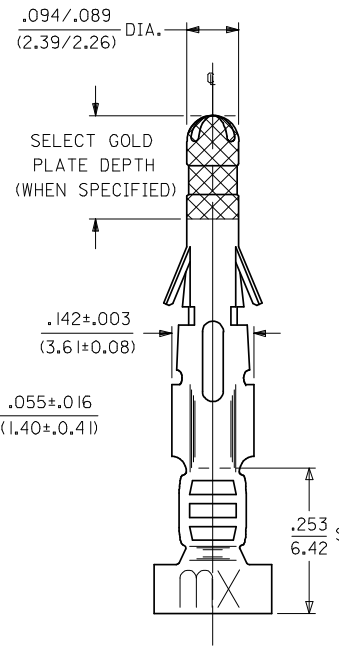
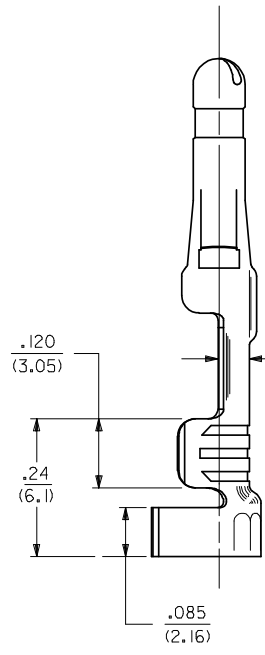
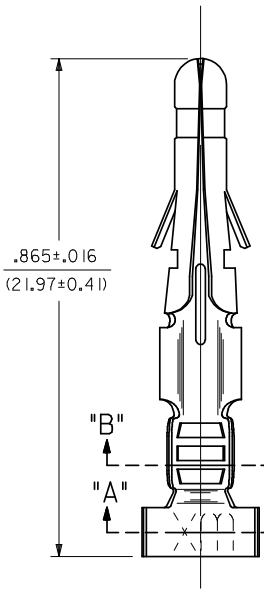


PART NO.	ENG. NO.
02-09-2103	1190-(P901)L
02-09-2101	1190-(P901)
02-09-6110	1190-(591)L
02-09-6101	1190-(591)
02-09-6106	1190-(550)L
02-09-6100	1190-(550)



SECT. "A-A"

SECT. "B-B"



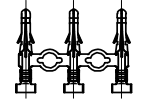
SELECT GOLD PLATE DEPTH (WHEN SPECIFIED)

SEE NOTE

- NOTES:
- MATERIAL:
CARTRIDGE BRASS
 - FINISH CODES:
901 HOT TIN DIP .000020/(0.00051) MIN.
591 SELECT GOLD PLATE .000050/(0.00127) MIN. IN CONTACT AREA,
OVER .000050/(0.00127) MIN. NICKEL OVERALL
WITH .000010/(0.00025) MAX. GOLD FLASH OVERALL.
550 SELECT GOLD PLATE .000015/(0.00038) MIN. IN CONTACT AREA,
OVER .000030/(0.00076) MIN. NICKEL OVERALL
WITH .000010/(0.00025) MAX. GOLD FLASH OVERALL.
 - PRODUCT SPECIFICATION: PS-43660-9999
 - PACKAGING SPECIFICATION: PK-1190-001
 - INSERTION FORCE: 3.5 LBS. MAX. WHEN TERMINAL IS INSERTED INTO .093 SERIES HOUSING.
 - RETENTION: 20 LBS. MIN. FROM HOUSING.
 - DIMENSION FROM THE END OF THE TERMINAL TO THE END OF THE BRUSH ON THE WIRE CRIMPED INTO THE TERMINAL.
 - TERMINAL FOR USE WITH .093/(2.36) SERIES HOUSINGS AND WILL ACCEPT 14 THRU 20 AWG WIRE.

LEGEND

1190-(****)*
 P=PREPLATE
 BLANK=POSTPLATE
 FORM
 BLANK=CHAIN
 L=LOOSE
 FINISH CODE



CHAIN FORM FULL SCALE

ADD PK SPEC EC NO: UCP2009-0180 DRWG:GAVRILL 2008/08/15 CHKD:AELHAG 2008/08/22 APPR:FSM LTH 2008/08/22 BS1	DESCRIPTION CRIMP TERMINAL, MALE	QUALITY SYMBOLS	GENERAL TOLERANCES (UNLESS SPECIFIED)	DIMENSION STYLE	SCALE	DESIGN UNITS	THIRD ANGLE PROJECTION																																		
		$\nabla=0$ $\nabla=0$	<table border="1"> <thead> <tr> <th></th> <th>mm</th> <th>INCH</th> </tr> </thead> <tbody> <tr> <td>4 PLACES</td> <td>± .---</td> <td>± .---</td> </tr> <tr> <td>3 PLACES</td> <td>± .---</td> <td>± .010</td> </tr> <tr> <td>2 PLACES</td> <td>± 0.25</td> <td>± .014</td> </tr> <tr> <td>1 PLACE</td> <td>± 0.13</td> <td>± .---</td> </tr> </tbody> </table>		mm	INCH	4 PLACES	± .---	± .---	3 PLACES	± .---	± .010	2 PLACES	± 0.25	± .014	1 PLACE	± 0.13	± .---	<table border="1"> <thead> <tr> <th>DRAWN BY</th> <th>DATE</th> <th>TITLE</th> </tr> </thead> <tbody> <tr> <td>GEP</td> <td>10/26/87</td> <td>CRIMP TERMINAL, MALE</td> </tr> <tr> <th>CHECKED BY</th> <th>DATE</th> <th></th> </tr> <tr> <td>RW</td> <td>10/26/87</td> <td>.093/(2.36) DIA.</td> </tr> <tr> <th>APPROVED BY</th> <th>DATE</th> <th></th> </tr> <tr> <td>RAS</td> <td>10/26/87</td> <td>FOR 14 THRU 20 AWG. WIRE</td> </tr> </tbody> </table>	DRAWN BY	DATE	TITLE	GEP	10/26/87	CRIMP TERMINAL, MALE	CHECKED BY	DATE		RW	10/26/87	.093/(2.36) DIA.	APPROVED BY	DATE		RAS	10/26/87	FOR 14 THRU 20 AWG. WIRE	IN/MM	6:1	INCH	
			mm	INCH																																					
		4 PLACES	± .---	± .---																																					
3 PLACES	± .---	± .010																																							
2 PLACES	± 0.25	± .014																																							
1 PLACE	± 0.13	± .---																																							
DRAWN BY	DATE	TITLE																																							
GEP	10/26/87	CRIMP TERMINAL, MALE																																							
CHECKED BY	DATE																																								
RW	10/26/87	.093/(2.36) DIA.																																							
APPROVED BY	DATE																																								
RAS	10/26/87	FOR 14 THRU 20 AWG. WIRE																																							
	ANGULAR ±1/2°	SEE CHART	MATERIAL NO.	DOCUMENT NO.	MOLEX INCORPORATED		SHEET NO.																																		
	DRAFT WHERE APPLICABLE MUST REMAIN WITHIN DIMENSIONS	SIZE	THIS DRAWING CONTAINS INFORMATION THAT IS PROPRIETARY TO MOLEX INCORPORATED AND SHOULD NOT BE USED WITHOUT WRITTEN PERMISSION				1 OF 1																																		