

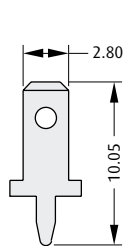
# PCB Terminals

## Blade Terminals

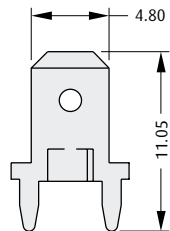
- Available in vertical or horizontal configurations.
- Terminals packaged loose or on reels for efficient machine insertion with our range of automatic and semi automatic insertion machines.
- Order codes shown are for reeled components. Contact Sales for loose order codes and availability.
- Custom Terminals are available.
- Anti-rocking feature on S405 and S409 terminals.



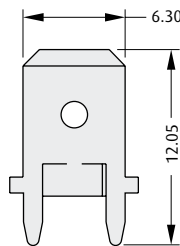
### VERTICAL



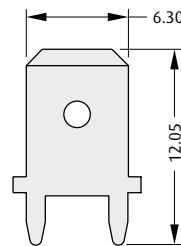
**S401-XX**



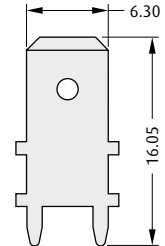
**S405-XX**



**S409-XX**

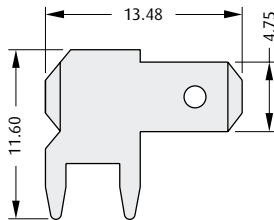


**S411-XX**

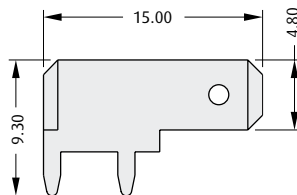


**S420-XX**

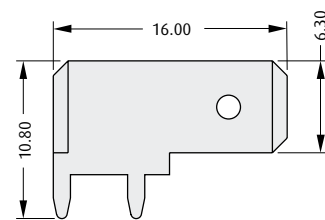
### HORIZONTAL



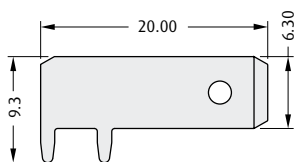
**S490-XX**



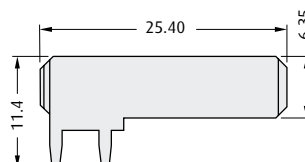
**S505-XX**



**S509-XX**



**S523-XX**



**S526-XX**

#### RECOMMENDED PCB THICKNESS

Others	1.6mm
S490-XX, S526-XX	2.4mm

#### RECOMMENDED PCB HOLE SIZE

S490-XX	Ø1.44mm
Others	Ø1.25mm

### HOW TO ORDER

**S XXX - XX**

SERIES CODE

TYPE (See table above)

FINISH

06	Tin/Lead	
46	Tin	

All dimensions in mm.

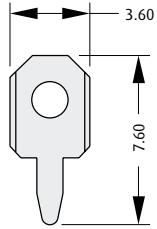
[www.harwin.com](http://www.harwin.com)



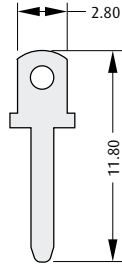
# PCB Terminals

## Blade Terminals

### TEST POINT

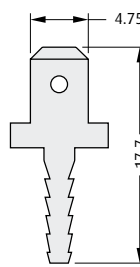


**S424-XX**

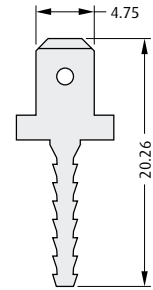


**S440-XX**

### BOBBIN

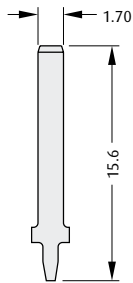


**S485-XX**

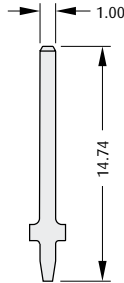


**S486-XX**

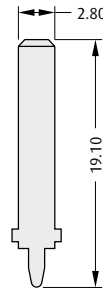
### AUTOMOTIVE



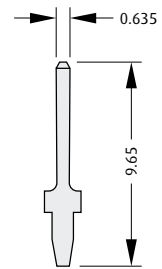
**S418-XX**



**S419-XX**

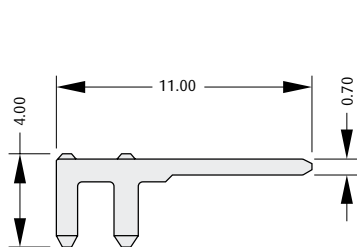


**S423-XX**

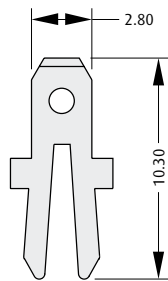


**S470-XX**

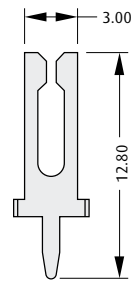
### SPECIAL APPLICATIONS



**S481-XX**



**S417-XX**



**S422-XX**

#### RECOMMENDED PCB THICKNESS

<b>S440-XX</b>	6mm Max	<b>S417-XX</b>	2.4mm Max
<b>Others</b>	1.6mm	<b>S422-XX</b>	2.4mm Max

#### RECOMMENDED PCB HOLE SIZE

<b>S424-XX</b>	Ø1.25mm	<b>S440-XX</b>	Ø1.35mm
<b>S481-XX</b>	1.00mm	<b>S417-XX</b>	2.80 x 1.00mm
<b>S485-XX</b>	2.40mm	<b>Others</b>	1.02mm
<b>S486-XX</b>	2.40mm		

### HOW TO ORDER

**S XXX - XX**

**SERIES CODE**

**TYPE (See table above)**

**FINISH**

<b>06</b>	Tin/Lead	
<b>46</b>	Tin	

[www.harwin.com](http://www.harwin.com)

All dimensions in mm.

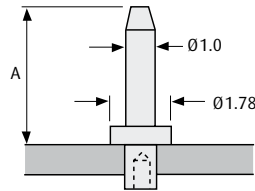


**HARWIN**

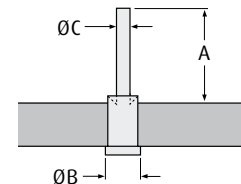
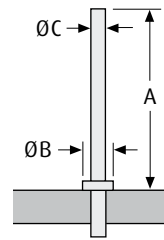
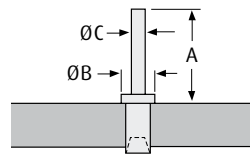
# PCB Terminals

## Turned Terminals

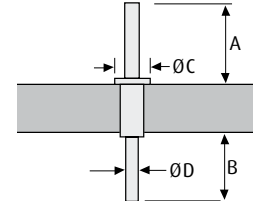
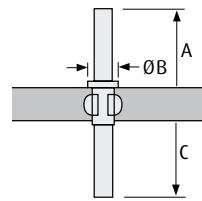
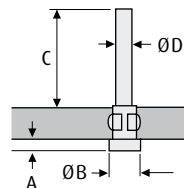
- Material: brass with tin plating.
- For swaging tool change order code to prefix Z and suffix 00 (example Z2174-00).
- Contact [technical@harwin.com](mailto:technical@harwin.com) for alternative finishes and custom designs.



ORDER CODE	H2174-01	H2175-01	H2173-01	H2176-01	H2170-01
A	4.30mm	5.00mm	8.10mm	9.50mm	13.20mm
PANEL THICKNESS	1.6mm	1.6mm	1.6mm	1.6mm	1.6mm
MOUNTING HOLE Ø	1.04/1.14mm	1.04/1.14mm	1.04/1.14mm	1.04/1.14mm	1.04/1.14mm



ORDER CODE	H2101A01	H2105A01	H2106A01	H3108-01	H2101B01	H2105B01
A	6.5mm	4.5mm	4.5mm	5.70mm	6.75mm	4.7mm
B	2.4mm	2.4mm	2.4mm	1.00mm	2.4mm	2.4mm
C	0.96mm	0.81mm	0.81mm	0.50mm	0.96mm	0.81mm
PANEL THICKNESS	1.6mm	1.6mm	2.4mm	1.0mm	1.6mm	1.6mm
MOUNTING HOLE Ø	1.79/1.87mm	1.33/1.41mm	1.33/1.41mm	0.50/0.55mm	1.79/1.87mm	1.33/1.41mm



ORDER CODE	H2157-01	H3150-01	H3151-01	H2101-01	H2105-01
A	1.4mm max	0.50mm	4.4mm	6.0mm	4.5mm
B	2.00mm	1.6mm	1.6mm	6.6mm	3.45mm
C	9.80mm	5.4mm	4.00mm	2.4mm	2.4mm
D	1.21mm	0.97mm	-	0.91mm	0.81mm
PANEL THICKNESS	1.6mm	1.6mm	1.6mm	1.6mm	1.6mm
MOUNTING HOLE Ø	1.30/1.40mm	0.99/1.04mm	0.99/1.04mm	1.79/1.87mm	1.33/1.41mm

All dimensions in mm.

[www.harwin.com](http://www.harwin.com)

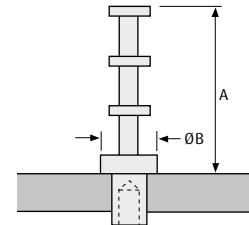
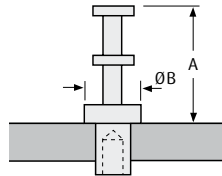
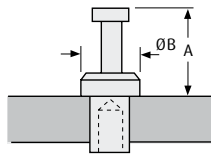




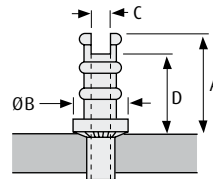
# PCB Terminals

## Turned Terminals

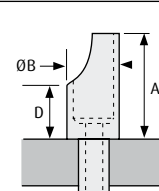
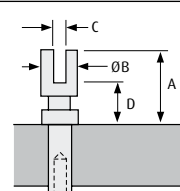
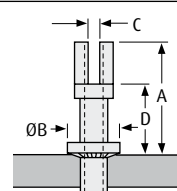
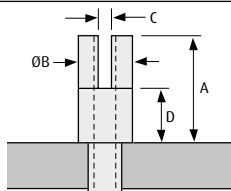
- ❖ Material: brass with tin plating.
- ❖ For swaging tool change order code to prefix Z and suffix 00 (example Z2174-00).
- ❖ Contact [technical@harwin.com](mailto:technical@harwin.com) for alternative finishes and custom designs.



ORDER CODE	H9001-01	H9004-01	H2121-01	H9020-01	H9021-01
A	2.4mm	4.75mm	5.15mm	7.65mm	7.65mm
B	1.57mm	3.18mm	3.18mm	3.18mm	3.18mm
PANEL THICKNESS	1.6mm	1.6mm	1.6mm	1.6mm	2.4mm
MOUNTING HOLE Ø	1.25/1.33mm	2.01/2.09mm	1.69/1.74mm	2.35/2.45mm	2.35/2.45mm



ORDER CODE	H2071Z01	H2072-01	H2072Z01	H2072ZL1	H2073Z01	H2074Z01
A	9.1mm	6.35mm	6.5mm	6.5mm	9.1mm	8.75mm
B	4.75mm	3.95mm	3.95mm	3.95mm	4.75mm	6.35mm
C	1.70mm	1.40mm	1.17mm	1.17mm	1.70mm	2.77mm
D	7.55mm	5.15mm	5.3mm	5.3mm	7.55mm	7.15mm
THRU HOLE Ø	1.70mm	1.40mm	1.17mm	1.17mm	1.70mm	2.77mm
PANEL THICKNESS	2.4mm	1.6mm	1.6mm	2.4mm	3.2mm	3.2mm
MOUNTING HOLE Ø	2.68/2.78mm	2.17/2.27mm	2.01/2.11mm	2.01/2.11mm	2.68/2.78mm	3.93/4.03mm



ORDER CODE	H2051-01	H2055-01	H2039-01	H9023-01	H9026-01
A	4.8mm	6.35mm	12.70mm	3.95mm	6.35mm
B	3.18mm	3.18mm	5.55mm	1.83mm	3.18mm
C	0.65mm	1.20mm	1.5mm	0.7mm	-
D	2.4mm	3.18mm	7.95mm	2.25mm	3.18mm
THRU HOLE Ø	1.02mm	1.70mm	2.18mm	-	1.1mm
PANEL THICKNESS	1.6mm	2.4mm	3.2mm	1.6mm	2.4mm
MOUNTING HOLE Ø	1.60/1.68mm	2.40/2.48mm	3.19/3.27	1.28/1.38mm	1.84/1.94mm

[www.harwin.com](http://www.harwin.com)

All dimensions in mm.



**HARWIN**

PCB TERMINALS