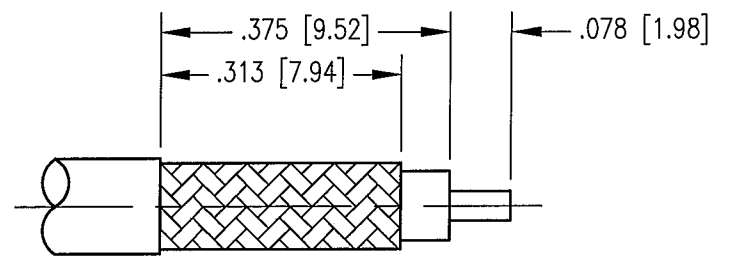
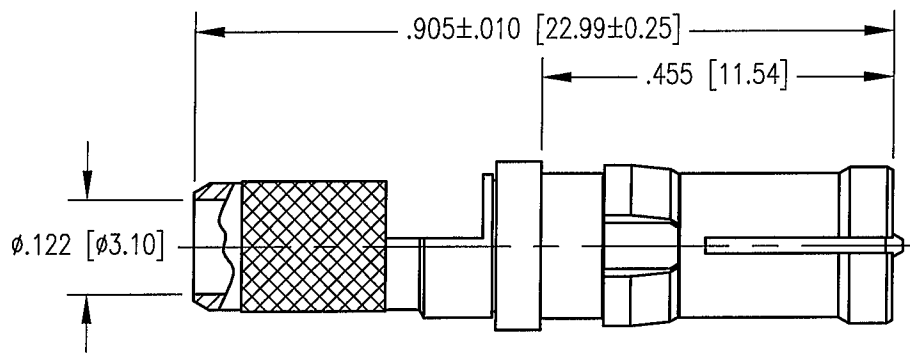
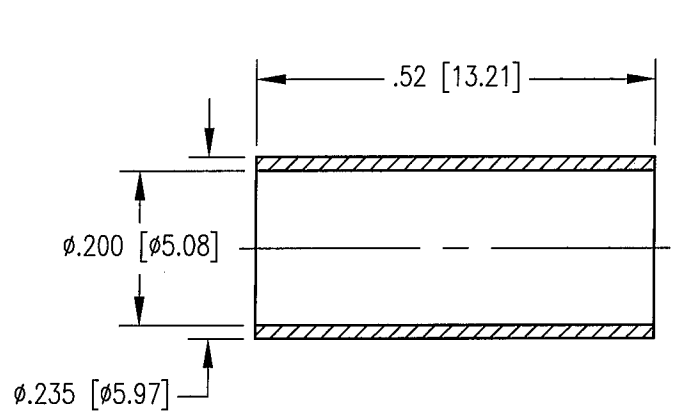


REV	DESCRIPTION	DATE	APPD
D	ECR 7281	2/25/02	[Signature]



CABLE TRIMMING DIMENSIONS

NOTES:

- MATERIALS:  
 FRONT BODY: BERYLLIUM COPPER PER ASTM B196  
 CLIP RING: BERYLLIUM COPPER PER ASTM B194  
 FERRULE: COPPER ALLOY  
 ALL OTHER METAL PARTS: BRASS PER ASTM B16  
 INSULATOR: TEFLON PER ASTM D1710
- FINISH:  
 BODY AND CENTER CONTACT: .000015 MIN. GOLD PER MIL-G-45204 OVER  
 .000100 MIN. COPPER PER MIL-C-14550  
 FERRULE: .000100 MIN. BRIGHT TIN PER MIL-T-10727 OVER  
 COPPER FLASH  
 CLIP RING: UNPLATED
- ELECTRICAL:  
 IMPEDANCE: 50 OHMS NOMINAL  
 FREQUENCY RANGE: 0 - 900 MHz
- DESIGNED FOR USE WITH RG-58 CABLE OR EQUIVALENT.
- FOR CABLING PROCEDURES USE CAP 9-01 WITH TRIMMING DIMENSIONS SHOWN.
- CRIMP FERRULE USING .213 HEX DIE.

PER ASME Y14.5M-1994 UNLESS OTHERWISE SPECIFIED: DIMENSIONS ARE IN INCHES [MM]		<b>NORTHROP GRUMMAN</b>	
TOLERANCES: DECIMALS .XX ± .01 [0.254] .XXX ± .005 [0.127] ANGLES ± 2°		Winchester Electronics 400 Park Road Watertown, CT 06795	
<b>CUSTOMER DRAWING</b>		TITLE RDM STRAIGHT RECEPTACLE	
DRAWN MJF	DATE 2/18/02	CHECKED KJT	DATE 2/19/02
APPROVED JEM	DATE 2/19/02	APPROVED JED	DATE 2/19/02
A		201-910-1160J	SHT. OF REV. 1 1 D