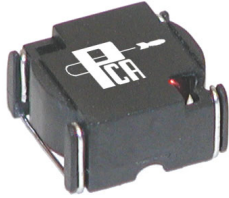


Surface Mount Power Inductor

EPI B30 Series

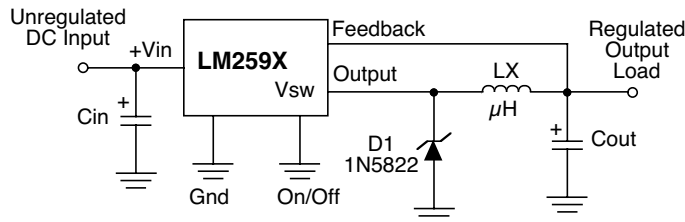


- Optimized for National's LM259X Series
- Low loss material ensures operation in high frequency switching converters, such as Buck, Boost or as output averaging filter inductor
- Also suitable for use in high quality filter applications
- 150 KHz & 500 KHz Switching Frequency
- Low Cost Inductor

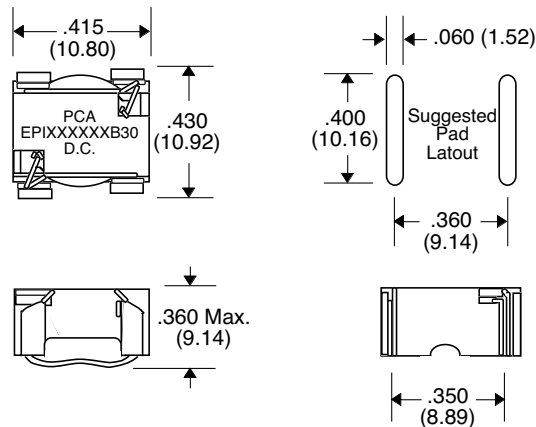
Primary Specification

Part Number	National Semiconductor Chip	Induct. ($\mu\text{H} \pm 20\%$) @ 0 Adc	DCR (Ω Typ.)	Induct. ($\mu\text{H} 15\%$) @ Idc	Idc (mA)	Core Loss		Vt1 (V- μSec) 150 KHz	Vt2 (V- μSec) 260 KHz	Temp.Rise	
						@ Vt1 (mW)	@ Vt2 (mW)			@ Vt1 $^{\circ}\text{C}$ (Typ.)	@ Vt2 $^{\circ}\text{C}$ (Typ.)
EPI1L7312B30	---	1.8	.007	1.7	3100	44	44	2.7	1.6	22	22
EPI2L5272B30	---	2.66	.008	2.5	2700	44	44	3.3	2.0	21	21
EPI4L7192B30	---	4.95	.018	4.7	1900	44	44	4.7	2.8	21	21
EPI100152B30	---	10.6	.042	10	1500	44	44	6.7	4.0	26	26
EPI150132B30	LM259X-L16	16	.067	15	1300	44	---	8.0	---	29	---
EPI220102B30	LM259X-L15	24	.101	22	1000	44	---	10.0	---	27	---
EPI330831B30	LM259X-L14	35	.153	33	830	44	---	12.0	---	28	---
EPI470701B30	LM259X-L13	51	.235	47	700	44	---	14.7	---	29	---
EPI680581B30	LM259X-L12	74	.358	68	580	44	---	17.3	---	30	---
EPI101481B30	LM259X-L11	108	.535	100	480	44	---	21.3	---	30	---
EPI151391B30	LM259X-L10	163	.836	150	390	44	---	26.0	---	31	---
EPI221321B30	LM259X-L9	242	1.3	220	320	44	---	31.3	---	32	---
EPI331261B30	LM259X-L8	360	2.0	330	260	44	---	38.0	---	32	---

Application



Package B30



Note: Coplanarity within .005" Max.

Unless Otherwise Specified Dimensions are in Inches /mm $\pm .010 / .25$