



FEATURES AND SPECIFICATIONS

Features and Benefits

- 4 to 48 circuits
- Holds wires for secure, reliable contact
- Modular construction reduces inventory
- High flammability rating

Reference Information

UL: File No. E48521
 Guide No. XCFR2
 CSA: File No. 025562

Electrical

Voltage: 300 V
 Maximum Current: 17.5 Amp
 Insulation Resistance: >5,000 Megaohms

Mechanical

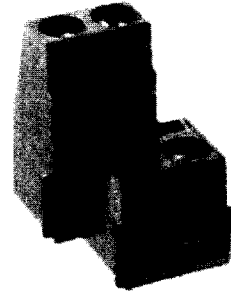
Rec. Tightening Torque: 5 in. lbs., .56 Nm
 Operating Temperature: 110°C
 Wire Strip Length: 1/4" or 6mm

Physical

Housing: Polyamide, UL94 V-0, Black
 Screws: Bronze
 Screw Plating: Nickel
 Contacts: Copper Alloy
 Contact Plating: Tin
 Pressure Clamp: Brass
 Pressure Clamp Plating: Nickel
 Wire Range: 14 to 26 AWG, 1.5 to 0.2mm²

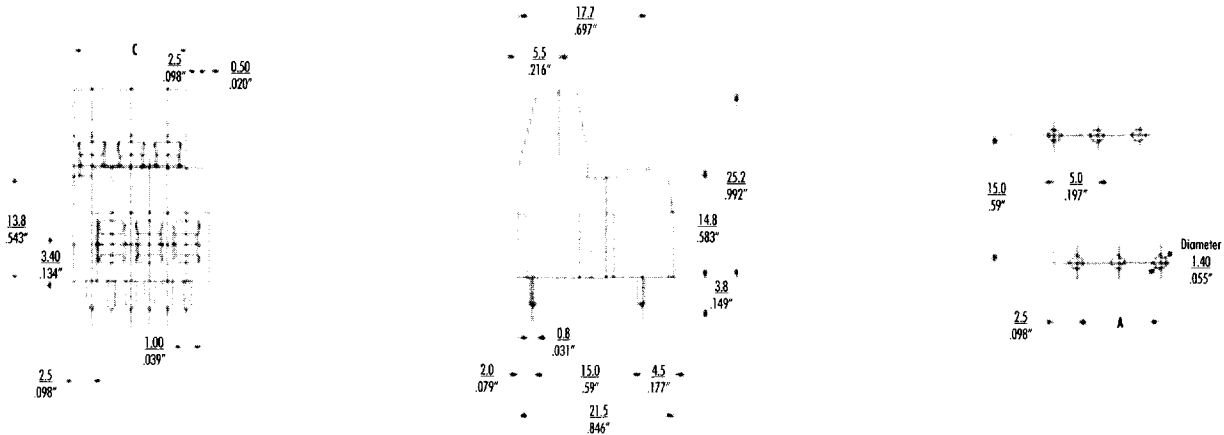
5.0mm (.197") Pitch
Beau Eurostyle®
Medium Profile, Two Level
Terminal Block

39890
Modular



89 Series

CATALOG DRAWING (FOR REFERENCE ONLY)



ORDERING INFORMATION AND DIMENSIONS

Order # (Engineering #) Replace XX with # of circuits, 04-48

Tin Plated
 39890-06XX (8922XX)

# of Circuits	A		C		# of Circuits	A		C	
	in	mm	in	mm		in	mm	in	mm
4	.20	5.0	.39	10.0	28	2.56	65.0	2.76	70.0
6	.39	10.0	.59	15.0	30	2.76	70.0	2.95	75.0
8	.59	15.0	.79	20.0	32	2.95	75.0	3.15	80.0
10	.79	20.0	.98	25.0	34	3.15	80.0	3.35	85.0
12	.98	25.0	1.18	30.0	36	3.35	85.0	3.54	90.0
14	1.18	30.0	1.38	35.0	38	3.54	90.0	3.74	95.0
16	1.38	35.0	1.57	40.0	40	3.74	95.0	3.94	100.0
18	1.57	40.0	1.77	45.0	42	3.94	100.0	4.13	105.0
20	1.77	45.0	1.97	50.0	44	4.13	105.0	4.33	110.0
22	1.97	50.0	2.16	55.0	46	4.33	110.0	4.53	115.0
24	2.16	55.0	2.36	60.0	48	4.53	115.0	4.72	120.0
26	2.36	60.0	2.56	65.0					

*Consult factory for imprinting and other options