

### Specifications

System	
Form Factor	ISA, Half-Size SBC
Processor	AMD Geode™ LX800
System Memory	Onboard 128 MB DDR400 Memory
Chipset	AMD Geode™ LX800 + CS 5536
Ethernet	10/100Base-TX or Gigabit Ethernet x 1 (optional), RJ-45 x 1, Realtek 8100C (10/100Base-TX) Realtek 8110S (10/100/1000Base-TX) optional
BIOS	Award Plug & Play Firmware Hub BIOS – 4 Mb ROM
Expansion Interface	ISA, PC/104
Watchdog Timer	1 ~ 255 steps, can be set with software on Super I/O
RTC	Internal RTC
Battery	Lithium Battery
Power Requirement	AT 5V, 12V
Operating Temperature	32°F ~ 140°F (0°C ~ 60°C)
Board Size	7.3" (L) x 4.8" (W) (185mm x 122mm)
Gross Weight	0.61 lb (0.3 kg)
MTBF (Hours)	85,000
Power Consumption (Typical)	6.9W, onboard AMD Geode™ LX800
Display	Supports CRT/LCD simultaneous display
VGA Controller	AMD Geode™ LX800
Memory	Shared memory up to 16 MB
Resolutions	1600 x 1200@32bpp at 100 MHz for CRT 1600 x 1200@24bpp for LCD
LCD Interface	24 bit only, Single Channel LVDS/TTL LCD Support
I/O	AMD CS 5536
Storage	ATA-33 x 1 channel CompactFlash™ Type 2 x 1 Standard FDD port x 1, support up to one floppy device
Serial Port	COM port x 4: (Internal Pin Header x 4) COM 1, COM 3, COM 4: RS-232 COM 2: RS-232/422/485
Parallel Port	Supports SPP/ EPP/ ECP modes
Universal Serial Bus	USB2.0 x 4 (5 x 1 pin header x 3, Type A x 1)
PS/2 Port	Keyboard x 1; Mouse x 1
IrDA	IrDA header x 1
Audio	Realtek ALC203 AC97 Codec/ MIC-in/ Line-in/ Line-out/ CD-in

### Features

- AMD Geode™ LX800 Processor
- AMD Geode™ LX800 + CS5536
- Onboard 128 MB DDR400 Memory
- 10/100Base-TX Ethernet x 1 or Gigabit Ethernet x 1 (Optional)
- Integrated 2D Graphics Accelerator, VGA Support, CRT, TFT/ LVDS Support
- AC97 Codec Audio
- Ultra ATA33 x 1, CompactFlash™ Type 2 x 1
- USB2.0 x 4, COM x 4, Parallel x 1, IrDA x 1, Digital I/O
- PC/104 Expansion
- +5V, +12V Operation, AT Power



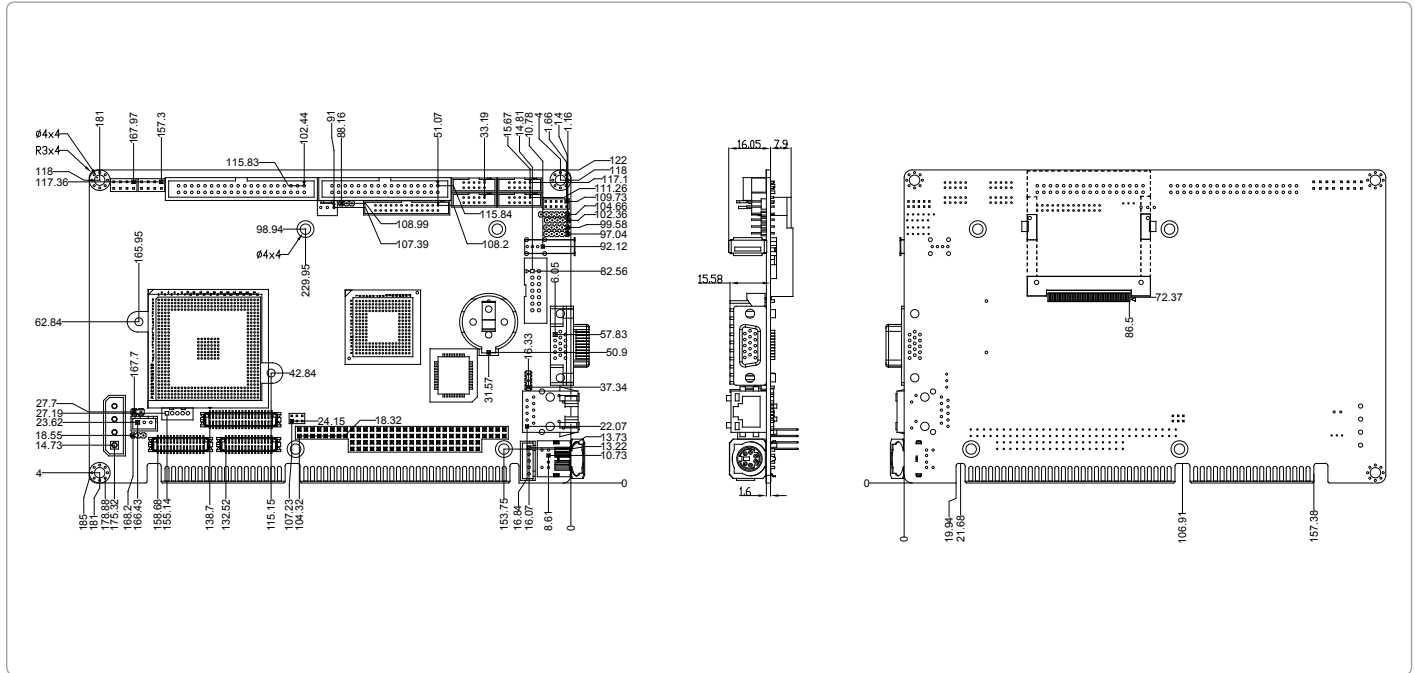
### Packing List

- **1701340704**  
Flat Cable, 34P, 70cm, GRAY for FDD
- **1701400453**  
Cable, 40P 2.54mm IDC with Nose with Fold, 40P 2.54mm IDC with Nose with Fold, 45cm, Blue ATA100
- **1700060192**  
Cable, 6P-6P-6P, 19cm, IVORY PS2/KB & Mouse
- **1709140302**  
Cable, Phone Jack x 3, to 14P, 2.54mm Housing, DB9P(M) 10P 2.0mm IDC, 4P 2.54mm Housing, 30 cm with Bracket
- **1701200301**  
Flat Cable, 9P DB9P Male, 10P 2.0mm Pitch x 2, 30cm, IDC No Fold, with Bracket
- **170910020A**  
USB Cable, 22cm 2.0mm,W/Bracket
- **1703030501**  
Wire,3P 2.5mm Housing, 3P 2,5mm Housing, 50cm
- **1701260307**  
Flat Cable, 9P/DB9P Male & 25P DB25P Female, 10P 2mm & 26P 2mm/IDC No Fold, 30cm with Bracket
- **Product CD**
- **HSB-800I**

# HSB-800I

## Dimension

Unit: mm



## Passive Backplane Options

P/N	Description	Master Interface	Slots (PCI/ ISA/ PICMG)	Power ATX Extend Function
TF-BP-204SI	Wallmount, ISA 4-slot Backplane, 4 ISA, Single Segment, AT	ISA	(0/4/0)	AT
TF-BP-206SI	Wallmount, ISA 6-slot Backplane, 6 ISA, Single Segment, AT/ATX	ISA	(0/6/0)	AT/ATX
TF-BP-214SI-V61	Wallmount, ISA 14-slot Backplane, 14 ISA, Single Segment, AT	ISA	(0/14/0)	AT

## Ordering Information

Part Number	CPU	RAM	Fan/Fanless	Display	Storage	LVDS	LAN	USB	RS-232	RS-232/422/485	Expansion Slot	Power	Temp.
TF-HSB-800I-A10-VE	AMD Geode™ LX800	Onboard 128MB DDR 400	Fanless	VGA + LVDS/TTL	IDE x 1, Floppy x 1, CF x 1	24-bit Single Channel	FE x 1	USB2.0 x 4	3	1	ISA, PC/104	+5V, +12V, AT	0°C – 60°C
TF-HSB-800I-A10-VG	AMD Geode™ LX800	Onboard 128MB DDR 400	Fanless	VGA + LVDS/TTL	IDE x 1, Floppy x 1, CF x 1	24-bit Single Channel	GbE x 1	USB2.0 x 4	3	1	ISA, PC/104	+5V, +12V, AT	0°C – 60°C

## Optional Accessories

- **TF-PER-U00A**  
AC97 Audio Daughter Board