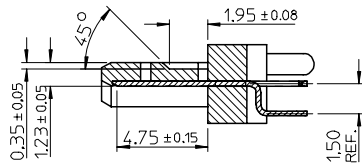
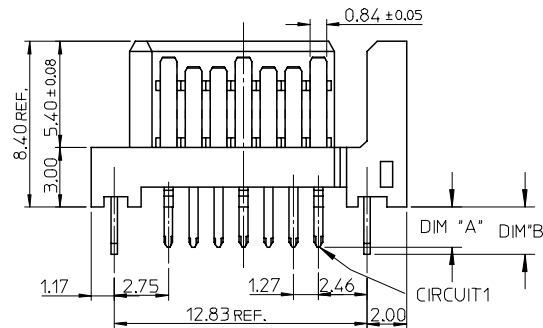
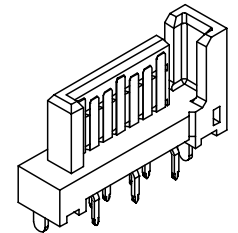
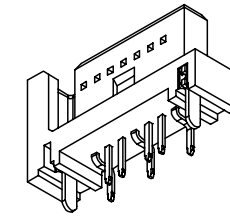
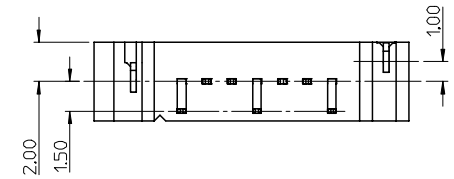
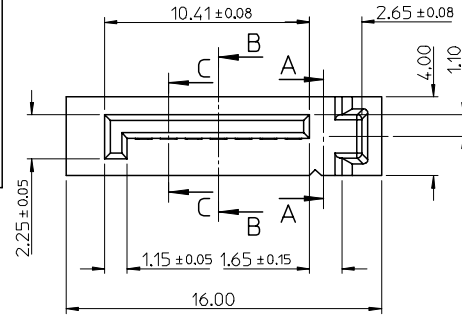
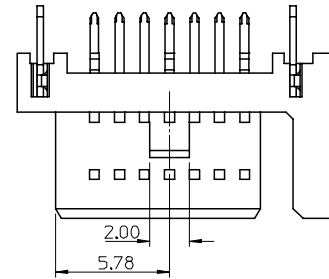
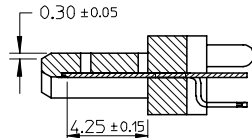


	10	9	8	7	6	
	P/N	CONTACT PLATING TYPE	'A'	'B'	PCB THICKNESS	SOLDERING PLATE
F	67491-0030	GOLD FLASH	2.05	2.40	1.60	TIN-LEAD
	67491-0031	0.76 MICRON GOLD PLATED				
	67491-0032	0.38 MICRON GOLD PLATED				
E	67491-0035	GOLD FLASH	2.35	2.40	2.00	
	67491-0036	0.76 MICRON GOLD PLATED				
	67491-0037	0.38 MICRON GOLD PLATED				
D	67491-0038	GOLD FLASH	3.00	3.20	2.40	
	67491-0039	0.76 MICRON GOLD PLATED				
	67491-0040	0.38 MICRON GOLD PLATED				
C	67491-1030	GOLD FLASH	2.05	2.40	1.60	PURE TIN
	67491-1031	0.76 MICRON GOLD PLATED				
	67491-1032	0.38 MICRON GOLD PLATED				
B	67491-1035	GOLD FLASH	2.35	2.40	2.00	
	67491-1036	0.76 MICRON GOLD PLATED				
	67491-1037	0.38 MICRON GOLD PLATED				
A	67491-1038	GOLD FLASH	3.00	3.20	2.40	
	67491-1039	0.76 MICRON GOLD PLATED				
	67491-1040	0.38 MICRON GOLD PLATED				

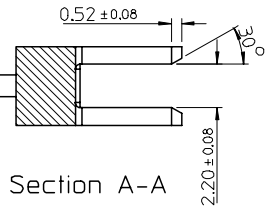
- NOTES:
- MATERIAL :
HOUSING: THERMAL PLASTIC, UL94V-0, COLOR: BLACK
TERMINAL/PEG: COPPER ALLOY
 - TERMINAL PLATING :
CONTACT AREA:
GOLD PLATED
SOLDER TAIL:
1.27 MOICRON MIN. TIN-LEAD OR TIN PLATED
UNDER PLATE:
1.27 MOICRON MIN. NICKEL PLATED
 - PEG PLATING:
1.27 MOICRON MIN. TIN-LEAD OR TIN PLATED
OVERALL 1.27 MOICRON MIN. TNICKEL UNDER PLATED
 - PACKAGING SPECIFICATION REFER TO PK-67491-001
 - PRODUCT SPECIFICATION REFER TO PS-67491-001
 - MATING PART: 67489
 - RECOMMENDED PROCESS: WAVE SOLDERING



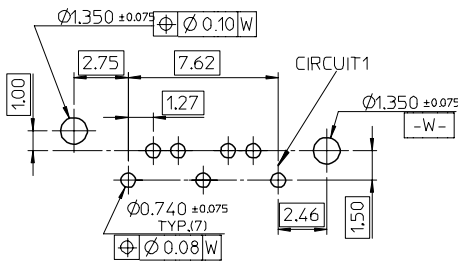
Section B-B



Section C-C



Section A-A



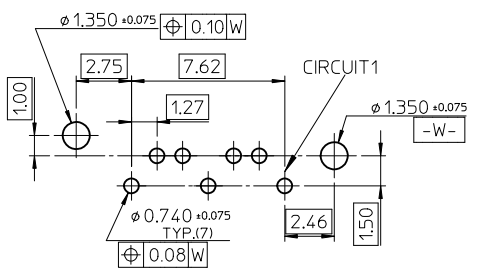
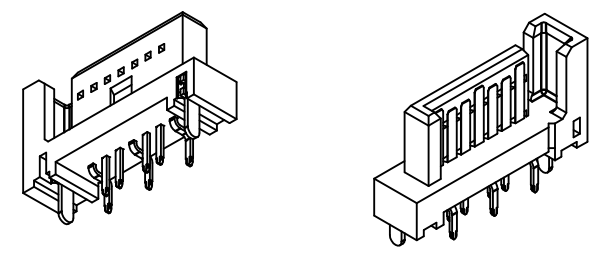
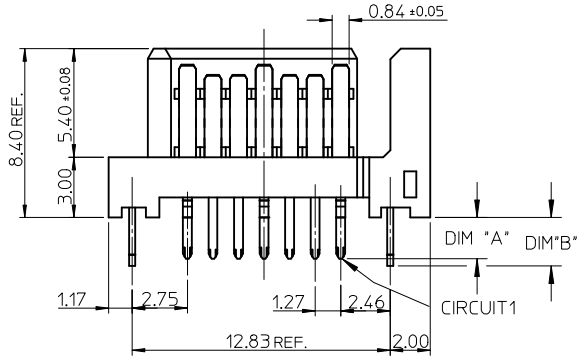
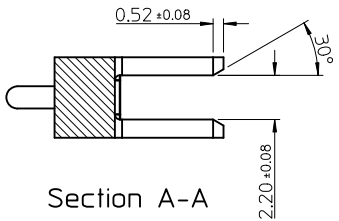
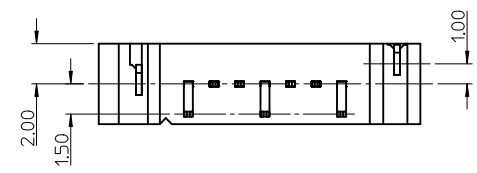
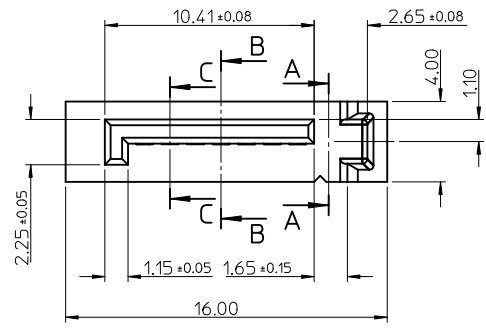
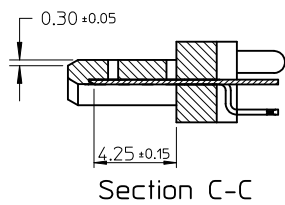
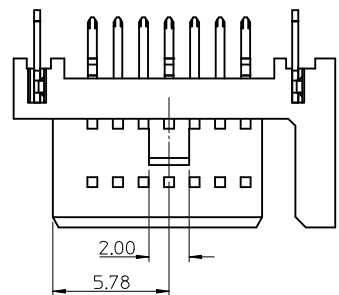
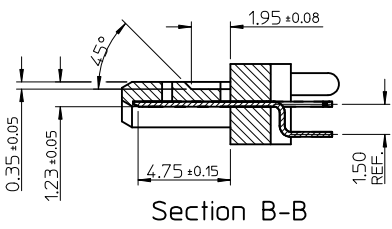
RECOMMENDED P.C.B. LAYOUT t=1.6mm OR 2.0mm

REV	DESCRIPTION	QUALITY SYMBOLS
C	EC NO: SH2005-0049 DRWN:GRMA 2004/09/03 CHKD:GRATE M&A004/09/07 APPR: YTYAP 2004/09/10	<p>▽ - 0</p> <p>▽ - 0</p>

GENERAL TOLERANCES (UNLESS SPECIFIED)		SCALE	DESIGN UNITS
PLACES	mm	4:1	METRIC
4 PLACES	± ---		
3 PLACES	± ---		
2 PLACES	± 0.15		
1 PLACE	± 0.25		
ANGULAR ± 3°			
DRAFT WHERE APPLICABLE			
MUST REMAIN WITHIN DIMENSIONS			

DIMENSION STYLE	TITLE
MM ONLY	1.27MM HIGH SPEED SERIAL PLUG VERTICLE TYPE
DRAWN BY RICHARD	DATE '01/06/21
CHECKED BY VINCENT	DATE '01/06/21
APPROVED BY ERIC	DATE '01/06/21

THIRD ANGLE PROJECTION		REVISE ON CAD ONLY	
MATERIAL NO. SEE TABLE		DOCUMENT NO. SD-67491-002	SHEET NO. 1 OF 1
THIS DRAWING CONTAINS INFORMATION THAT IS PROPRIETARY TO MOLEX INCORPORATED AND SHOULD NOT BE USED WITHOUT WRITTEN PERMISSION			



RECOMMENDED P.C.B. LAYOUT t=1.6mm OR 2.0mm

- NOTES:
- MATERIAL:
 - HOUSING: SEE TABLE, UL94V-0, COLOR: BLACK OR BLUE (SEE P/N TABLE)
 - TERMINAL/PEG: COPPER ALLOY
 - TERMINAL PLATING:
 - CONTACT AREA: GOLD PLATED
 - SOLDER TAIL: 1.27 MICRON MIN. TIN PLATED
 - UNDER PLATE: 1.27 MICRON MIN. NICKEL PLATED
 - PEG PLATING:
 - 1.27 MICRON MIN. TIN PLATED
 - OVERALL 1.27 MICRON MIN. NICKEL UNDER PLATED
 - PACKAGING SPECIFICATION REFER TO PK-67491-001
 - PRODUCT SPECIFICATION REFER TO PS-67491-001
 - MATING PART: 67489
 - RECOMMENDED PROCESS: WAVE SOLDERING
 - PRODUCT COMPLIANT TO RoHS DIRECTIVE 2002/95/EC AND ELV DIRECTIVE 2000/53/EC

OBSELETE PARTS EC NO: SH2011-0104 DRWING: GLL CHKD: RZHANG APPR: RZHANG 2010/10/22 2010/11/03	QUALITY SYMBOLS $F_A = 0$ $F_G = 0$ $F_P = 0$	GENERAL TOLERANCES (UNLESS SPECIFIED) mm INCH 4 PLACES ± --- ± --- 3 PLACES ± --- ± --- 2 PLACES ± 0.15 ± --- 1 PLACE ± 0.25 ± --- ANGULAR ± 3°	DIMENSION STYLE MM ONLY	SCALE 4:1	DESIGN UNITS METRIC	THIRD ANGLE PROJECTION	
	DRAWN BY: RICHARD CHECKED BY: VINCENT APPROVED BY: RZHANG MATERIAL NO.	DATE: '01/06/21 DATE: '01/06/21 DATE: 2010/11/03	TITLE 1.27MM HIGH SPEED SERIAL PLUG SERIAL TYPE	MOLEX INCORPORATED	DOCUMENT NO. SD-67491-002	SHEET NO. 1 OF 2	
	DRAFT WHERE APPLICABLE MUST REMAIN WITHIN DIMENSIONS	SEE CHART IN SHEET 2	THIS DRAWING CONTAINS INFORMATION THAT IS PROPRIETARY TO MOLEX INCORPORATED AND SHOULD NOT BE USED WITHOUT WRITTEN PERMISSION				
	SIZE A3						

	10	9	8	7	6	5	4	3	2	1						
	P/N	CONTACT PLATING TYPE	"A"	"B"	PCB THICKNESS	SOLDERING PLATE	COLOR	PLASTIC TYPE								
F	67491-1030	GOLD FLASH	2.05	2.40	1.60	PURE TIN	BLACK	THERMAL PLASTIC								
	67491-1031	0.76 MICRON GOLD PLATED														
	67491-1032	0.38 MICRON GOLD PLATED														
	67491-1035	GOLD FLASH	2.35	2.40	2.00											
	67491-1036	0.76 MICRON GOLD PLATED														
	67491-1037	0.38 MICRON GOLD PLATED														
E	67491-1038	GOLD FLASH	3.00	3.20	2.40		PURE TIN		BLACK	THERMAL PLASTIC						
	67491-1039	0.76 MICRON GOLD PLATED														
	67491-1040	0.38 MICRON GOLD PLATED														
	D	67491-2031	0.76 MICRON GOLD PLATED	2.05	2.40						1.60	PURE TIN	BLUE PENTONE NO.293C $\Delta E < 3$	THERMAL PLASTIC		
		67491-2032	0.38 MICRON GOLD PLATED													
		67491-2035	GOLD FLASH													
D	67491-2036	0.76 MICRON GOLD PLATED	2.35	2.40	2.00	PURE TIN	BLUE PENTONE NO.293C $\Delta E < 3$	THERMAL PLASTIC								
	67491-2037	0.38 MICRON GOLD PLATED														
	67491-2038	GOLD FLASH														
C	67491-2039	0.76 MICRON GOLD PLATED	3.00	3.20	2.40				PURE TIN	BLACK	HIGH TEMPERATURE THERMAL PLASTIC					
	67491-2040	0.38 MICRON GOLD PLATED														
	67491-1130	GOLD FLASH										2.05	2.40	1.60		
	67491-1131	0.76 MICRON GOLD PLATED														
	67491-1132	0.38 MICRON GOLD PLATED														
	C	67491-1135	GOLD FLASH	2.35	2.40	2.00	PURE TIN	BLACK				HIGH TEMPERATURE THERMAL PLASTIC				
67491-1136		0.76 MICRON GOLD PLATED														
67491-1137		0.38 MICRON GOLD PLATED														
67491-1138		GOLD FLASH	3.00							3.20			2.40			
67491-1139	0.76 MICRON GOLD PLATED															
67491-1140	0.38 MICRON GOLD PLATED															

B									
---	--	--	--	--	--	--	--	--	--

A	OBsolete PARTS EC NO: SH2011-0104 G DRWG:LLI 2010/10/22 CHKD: APPR:RZHANG 2010/11/03 REV	QUALITY SYMBOLS	GENERAL TOLERANCES (UNLESS SPECIFIED)	DIMENSION STYLE	SCALE	DESIGN UNITS	THIRD ANGLE PROJECTION	TITLE 1.27MM HIGH SPEED SERIAL PLUG VERTICAL TYPE		
		$F_A = 0$ $F_G = 0$ $F_P = 0$	mm INCH 4 PLACES \pm --- \pm --- 3 PLACES \pm --- \pm --- 2 PLACES \pm 0.15 \pm --- 1 PLACE \pm 0.25 \pm --- ANGULAR \pm 3°	MM ONLY DRAWN BY DATE RICHARD '01/06/21 CHECKED BY DATE VINCENT '01/06/21 APPROVED BY DATE RZHANG 2010/11/03 MATERIAL NO.	4:1 METRIC					
		DRAFT WHERE APPLICABLE MUST REMAIN WITHIN DIMENSIONS		SEE CHART SIZE A3 THIS DRAWING CONTAINS INFORMATION THAT IS PROPRIETARY TO MOLEX INCORPORATED AND SHOULD NOT BE USED WITHOUT WRITTEN PERMISSION	MOLEX INCORPORATED DOCUMENT NO. SD-67491-002	SHEET NO. 2 OF 2				